

IDS X-SMS Module Training Guide



SOUTH AFRICA'S LEADING MANUFACTURER AND DISTRIBUTOR OF
ELECTRONIC SECURITY PRODUCTS

Introduction

IDS X-SMS offers powerful, versatile and highly configurable sms reporting and control capabilities, which will keep you informed and in control of your X-Series alarm system when away from your premises. The X-SMS module works with IDS X-Series panels from version 2.3x and above.

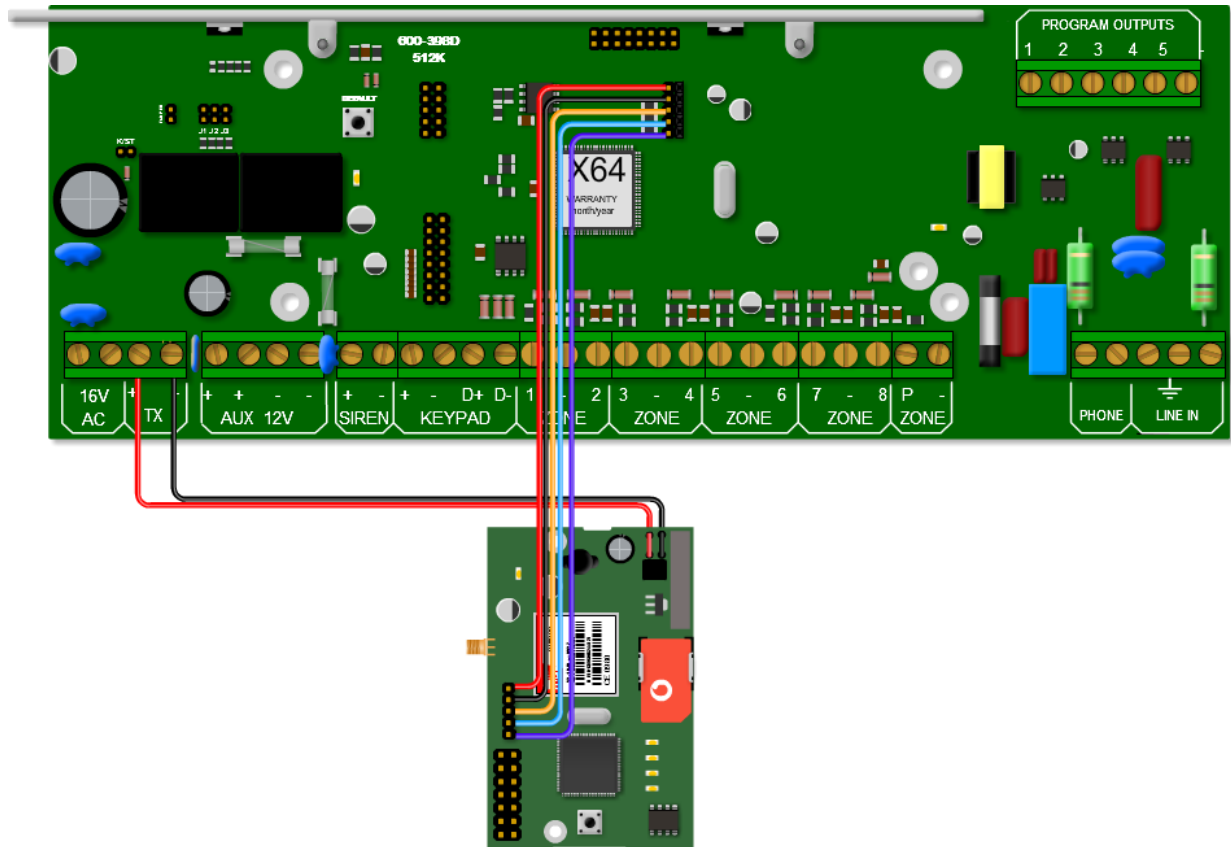
In this training guide we will cover step by step how to install the IDS X-SMS Module, we will explain the concept of programming the unit and go through some of the main commands.



1. Installation

1.1. X-SMS Connection to an X-Series Panel

The IDS X-SMS Module connects to the X-Series panel using a serial connection.



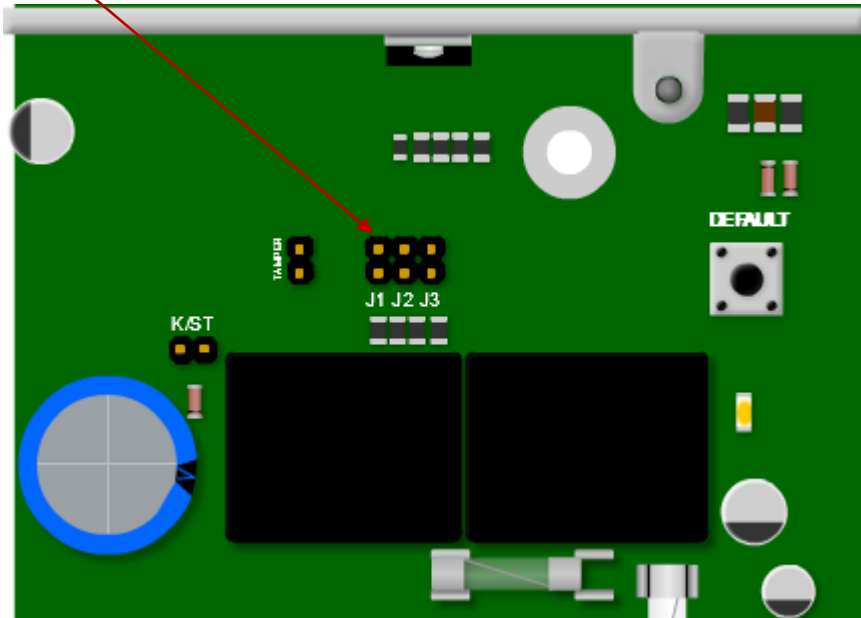
The serial connection between the X-SMS module and the X-Series Alarm Panel is shown in the image above. **Remember that the serial pin that is closest to the X-SMS Antenna connector is connected to the pin closest to the X-Series heat sink.**

The colours of the serial cable are correct at time of writing.

The X-SMS Module can be powered by an X-Series panel's TX or Aux output. The power connection between the X-SMS module and the X-Series Alarm Panel using the TX output is shown in the image above.

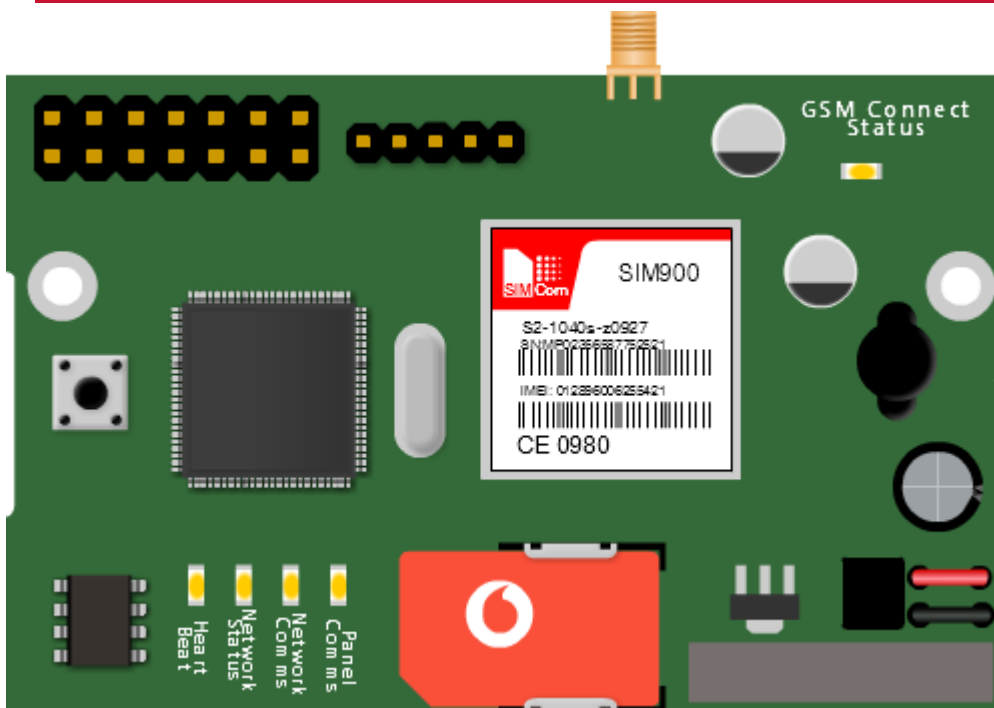
1.2. Jumper 1

As the X-SMS uses serial communication with the X-Series Panel, don't forget to short Jumper J1.



It is recommended to default the X-SMS Module on a new installation. To default the X-SMS Module, hold the 'Restore Defaults' button on power up until the 'Heart Beat LED' comes on, \pm 15 seconds.

1.3. Status LEDs



GSM Connect Status

LED flashes once per second if not connected and once every three seconds when connected to the Cell network and the signal strength is good enough to communicate.

Heart Beat

LED Flashes when the unit is running and the power up sequence has completed.

Network Status

LED Flashes when connected to the Cell provider's network and accepted by the service provider.

Network Comms

LED on when communicating with the Cell network and off when no communication.

Panel Comms

LED on when communicating with the X-Series alarm panel.



LEDs are a good way to troubleshoot if any problems arise.

1.4. Location 196

To create a link between your X-SMS Module and your X-Series Alarm Panel, a six digit number, of your choosing, must be put into location 196 of installer programming.

Serial Code
User Code: 123456

NB: the X-SMS Module MUST be connected to the panel and powered on when inputting the number in location 196.

The reason for location 196 is to create a unique link with your X-SMS Module, giving you extra security. This means you cannot connect any X-SMS Module to your panel without entering installer mode. Before you can start sending SMSes you must exit installer mode to set the security code.



Don't forget to enter an Account code into locations 61,62,63 etc.

2. Basic Programming

In this next section we will discuss the basic programming needed to get started with the X-SMS Module.

2.1. Command structure

All commands follow the same command structure to make programming easy to remember. The command structure goes as follows:

[CODE] *space* [COMMAND] *space* [EXTENDED COMMAND] *space* [DATA]

Where:

Code – A valid alarm user code stored in the X-Series Alarm Panel.

Command – The function that you are wanting to access in the X-series Alarm Panel.

Extended Command – Supplementary information the command requires. (Not always used)

Data – The value/setting required of the command/extended command.



The cell networks limit the number of characters to 160 per sms. The X-SMS Module doesn't store any user codes, it just sends them to the X-Series Panel. Make sure the code you use has the appropriate permissions in the X-Series Alarm Panel.

2.2. Adding Phone Numbers

In the default state any cell phone can be used to enter the first "Master Phone Number", you can only add another phone number to the X-SMS Module using a "Master Phone Number".

There are types of categories a phone number can fall under:

Master Phone Number

Master phone numbers have the highest level of access to the SMS Module, they are allowed access to all configuration data.

Arming phone Numbers

Arming phone numbers have permissions for all panel functions, arm/disarm, panel status, bypass zone, PGM control and receive reports.

Reporting Phone Numbers

Reporting phone numbers are only permitted to receive reports from the SMS module, and to temporarily turn off reporting to that number.

To add a Master Phone Number you will use the following information:

Code – 1234 (a user code)

Command – Add

Extended Command – Master (category the number must be under)

Data – 074 049 2481 (the number to be made master)

The SMS should look like this:

1234 add master 0740492481

All phone number commands:

Action	Code	Command	Ext. Command	Data
Add phone number as an Master number	1234	Add	Master	074 049 2481
Add phone number as an Arm number	1234	Add	Arming	073 917 0759
Add phone number as a Reporting number	1234	Add	Reporting	071 348 9467
Deleting a phone number	1234	Delete		074 049 2481

2.3. Reporting

Each phone number can turn reporting off, as well as choose how they want to receive reporting messages.

On/Off – Enables/Disables reporting to the phone that sent the SMS.

Global – Events that are not partition related. Eg. Ac Fail.

P1;P2;P3... – Events that are partition based. (P1 for partition 1, P2 for partition 2 and so on) Eg. Arm/Disarm.

Type – Enables the type of reporting that the phone number will receive.

There are three types to choose from:

Raw – A contact ID string is sent to the phone.

Full – All enabled events will be sent to the phone in English.

Partial - Only the following will be reported: Arm/Disarm, Zone violations, Panics, AC Fail/Restore and Battery Low/Restore. (this is the default)

To turn on reporting for partition 1 and global you will use the following information:

Code – 1234 (a user code)

Command – Report

Extended Command – On P1, global

Data – 074 049 2481 (the number to receive the reporting smses)

The SMS should look like this:

1234 report on p1,global 0740492481

To change reporting to full you will use the following information:

This must be done from the number you want to change the reporting type for.

Code – 1234 (a user code)

Command – Report

Extended Command – Type

Data – Full

The SMS should look like this:

1234 report type full

All reporting commands:

Action	Code	Command	Ext. Command	Data
Turn on reporting for partition events	1234	Report	On, P1,P2,P3.....	074 049 2481
Turn off reporting for global events	1234	Report	Off Global	073 917 0759
Turn on reporting for partition and global events	1234	Report	On P1, P2, Global	071 348 9467
Turn on full reporting	1234	Report	Type	Full
Turn on partial reporting	1234	Report	Type	Reduced
Turn on raw data reporting	1234	Report	Type	Raw



Only events that are enabled on the alarm panel will be reported.
Only a "Master Phone Number" can allocate partitions to a phone number.

2.4. SMS Threshold

By default there is a threshold of 20 smses per day to a single phone number. You can increase or decrease this threshold by sending a threshold command.

To increase the threshold to 50 smses you will use the following information:

Code – 1234 (a valid user code in partition 1)

Command – Report

Extended Command – Threshold

Data – 50 (Number of SMSes)

The SMS should look like this:

1234 report threshold 50

To decrease the threshold to 14 smses you will use the following information:

Code – 1234 (a valid user code in partition 1)

Command – Report

Extended Command – Threshold

Data – 14 (Number of SMSes)

The SMS should look like this:

1234 report threshold 14

Action	Code	Command	Ext. Command	Data
Increase the reporting threshold to 50 SMSes	1234	Report	Threshold	50
Decrease the reporting threshold to 14 SMSes	1234	Report	Threshold	14

2.5. Arm/Disarm

Master and Arming phone numbers are able to arm or disarm the X-Series Alarm Panel in multiple profiles. Arming the panel requires a valid user code for the partition you want to arm/disarm.

To away arm partition 1 you will use the following information:

Code – 1234 (a valid user code in partition 1)

Command – Arm

Extended Command – **Not needed*

Data – P1 (Partition number)

The SMS should look like this:

1234 arm p1

To arm partition 3 in stay profile 2 you will use the following information:

Code – 1234 (a valid user code in partition 1)

Command – Arm

Extended Command – S2 (Stay Profile number)

Data – P3 (Partition number)

The SMS should look like this:

1234 arm s2 p3

All arm/disarm commands:

Action	Code	Command	Ext. Comm	Data
Away arm all partitions	1234	Arm		All
Away arm P1 & P3	1234	Arm		P1, P3
Stay arm P2 in stay profile 3	1234	Arm	S3	P2
Stay arm P1 & P4 in stay profile 1	1234	Arm	S1	P1, P4
Disarm all partitions	1234	Disarm		All
Disarm P2	1234	Disarm		P2
Disarm P5 & P6	1234	Disarm		P5, P6

2.6. Bypass/Unbypass

When needed you are able to send a command to bypass or unbypass a specific zone/s. You must specify which zones to bypass in the data field.

To bypass zone 3 you will use the following information:

Code – 1234 (a valid user code)

Command – Bypass

Extended Command – **Not needed*

Data – 3 (Zone number)

The SMS should look like this:

1234 bypass 3

To unbyypass zones 4 and 9 you will use the following information:

Code – 1234 (a valid user code)

Command – Unbypass

Extended Command – ** Not needed*

Data – 4,9 (Zone numbers)

The SMS should look like this:

1234 unbypass 4,9

All bypass/unbypass commands:

Action	Code	Command	Ext. Comm	Data
Bypass zone 1	1234	Bypass		1
Bypass zone 3,4,8,10	1234	Bypass		3,4,8,10
Bypass named zone "Passage"	1234	Bypass		Passage
Bypass named zone "Lounge" & "Kitchen"	1234	Bypass		Lounge, Kitchen
Unbypass Zone 5	1234	Unbypass		5
Unbypass "Kitchen"	1234	Unbypass		Kitchen

2.7. Panel Status

Using the X-SMS Module you are able to check the status of various parts of the panel, such as Arm Status, Zone Status, Bypass Status, and PGM Status.

To check the arm status of partition 1 you will use the following information:

Code – 1234 (a valid user code in partition 1)

Command – Arm

Extended Command – Status

Data – P1 (Partition number)

The SMS should look like this:

1234 arm status p1

To check the zone status of partition 3 you will use the following information:

Code – 1234 (a valid user code in partition 1)

Command – Zone

Extended Command – Status

Data – P3 (Partition number)

***You can only check the zone status of a partition when the partition is unarmed**

The SMS should look like this:

1234 zone status p3

To check the bypass status of zone 1 you will use the following information:

Code – 1234 (a valid user code in partition 1)

Command – Bypass

Extended Command – Status

Data – 1 (Zone number)

The SMS should look like this:

1234 bypass status 1

To check the PGM status of PGM 4 you will use the following information:

Code – 1234 (a valid user code in partition 1)

Command – PGM

Extended Command – Status

Data – 4 (PGM number)

The SMS should look like this:

1234 pgm status 4

All status commands:

Action	Code	Command	Ext. Comm	Data
Retrieve the status of all partitions	1234	Arm	Status	All
Retrieve the status of P1	1234	Arm	Status	P1
Retrieve the status of P3 & P6	1234	Arm	Status	P3, S6
Retrieve the status of zones in partition 1	1234	Zone	Status	P1
Retrieve the status of zones in partition 1 & 3	1234	Zone	Status	P1, P3
Get PGM 8's status	1234	PGM	Status	8
Get PGM Gate's status	1234	PGM	Status	Gate
Retrieve bypass status of zone 1	1234	Bypass	Status	1
Retrieve status of "Lounge"	1234	Bypass	Status	Lounge

Command Table

Action	Code	Command	Ext. Command	Data
Phone Numbers				
Add phone number as an Master number	1234	Add	Master	074 049 2481
Add phone number as an Arm number	1234	Add	Arming	073 917 0759
Add phone number as a Reporting number	1234	Add	Reporting	071 348 9467
Deleting a phone number	1234	Delete		074 049 2481
Reporting				
Turn on reporting for partition events	1234	Report	On, P1,P2,P3.....	074 049 2481
Turn off reporting for global events	1234	Report	Off Global	073 917 0759
Turn on reporting for partition and global events	1234	Report	On P1, P2, Global	071 348 9467
Turn on full reporting	1234	Report	Type	Full
Turn on partial reporting	1234	Report	Type	Reduced
Turn on raw data reporting	1234	Report	Type	Raw
Increase the reporting threshold to 50 SMSes	1234	Report	Threshold	50
Arm/Disarm				
Away arm all partitions	1234	Arm		All
Away arm P1 & P3	1234	Arm		P1, P3
Stay arm P2 in stay profile 3	1234	Arm	S3	P2
Stay arm P1 & P4 in stay profile 1	1234	Arm	S1	P1, P4
Disarm all partitions	1234	Disarm		All
Disarm P2	1234	Disarm		P2
Disarm P5 & P6	1234	Disarm		P5, P6
Setting Time				
Set the X-SMS to retrieve the time once a week	1234	Add	Time	061 458 2504
Naming				
Assigning a site name	1234	Site	Name	Home
Name partition 1 "Main House"	1234	Partition	Name	1:Main House
Name partition 2 as "Granny Flat" & partition 3 as "Garage"	1234	Partition	Name	2:Granny Flat, 3:Garage
Name zone 1 as "Kitchen"	1234	Zone	Name	1:Kitchen
Name zone 2 "Lounge" & zone 5 "Patio"	1234	Zone	Name	2:Lounge, 5:Patio
Name PGM 5 Lights	1234	PGM	Name	5:Lights
Bypass/Unbypass				
Bypass zone 1	1234	Bypass		1
Bypass zone 3,4,8,10	1234	Bypass		3,4,8,10
Bypass named zone "Lounge" & "Kitchen"	1234	Bypass		Lounge, Kitchen
Unbypass Zone 5	1234	Unbypass		5
Unbypass "Kitchen"	1234	Unbypass		Kitchen

Action	Code	Command	Ext. Command	Data
Turn PGM's On/Off				
Turn PGM 1 on	1234	PGM	On	1
Turn PGM 3, 4 & 5 off	1234	PGM	Off	3,4,5
Pulse PGM 2 Low	1234	PGM	PulseL	2
Pulse PGM 3 High	1234	PGM	PulseH	3
Panel Status				
Retrieve the status of all partitions	1234	Arm	Status	All
Retrieve the status of P1	1234	Arm	Status	P1
Retrieve the status of P3 & P6	1234	Arm	Status	P3, S6
Retrieve the status of zones in partition 1	1234	Zone	Status	P1
Retrieve the status of zones in partition 1 & 3	1234	Zone	Status	P1, P3
Get PGM 8's status	1234	PGM	Status	8
Get PGM Gate's status	1234	PGM	Status	Gate
Retrieve bypass status of zone 1	1234	Bypass	Status	1
Retrieve status of "Lounge"	1234	Bypass	Status	Lounge
Event Log				
Retrieve the last 5 Events	1234	Event	Panel	5
Lockout Phone Number				
Temporarily disable a phone number	1234	Lockout	On	074 049 2481
Enable a phone number after being disabled	1234	Lockout	Off	074 049 2481
Manage Airtime				
Save balance string in the SMS module	1234	Airtime	Command	Enter the string supplied
Query airtime balance	1234	Airtime	Balance	
Add airtime	1234	Airtime		Network supplied string