



www.vip-vision.com

MODEL: NVR4PROPACK

Professional IP Surveillance Pack

Network Video Recorder with 4 Security Cameras

‘QUICK INSTALLATION GUIDE’



NVR

- Advanced H.264 Video Compression Technology
- Multiplex Operation
- Long Recording Duration
- Intelligent Video Motion Detection Recording
- Remote Network Surveillance & Backup Functions
- Easy to operate with USB Mouse or IR Remote.
- System Auto recovery after power loss (blackout)

4 x IP Day/Night Cameras

- High Quality 1.3MP CMOS Image sensor
- IR Night view range of 20 metres
- 720p Resolution

In-Built POE Network Switch

- Centralise your cameras away from your NVR
- Power and video over the same cable
- View over the internet via Smartphone or PC

Package Contents (Before installation, please ensure you have all the parts listed below).

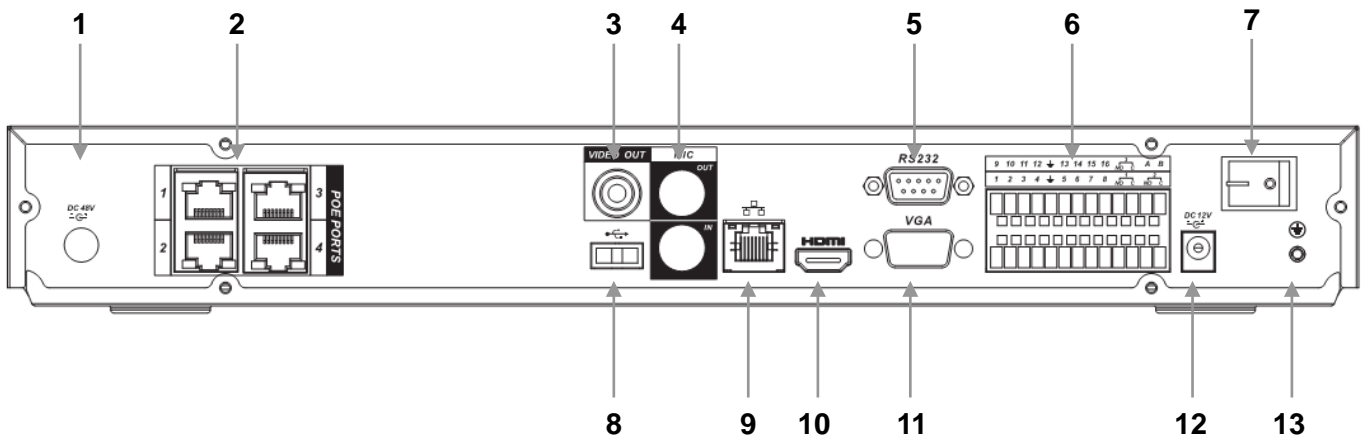
 <p>A black Network Video Recorder (NVR) with a front panel featuring several buttons and a small display.</p>	<p>1 x Network Video Recorder with 1TB Hard Disk Drive</p> <ul style="list-style-type: none">• Advanced H.264 Video Compression Technology for High Quality Images• Easy to Operate• Can be Connected to a PC Network for Remote Viewing & Backup (Software on Disc)
 <p>A white, cylindrical outdoor camera with a lens and several small LEDs around it. The text 'x4' is overlaid in the bottom right corner of the image.</p>	<p>4 x Day/Night Weatherproof Colour Cameras with Infrared LEDs - 20m Range</p> <ul style="list-style-type: none">• IR LEDs for Viewing in Total Darkness up to 20m (B&W Mode)• 720p Resolution, 1.3 Megapixels• Ideal for use Indoors and Out• Power and video over one cable
 <p>A blue Ethernet cable with RJ45 connectors on both ends. The text 'x5' is overlaid in the bottom right corner of the image.</p>	<p>5 x Ethernet Cables</p> <ul style="list-style-type: none">• Combined DC Power and Video Leads• Pre-terminated - Allowing Simple Plug-in Connection – No Tools Required• 1 x 1.5m, 2 x 10m, 1x 20m, 1 x 30m Leads Supplied
 <p>A black HDMI cable with standard connectors on both ends.</p>	<p>1 x HDMI Connection Cable</p> <ul style="list-style-type: none">• Connect the NVR to a HDMI ready TV or Monitor
 <p>A black USB mouse and a black IR remote control with several buttons.</p>	<p>1 x USB Mouse</p> <ul style="list-style-type: none">• To operate the NVR <p>1 x IR Remote Control with batteries</p> <ul style="list-style-type: none">• To operate the NVR
 <p>Two power supplies: one is a black brick-style power supply with a power cord, and the other is a smaller black power supply with a power cord. The text 'x2' is overlaid in the bottom right corner of the image.</p>	<p>2 x Switch Mode Low Voltage Power Supplies</p> <ul style="list-style-type: none">• 1 x 12v Power Supply for use with the NVR• 1 x 48v Power Supply for use with in-built POE Network Switch• Advanced Switch Mode Technology

Installation

Before installing this unit, please read through the following points:

- Do not place cords from the AC adapter where they can be pinched or stepped on.
- Leave at least 50mm of space between the NVR and other objects to allow air circulation.
- Do not expose the NVR or Cameras to excessive heat, cold, or moisture.
- Never immerse any component in water, and do not spray cleaners or solvents on the unit. Unplug units before cleaning. When cleaning, use a damp, lint-free cloth only.
- Do not place heavy objects on cords, or cover cords with rugs or carpet.
- Service should be handled only by qualified technicians.

Rear Panel

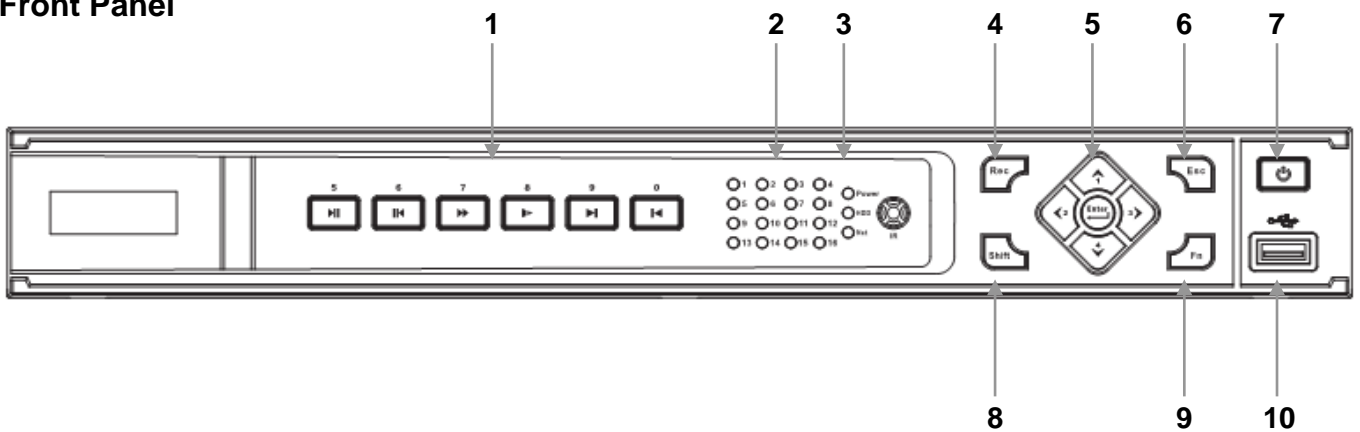


1	“DC48V”	Connect to 48V power supply.
2	“POE PORTS”	Powered Ethernet ports to connect to supplied cameras.
3	“VIDEO OUT”	BNC Analogue Video Out connection.
4	“MIC”	BNC Analogue Audio In/Out connection.
5	“RS323”	RS323 connector for optional terminal configuration.
6	“ALARM INPUT”	Alarm input panel, see User Manual or Included CD for more information.
7	“POWER”	Switch on/off to supply power to the device.
8	“USB PORT”	Connect USB Mouse.
9	“WAN PORT”	Connect to Network/Internet for remote monitoring.
10	“HDMI”	Connect to Digital Monitor with supplied HDMI cable.
11	“VGA”	Connect to monitor using VGA cable. (Not Supplied)
12	“DC12V”	Connect to 12V power supply.
13	“GROUND”	Alarm input ground end.

Connection Guide

1. Mount the 4 Cameras as required and connect them to the in-built POE Network Switch using the supplied Network Cables.
2. Connect the **48V Power Supply** to the in-built POE Network Switch portion.
3. Connect the **12V Power Supply** to the NVR portion.
4. Plug both power adaptors into a Power-point.
5. Switch NVR on from back of device. Hold Power button for 3 seconds.
6. The power LED at the front of the NVR should now be illuminated and the unit will make a loud beep sound to indicate it is powered.
7. Connect the included mouse to the USB port on the front or back.

Front Panel






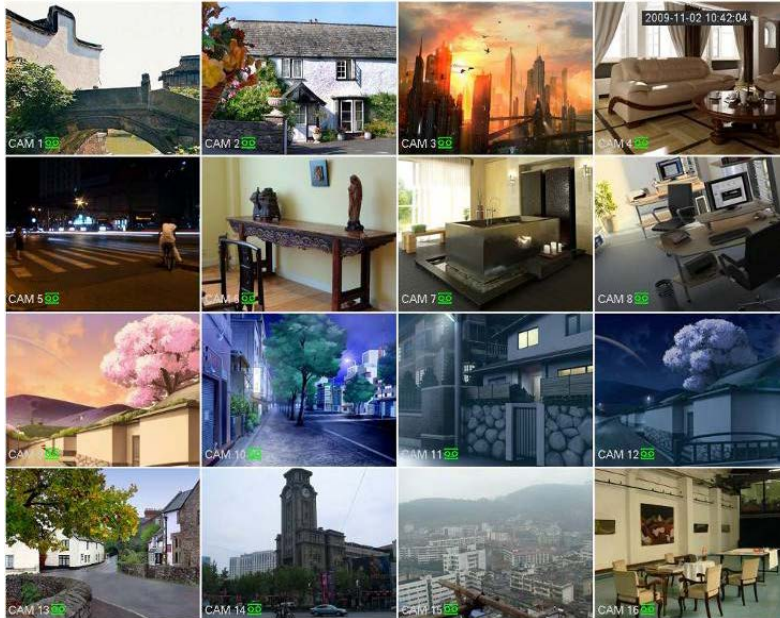
1,5	“NUMERALS”	Buttons marked with numbers can be used to enter numeric data when in numeric text entry mode (See “SHIFT”)
1	“PLAYBACK”	Playback controls used when viewing recorded footage.
2	“CAMERA LIGHTS”	Displays recording cameras. (Unit limited to four maximum)
3	“STATUS LIGHTS”	Shows device is powered/reading HDD/connected to network.
4	“REC”	Manually start/stop recording.
5	“DIRECTION CONTROLS”	Used to select and enter options in menus.
6	“ESC”	Go to previous menu/cancel current operation.
7	“POWER”	Hold for three seconds to power on/off device.
8	“SHIFT”	Switch between text entry modes. (Numerals, English, Capitals, etc.)
9	“FN”	Various auxiliary functions.
10	“USB PORT”	Connect USB storage device or USB Mouse.

Main Screen

Once booted, you will be presented with the screen below.

Each camera view will have one or more symbols from below:

1		Currently Recording	3		Video Loss
2		Motion Detected	4		Camera Lock



NVR4PROPACK only supports four cameras.

System Menu

- Right Clicking anywhere on the screen will bring up the System Login screen.
- Once Logged In, right clicking again will bring up a menu.
- Selecting "MAIN MENU" will show the system menu.
- Right click or press the ESC button to return to previous menus, click on the icon to enter menus.

Channel View Menu

Moving the mouse to the top of each channel in the live view screen will show a menu.

From left to right:

- Playback: Show, in live view, the past few minutes of footage.
- Search tag: Turn on search tag.
- Save: Save the currently displayed file to USB device.
- Camera Source: Change the IP Device for this feed.
- Close: Close the channel view menu.

Set the Time and Date

When using your NVR for the first time, you will have to set the SYSTEM TIME.

- Right clicking anywhere on the screen will bring up the password menu.
Use the mouse to enter the NVR admin password with the on-screen keypad.

Default:

The default username is **admin**, the password is also **admin**.
(Users can alter the password later. Please refer to the Advanced set up guide CD)

Important:

If you change the date or time on your NVR after the recording function is activated, the recorded data may be deleted. After setting the date and time, it's recommended to clear all HDD data, and start recording again.

- Right click to open the menu and select "MAIN MENU".
- Select "SETTING"
- Select "GENERAL"
- Set System Time, Date Format and DST (Daylight Saving Time) for your region.
- **Click Save before clicking OK**

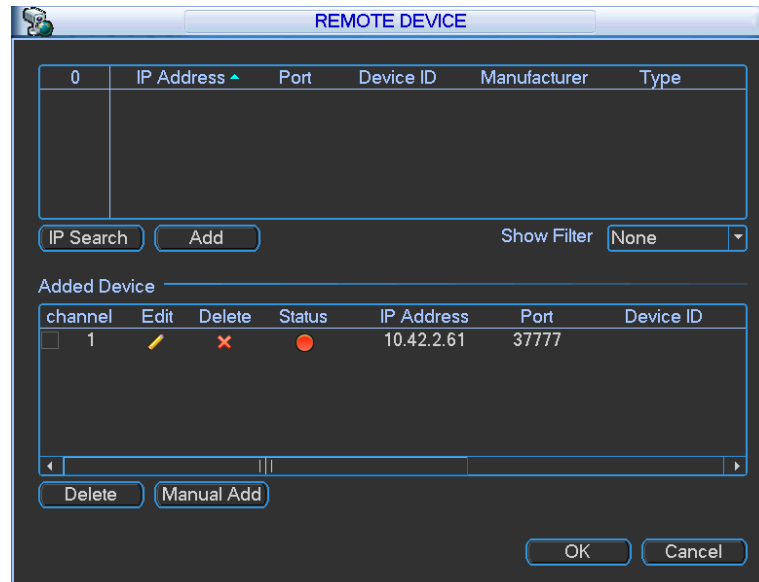
The screenshot shows the 'GENERAL' settings window for an NVR. The window has a dark background with light text and buttons. At the top, there's a title bar with the word 'GENERAL'. Below it, the 'System Time' is set to '2012 - 09 - 17 12 : 27 : 47' with a 'Save' button to its right. The 'Basic Settings' section includes 'Date Format' (YYYY MM DD), 'Date Separator' (-), 'DST' (unchecked), and 'Time Format' (24-HOUR). The 'Device Settings' section includes 'Language' (ENGLISH), 'Video Standard' (PAL), 'Device No.' (8), 'Device ID' (NVR), 'HDD Full' (Overwrite), 'Pack Duration' (60 min), and 'Realtime Play' (5 min). The 'Other Settings' section includes 'Startup Wizard' (unchecked), 'Navigation' (unchecked), 'Auto Logout' (10 min), and 'IPC Time Sync' (24 Hours). At the bottom, there are three buttons: 'Default', 'OK', and 'Cancel'.

To Connect Cameras

NOTE:

The NVR will most likely automatically configure the IP address of a camera connected to the dedicated POE Ports on the back of the device.

- Right click to open the menu and select "MAIN MENU".
- Select "SETTING"
- Select "REMOTE DEVICE"

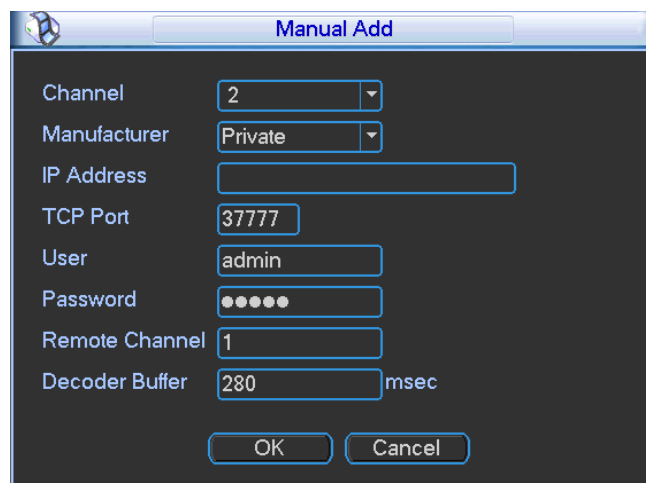


Adding new Cameras

1. Click IP Search, this will list all cameras connected in the upper panel.
2. Click on the camera you wish to connect and click 'Add'

Manual Adding

1. Click Manual Add
2. Enter the information about the camera, if you do not know this information, you must manually setup the camera on another network before connecting.

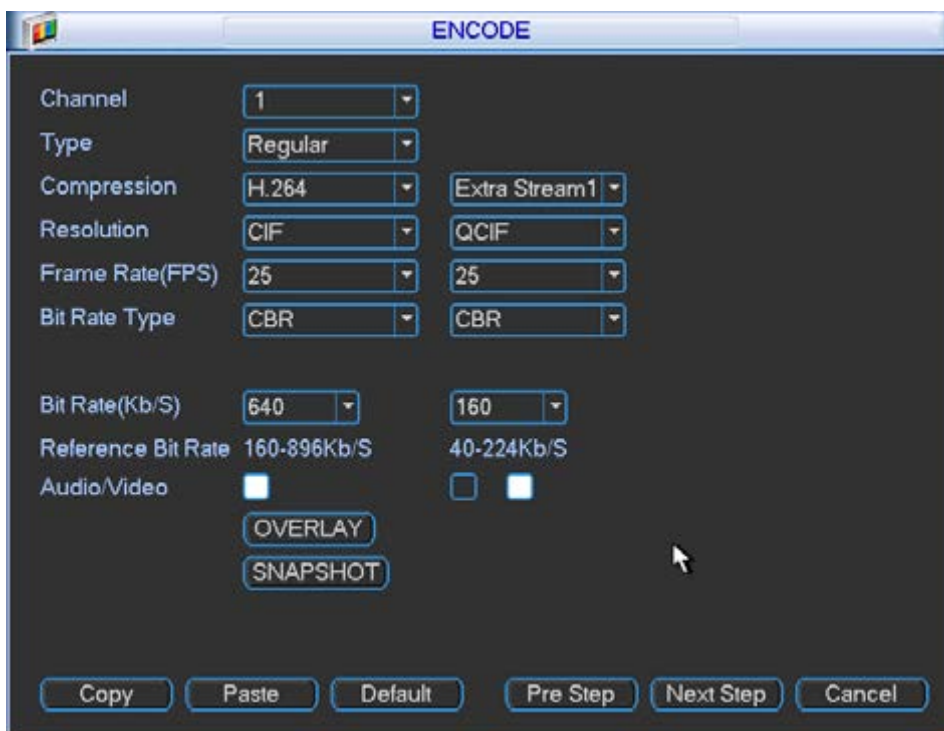


To Set Up Recording Rates

Record Times:

The NVR4PROPACK system is capable of storing 2 weeks of recorded footage based on 1Tb of storage and the 4 included 1.3MP Cameras set to 720P @ 15fps and VBR @ Quality 5.

- Right click to open the menu and select “MAIN MENU”.
- Select “SETTING”
- Select “ENCODE”




We recommend:

That each camera be set to **H.264** with a maximum of **1280x720** resolution, **15fps**, Bit Rate: **VBR** with **Quality set to 5**. While any of the cameras may be set higher, please be aware that it will reduce the total recording time to less than 2 weeks.

You may also set individual encoding options for **Regular**, **Motion Detect** and **Alarm** Recording

To Begin Recording

Once you have successfully set the Date and Time, exit the Menu by right clicking or pressing the ESC button. By default, the NVR will begin recording when it is properly connected to the cameras and has an installed HDD. If it is recording, the recording icon “” will be displayed on screen.

Overwriting View:

When the system is in Overwrite recording mode, the oldest recorded data will be overwritten automatically. **This NVR System is set to Overwrite by factory default.** You may set this option in the “**GENERAL**” Menu.

Motion Detection

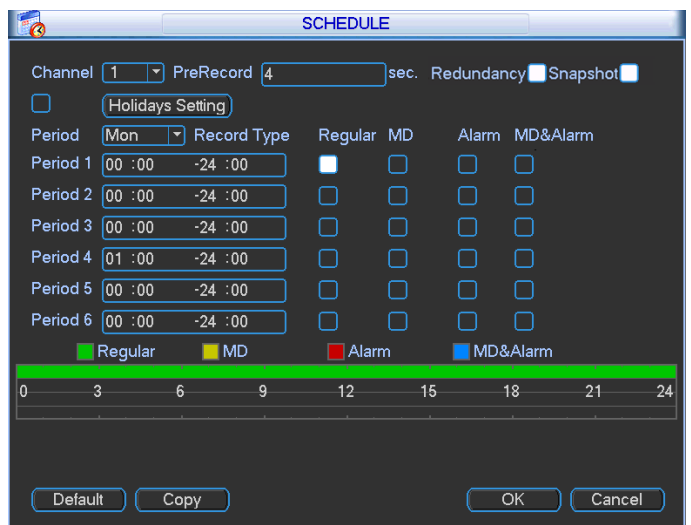
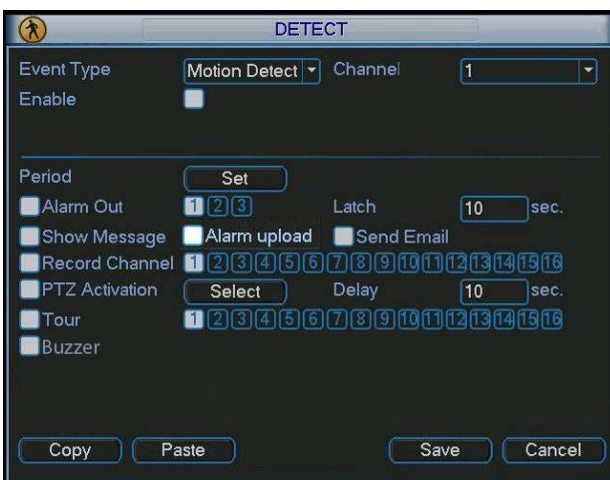
Motion detect recording is set per camera, per time period and can also be set to detect in certain portions of the screen.

- Right click to open the menu and select “MAIN MENU”.
- Select “SETTING”
- Select “DETECT”
- Select ‘Motion Detect’ from Event Type
- Select channel from Channel drop down
- Check the Enable box
- **Ensure Record Channel is checked, and a Region has been selected.**
- Click **Save**.

More Settings:

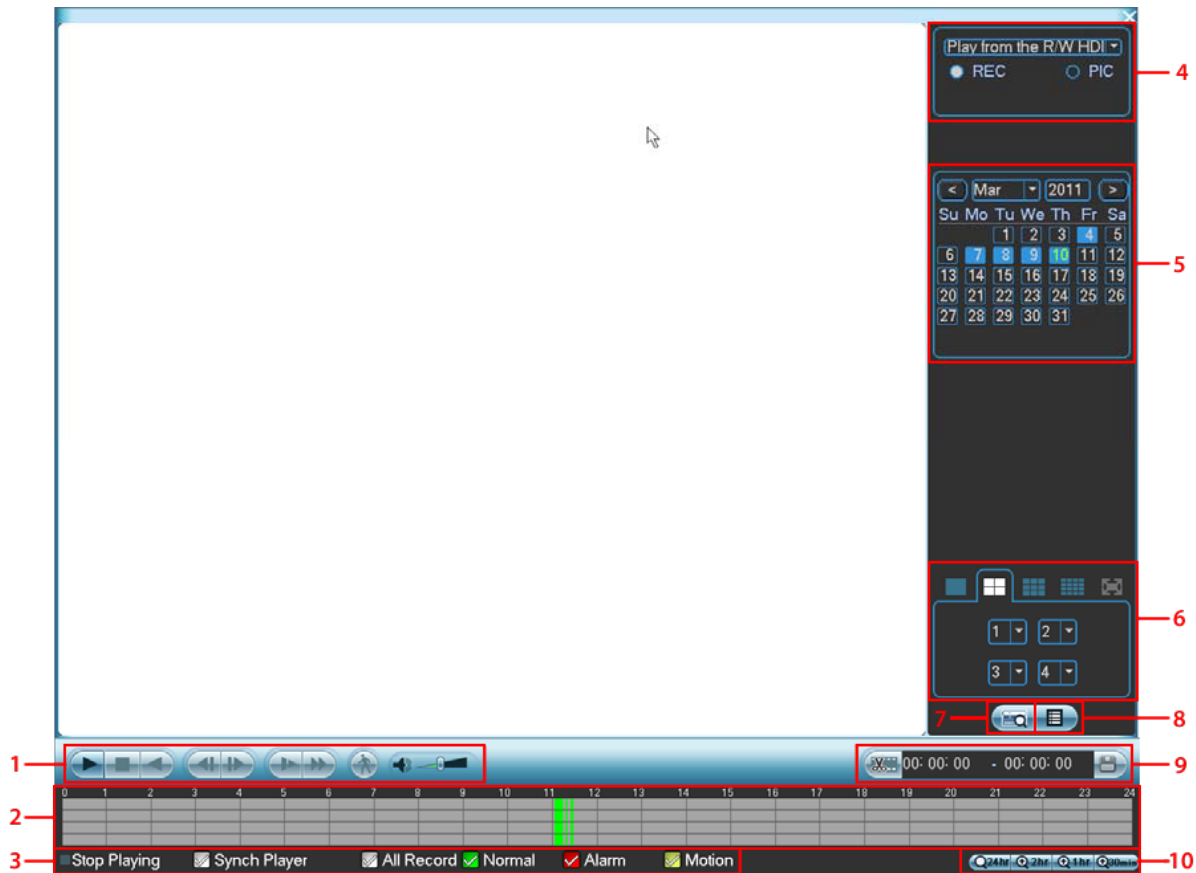
Latch	Time to wait after motion is detected, before checking for motion again.
Region Select	Select region of feed within which motion detection will occur. Click and drag with the mouse to arm/disarm areas of the feed. Motion detected in red areas will cause recording, motion will not be detected in grey areas. Press “ ENTER ” to save.
Sensitivity	Select from 1 to 6 the sensitivity of the recording, 6 being the most sensitive to movement.

- Right click to open the menu and select “MAIN MENU”.
- Select “SETTING”
- Select “SCHEDULE”
- Select a channel.
- Choose a period and set the time options to the period you wish to motion record, bearing in mind system uses **24 hour time**.
- Check **MD** for this period.
- Click **OK** to save.













Playback

- Right click to open the menu and select “MAIN MENU”.
- Select “SEARCH”



1. Playback Controls

- Click  to begin playback, pressing it again will pause playback.
- Click  to stop playback.
- Click  to begin backwards playback
- Click  or  to skip to the next session, or while paused to skip backward/forward a single frame.
- Click  during playback to play slower.
- Click  during playback to play faster.
- Click  to do a smart search.
- Use  to control the volume.
- Click  to take a snapshot of the current frame (In fullscreen mode).

2. Seek Control

This shows the recorded data for the selected day.

Normal recording in green, Alarm recording in red and Motion recording in yellow.

Clicking on any part of the recorded data will jump to that time.

This control is made up of 1-4 bars, which correspond to each camera channel currently viewed.

3. Playback Mode

Display only recordings of the selected type(s).

4. Search Type

Select whether to search from hard drive or external source.

Select whether to search recordings or snapshots.

5. Calendar

Select which day to review recording.

6. Channel Selection Pane

Choose how many feeds should be present on screen and enter fullscreen mode.

7. Card Number Search

This button is not active on this version of the device.

8. File List Switch

Show File List menu.

From here you can search for individual recorded files, entering a date into the search bar at the top will limit the search to all file recorded **after that time**, on the day selected in the **calendar control**(see above). The letter **R/M/A** next to the file indicates a **Regular/Motion Detect/Alarm** recording respectively.

Checking the boxes next to these files and pressing the 'save' button in the **Clip and Save** control (below) will back up the selected file on disk.

9. Clip and Save

Use this control to save a single clip from the recordings.

Clicking the '**clip**' button will automatically select everything visible in the seek control.

You may then adjust the times of this clip using the time controls.

Clicking the '**save**' button will then save this portion to disk.

10. Time Bar Period

You may adjust the size of the time bar in this control to show only 24hrs/2hrs/1hrs/30mins of recording surrounding the current time of recording being shown.

Networking

Important:

Before setting up remote access for your NVR, you will need to have a good understanding of computer networking. Otherwise please seek the assistance of a qualified I.T. person.

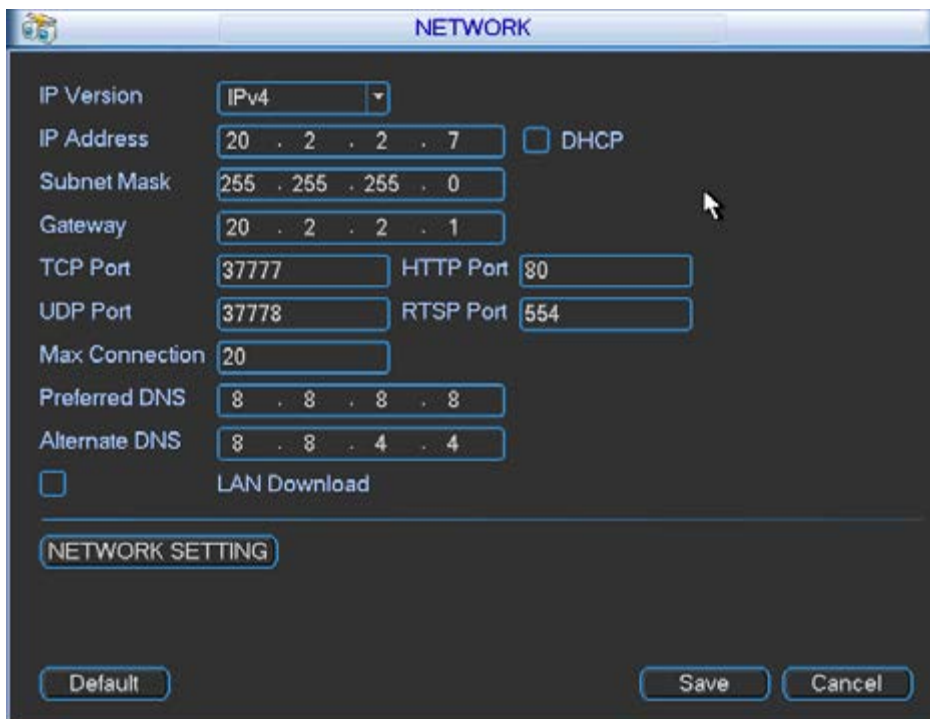
- Right click to open the menu and select "MAIN MENU".
- Select "SETTING"
- Select "NETWORK"

The device comes pre-configured to DHCP. If not, you need only to check the DHCP box and click save, settings will be allocated automatically.

If this does not suit your needs, see the example below.

Choose "Static" to allocate an IP address manually, and then enter the IP Address, Subnet mask, and Gateway.

For Example we have used:



The screenshot shows a 'NETWORK' configuration window with the following fields and values:

IP Version	IPv4	
IP Address	20 . 2 . 2 . 7	<input type="checkbox"/> DHCP
Subnet Mask	255 . 255 . 255 . 0	
Gateway	20 . 2 . 2 . 1	
TCP Port	37777	HTTP Port 80
UDP Port	37778	RTSP Port 554
Max Connection	20	
Preferred DNS	8 . 8 . 8 . 8	
Alternate DNS	8 . 8 . 4 . 4	
<input type="checkbox"/>	LAN Download	

At the bottom, there are buttons for 'Default', 'Save', and 'Cancel'. A 'NETWORK SETTING' button is also visible above the bottom row.

Should you wish to set your DVR up for internet access, you will require:

- An ADSL connection of 512/512 minimum (ADSL2 recommended).
- Ideally, an External Static IP address from your Internet Service Provider, if not applicable, seek out a Dynamic DNS Service and follow their instructions.
- An ADSL Modem which supports Port Forwarding.
- A network connection between your NVR and the ADSL Modem.
- Set your DVR up on the local network by giving it a compatible IP Address.
- In your modem Port Forward port 88 to the IP address of your DVR.

DMSS Mobile App

App available for Android, iOS, Blackberry, Symbian, Windows Mobile and Windows 7 mobile

From your compatible Smartphone, access the App Marketplace and download the free “DMSS Lite” App.

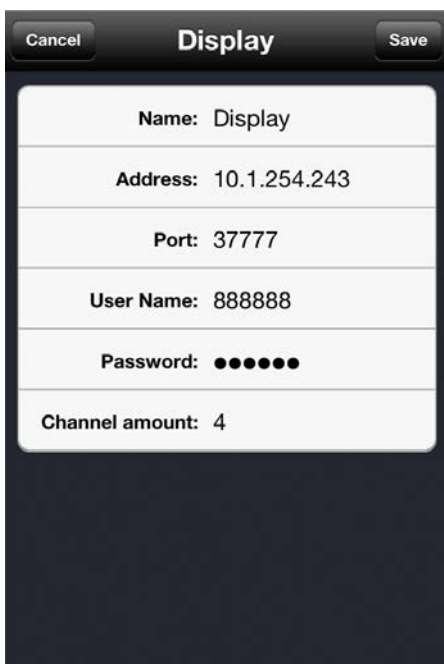
This will be listed as:

- iDMSS for iOS
- gDMSS for Android
- DMSS for other



Setting Up:

- Enter “Device manager” and select “**ADD**”.
- Enter in your devices details: Name may be anything, refer to your network settings for Address and TCP Port.
- Select “**SAVE**”
- Select “**HOME**” and enter “Real-time Monitor”
- You may tap any square on this screen and you will be able to select a feed from your NVR.
- You be returned to your Live View screen where your camera feed will now be displayed. Your Live view feed configuration will be saved for the next time you open the app.



Troubleshooting

Please refer to the FAQ table below for easy troubleshooting. The table below describes some typical problems and their solutions. Please consult these guides before contacting your NVR dealer.

PROBLEM	SOLUTION
No power	<ul style="list-style-type: none"> - Check power cord connection. - Confirm that there is power from the outlet. - Ensure that the 12V 5A is connected to the NVR
Motion Detection not working	<ul style="list-style-type: none"> - Ensure that motion detection is enabled for that channel in the "DETECT" menu.
No live video	<ul style="list-style-type: none"> - Check the cameras cable and connections. - Check the monitors cable and connections. - Ensure you are not in playback mode. - Ensure that the 48V power supply is connected to the switch and the 12V 5A is connected to the NVR
No recorded video	<ul style="list-style-type: none"> - Check if the HDD is installed and connected properly.
NVR keeps rebooting	<ul style="list-style-type: none"> - Ensure that the 12V 5A is connected to the NVR
HDD detection failed	<ul style="list-style-type: none"> - Ensure that the 12V 5A is connected to the NVR
Can't detect your USB flash drive	<ul style="list-style-type: none"> - Use another USB flash drive to test. - Ensure it is formatted to FAT32. - Check Appendix B of User manual (on CD).
Can't view the NVR images over the network with web browser	<ul style="list-style-type: none"> - Update the Quicktime program - Ensure you have installed the ActiveX - Check Section 8 of User manual (on CD).

This guide is intended as a Quick Set Up and Basic use manual only, please refer to the user manual on the included CD for all other details.

Limited Warranty

Cornick Pty Ltd (Seller) warrants its products to be in conformance with its own plans and specifications and to be free from defects in materials and workmanship under normal use and service for forty eight months from the date of original purchase. Sellers obligation shall be limited to repairing or replacing, at its option, free of charge for materials or labor, any part which is proved not in compliance with Sellers specifications or proves defective in materials or workmanship under normal use and service. Seller shall have no obligation under this Limited Warranty or otherwise if the product is altered or improperly repaired or serviced by anyone other than Seller.

For Warranty Service: Return transportation prepaid with a copy of your purchase receipt and contact details to:

RhinoCo Technology, 9 Hannabus Place, McGraths Hill, NSW 2756 Australia.

Seller has no obligation to attend the buyer's location to retrieve the goods or make repairs onsite.

- There are no warranties, expressed or implied, of merchant ability, or fitness for a particular purpose or otherwise, which extend beyond the description on the face hereof. In no case shall seller be liable to anyone for any consequential or incidental damages for breach of this or any other warranty, express or implied, or upon any other basis of liability whatsoever, even the loss or damage is caused by its own negligence or fault.
- Seller does not represent that the products it sells may not be compromised or circumvented; that the products will prevent any personal injury or property loss by burglary, robbery, fire or otherwise; or that the products will in all cases provide adequate warning or protection. Customer understands that a properly installed and maintained alarm system or video surveillance system may only reduce the risk of a burglary, robbery, or fire without warning, but it is not insurance or a guarantee that such will not occur or that there will be no personal injury or property loss as a result.
- Consequently, seller shall have no liability for any personal injury; property damage or other loss based on a claim the product failed to give any warning. However, if seller is held liable, whether directly or indirectly, for any loss or damage arising under this limited warranty or otherwise, regard less of cause or origin, seller's maximum liability shall not in any case exceed the purchase price of the product, which shall be the complete and exclusive remedy against seller.
- This warranty replaces any previous warranties and is the only warranty made by the Seller on this product. No increase or alteration, written or verbal, of the obligations of this Limited Warranty is authorized.

Please refer to the website (www.vip-vision.com) for a full list of trading terms.





PLEASE CUT OUT & RETURN THIS INFORMATION

WITHIN 14 DAYS OF PURCHASE TO:

RhinoCo Technology
9 Hannabus Place
McGraths Hill NSW 2756 Australia

Model: NVR4PROPACK
Professional Surveillance Pack Warranty Card

Name

Address

Suburb

State

Postcode

Email

Date of Purchase

Invoice Number

Daytime Phone

Where did you purchase your NVR4PROPACK?

Store Location

This information will only be used by the manufacturer and will not be sold to any third parties.

Dear Customer,

We appreciate your confidence in our product, and you can be certain that we will do everything possible to ensure that you are happy with your decision and that you have years of satisfaction from your NVR4PROPACK.

We take extreme care in the research, design and development of our products to ensure they meet your needs. Additionally, we keep in close contact with our dealers Australia wide, and should any problem occur, we will work closely with your local dealer to see that it is resolved quickly.

As a leading designer and manufacturer, we are continually endeavoring to exceed the expectations of our customers. Furthermore, we appreciate your input regarding potential design improvements, issues regarding our service and support, and any other ideas you may have which could help us to serve you better.

Please make any comments you have here:
