



PRESENTS THE NEW GENERATION IN

HIGH DEFINITION

2 MEGAPIXEL VIDEO SURVEILLANCE SYSTEMS

Up to **20X** Better Image Quality Than Traditional Analogue CCTV!

Watchguard

19/01/2010
14:24:03

Free: 16.6GB
CPU: 34%
Fan Speed: 1560 rpm
Installer Name:
Installer Phone No:

SET PRESET GO

- ZOOM +

PATROL FOCUS

Start Playback Schedule Guard Config

Complete pre-configured system with plug-in installation - no programming required



Designed as a high quality security solution ideal for small businesses, this Watchguard™ HD 4 Channel IP-based CCTV system utilises 2 MP digital cameras providing up to 20x greater image quality than traditional analogue CCTV systems. The state-of-the-art monitoring and recording software provides managers with the best tools to prevent crime, monitor work place safety and improve productivity.

High Definition 4 Camera Network Video Recorder (NVR) Pack

Imagine the clarity of a High-Definition TV on your CCTV system! With the Watchguard™ HD NVR System you can view, record and playback high-definition (2 Megapixel) surveillance footage up to 20 times* the quality of traditional CCTV systems. Using the latest MPEG4 video compression technology efficiently minimises video storage space. With ultra sharp 1600 x 1200 pixel image resolution, the Watchguard™ HD NVR System gives you smooth high definition recording at up to 12.5 frames per second per camera. Designed as a fully featured yet simple plug'n'play standalone product, the Watchguard™ HD NVR System is also prepacked with state-of-the-art features including:

- Multifunctional Playback with Smart Search
- Object detection and counting
- Event management – i.e email notification if camera signal is lost
- Digital Map – load a map of your premises and mark the camera's location
- Post-recording video enhancement
- Remote live view and backup
- Digital zoom up to 64x
- Varifocal 4-9mm IR corrected megapixel camera lenses – adjust optical zoom to suit your required store view

Installing the system is as simple as plugging the cameras through a single pre-terminated CAT5 cable into the designated PoE sockets at the back of the Watchguard™ HD NVR and powering on. Once on, you will be able to operate the NVR through its intuitive mouse orientated menu system and protect your business with first-class video evidence.

* Many traditional CCTV systems installed are only capable of recording at CIF (352x288 pixels – approx. 0.1 megapixel) resolution. The Watchguard™ HD NVR System has a recorded resolution 20 times superior compared with CIF resolution. Compared with the most advanced analogue CCTV systems currently available which are capable of recording at maximum D1 resolution (704x576 pixels – approx. 0.4 megapixels), the Watchguard™ HD NVR System has a recorded resolution 5 times superior!



Package Includes:

- 1 x Watchguard™ HD IP based NVR with 1 TB hard drive
- 4 x Watchguard™ HD 2.0 megapixel IP dome cameras
- 2x 10m, 1x 20m, and 1x 30m CAT5e camera connection cables
- 1x LAN connection cable (optional use)
- 1 x USB keyboard and mouse

Watchguard™ HD 2.0 Megapixel IP Dome Cameras Feature:

- Embedded Linux OS
- TI Davinci hardware compression
- Vari-focal lens 4-9mm
- 1 channel audio compression (microphone required)
- High resolution video preview: 1600 x 1200 pixels
- Support for HD720/4CIF/DCIF/2CIF/CIF/QCIF real time compression
- Dual compression stream
- Motion detection, and notification on PC client
- Supported protocols: TCP/IP, UDP/IP, HTTP, FTP, SMTP, DHCP, DNS, DDNS, NTP
- Internet browser support for network preview
- Watermark function
- Sensor alarm input and relay output function
- Network voice talk function support



Watchguard™ HD 2.0 Megapixel IP Camera Specifications

Image Sensor	2.0 Megapixel 1/3" CMOS Sensor
Horizontal Resolution	1600 (H) x 1200 (V)
Min. Illumination	0.5 Lux @ F1.2
Lens	4-9mm Vari-focal
Supported Resolutions	1600 x 1200, 1280 x 720, 800 x 600, 704 x 576, 640x 480, 528 x 384, 704 x 288, 352 x 288, 176 x 144
Frame Rate	25fps(704x576), 25fps(1280x720), 12.5fps(1600x1200)
Video Compression	MPEG-4 (Dual Stream Supported)
Dimensions	145 (Dia) x 159.8mm

Watchguard™ HD IP Base NVR Features:

- Stand alone PC server platform
- IP based megapixel solution
- Digital zoom capabilities
- Supports megapixel IP cameras - up to 5 MP
- Triple monitor display
- E-map and GUI recording schedule
- Digital PTZ and multiple viewer
- Smart detection of 6 events and 10 instant responses
- Advanced video analytic functions such as smart search + object counting
- Integrated 4 Port POE switch for simple plug-in installation
- POS and I/O device integration (optional - additional part req.)
- Remote live viewer, playback, backup, I/O control, desktop config.
- CD/ DVD/ USB/ network backup

Main Intelligent Functions



General Motion



Missing Object



Foreign Object



Lose Focus



Camera Occlusion



Signal Lost

Watchguard™ HD IP Base NVR Specifications

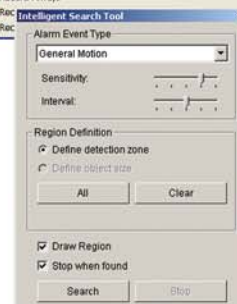
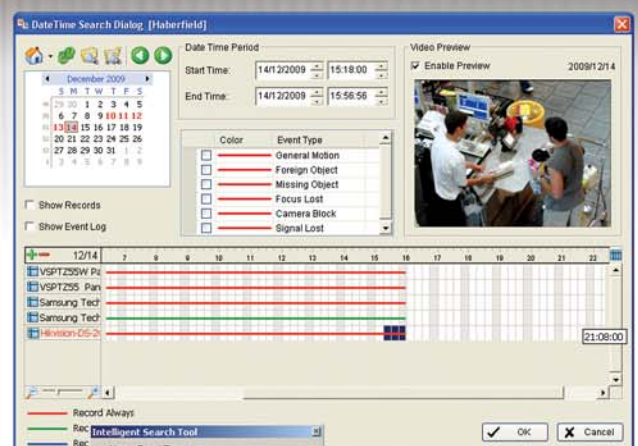
Max. # of camera	4
Audio Support	Unlimited/ 2 Way Audio
Compression Format	MPEG4 / M-JPEG / H.264
Video Resolution	Supports CIF, 2CIF, D1, 1.3MP, 2MP, 3MP, 5MP
Operating System	Windows Embedded Standard
Divided Screen	1 / 4 / 6 / 9 / 10 / 13 / 16 / 25 / 36 / 49 / 64 / 12 + 1 / 16+1
Video Analytics	General motion, missing object, foreign object, camera occlusion, lose focus, signal loss
Recording Mode	Continuous, event, motion, scheduled, manually, w/ audio, auto recycle
Instant Response Mode	E-map Popup, On Monitor, E-mail, Phone Call, Warning Sound, Trigger Digital Output, PTZ Active, SMS, Central Management, FTP Upload
Video Display Output	VGA, HDMI/DVI
USB Port	6 x USB 2.0 ports (2 x Front, 4 x Back)
Storage Included	1 Terrabyte HDD
Backup Methods	CD/ DVD/ LAN/ USB
Dimensions	325(L) x 208(W) 43(H) mm

Smart Search

Save time and effort in accurately narrowing down the desired events on the recorded footage. Gone are the days of sitting in front of the DVR and painfully going through repetitive footage hours upon hours for that 5-second incident. Watchguard™ HD NVR features a Smart Search function which allows you to simply mark the area where the event occurred and it will automatically review the footage for suspicious events and present a list of possible occurrences for your review.

People / Object Counting

Ever wondered how many customers have come into your store today? Enhance your marketing efforts through the Watchguard™ HD NVR and its in-built people counting application! Simply select the areas where people walk through and the Watchguard™ HD NVR will count how many people have walked in and out. The numbers counted are recorded along with the surveillance footage for later review, and it can even be viewed as a graph or the CSV data exported for review in common spreadsheet softwares. This function can also be applied to other counting object tasks such as vehicle movements or production line monitoring.



Comparison Traditional Analogue Camera VS 2 Megapixel Camera



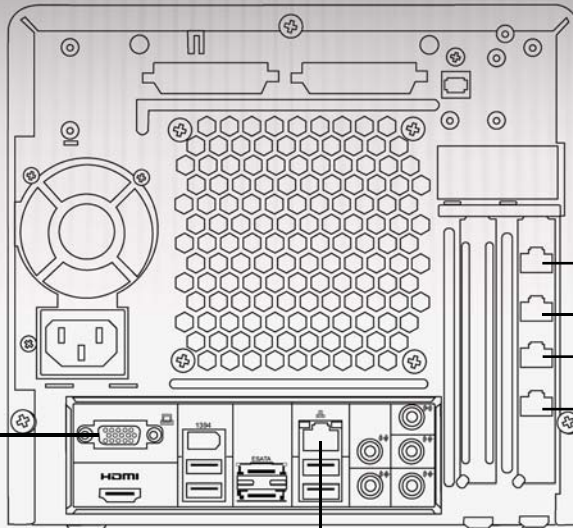
VS

These images clearly illustrate the vastly improved image quality of megapixel vs traditional analogue CCTV. When zooming in to see details such as the trailer registration number shown here, the analogue camera's image is unidentifiable whereas the megapixel camera provides a sharp and clear picture. This increased level of detail can make all the difference in providing the evidence you need - whether identifying objects, people's faces or their actions.

CONNECTION DIAGRAM



connect to monitor



connect LAN cable to camera



connect LAN cable to camera



connect LAN cable to camera



connect LAN cable to camera



connect LAN cable to internet

Your Local Dealer :