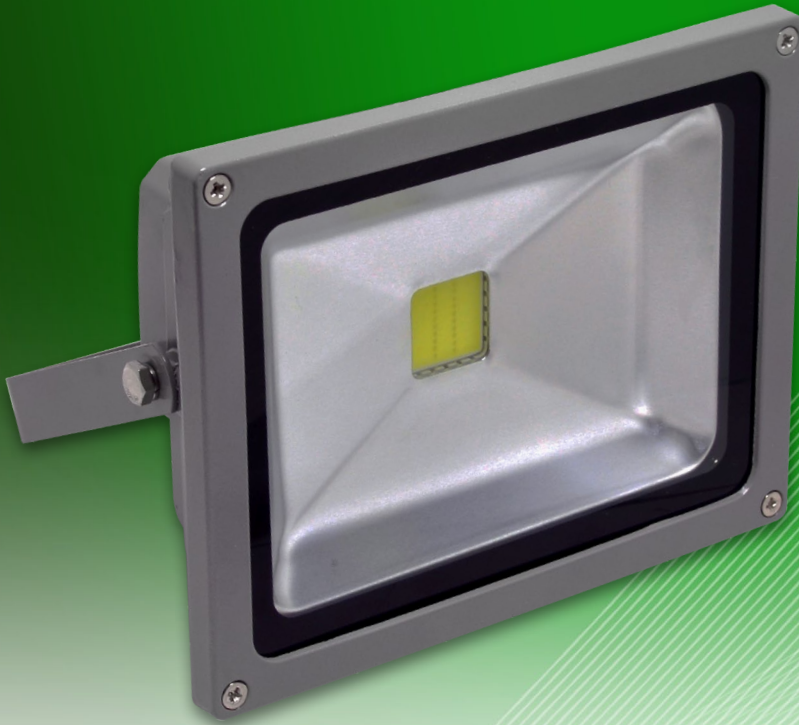


20W LED Flood Light (1800lm)

Built For Commercial Use



Also Available in Black Chassis

Overview

Operating on 20 watts, this LED Flood Light uses 50-70% less power than traditional HID lights for the same light output. These lights are ideal for outdoor use in both commercial and residential areas.

Key Benefits

LED lights reach maximum intensity immediately after being switched on. They do not require time to warm up. In the event of a momentary loss of power, HID lamps can take up to 20 minutes to turn back on.

The fixture is completely free of hazardous materials including mercury and lead and boasts an annual energy saving that equates to over two metric tons of CO₂ saved per fixture per year!

- Use up to 70% less power than HID lamps.
- LED flood lights has greater lifespan versus halogens.
- Cool light reduces the ambient temperature.
- Energy saving and environmentally friendly.
- No warm up or cool down periods.
- Resistant to shock and vibration.
- No audible buzzing sounds or light flickering.
- No UV or IR radiation.
- Reduce carbon emissions.

Specifications

| | OPTICAL |
|---------------------------|---------------------------|
| System Power Consumption | 20W |
| LED Output Power | 1800lm |
| Colour Temperatures | 3000K / 4500K / 6500K |
| Colour Rendering Index | >75 |
| Rated LED Lifespan | 50,000 Hours |
| Beam Angle | 120° |
| | ELECTRICAL |
| Input Voltage | 85V-265V AC / 50Hz - 60Hz |
| Lamp Efficiency | >90% |
| Power Factor | >0.95 |
| | GENERAL |
| Dimensions | L180 x W140 x D135 (mm) |
| Ingress Protection Rating | IP65 |

Your Local Dealer