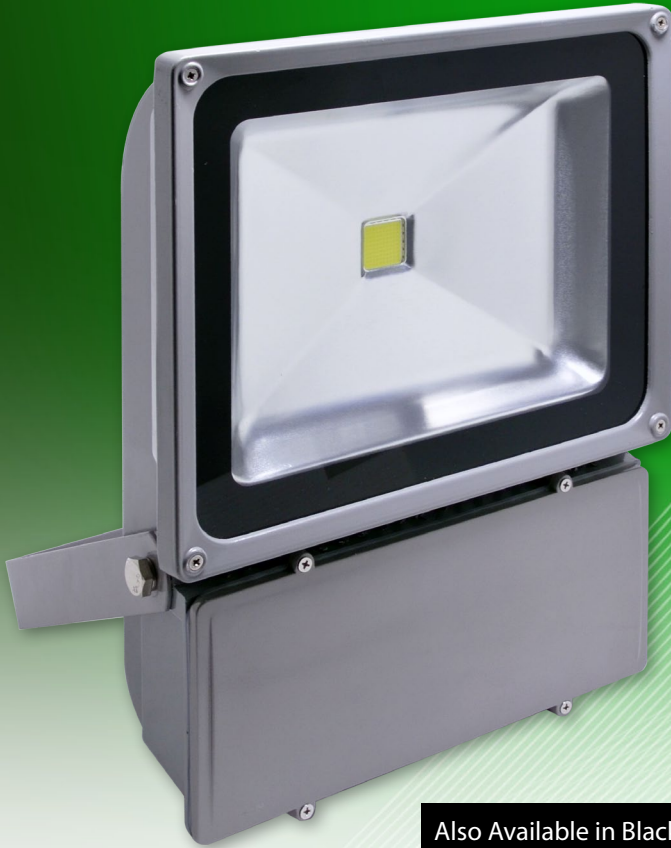
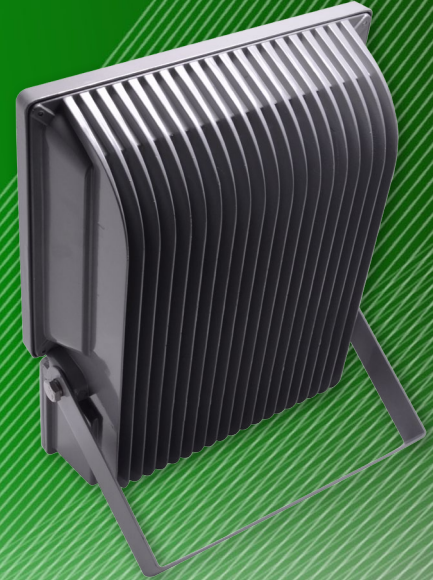


100W LED Flood Light (5000lm)

Built For Domestic Use



Also Available in Black Chassis



Overview

Operating on 100 watts, this LED Flood Light uses 50-70% less power than traditional HID lights for the same light output. These lights are ideal for outdoor use in residential areas.

Key Benefits

LED lights reach maximum intensity immediately after being switched on. They do not require time to warm up. In the event of a momentary loss of power, HID lamps can take up to 20 minutes to turn back on.

The fixture is completely free of hazardous materials including mercury and lead and boasts an annual energy saving that equates to over two metric tons of CO₂ saved per fixture per year!

- Use up to 70% less power than HID lamps.
- LED flood lights has greater lifespan versus halogens.
- Cool light reduces the ambient temperature.
- Energy saving and environmentally friendly.
- No warm up or cool down periods.
- Resistant to shock and vibration.
- No audible buzzing sounds or light flickering.
- No UV or IR radiation.
- Reduce carbon emissions.

Specifications

	OPTICAL
System Power Consumption	100W
LED Output Power	5000lm
Colour Temperatures	3000K / 4500K / 6500K
Colour Rendering Index	>75
Rated LED Lifespan	35,000 Hours
Beam Angle	120°
	ELECTRICAL
Input Voltage	85V-265V AC / 50Hz - 60Hz
Lamp Efficiency	>90%
Power Factor	>0.9
	GENERAL
Dimensions	L290 x W360 x D260 (mm)
Ingress Protection Rating	IP65

Your Local Dealer