



www.watchguardalarms.com.au

MODEL: DVR4ENTPACK2

Professional Surveillance Pack

Digital Video Recorder with 4 Security Cameras

'USER MANUAL'



DVR

- Advanced MPEG4 Video Compression Technology
- Multiplex Operation
- Long Recording Duration
- Intelligent Video Motion Detection Recording
- Remote Network Surveillance & Backup Functions
- Easy to operate like a VCR
- System Auto recovery after power loss (blackout)

2 x Cameras – 30m night-vision range

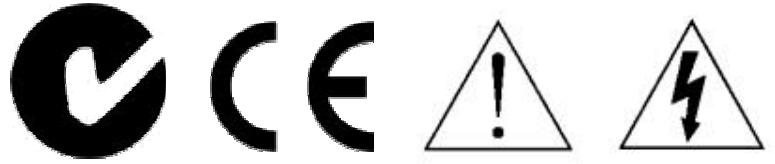
- High Quality CCD Image sensor
- 24 x IR LED's
- 420 TVL Resolution, 520 x 582 Pixels

2 x Cameras – 15m night-vision range

- High Quality CCD Image sensor
- 12 x IR LED's
- 420 TVL Resolution, 520 x 582 Pixels

Note: The latest version of this manual can be found at:
<http://www.watchguardalarms.com.au>

Safety Warning



CAUTION

To reduce the risk of electric shock, do not expose this machine to rain or moisture.

Only operate this machine from the type of power source indicated on the label.

RhinoCo Technology shall not be liable for any damages arising out of any improper use, even if we have been advised of the possibility of such damages.

The lightning flash with arrowhead symbol, within an equilateral triangle, is intended to alert the user to the presence of uninsulated “dangerous voltage” within the product’s enclosure that may be of sufficient magnitude to constitute a risk of electric shock to persons.

This exclamation point within an equilateral triangle is intended to alert the user to the presence of important operating and maintenance (servicing) instructions in the literature accompanying the appliance.

C-Tick & CE Mark

This apparatus is manufactured to comply with the radio interference requirements.

RhinoCo Technology does not warrant that this manual will be uninterrupted or error-free. We reserve the right to revise or remove any content in this manual at any time.

THIS PRODUCT IS LICENSED UNDER THE MPEG-4 VISUAL PATENT PORTFOLIO LICENSE FOR THE PERSONAL AND NON-COMMERCIAL USE OF A CONSUMER FOR (i) ENCODING VIDEO IN COMPLIANCE WITH THE MPEG-4 VISUAL STANDARD (“MPEG-4 VIDEO”) AND/OR (ii) DECODING MPEG-4 VIDEO THAT WAS ENCODED BY A CONSUMER ENGAGED IN A PERSONAL AND NON-COMMERCIAL ACTIVITY AND/OR WAS OBTAINED FROM A VIDEO PROVIDER LICENSED BY MPEG LA TO PROVIDE MPEG-4 VIDEO. NO LICENSE IS GRANTED OR SHALL BE IMPLIED FOR ANY OTHER USE. ADDITIONAL INFORMATION INCLUDING THAT RELATING TO PROMOTIONAL INTERNAL AND COMMERCIAL USES AND LICENSING MAY BE OBTAINED FROM MPEG LA, LLC.

About This Manual

This user manual covers the menu system and network functionality of your digital video recorder (DVR). Please refer to the included *Quick Installation Guide* for information on:

- Package contents.
- Unpacking and connecting your DVR system.
- Setting the date and time.
- Starting and stopping recording.
- Searching and playing back recorded footage.
- Using the Keylock feature.
- Troubleshooting

Table of Contents

Safety Warning	2
About This Manual	2
Table of Contents	3
Menu System	4
Navigating the Menu	4
Menu Tree	5
Record	6
Timer	7
Date	7
Advance	8
Advance > Camera	8
Advance > Detection	8
Advance > Detection > Detection Setup	8
Advance > Detection > Detection Timer	10
Advance > Display	10
Advance > Alert	11
Advance > Remote	12
Advance > System	13
Advance > Network	14
Advance > HDD Info	14
Advance > Event Log	14
Section 2 – Network Operation	15
Introduction	15
Default DVR Network settings	15
Connecting via AP Software	15
Playback Operation	16
Playback Operation	17
System Config > Network > Dynamic DNS	19
System Config > Network > Mail	19
System Config > Network > FTP	20
System Config > DVR	20
System Config > Device	20
System Config > Detection	21
System Config > DVR > Network Backup	22
System Config > DVR > Search List	23
System Config > DVR > Timer Record	23
System Config > DVR > Record Setting	24
System Config > Alarm	25
System Config > General	25
System Config > General > Account	26
System Config > General > Online User Info	27
System Config > General > File Path	27
Troubleshooting	28
Connecting via Internet Explorer	29
RS-232 Protocol	32
Hard Drive Installation	33
Section 3 - Remote Setup Guide	34
Introduction	34
General Connection Information	34
Configuration of a D-link DSL504T (v2) for use with the DVR	34
Initial Router Setup	34
Dynamic DNS	34
DVR IP Address	35
LAN Clients	35
Port Forwarding	36
Connecting Remotely	36

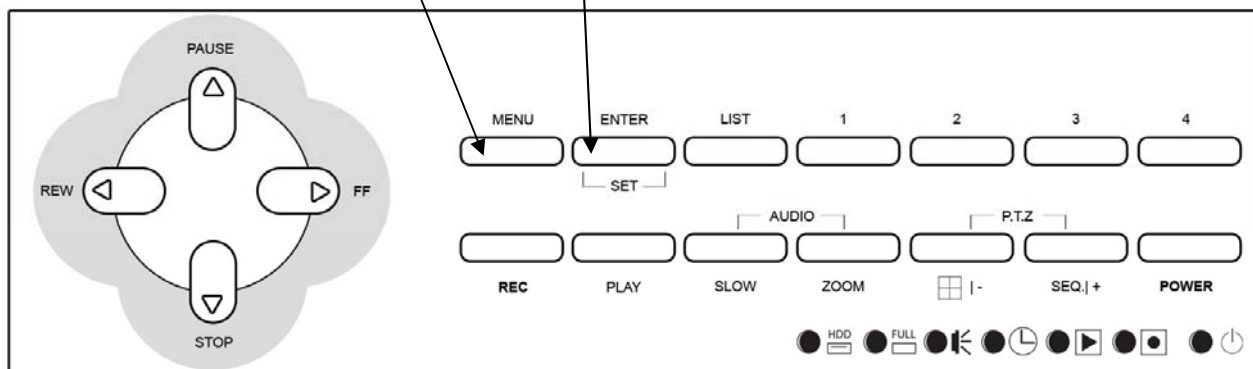
Menu System

Navigating the Menu

The following buttons are used to navigate through the menu.

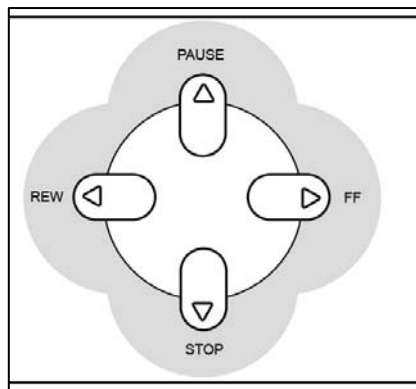
Press "MENU" button to enter the
(OSD) On Screen Display menu list

The default admin password is 0000.
Enter the default password by pressing
"ENTER" 4 times

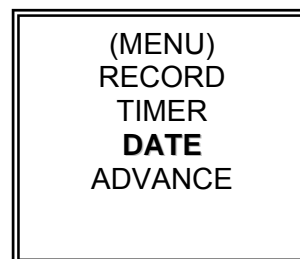


UP=▲,

LEFT=◀,



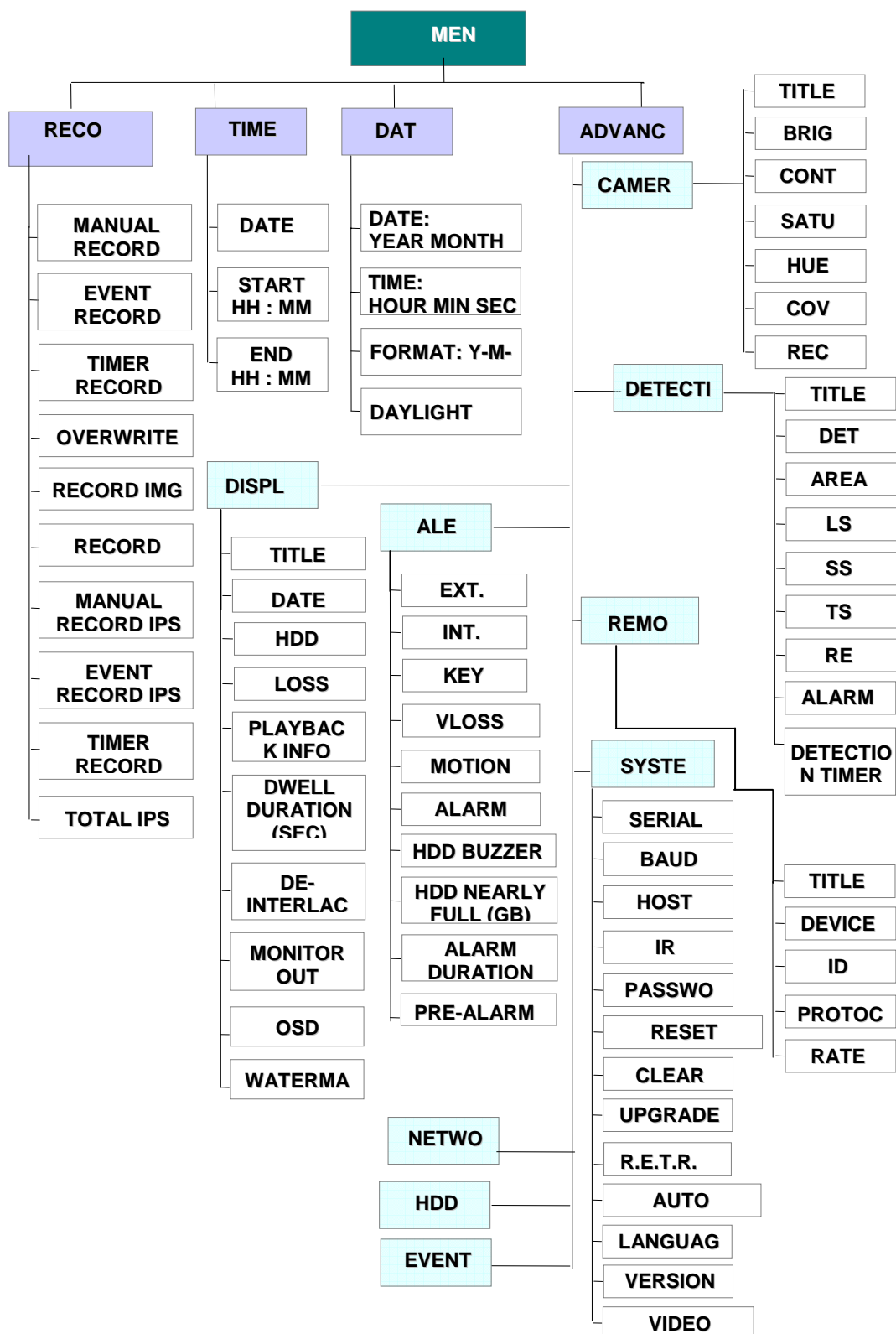
RIGHT=▶



DOWN=▼,

Menu Tree

The menu system for the DVR can be reached by pressing the **MENU** button. The menu system has the following structure.



RECORD
MANUAL RECORD ENABLE
EVENT RECORD ENABLE
TIMER RECORD ENABLE
OVERWRITE
RECORD IMG SIZE
RECORD QUALITY
MANUAL RECORD IPS
EVENT RECORD IPS
TIMER RECORD IPS
TOTAL IPS SHARE

Manual Record Enable

Indicates whether the DVR has been manually set to record. If you have pressed the **REC** button on the front panel to start recording, then this will say **YES**.

You can start or stop recording manually, by changing this value to either **YES** or **NO**.

Event Record Enable

Sets whether the DVR should start recording when motion is detected or the external alarm is triggered.

For more information on motion detection and external alarms see *Advance > Detection*

Timer Record Enable

Sets whether the DVR should use the timer schedule to start and stop recording.

Overwrite

Sets whether the DVR should automatically overwrite the oldest footage when the hard drive becomes full.

Record IMG Size

Sets the resolution the DVR will record in. Recording in **FRAME** mode forces the DVR into MJPEG and will use approximately 5 times as much space as **CIF** mode.

FRAME (MJPEG)	704 x 576 pixels
CIF (MPEG4)	352 x 288 pixels

Record Quality

Sets the quality to record in. It is best to experiment with these settings to find a quality level that suits you. There are four options available – **BEST**, **HIGH**, **NORMAL** and **BASIC**.

Note: The images per second (IPS) settings are global. This means that if you have the IPS set to 100, each camera will record at 25 IPS. Likewise, a setting of 12 would have each camera record at 3 IPS.

Manual Record IPS

Sets how many IPS the DVR will record in when manually set to record by the user.

Event Record IPS

Sets how many IPS the DVR will record in when it detects motion or is triggered by an external alarm.

Timer Record IPS

Sets how many IPS the DVR will record in when it is recording off the timer schedule.

Total IPS Share

This option does not apply to this model DVR.

Timer

RECORD		
DATE	START	END
OFF	00 : 00 -	00 : 00
DAILY	08 : 00 -	18 : 00
SUN	06 : 00 -	23 : 00
MON-FRI	00 : 00 -	00 : 00
OFF	00 : 00 -	00 : 00
OFF	00 : 00 -	00 : 00
OFF	00 : 00 -	00 : 00

Using the Timer menu you can setup multiple recording schedules. The **DATE** specifies what days the schedule applies. The **START** and **END** times indicate (in 24 hour format) when the DVR will record.

Note: The DVR will only use the timer schedule if the *Record > Timer Record Enable* option is set to **YES**.

Date

DATE		
DATE	2006-MAY-12	16:30:00
FORMAT	Y-M-D	
DAYLIGHT SAVING	ON	

The Date menu is used to set the date, time and daylight savings settings for the DVR.

Note: Never change the date and time when the DVR is recording - stop recording before hand.

The daylight savings option will tell the DVR to adjust the time during a certain date range.

DAYLIGHT SAVING		
START	4TH-SUN-MAR	01: 00: 00
END	4TH-SUN-OCT	01: 00: 00
ADJUST	01 : 00	

Example - In the image above: During the daylight savings time period (starting on the 4th Sunday of March and ending on the 4th Sunday of October), the DVR time will run one hour ahead.

Advance

ADVANCE
CAMERA DETECTION DISPLAY ALERT REMOTE SYSTEM NETWORK HDD INFO EVENT LOG

Note: The Advance menu of the DVR is enthusiasts or experts only. Changing settings in this section of the menu can drastically alter the performance and functionality of the DVR. It is recommended you do not change anything in this section unless you know what you are doing.

Advance > Camera

Title

This option allows you to create a name for the camera.

Brightness / Contrast / Saturation / Hue

This option allows you to modify these four values for the camera.

Covert

This option allows you to hide a camera from display. It will still record, but will only show during playback.

Record

This option allows you to configure whether to record this camera or leave it as display only.

Advance > Detection

DETECTION
DETECTION SETUP DETECTION TIMER

Advance > Detection > Detection Setup

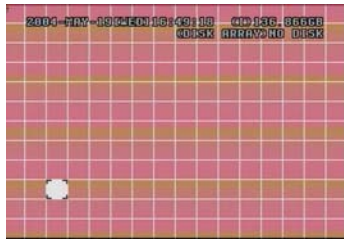
DETECTION						
TITLE	DET	AREA	LS	SS	TS	RE ALARM
01	ON	SETUP 07		03	02	10 OFF
02	ON	SETUP 07		03	02	10 LOW
03	ON	SETUP 07		03	02	10 HIGH
04	ON	SETUP 07		03	02	10 OFF

Detection

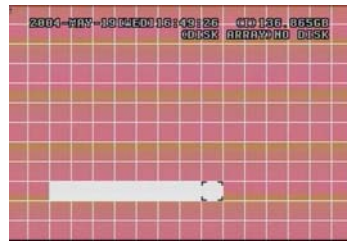
This option enables and disables motion detection for this individual camera.

Area

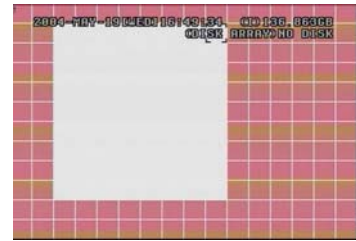
Press ENTER to setup area masking for this camera.



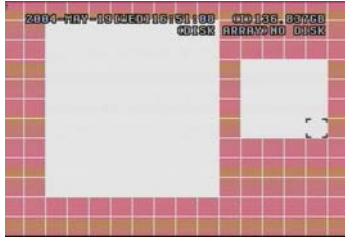
Press "ENTER" to confirm the start area



Press ◀ or ▶ to choose the width of the area



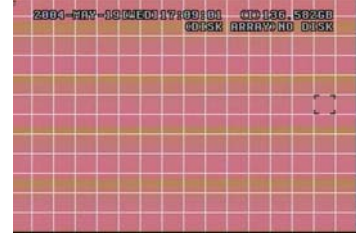
Press ▲ or ▼ to choose the height of the area, and press "ENTER" again to confirm.



Multi-detection areas



Press "—" to set the whole area under detection



Press "+" to set the whole undetected

LS

The sensitivity of comparing two different images. The smaller the value is, the higher sensitivity for motion detection. The highest sensitivity setting is 00 and the lowest sensitivity setting is 15. The default value is 07.

SS

The sensitivity regarding the size of the triggered object on the screen (the number of motion detection grids). The smaller the value, the higher sensitivity for motion detection. The highest sensitivity setting is 00 and the lowest sensitivity setting is 15. The default setting is 03.

Note: The default setting of Spatial Sensitivity is 03, which means once a object is detected more than 3 grids, the system will get triggered. So the value of Spatial Sensitivity must be less than the number of grids that you set up for the motion detection area.

TS

The sensitivity regarding how long the object gets triggered. The smaller the value, the higher motion detection sensitivity will be. The highest sensitivity setting is 00 and the lowest sensitivity setting is 15. The default setting is 02.

RE

The value of RE is a reference for detection. The default value is 10, which means DVR will compare 10 continuous images at one time according to the sensitivity of LS, SS, TS simultaneously. The bigger the value, the higher sensitivity for motion detection. The highest sensitivity is 61.

Alarm

Select LOW / HIGH for the alarm. The default alarm value is OFF.

Advance > Detection > Detection Timer

DETECTION TIMER		
DATE	START	END
OFF	00 : 00 -	00 : 00
DAILY	08 : 00 -	18 : 00
SUN	06 : 00 -	23 : 00
MON-FRI	00 : 00 -	00 : 00
OFF	00 : 00 -	00 : 00
OFF	00 : 00 -	00 : 00
OFF	00 : 00 -	00 : 00

The DVR will only check for alarm inputs or motion when in a scheduled time period.

Advance > Display

DISPLAY	
TITLE DISPLAY	ON
DATE DISPLAY	ON
HDD INFO	ON
LOSS SCREEN	BLUE
PLAYBACK INFO	NORMAL
DWELL DURATION (SEC)	2
DE-INTERLACE	ON
MONITOR OUT	MAIN
OSD	SETUP
WATERMARK	ON

Title Display / Date Display

Configures whether or not to show camera title and date information on screen.

HDD Info

This option configures whether or not to show the current hard drive capacity on screen.

Loss Screen

Configures whether to show a **BLUE** or **BLACK** screen when video loss is detected.

Playback Info

This option configures whether to show playback info in the bottom left (**NORMAL**) or center (**CENTER**).

Dwell Duration

This option configures how long the DVR should 'dwell' on each camera when it is in sequencing mode.

De-Interlace

This option configures whether the monitor output is de-interlaced.

Monitor Out

This DVR does not support multiple output monitors. Do not change this value.

OSD

This sub menu lets you customise the colour values of the on-screen display.

Watermark

This option places a security watermark in stored video. It is recommended that you leave this option turned on.

ALERT	
EXT. ALERT	ON
INT. BUZZER	ON
KEY BUZZER	ON
VLOSS BUZZER	ON
MOTION BUZZER	ON
ALARM BUZZER	ON
HDD BUZZER	ON
HDD NEARLY FULL (GB)	05
ALARM DURATION (SEC)	05
PRE-ALARM	OFF

External Alert

Configures whether to sound the buzzer when the external alarm is triggered.

Internal Buzzer

Sets the sound of the internal buzzer.

Key Buzzer

Configures whether to sound the buzzer when pressing buttons on the front panel.

Video Loss Buzzer

Configures whether to sound the buzzer when video loss is detected.

Motion Buzzer

Configures whether to sound the buzzer when motion is detected.

Alarm Buzzer

Configures whether to sound the buzzer when the internal alarm is triggered.

HDD Buzzer

Configures whether to sound the buzzer when the hard drive is full.

HDD Nearly Full (GB)

Sets the amount of remaining hard drive capacity required before the alarm will sound.

Alarm Duration (SEC)

Sets the amount of time to record once an alarm event has been detected.

Pre-Alarm

Sets whether the DVR should record events before an alarm trigger occurs.

Advance > Remote

REMOTE				
TITLE	DEVICE	ID	PROTOCOL	RATE
01	PTZ	001	P - D	02400
02	CAMERA	002	NORMAL	02400
03	CAMERA	003	NORMAL	02400
04	CAMERA	004	NORMAL	02400

Note: This section of the menu is for configuring the DVR to send PTZ commands to cameras. Please note that the cameras supplied with this DVR do not support this feature.

If you wish to use a PTZ camera with this DVR, the camera must support the Pelco-D protocol.

For more information on setting up a PTZ camera, refer to your cameras manual.

Device

Configures whether the camera attached to this channel is a **NORMAL** or **PTZ** camera.

ID

Configures the PTZ ID of the camera. Range of **1 ~ 255**.

Protocol

Configures the protocol for the camera as either **NORMAL** or Pelco-D **P-D**.

Rate

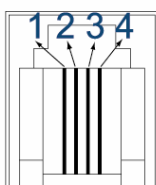
Configures the baud rate used by the camera as either **2400, 4800, 9600, 19200, 57600**.

Connection Guide

Connect "RS485-A" line (brown colour) to RS485-A port on the rear panel of the DVR.

Connect "RS485-B" line (orange colour) to RS485-B port on the rear panel of the DVR.

RS485 Port on DVR Rear Panel



2: RS485-B

1: RS485-A

Advance > System

SYSTEM	
SERIAL TYPE	RS - 485
BAUD RATE	02400
HOST ID	003
PASSWORD	SETUP
RESET DEFAULT	RESET
CLEAR HDD	MASTER
AUTO KEYLOCK	NEVER
LANGUAGE	ENGLISH
VERSION	1088-10-K2-04-AA-11
VIDEO FORMAT	NTSC

Serial Type

Switches the serial type of the DVR between **RS-232** and **RS-485**.

Baud Rate

Switches the baud rate of the DVR between **2400**, **9600**, **19200** and **57600**.

Host ID

Sets the ID of the DVR. Range of **1 ~ 255**.

Password

Modifies the **admin** and **guest** passwords for the machine.

Reset Default

Resets the system to the factory default setting.

Note: Your DVR has been pre-configured to record for 4 weeks. This is not the factory default setting.

Clear HDD

Erases all recorded footage off the hard drive.

Auto Keylock

Configures the DVR to automatically turn the keylock on after **10**, **30** or **60** seconds. Set to **NEVER** to disable this feature.

Language

Configures the language of the on-screen display.

Version

The current firmware version of the DVR.

Video Format

This option switches the video format between **PAL** and **NTSC**. Australia uses the **PAL** system.

Advance > Network

Note: If you do not have a thorough understanding of TCP / IP technology it is recommended that you employ the services of a network technician to help you.

For more information on setting up the remote connection component, please see Section 3 of this manual.

NETWORK	
NETWORK TYPE	<u>STATIC</u>
DNS	<u>203 . 021 . 020 . 020</u>
PORT	<u>0080</u>

Network Type

Configures whether the DVR uses a **Static IP**, **DHCP** or **PPPoE** network connection.

After choosing which type of connection to use, press the **ENTER** button to enter the relevant information for each type.

DNS

Set the DNS server for the DVR.

Port

Set the Port that the DVR should run on. Default is **80**.

Advance > HDD Info

This section of the menu shows you the remaining capacity of the internal hard drive.

HDD INFO			
HDD NUM	HDD SIZE	HDD NUM	HDD SIZE
MASTER-1	080.000	SLAVE-1	NO HDD
MASTER-2	NO HDD	SLAVE-2	NO HDD
EXT001	NO HDD	EXT 002	NO HDD
EXT003	NO HDD	EXT 004	NO HDD
EXT005	NO HDD	EXT 006	NO HDD
EXT007	NO HDD	EXT 008	NO HDD
EXT009	NO HDD	EXT 010	NO HDD
EXT011	NO HDD	EXT 012	NO HDD

Advance > Event Log

This section of the menu allows you to view lists of system events, such as video loss, network access, etc.

EVENT LOG	
VLOSS	LIST
NET	LIST
SYSTEM	LOG
OTHERS	
CLEAR	ALL

Section 2 – Network Operation

Introduction

There are two ways you can remotely connect to your DVR.

The first method is to connect using the AP software. This must be installed on your computer.

The second method is to connect using Internet Explorer.

Either method requires that Windows networking has been set up correctly for the DVR prior to connection. Refer to the Microsoft Windows documentation or contact an IT Professional for more information.

Default DVR Network settings

Username: admin
Password: admin
IP Address: 192.168.0.1
Port: 80

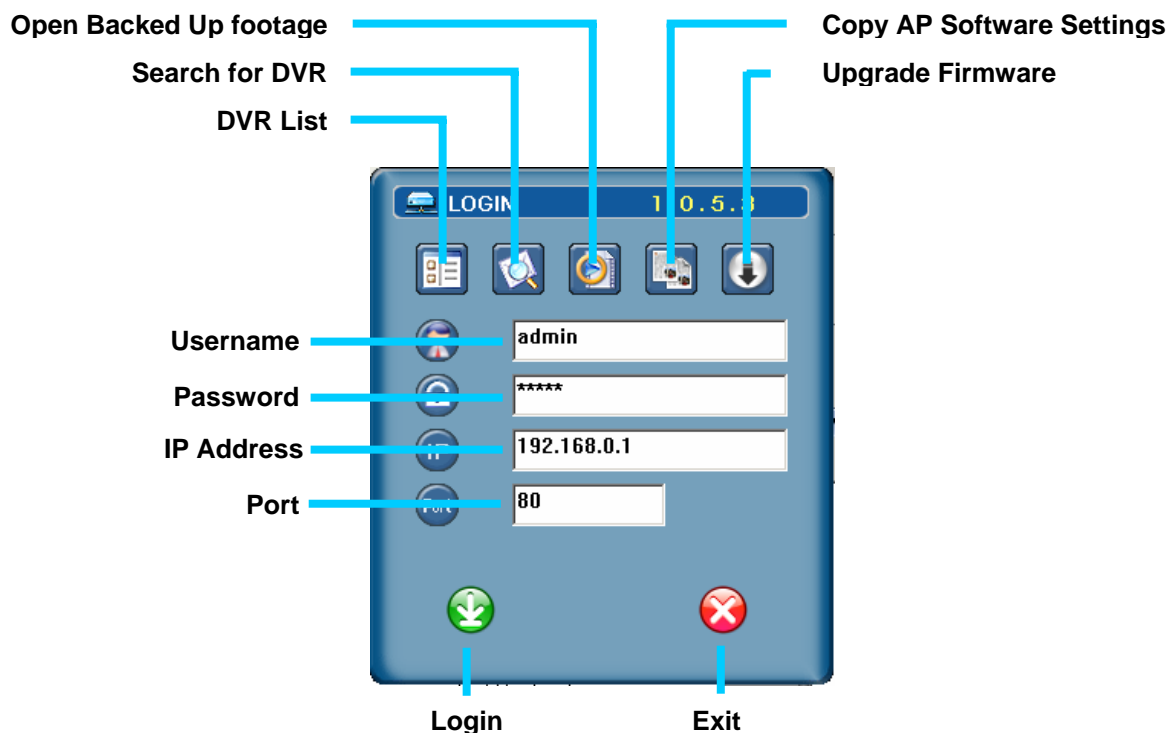
Connecting via AP Software

Install AP Software

You can obtain the AP software from the supplied CD-ROM or by browsing to <http://www.watchguardalarms.com.au/dvr4entpack.php> and following the directions on the page.

Note: Refer to page 14 on information regarding checking / altering the DVR's network settings.

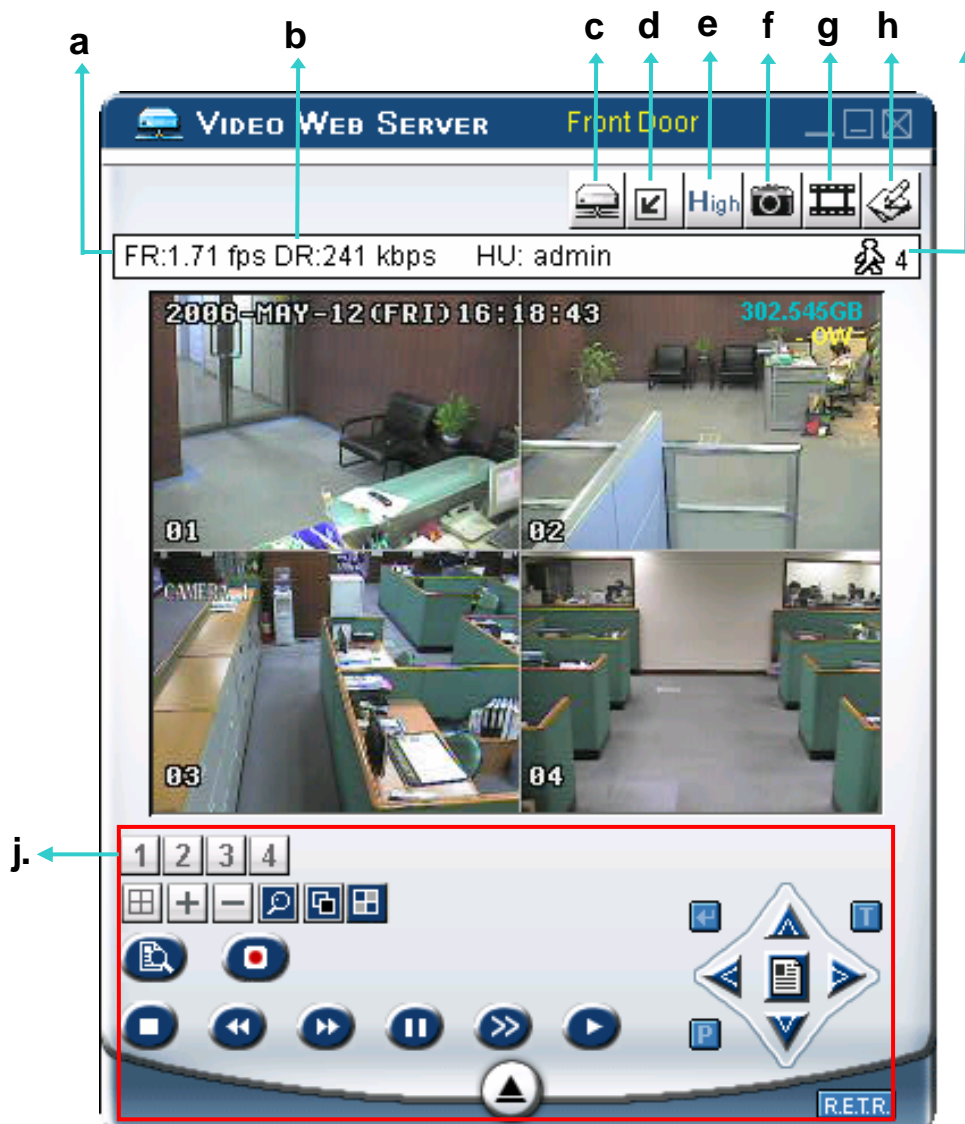
AP Software – Login Screen



AP Software – Camera Screen

The AP software works by emulating the buttons on the front panel of the DVR. Anything you can do on the DVR can also be done in the AP software.

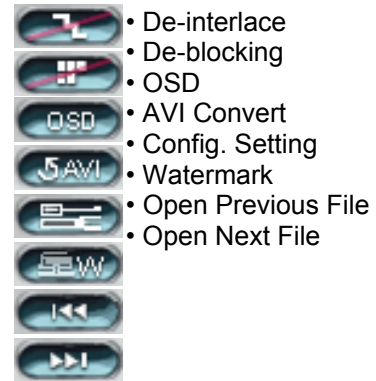
- a) Frame Rate
- b) Data Rate (bandwidth being used)
- c) Connect / Disconnect from DVR
- d) Switch display resolution between **320 x 276** and **640 x 552**.
- e) Image Quality (High, Medium, Low)
- f) Take a Snapshot. Saved in the location set in *System Config > General > File Path > Snapshot Path*.
- g) Start and stop recording. Saved in the location set in *System Config > General > File Path > Record Path*. This will record what you see on screen to your own computer.
- h) Open the System Config menu.
- i) The number of users connected to the DVR.
- j) These buttons all emulate the front panel of the DVR. Please refer to the quick installation guide and the menu section above. Hover your mouse cursor over the button to get a description of what it does.



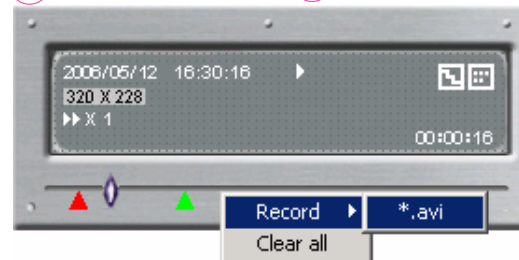
Playback Operation



One click to activate



- **Playback Information :**
Display information such as "Date", "Time", "Resolution", "Rewind / Forward Speed", "Status" and "Functions", etc.
- **Time Progress Bar :**
Show the playback progress status.
- **Functions :**



To snap a video clip, right click the mouse to make a starting point (red) and click one more time to make a ending point. Then right click to convert to the AVI format.

- **De-interlace:** Reduce the vibration of the paused picture.
- **De-blocking:** Reduce the video mosaic phenomenon.
- **OSD:** Display the OSD of the AP playback window.
- **AVI conversion:** Convert the entire recorded file to the AVI format.
- **Config. Setting:** Enter the AP config. setting box, and set the file path, text color and text color of progress status.
 - * Mute: Play back the video only (without audio).
 - * AV Sync.: Play back with the audio and video synchronously.
- **Watermark:** Proof the authenticity of the backup video.
- **Open Previous File:** Open the previous backup video.
- **Open Next File:** Open the next backup video.

- **Playback Control Buttons :**
Play / Stop / Pause / Fast Rewind / Fast Forward
- **Snapshot :**
Press this button to take a snapshot of the current image which will be saved in the designated destination.
- **Close the Player**


Note:

- When users pause the playback picture, press "⏮" button to go to the previous frame, or press "⏭" button to go to the next frame.
- In the playback mode of the software AP, users could press "EW" button to check the authenticity of the **BACKUP VIDEO**. If the **BACKUP VIDEO** had been altered, the video image will turn to light red and the playback will be paused.

Note:

- When users use remote AP recording, the watermark function is not supported.

System Config > Network

Press the  button to enter the System Config.

The network configuration allows the DVR to connect to an Ethernet or dial-up network.

❑ **Static IP:**

Enter the “server IP”, “gateway”, “net mask” and “web port”, and then press “APPLY” to confirm.

❑ **PPPOE:**

Enter the “username” and “password” provided by your ISP (Internet Service Provider). Then, go to “DDNS” and finish DDNS settings before pressing “APPLY”.

❑ **DHCP:**

This DHCP function needs to be supported by a router or a cable modem network with DHCP services. Choose the DHCP IP type. Then, go to “DDNS” and finish DDNS settings before pressing “APPLY”.

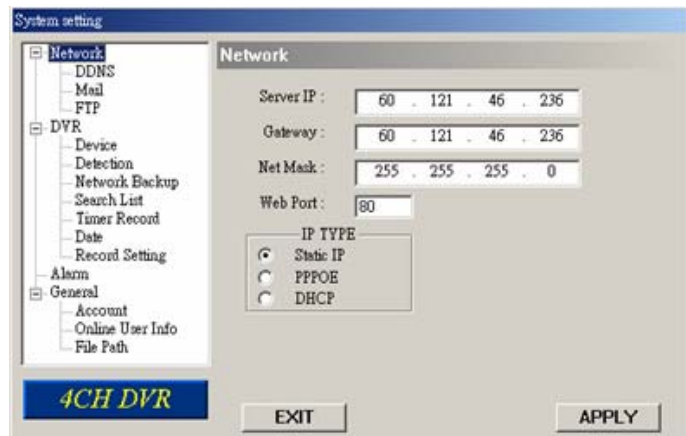
Note:

❑ PPPOE and DHCP network connection types are required to apply DDNS services **FIRST** to get a “Hostname” to correspond to the dynamic IP address

❑ Some router brands may need to restart the DVR to get the IP address.

❑ **Web Port:**

The DVR can be viewed over the network with the software AP or a web browser. Typically, the TCP port used by HTTP is 80. However in some cases, it is better to change this port number for added flexibility or security. The valid number ranges from 1 to 9999.



System setting

Network

Server IP : 60 . 121 . 46 . 236

Gateway : 60 . 121 . 46 . 236

Net Mask : 255 . 255 . 255 . 0

Web Port : 80

IP TYPE

☒ Static IP

☐ PPPOE

☐ DHCP

4CH DVR

EXIT

APPLY



System setting

Network

Server IP : 60 . 121 . 46 . 236

Gateway : 60 . 121 . 46 . 236

Net Mask : 255 . 255 . 255 . 0

Web Port : 80

IP TYPE

☐ Static IP

☒ PPPOE

☐ DHCP

PPPOE

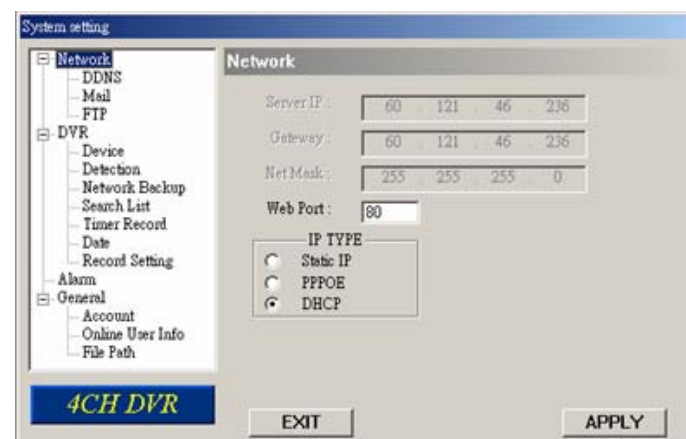
User Name : cathy

Password : *****

4CH DVR

EXIT

APPLY



System setting

Network

Server IP : 60 . 121 . 46 . 236

Gateway : 60 . 121 . 46 . 236

Net Mask : 255 . 255 . 255 . 0

Web Port : 80

IP TYPE

☐ Static IP

☐ PPPOE

☒ DHCP

4CH DVR

EXIT

APPLY

- ❑ DDNS is a service for transforming the dynamic IP corresponding to a specific "Hostname".
- ❑ **DDNS Apply:**
Go to a website which provides free DDNS services and apply a "Hostname". See the example below.
- ❑ **Enable the DDNS function:**
User Name: Enter your DDNS user name.
Password: Enter your DDNS password.
Domain: Enter your host name.
System Name: Choose the DDNS system name you use from the drop-down list.

System setting

Network

- DDNS
- Mail
- FTP

DVR

- Device
- Detection
- Network Backup
- Search List
- Timer Record
- Date
- Record Setting

Alarm

- General
- Account
- Online User Info
- File Path

4CH DVR

DDNS

DNS: 168 . 95 . 1 . 1 ☐ AUTO

DDNS: ☒ Enable ☐ Disable

User Name: hostname

Password: *****

Domain: hostname.dyndns.org

System Name: dyndns

EXIT APPLY

After setting, press "APPLY" to confirm.

Note: If the dial-up static IP is provided by your ISP, simply choose "Enable" and do not need to enter the information described above.

- ❑ **Auto:**
When using DHCP network connection, the "AUTO" check box will appear on this window. The system will automatically get DNS information from the Internet if this check box is selected.

System Config > Network > Mail

- ❑ When the recording is triggered by an alarm or a motion, a video copy file can be captured. The DVR will send an e-mail notification to the assigned recipients (up to 5 recipients).
*****Note***:**
To activate the e-mail notification function, please enable the function of e-mail notification in the "Alarm" setting first (page 26).
- ❑ Add the recipients' email accounts in "Mail Account" column.

System setting

Network

- DDNS
- Mail
- FTP

DVR

- Device
- Detection
- Network Backup
- Search List
- Timer Record
- Date
- Record Setting

Alarm

- General
- Account
- Online User Info
- File Path

4CH DVR

Mail

Server: 211.76.85.99

Mail from: catherine@tech.com.t

Modify alarm email address

ADD DELETE EDIT

Verify Password

Verify: ☒ Yes ☐ No

User: catherine.lee

Password: *****

Mail Account

catherine.lee@ya.com

EXIT APPLY

For detailed information (SMTP server, username and password), please get from your e-mail system supplier.

- ❑ Please type the entire email address in the "Mail from" column to ensure emails will not be blocked by SMTP.
- ❑ In some cases, mail servers require to verify password. Please enter the "user name" and "password".
- ❑ After finishing the settings, press "APPLY" to confirm.

System Config > Network > FTP

- ❑ When the recording is triggered by an alarm or a motion, a video copy file can be captured. And the DVR will upload the captured images to the assigned FTP site.

- ❑ Enter the detailed FTP information.

Note.

To activate the FTP notification function, please enable the function of FTP notification in the “Alarm” setting first. (Refer to Pg 26).

- ❑ After setting, press “APPLY” to confirm.

System setting

FTP

UserName : catherine.lee

Password : *****

Port : 21

Server : 211.76.82.102

Directory : /catherine/alarm notification

EXIT APPLY

System Config > DVR

- ❑ Each camera channel can be adjusted independently.
- ❑ Select the desired camera channel. Press “Edit” to enter the setting box.
- ❑ **Title:**
Enter the camera channel name up to 6 characters.
- ❑ **Adjustment:**
Adjust the BR (brightness) / CT (contrast) / SU (saturation) / HU (hue) / REC (recording) of the camera.
- ❑ After setting, press “OK” and then press “APPLY” to confirm.

System setting

DVR-CAMERA

NO.	TITLE	BR	CT	SU	HU	COV	REC
1	01	110	128	128	128	NO	YES
2	02	110	128	128	128	NO	YES
3	03	110	128	128	128	NO	YES
4	04	110	128	128	128	NO	YES

Edit

4CH DVR EXIT APPLY

System Config > Device

- ❑ Select the desired channel of the installed external device.
Press “Edit” to enter the setting box.
- ❑ **Device Type:**
Choose either general camera or PTZ camera.
- ❑ **ID No. :**
Set the ID number (0 ~ 255) of the installed external PTZ device.
- ❑ **Protocol Type :**
Choose “NORMAL” protocol for our own brand camera.
Choose “P-D” protocol for PELCO-D protocol camera.
- ❑ **Baud Rate :**
Set the baud rate of each channel (2400, 4800, 9600, 19200, 38400, 57600, 115200).
- ❑ After setting, press “OK” and then press “APPLY” to confirm.

System setting

DVR-Device

NO.	DEVICE	ID	PROTOCOL	RATE
1	CAMERA	0	NORMAL	2400
2	CAMERA	0	NORMAL	2400
3	CAMERA	0	NORMAL	2400
4	PTZ	0	NORMAL	2400

Edit

4CH DVR EXIT APPLY

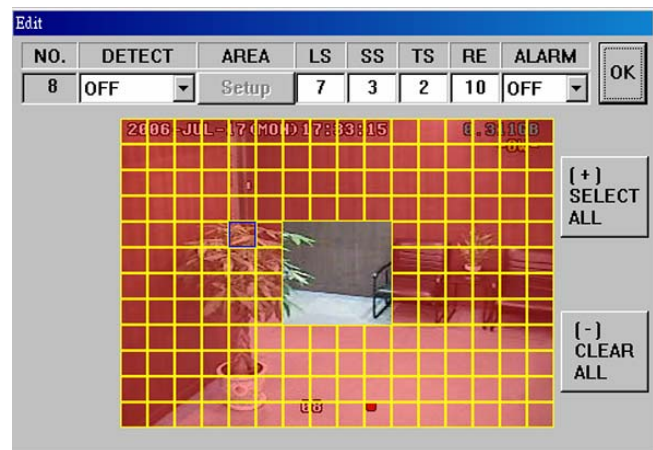
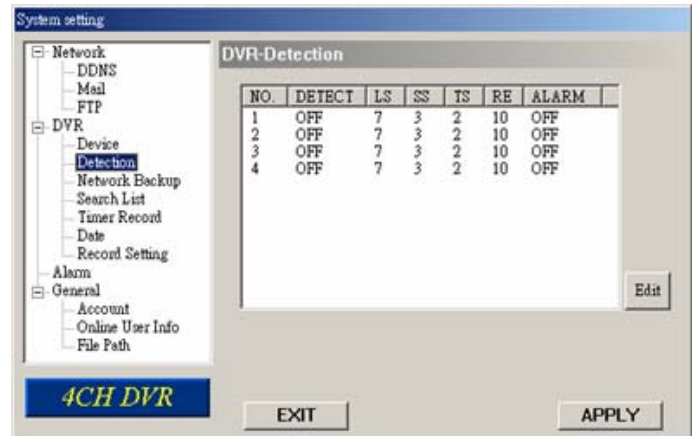
Edit

NO.	DEVICE	ID	PROTOCOL	RATE
1	PTZ	0	NORMAL	2400

OK

System Config > Detection

- ❑ Select the desired channel, and press “Edit” to enter the motion detection sensitivity and area setting box.
- ❑ **Motion Detection Sensitivity:**
Set the detection sensitivity in 4 different adjustable factors.
LS: The sensitivity of comparing two different images. The smaller the value, the higher sensitivity for the motion detection.
SS: The sensitivity towards the size of the triggered object on the screen (the number of motion detection grids). The smaller the value, the higher sensitivity for the motion detection.
TS: The sensitivity towards how long the object stays in the detection area to get triggered. The smaller the value, the higher sensitivity for the motion detection.
RE: The value of RE is a reference for the detection. The bigger the value, the higher sensitivity for the motion detection.
- ❑ **Alarm:**
Select LOW / HIGH for the alarm polarity.
- ❑ **Motion Detection Area:**
By clicking the area with your mouse, one can choose the motion area to be detected. The under detected area is transparent while the undetected area is in pink color.
 *Click “**Select All**” to activate the detection area as the full area.
 *Click “**Clear All**” to clean the previously selected detection area.
 After setting, press “OK” and then press “APPLY” to confirm.



System Config > DVR > Network Backup

You can backup the recorded data from the DVR directly to your PC and CD-R disk via the network. The backup file can be played directly in your PC via the supplied licensed AP, or via other media players (Ex: Windows Media Player or RealPlayer) after the file is converted to "AVI" format.

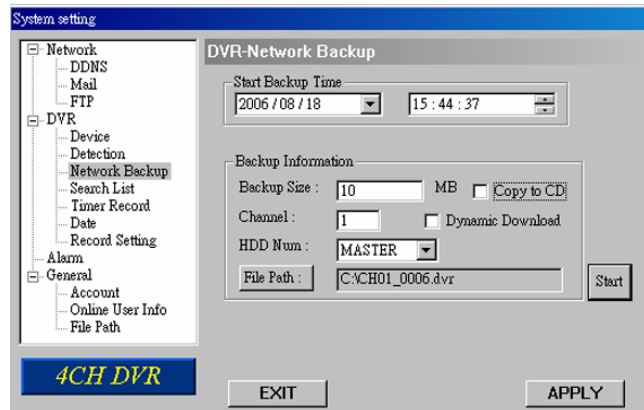
NOTE: For CD backup, please install "NERO" CD burning program to your PC first.

1. Enter the backup information:

If you want to make a backup to a CD, please check "Copy to CD".

If you want to view the backup image while the backup is processing, please check "Dynamic Download".

2. Press "Start" button to proceed the backup process.



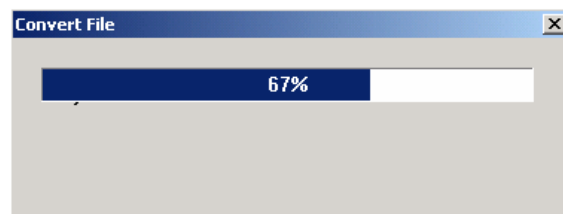
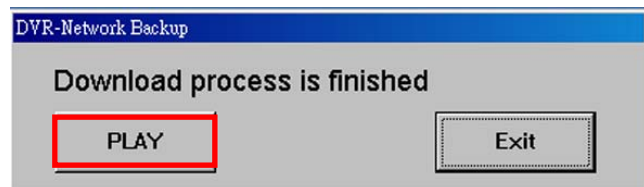
Making backup to your PC:

After pressing "Start", the backup will begin and a status bar will be displayed.

The "DVR Network Backup" pop-up window will show the message "Download process is finished" when the backup has succeeded.

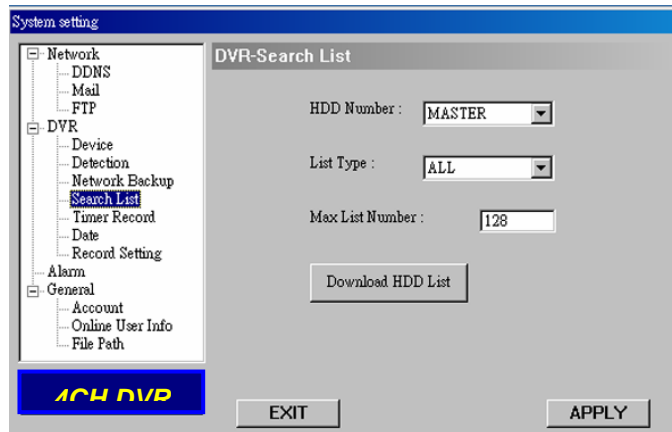
Press "PLAY" button to directly convert and play the file, or "Exit" to quit.

To convert the backup file later, please find the file in the designated file path and double-click it twice for AVI conversion and file playback.



System Config > DVR > Search List

- ❑ **HDD Number:**
Select one HDD (Master).
- ❑ **List Type:**
Select one list type (All/ Manual/ System/ Alarm/ Motion).
- ❑ **Max List Number:**
Maximum number of the list (128)
- ❑ **Download HDD List:**
Press this button to start downloading the list.

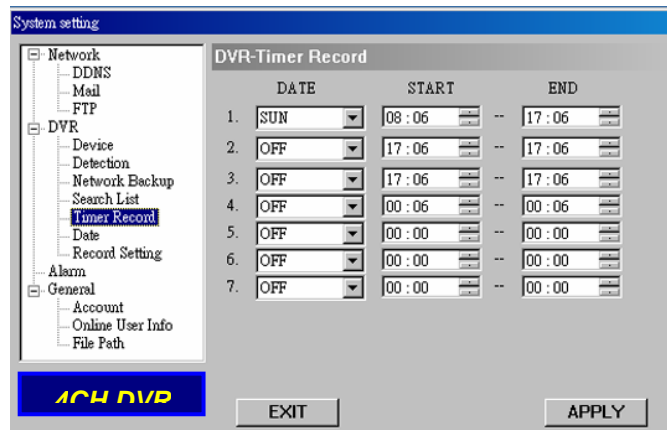


NO.	EVENT	CHANNEL	TIME
1	SYSTEM	ALL	2006-07-17 18:00:00
2	SYSTEM	ALL	2006-07-17 17:39:16
3	SYSTEM	ALL	2006-07-17 17:00:00
4	SYSTEM	ALL	2006-07-17 16:00:00
5	SYSTEM	ALL	2006-07-17 15:53:41
6	SYSTEM	ALL	2006-07-17 15:00:00
7	SYSTEM	ALL	2006-07-17 14:29:35
8	SYSTEM	ALL	2006-07-17 14:00:00
9	SYSTEM	ALL	2006-07-17 13:48:56
10	SYSTEM	ALL	2006-07-17 13:03:32
11	SYSTEM	ALL	2006-07-17 13:00:00
12	SYSTEM	ALL	2006-07-17 12:00:00
13	SYSTEM	ALL	2006-07-17 11:41:12
14	SYSTEM	ALL	2006-07-17 11:00:00
15	SYSTEM	ALL	2006-07-17 10:19:44
16	SYSTEM	ALL	2006-07-17 10:00:00

System Config > DVR > Timer Record

In this menu, you can schedule 7 different sets of time for recording.

- ❑ **DATE:**
Choose a day from "DATE" drop-down menu. The options are OFF, SUN, MON, TUE, WED, THU, FRI, SAT, MON-FRI, SAT-SUN and DAILY.
- ❑ **START:**
Enter the start time of timer recording.
- ❑ **END:**
Enter the end time of timer recording.



Press "APPLY" if the settings are correct; press "EXIT" to quit without saving.

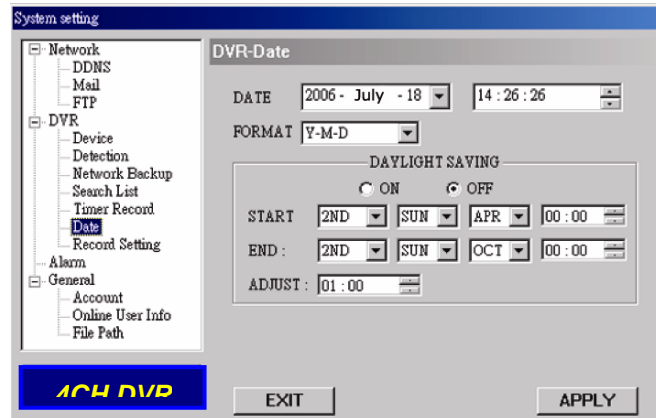
System Config > DVR > Date

In this menu, The DVR's date can be set. Please **DO NOT** change the date or time when the recording function is activated.

☐ **DATE:**

Choose the current date from "DATE" drop-down menu and enter the current time.

When you click the drop-down menu, a calendar as shown below shows for you to set the current date.



☐ **FORMAT:**

Choose the format for date display from the three options: Y-M-D, D-M-Y and M-D-Y.

☐ **DAYLIGHT SAVING:**

Specify whether to use daylight saving time (ON / OFF) and time period (START / END), and adjust the daylight saving time in hour (ADJUST).

System Config > DVR > Record Setting

In this menu, you can set DVR record settings.

☐ **MANUAL RECORD:**

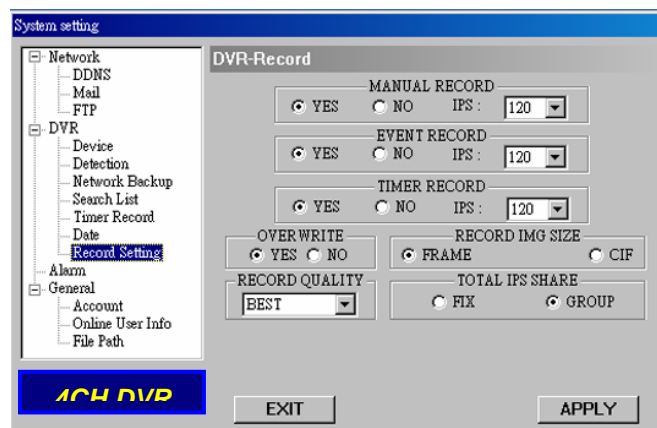
Specify whether to use manual recording (YES / ON) and set IPS number.

☐ **EVENT RECORD:**

Specify whether to use event recording (YES / ON) and set IPS number.

☐ **TIMER RECORD:**

Specify whether to use timer recording (YES / ON) and set IPS number.



☐ **OVER WRITE:**

Specify whether to overwrite the HDD capacity when the HDD is full (YES / NO).

☐ **RECORD IMG SIZE:**

Choose "FRAME" or "CIF". This selection will affect the available IPS options in the 3 recording modes described above.

☐ **RECORD QUALITY:**

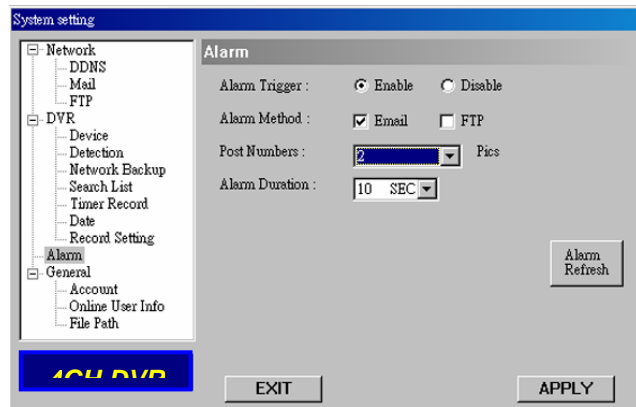
4 options are available from the drop-down menu: BEST, HIGH, NORMAL and BASIC.

☐ **TOTAL IPS SHARE:**

Choose the IPS share as FIX or GROUP.

System Config > Alarm

- ❑ **Alarm Trigger:**
Enable or disable Email and FTP notification function.
- ❑ **Alarm Method:**
Two notification methods
— Email and / or FTP.
- ❑ **Post Numbers:**
Set MJPEG pictures (1-10 pictures).
- ❑ **Alarm Duration:**
Set the duration time of motion trigger recording (5 SEC, 10 SEC, 20 SEC, 40 SEC).
- ❑ **Alarm Refresh:**
Clean the alarm message “ ” which is shown on the screen.



Note:

Email Notification:

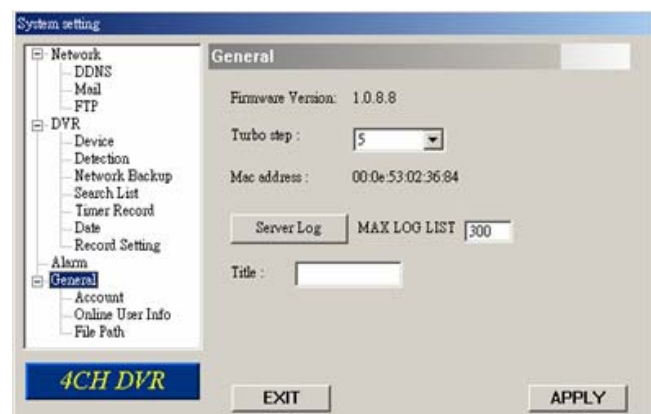
MJPEG pictures will be made at your designated space set in “File Path”, plus an e-mail contained with the MJPEG pictures (1-10 pictures) to be sent to the address which is set under “Mail”.

FTP Notification:

MJPEG pictures will be made at your designated space set in “File Path”, plus a FTP file contained with the MJPEG pictures (1-10 pictures) to be sent to the address which is set under “FTP”.

System Config > General

- ❑ Get the information of the DVR firmware version in this window.
- ❑ **Select “TURBO” Step (1 - 10)**
To speed up menu selection or the control of the PTZ camera under video web servers, users can activate “TURBO” function by clicking this button. Users are allowed to change the turbo steps from 1 to 10.
Ex: If the value of turbo step is “5”, it means that when users press one of the button up/down/left/right, one click is as clicking 5 times.
- ❑ **MAX LOG LIST:**
Set the maximum number of log list.
- ❑ **Server Log:**
Press “Server Log” button to enter the server log list window.
- ❑ **Title Title:**
Name the title which will be shown on the top of the AP live viewer (up to 15 characters).

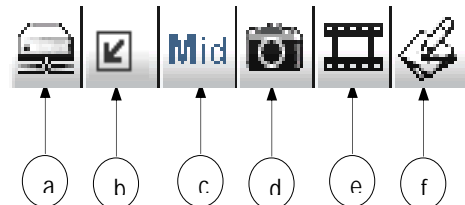
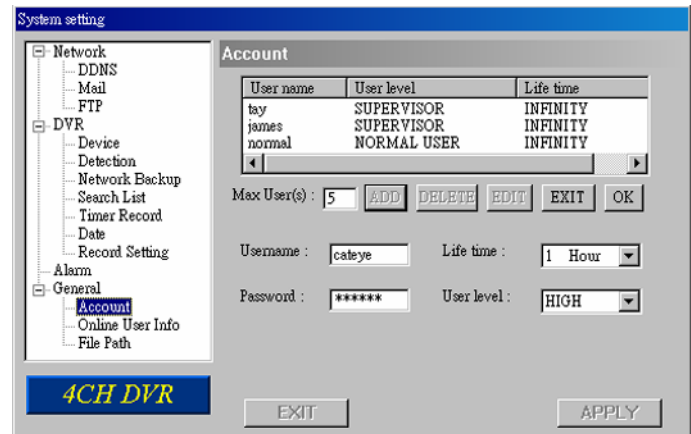
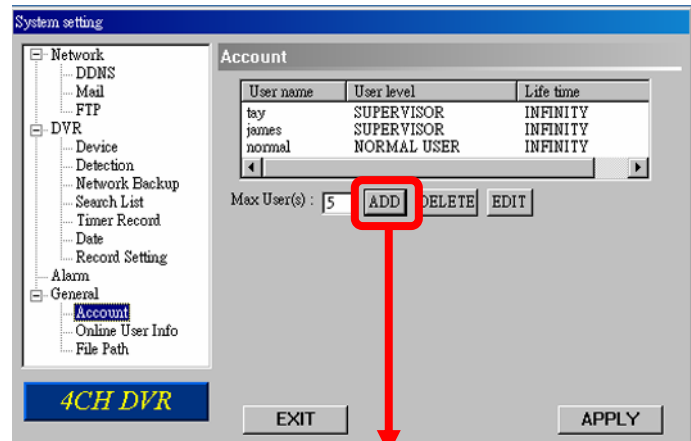


NO.	EVENT	TIME	CH
1	REMOTE LOGIN [a...	06-03-24 15:44:34	NO
2	REMOTE LOGIN [a...	06-03-24 15:43:54	NO
3	REMOTE LOGIN [a...	06-03-24 15:43:00	NO
4	REMOTE LOGIN [a...	06-03-24 15:42:02	NO
5	REMOTE LOGIN [a...	06-03-24 15:41:52	NO
6	REMOTE LOGIN [a...	06-03-24 15:41:37	NO
7	REMOTE LOGIN [a...	06-03-24 15:41:27	NO
8	REMOTE LOGIN [a...	06-03-24 15:40:41	NO
9	REMOTE LOGIN [a...	06-03-24 15:40:22	NO
10	REMOTE LOGIN [c...	06-03-24 15:22:06	NO
11	REMOTE LOGIN [a...	06-03-24 15:16:53	NO
12	REMOTE LOGIN [a...	06-03-24 15:16:41	NO
13	REMOTE LOGIN [c...	06-03-24 15:16:25	NO
14	REMOTE LOGIN [a...	06-03-24 15:16:09	NO
15	REMOTE LOGIN [a...	06-03-24 15:15:16	NO
16	REMOTE LOGIN [a...	06-03-24 15:14:58	NO
17	REMOTE LOGIN [a...	06-03-24 14:56:05	NO
18	REMOTE LOGIN [c...	06-03-24 14:32:07	NO

<input checked="" type="checkbox"/> POWER ON
<input checked="" type="checkbox"/> VIDEO LOSS
<input checked="" type="checkbox"/> REMOTE LOGIN
<input checked="" type="checkbox"/> HDD FULL
<input checked="" type="checkbox"/> KEY LOCK
<input checked="" type="checkbox"/> KEY UNLOCK
<input checked="" type="checkbox"/> RESET DEFAULT
<input checked="" type="checkbox"/> EMAIL FAILED
<input checked="" type="checkbox"/> FTP FAILED
<input checked="" type="checkbox"/> HDD DMA ERROR
<input checked="" type="checkbox"/> DDNS
<input checked="" type="checkbox"/> PPPoE
<input checked="" type="checkbox"/> DHCP

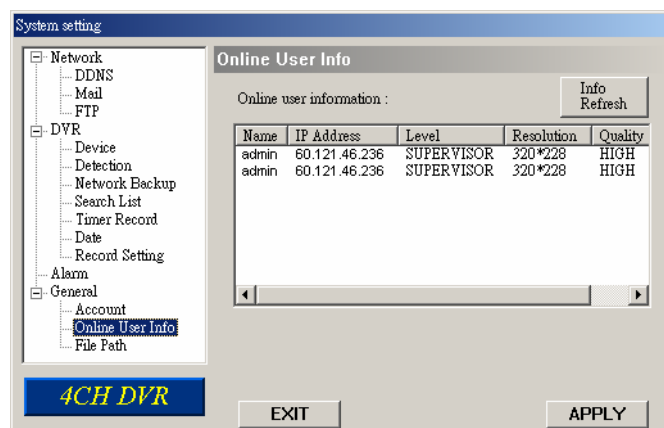
OK

- ❑ Set up the user's account (Max 5 accounts), password, life time, and authority level (Max 5 users on line at the same time).
- ❑ User's level:
SUPERVISOR —
 Control all the functions ("a", "b", "c", "d", "e" and "f").
HIGH —
 Control only "a", "b", "c", "d" and "e" functions, but cannot control "f" function.
NORMAL —
 Control only "a", "d", and "e" functions, but cannot control "b", "c" and "f" functions.
GUEST —
 Watch the image only. Only "a" function can be used.
- ❑ Life time :
 According to different authority levels, different accounts can stay online for different time periods (1 Min, 5 Min, 10 Min, 1 Hour, 1 Day, INFINITY).



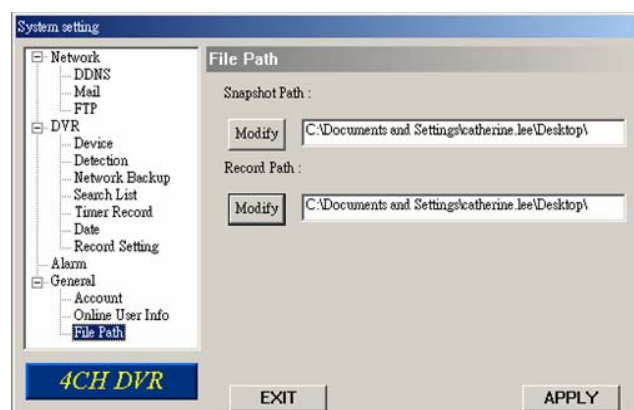
System Config > General > Online User Info

- ❑ Get all the current online users' information list (Name, IP Address, Authority Level, Resolution and Image Quality).



System Config > General > File Path

- ❑ **Snapshot Path:**
Assign the route for saving the snapshot picture.
- ❑ **Record Path:**
Assign the route for saving the manually recorded file.



Troubleshooting

PROBLEM	SOLUTION
No power	Check power cord connection. Confirm that there is power from the outlet.
Not working when pressing any button	Press any key and then enter the password to exit "Key Lock" mode.
Timer record is not working	Check if the "TIMER RECORD ENABLE" is set to "YES".
No live video	Check the camera's video cable and connections. Check the monitor's video cable and connections. Confirm the camera is power supplied. Check the setting of the camera lens.
No recorded video	Check if the HDD is installed and connected properly.
DVR keeps rebooting	Make sure the power connector and HDD are connected closely, or change another suitable HDD.
HDD detection failed	Change another HDD for testing. Change another HDD cable for testing. Make sure HDD "Master", "Slave" mode is correctly set.
Can't detect your USB flash drive	Change another USB flash drive to test.
Can't view the DVR images over the network with IE web browser	Update the JAVA program. Update the firmware of the software AP.
Can't play the recorded data on my DVR	There must be at least 8192 images of recorded data for playback to work properly. If not, your DVR will stop the playback. For example, if the IPS is set to 30, the recording time should be at least 273 seconds (8192 images / 30 IPS) for the playback to work properly.

Error Code in "SYSTEM LOG":

Meaning:

1) SYS ERR 01-YYY #define SYS_ERR_AV087_ERR YYY=000 YYY=001- AV087 YYY=002- AV087 YYY=004- AV087 YYY=008- AV087 YYY=003(001+002)	Compression error Audio chip error Chip for CH1-4 error Chip for CH5-8 error Chip for CH9-12 error Chip for CH13-16 error Chips for CH1-4 & CH5-8 error, etc
2) SYS ERR 02-XXX #define SYS_ERR_AV087_BUF_FULL	Buffer is full
3) SYS ERR 03-XXX #define SYS_ERR_AV087_BUF_EMPTY	Buffer is empty
4) SYS ERR 04-XXX #define SYS_ERR_IDE_ERR	IDE interface error
5) SYS ERR 05-XXX #define SYS_ERR_SCAN_DISK	Disk scanning error
6) SYS ERR 06-XXX #define SYS_ERR_TOP_FAT_ERR	File system error
7) SYS ERR 07 (including 08, 09, etc.)-XXX #define	HDD error

Connecting via Internet Explorer

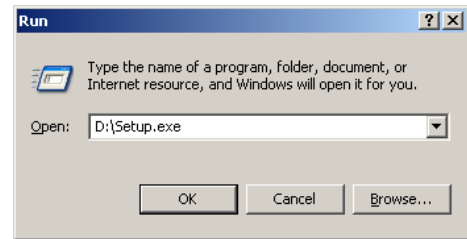
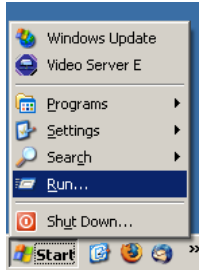
Install Java Runtime Environment

Before you can view your DVR in Internet Explorer you must have the *Java Runtime Environment* installed. This is supplied on the included CD.

To install the *Java Runtime Environment*:

- ❖ Insert the included CD into a computer running Windows 2000 or later.
- ❖ Open the *Start* menu and press *Run*.
- ❖ In the *Open* box type **D:\Java.exe** and press **OK**.
- ❖ Follow the on screen prompts to install the *Java Runtime Environment*.

Note: Replace **D** with the letter of your CD or DVD drive.



Connecting to the DVR

To log into the DVR you need to type the following address into Internet Explorer:

http://<ip-address>:<port>

You will need to replace the **<ip-address>** and **<port>** with the values from the *Advance > Network* section of the menu. For example using the default values, the address would be:

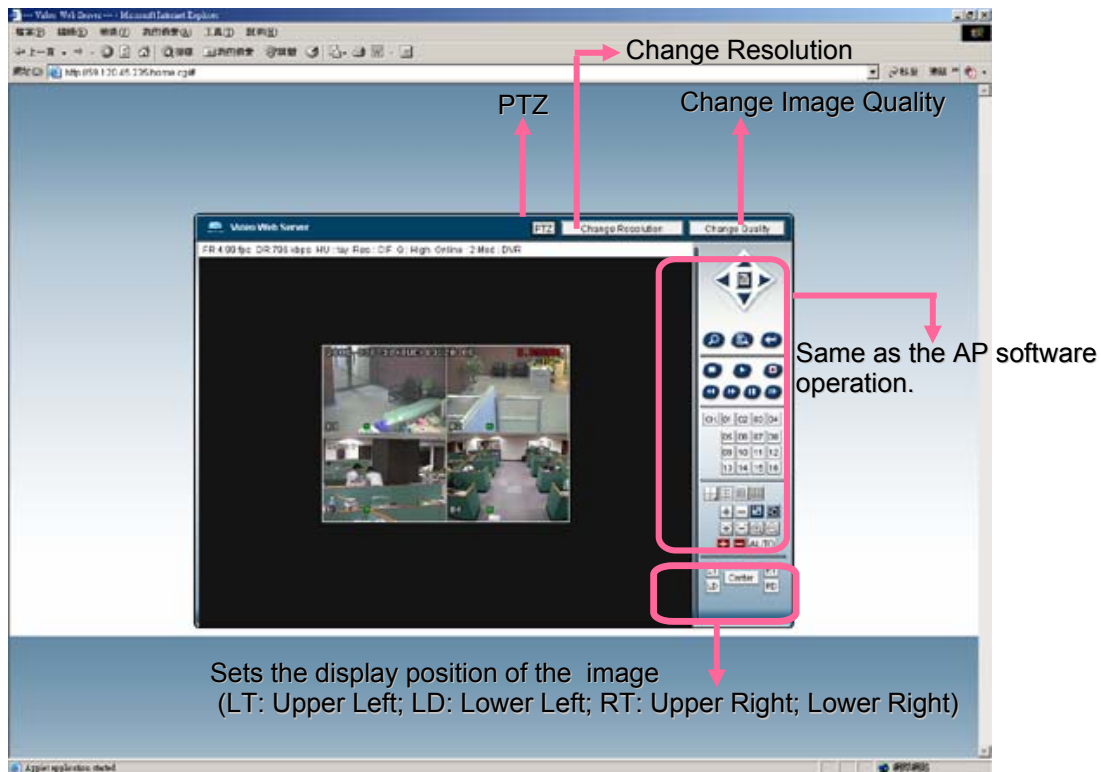
http://192.168.0.1:80

The following screen will then show. You can now login using the administrator account. The default username and password are **admin** and **admin**.



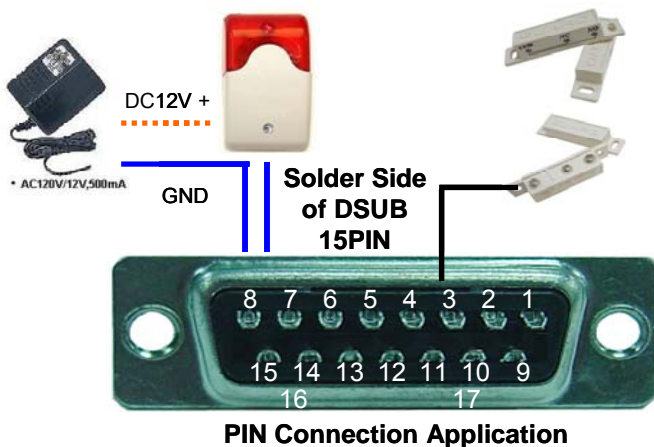
Internet Explorer Operation

Using the core elements of DVR in Internet Explorer is very similar to using the AP software. For further information, please refer to the AP software instructions



Pin Configuration

PIN	FUNCTION	DESCRIPTION
1	RS232-TX	DVR can be controlled remotely by the keyboard of PC by using RS-232 serial communication signals.
2	RS232-RX	DVR can be controlled remotely by the keyboard of PC by using RS-232 serial communication signals.
3~6	ALARM INPUT	To connect the wire from ALARM INPUT (PIN 3 -- 6) to GND (PIN 9) connector, DVR will start recording and the buzzer will be on. When "MENU -> CAMERA -> ALARM" is set to "Low" : When the alarm input signal is " Low ", the unit starts to record and buzzer. When "MENU -> CAMERA -> ALARM" is set to "High" : When the alarm input signal is " High ", the unit starts to record and buzzer.
7	EXTERNAL ALARM NC	Under the normal operation, COM connects with NC and disconnects from NO. But when any alarm is triggered, COM disconnects with NC and connects with NO. Attention: The voltage restriction is under AV/DC 30V.
8	EXTERNAL ALARM NO.	Under the normal operation, COM disconnects with NO. But when any alarm is triggered, COM connects with NO. Attention: The voltage restriction is under AV/DC 30V.
9	GND	Signal GND.
10	RS485-B	DVR can be controlled remotely by the keyboard of PC by using RS-485 serial communication signals.
11	RS485-A	DVR can be controlled remotely by the keyboard of PC by using RS-485 serial communication signals.
12~13	PIN OFF	
14	ALARM RESET	Connecting the wire from ALARM RESET (PIN 14) to GND (PIN 9) connector will disable alarms. An external signal to ALARM RESET (PIN 14) can be used to reset both ALARM OUTPUT signal and DVR's internal buzzer. When any alarm has been triggered, the signal becomes "Low", and all alarm activities will be stopped. Under the normal operation, the signal remains "High".
15	EXTERNAL ALARM COM	Under the normal operation, COM disconnects with NO. But when any alarm is triggered, COM connects with NO. Attention: The voltage restriction is under AV/DC 30V.
16~17	GND	Earth GND

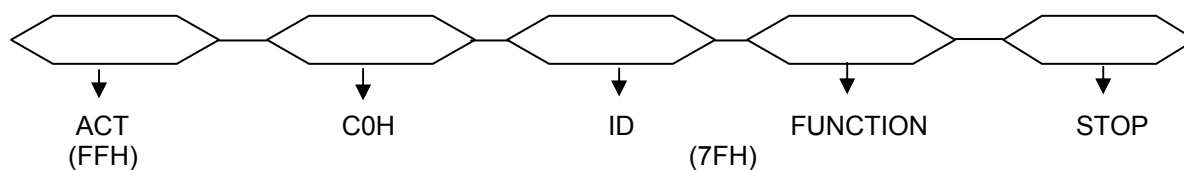


When the magnetic contact is opened, the alarm will be triggered and the recording is on. At the same time, COM connects with NO and the siren with strobe starts wailing and flashing.

NOTE: Please go to MENU -> ADVANCE -> DETECTION -> DETECTION SETUP, and set ALARM to LOW on the local machine.

RS-232 Protocol

- Use PC keyboards to simulate DVR keypads.
- Data: REMOTE PROTOCOL use 8 bit data, 1 start bit, 1 stop bit.



FUNCTION	CODE	ASCII	FUNCTION	CODE	ASCII
KEY_MENU	0x4D	M	KEY_DWELL	0x65	e
KEY_ENTER	0x0D	ENTER	KEY_CH1	0x31	1
KEY_PLUS	0x6b	k	KEY_CH2	0x32	2
KEY_MINUS	0x6d	m	KEY_CH3	0x33	3
KEY_UP	0x55	U	KEY_CH4	0x34	4
KEY_DOWN	0x4E	N	KEY_CH5	0x35	5
KEY_LEFT	0x4C	L	KEY_CH6	0x36	6
KEY_RIGHT	0x52	R	KEY_CH7	0x37	7
KEY_POWER	0x57	W	KEY_CH8	0x38	8
KEY_REC	0x72	r	KEY_CH9	0x39	9
KEY_PLAY	0x50	P	KEY_CH10	0x41	A
KEY_SLOW	0x53	S	KEY_CH11	0x42	B
KEY_ZOOM	0x5A	z	KEY_CH12	0x43	C
KEY_KEY LOCK	0x4B	K	KEY_CH13	0x44	D
KEY_AUDIO	0x64	d	KEY_CH14	0x45	E
KEY_SEARCH	0x73	S	KEY_CH15	0x46	F
KEY_PTZ_MODE	0x70	p	KEY_CH16	0x47	G
KEY_PTZ_PRESET	0x71	q	KEY_EJECT_DVD	0x6a	j
KEY_PTZ_ZOOM_IN	0x69	i	KEY_IRIS_NEAR	0x67	g
KEY_PTZ_ZOOM_OUT	0x66	f	KEY_IRIS_FAR	0x68	h
KEY_MODE	0x6f	o	KEY_PTZ_LIGHT	0x6c	l
KEY_4 CUT	0x61	a	KEY_PTZ_WIPER	0x77	w
KEY_9 CUT	0x62	b			
KEY_16 CUT	0x63	c			
KEY_SET_CHANNEL	0x6e	n			

Hard Drive Installation

Unscrew the two screws respectively on the two sides of the upper cover.
Unscrew the four screws on the back side of the upper cover.



Make sure your hard drive is set to Master. Refer to the hard drive manufacturer's website if you are unsure.

Mount the hard drive in the internal bracket and attached the power and data cables.



Fig. 1



Fig. 2



Fig. 3



Fig. 4



Fig. 5

Section 3 - Remote Setup Guide

Introduction

This guide covers how to use the remote connection functionality of your DVR in a local area network (LAN).

In order to connect to your DVR over the internet you will need to configure your internet connection (i.e. a modem or router) to allow incoming connections.

Due to the wide range of hardware and network configurations available, it isn't possible to provide a complete guide on this procedure.

We **strongly recommend** you speak to an IT professional, such as your Internet Service Provider (ISP) or a network technician to help you set this up.

The section below titled *General Connection Information* should provide enough information for an IT professional to configure your equipment,

General Connection Information

By default, the DVR requires **port 80** forwarded to **192.168.0.1**. This will allow both the AP software and the web browser applet to traverse the NAT. Both the IP and the port number can be configured from **Menu > Advance > Network** on the DVR - Refer to page 14 for more information.

Configuration of a D-link DSL504T (v2) for use with the DVR

In order to make it easier for end users to setup remote viewing, we have included the following guide for setting up your DVR with a **D-link DSL-504T** ADSL Router.

If you do not currently have an internet connection or modem/router, and plan to use the remote viewing functions, we strongly suggest you purchase the above model.

Initial Router Setup

The DSL-504T comes with a *Quick Installation Guide* which should guide you through physically connecting the router as well as inputting your own internet connection details (such as your username and password).

Once you have successfully connected the router to the internet (i.e. you can browse to websites) move onto the next step. If you can't get your computer to connect to the internet then please contact D-link or your Internet Service Provider (ISP).

Dynamic DNS

In order for you to connect to the DVR from a remote site, you will need to know the IP address of your router. There are two types of IP address:

Static IP – Your internet connection may come with a static IP address which never changes. To find out if this is the case you will need to contact your internet service provider (ISP). If you do have a static IP you can skip to the next section, *DVR IP Address*. Make sure you write down your static IP for future reference.

Dynamic IP – If you don't have a static IP then your address is said to be dynamic. This means that it will change from time to time. To get around this issue you can sign up for what is known as a *Dynamic DNS*.

By using a Dynamic DNS, you create a user-friendly name that gets updated every time the IP address changes. To do this an account must be set up with DynDNS.com, with the account information then entered into the router.

Go to <http://www.dyndns.com> and click **Create Account** in the upper right of the window.

Follow the prompts and fill out the create account form. You will shortly receive an email instructing you on how to activate your account.

Once you have activated your account, log into the <http://www.dyndns.org> website using the username and password you have created.

From the menu on the left:

- ❖ Click **My Services**
- ❖ Click **My Hosts**
- ❖ Click **Dynamic DNS**

From the page that loads:

- ❖ Click **Add Host**

From the form that loads:

- ❖ Enter the a memorable name as the *Hostname*
- ❖ Select an appropriate *Domain Name* from the drop down list.
- ❖ Click *Add Host* to submit the form

Once the next page loads, log out of the website.

Log into the router and click on *Dynamic DNS* menu item.

- ❖ Change the *DDNS Server* to **www.dyndns.org**
- ❖ Enter the details for the *Username*, *Password* and *Host Name* as per the DynDNS account you created.

Save the settings:

- ❖ Click *Apply*
- ❖ Click the *Tools* tab
- ❖ Click the *System* menu item
- ❖ Click the *Save and Reboot* button and select OK when prompted to continue.

The screenshot shows the D-Link DSL-504T ADSL Router web interface. The 'Dynamic DNS Configuration' page is displayed, showing the 'Dynamic DNS' menu item selected in the left sidebar. The main content area has tabs for Home, Advanced, Tools, Status, and Help. The 'Dynamic DNS Configuration' section includes a description: 'The DDNS Configuration allows the user to set the configuration of DDNS.' Below this, there are fields for 'DDNS Server' (set to www.dyndns.org), 'User Configuration' (Username, Password, HostName), and buttons for 'Apply', 'Cancel', and 'Help'.

DVR IP Address

Following the instructions in page 14 of the manual, go to the *Advance > Network* section of the DVR menu, select static and enter the following:

- IP address :10.1.1.50
- Subnet :255.0.0.0
- Gateway : Your routers IP address (Default : 10.1.1.1)

LAN Clients

Log into the router and click on the *Advanced* tab:

- ❖ Click on the *LAN Clients* menu item
- ❖ In the IP Address field enter **10.1.1.50**
- ❖ In the Host Name field enter **DVR**
- ❖ Press the **Add** button

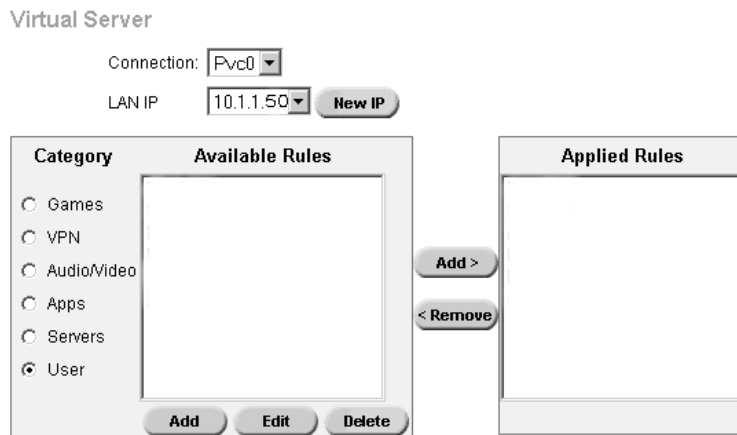
LAN Clients

IP Address	<input type="text"/>
Host Name	<input type="text"/>
<input type="button" value="Add"/>	

Port Forwarding

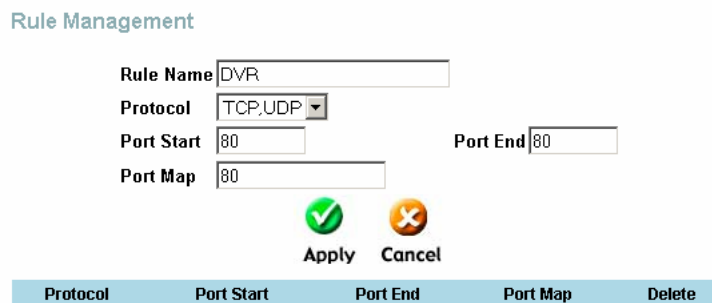
Log into the router and click on the *Advanced* tab:

- ❖ Click on the *Virtual Server* menu item
- ❖ From the LAN IP drop down list make sure **10.1.1.50** is selected
- ❖ Select the **User** check box from the *Category* list on the left and wait for the page to reload
- ❖ Press the **Add** button in the bottom left



When the page loads:

- ❖ Set the **DVR** as the *Rule Name*
- ❖ Set the *Protocol* to **TCP, UDP**
- ❖ Set the *Port Start*, *Port End* and *Port Map* to **80**
- ❖ Press the *Apply* button.



Protocol	Port Start	Port End	Port Map	Delete
----------	------------	----------	----------	--------

Once the page reloads:

- ❖ Click on the *Virtual Server* menu item
- ❖ From the LAN IP drop down list make sure **10.1.1.50** is selected
- ❖ Select the **User** check box from the *Category* list on the left and wait for the page to reload
- ❖ Select the **DVR** item from the *Available Rules* and press the **Add>** button to the right of the *Available Rules* list.

Once the page reloads:

- ❖ You should now have the **DVR** item in the *Applied Rules* list.
- ❖ Click the *Tools* tab
- ❖ Click the *System* menu item
- ❖ Click the *Save and Reboot* button

Connecting Remotely

Note: If connecting from the local network, you **MUST** use the internal IP address (eg 10.1.1.50). For more information on connecting using Internet explorer, see page 29.

You should now be able to remotely access your DVR. If you have a static IP you should type this into your web browser: **http://<static-ip>/** (replace <static-ip> with the actual number)

If you have a Dynamic DNS type this into your web browser:
http://<dynamic-dns>/ (replace <dynamic-dns> with your full hostname – e.g. *mydvr.dyndns.org*)

When you are connecting using the AP software, enter either you static IP address or your dynamic DNS as the IP Address.