



Product Catalogue

Celebrating 34 Years Supplying the Electronic Security Industry



Now Available

ENSATM LED Security Lighting

Energy Saving & Security Solutions for a Brighter Future[®]

- CCTV SURVEILLANCE PRODUCTS
- HOME & COMMERCIAL ALARMS
- ACCESS CONTROL SYSTEMS
- ENERGY SAVING DEVICES
- CAR ALARMS & IMMOBILISERS
- GPS TRACKING
- BUSINESS PHONE SYSTEMS
- POWER SUPPLIES & CABLES

WHY RHINO?

RhinoCo Technology has been an integral part of the electronic security industry since 1978.

Our company is proudly Australian-owned and still growing after 34 years in business. We have become best known over the years for our world renowned Rhino™ brand of vehicle security systems, our Watchguard™ brand of wireless security and surveillance systems, our Securview™ range of professional video surveillance equipment and our EasyPBX™ business phone systems.

Since 1978 we have been designing "in-house" our own range of electronic security products. We have a team of dedicated hardware and software engineers that focus on key product areas.

Manufacturing:

For over thirty years we have manufactured our products using advanced techniques. In fact, RhinoCo Technology was one of the first in Australia to adopt surface-mount production technology. The desire to export products worldwide at competitive prices has changed our manufacturing process. Now the majority of our low end production is undertaken by our ISO9001 quality certified factories in Taiwan & China.

OEM Engineering & Contract Manufacturing:

We have produced many OEM designs for numerous clients over the years, particularly in the areas of wireless radio interfaces, vehicle security systems and wireless video transmission. We have supplied complete wireless add-on alarm solutions for major alarm control panel manufacturers, designed custom vehicle security systems for armoured vehicle fleets, control panel wireless interfaces and wireless digital video transmission equipment, to name a few.

Procurement / Customised Product Solutions:

As well as our own designed and produced products, we have established long-term relationships with key electronic security and technology suppliers around the world. Due to our vast range and experience in almost all areas of electronic security, we are often called upon to develop customised solutions. Do you have a mobile video surveillance solution with online GPS tracking, integrated alarm/immobiliser and wireless duress button? Or can you supply a completely wireless, multi-channel, solar powered, wireless digital CCTV solution with remote access? Whatever our client requirements, we will strive to provide the winning solution.

Worldwide Sales & Distribution:

We have a large customer base of industry trade professionals, government departments and major retailers. Our product range caters for these distinct markets.

We have established branch offices in the international business market, expanding into the United Kingdom, Italy and South Africa to promote and distribute our range. We are able to ship factory direct worldwide to enable us to be highly competitive in the markets we choose to enter.

The Future:

This year we celebrate our 35th year in the electronic security industry - no small feat in this highly competitive market!

We aim to be more than your average electronic security wholesaler/distributor and will strive to be an engineering design house at your service.

We look forward to continually expanding our business both locally and internationally and we will always endeavour to support you, our valued customer, with the largest range of leading-edge, value for money products with the best technical support in the industry.

Let us prove it to you!



Security Master Licence: 407530935

Due to continual product advancement, specifications and appearance are subject to change without notice.

©2012 RhinoCo Technology.



We Are A Lot More Than Your Electronic Security Wholesaler / Distributor



We specialise in building and customising your NVR/ DVR solutions



We Are Your Engineering Design House
Product Development Services Available

CONTENTS

ENSA LED LIGHTING

5

- LED Industrial Lighting
- LED Flood Lighting
- LED Tube Lighting
- LED Globe Lighting

CCTV SURVEILLANCE PRODUCTS

12

- Surveillance Cameras & Accessories
- Digital Video Recorders & Accessories
- Monitors & Rackmount Products
- Networking Products
- Wireless Transmission Products

HOME & BUSINESS - SECURITY & SAFETY PRODUCTS

35

- "Retail Ready" Surveillance Products
- Back to Base Monitored Alarm Systems
- Wireless Alarm Systems & Accessories
- Fire Safety Products
- Hardwired Alarm Systems
- Electronic Article Surveillance
- Universal Transmitters & Receivers
- Energy Saving Devices (ENSA)

VEHICLE SAFETY & SECURITY

47

- Vehicle Alarms & Immobilisers
- Vehicle Alarm Accessories
- Vehicle & Personal Tracking
- Mobile Digital Video Recorders
- Reversing Kits, Sensors and Cameras

POWER SUPPLIES, CABLES, CONNECTORS & ACCESSORIES

58

- Batteries, Power, Leads & Connectors
- Cables & Tools
- Baluns & Video Protection Equipment
- Remote Controls & Accessories

BUSINESS PHONE SYSTEMS

67

- PBX Business Phone Systems
- PBX Business Phone System Accessories



ENSA LED Lighting

STREET LIGHTING

LED Street Lighting

7

HIGH BAY LIGHTING

LED High Bay Lighting

8

FLOOD LIGHTING

LED Flood Lighting

9

TUBE LIGHTING

LED Tube Lighting

10

LED Tube Sensor Lighting

10

GLOBE LIGHTING

LED Globe Lighting

11

The ENSA LED Lighting Range aims to provide you with cost-effective illumination solutions that can be implemented safely and simply. The products available can be used to light small and large areas, as well as indoor and outdoor spaces. They are also ideal for minimising your impact on the environment and reducing energy consumption. See the benefits of installing ENSA LED lighting below.

ADVANTAGES OF ENSA LED LIGHTING

Dramatic Energy Savings

LED lighting can consume up to 70% less energy than conventional high intensity discharge (HID) or metal halide lamps. As energy prices increase, LED lighting can save you thousands on your electricity bill.

No Warm-up or Cool-down Phase

LED lights reach maximum intensity immediately after being switched on. In the event of a momentary loss of power, HID lamps may take up to 20 minutes to reach maximum brightness.

Increased Product Lifespan

LED lighting products have a rated operating lifespan far higher than that of conventional HID, halogen, metal halide and even compact fluorescents.

Completely Free of Hazardous Materials

Unlike fluorescent tubes and compact fluorescent lamps, LED lights contain no mercury. They also do not emit any infrared or ultraviolet radiation.

Environmentally Friendly Lighting

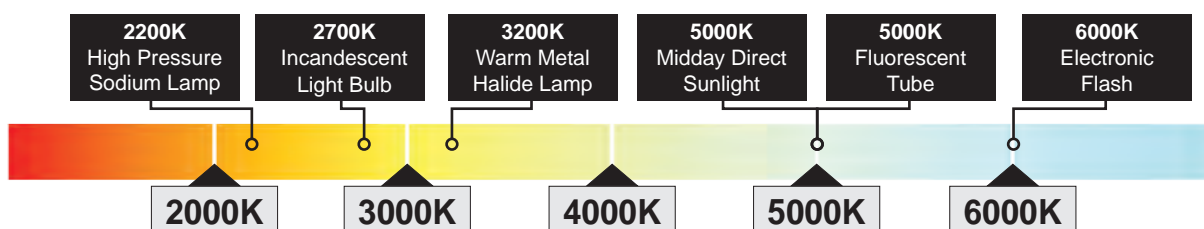
The reduction in energy consumption offered by LED lighting means that less carbon dioxide is released into the atmosphere.

Robust Lighting Installations

LED lighting does away with the audible buzzing noises, light flickering and ambient heat generated by conventional lighting. LED light fixtures are also more resistant to shock and vibration.

DEFINING COLOUR TEMPERATURE

The ENSA LED lighting range is available in a number of colour temperatures to suit your needs. Below is a reference scale charting existing light sources and their colour temperature. Refer to this chart when selecting from our LED lighting range.



ENSA LED STREET LIGHTING

LED Street Lighting is one of the most widely applicable solutions for achieving energy efficiency. Not only do LED street lights consume less energy than traditional HID lamps but they turn on instantly without a warm-up phase and have a much longer product life.



ENSA 168W LED Street Light

Part No: LEDSL168W

The LEDSL168W has a super slim body for superb heat conduction. The LEDSL168W street light utilises US Bridgelux high-lumen integrating encapsulated LED technology. It has an increased lifespan with an LED light decay of less than 15% over 20,000 hours of use. It comes with a 62mm diameter bracket for mounting.

Replaces 400W HID Street Lamp



ENSA 160W LED Street Light

Part No: LEDSL160W

The LEDSL160W has a multi-surface heat sink design that improves air-flow and heat conductivity. The LED street light utilises US Bridgelux high-lumen integrating encapsulated LED technology. It has an increased lifespan with an LED light decay of less than 15% over 20,000 hours of use. It comes with a 62mm diameter bracket for mounting.

Replaces 350W HID Street Lamp

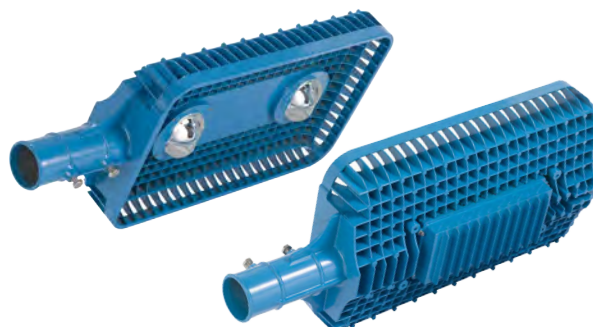


ENSA 160W LED Street Light

Part No: LEDSL160W2

The LEDSL160W2 has a multi-surface heat sink design that improves air-flow and heat conductivity. The LED street light utilises US Bridgelux high-lumen integrating encapsulated LED technology. It has an increased lifespan with an LED light decay of less than 15% over 20,000 hours of use. It comes with a 62mm diameter bracket for mounting.

Replaces 350W HID Street Lamp



ENSA 140W LED Street Light

Part No: LEDSL140W

The LEDSL140W has a multi-surface heat sink design that improves air-flow and heat conductivity. The LED street light utilises US Bridgelux high-lumen integrating encapsulated LED technology. It has an increased lifespan with an LED light decay of less than 15% over 20,000 hours of use. It comes with a 62mm diameter bracket for mounting.

Replaces 300W HID Street Lamp

Specification	LEDSL168W	LEDSL160W	LEDSL160W2	LEDSL140W
LED Power Consumption	168W (168x 1W)	160W (2x 80W)	160W (2x 80W)	140W (2x 70W)
Lamp Maintain Flux	14280lm	13600lm	13600lm	12000lm
Colour Temperature	4500K / 6000K	4500K / 6000K	4500K / 6000K	4500K / 6000K
Colour Rendering Index	Ra > 70	Ra > 70	Ra > 70	Ra > 70
Light Distribution Curve	Asymmetric (Bat Wing)	Asymmetric (Bat Wing)	Asymmetric (Bat Wing)	Asymmetric (Bat Wing)
Beam Angle	140°	140°	140°	140°
Input Voltage	85V-265VAC (50-60Hz)	85V-265VAC (50-60Hz)	85V-265VAC (50-60Hz)	85V-265VAC (50-60Hz)
Power Factor	> 0.95	> 0.95	> 0.95	> 0.95
IP Rating	IP65	IP65	IP65	IP65
Dimensions	470 x 320 x 150 mm	810 x 340 x 190 mm	950 x 340 x 190 mm	720 x 330 x 140 mm
Net Weight	9.0kg	10.0kg	12.0kg	10.0kg

ENSA LED HIGH BAY LIGHTING

LED high bay lights can provide dramatic reductions in energy consumption compared to conventional HID high bay lamps. They are functionally more efficient than HIDs, immediately reaching maximum brightness on power-on. LED high bay lights are ideal for use in warehouses, factories, large retail spaces, school halls, etc.



ENSA 200W LED High Bay Light

Part No: LEDHB200W

The LEDHB200W's high quality aluminium alloy fins greatly boosts heat conductivity and air-flow. The LED high bay light utilises US Bridgelux high-lumen integrating encapsulated LED technology. It has an increased lifespan with an LED light decay of less than 15% over 20,000 hours of use.

Reflectors are available in polycarbonate or aluminium with beam angles of 45°, 90° and 120°. The fixture is completely free of hazardous materials including mercury and lead.

Replaces 500W HID High Bay



ENSA 150W LED High Bay Light

Part No: LEDHB150W

The LEDHB150W's high quality aluminium alloy fins greatly boosts heat conductivity and air-flow. The LED high bay light utilises US Bridgelux high-lumen integrating encapsulated LED technology. It has an increased lifespan with an LED light decay of less than 15% over 20,000 hours of use.

Reflectors are available in polycarbonate or aluminium with beam angles of 45°, 90° and 120°. The fixture is completely free of hazardous materials including mercury and lead.

Replaces 400W HID High Bay

ENSA 30W - 120W LED High Bay Light

Part No: LEDHB30W / 50W / 60W / 80W / 100W / 120W

The lower wattage ENSA LED high bay range scales down the size to fit a wider range of applications beyond large facilities. They utilise US Bridgelux high-lumen integrating encapsulated LED technology and have an increased lifespan with an LED light decay of less than 15% over 20,000 hours of use.

Reflectors are available in polycarbonate or aluminium with beam angles of 45°, 90° and 120°. The fixture is completely free of hazardous materials including mercury and lead.

Replaces 75W - 300W HID High Bay



Specification	LEDHB200W	LEDHB150W	LEDHB30W/50/60/80/100/120
LED Power Consumption	200W (1x 200W)	150W (1x 150W)	30-120W (1x 30-120W)
Lamp Maintain Flux	15500lm	11500lm	2550 - 10200lm
Colour Temperatures	4500K / 6000K	4500K / 6000K	4500K / 6000K
Colour Rendering Index	Ra > 70	Ra > 70	Ra > 70
Light Distribution Curve	Circle Facula	Circle Facula	Circle Facula
Reflector Beam Angles	45° / 90° / 120°	45° / 90° / 120°	45° / 90° / 120°
Input Voltage	85V-265VAC (50-60Hz)	85V-265VAC (50-60Hz)	85V-265VAC (50-60Hz)
Power Factor	> 0.95	> 0.95	> 0.95
IP Rating	IP54	IP54	IP54
Dimensions (body only)	390 x 310 x 310 mm	340 x 270 x 210 mm	Varies
Net Weight	7.0kg	8.0kg	Varies

ENSA LED FLOOD LIGHTING

LED floodlights and tunnel lights are an efficient alternative to traditional HPS (high-pressure sodium), metal-halide and halogen floodlights. LED floodlights can save you 50-70% on your current outdoor lighting costs! Each light sports a rugged aluminium chassis that is sealed for outdoor use.

ENSA 20W LED Flood Light

Part No: LEDFL20W



Small 20W LED flood light. The LED flood light utilises US Bridgelux high-lumen integrating encapsulated LED technology. The flood light uses aluminium and tempered glass construction for rugged outdoor use. It also has a hinging bracket for mounting.

Replaces 50W HID Flood Light

ENSA 30W LED Flood Light

Part No: LEDFL30W



30W LED flood light. The LED flood light utilises US Bridgelux high-lumen integrating encapsulated LED technology. The flood light uses aluminium and tempered glass construction for rugged outdoor use. It also has a hinging bracket for mounting.

Replaces 70W HID Flood Light

ENSA 50W LED Flood Light

Part No: LEDFL50W



50W LED flood light. The LED flood light utilises US Bridgelux high-lumen integrating encapsulated LED technology. The flood light uses aluminium and tempered glass construction for rugged outdoor use. It also has a hinging bracket for mounting.

Replaces 120W HID Flood Light

ENSA 70W LED Flood Light

Part No: LEDFL70W



70W LED flood light. The LED flood light utilises US Bridgelux high-lumen integrating encapsulated LED technology. The flood light uses aluminium and tempered glass construction for rugged outdoor use. It also has a hinging bracket for mounting.

Replaces 160W HID Flood Light

ENSA 100W Circular LED Flood Light

Part No: LEDFL100W

100W circular LED flood light, built for outside use. This LED flood light has a multi-surface heat sink design that increases heat conductivity and air-flow. The LED flood light utilises US Bridgelux high-lumen integrating encapsulated LED technology. It also has a hinging bracket for mounting.

Replaces 225W HID Flood Light



Specification	LEDFL20W	LEDFL30W	LEDFL50W	LEDFL70W	LEDFL100W
LED Power Consumption	20W (1x 20W)	30W (1x 30W)	50W (1x 50W)	70W (1x 70W)	100W (1x 100W)
Lamp Maintain Flux	1700lm	2550lm	4250lm	5950lm	8500lm
Colour Temperatures	4500K / 6000K	4500K / 6000K	4500K / 6000K	4500K / 6000K	4500K / 6000K
Colour Rendering Index	Ra > 70	Ra > 70	Ra > 70	Ra > 70	Ra > 70
Light Distribution Curve	Rectangular Facula	Rectangular Facula	Rectangular Facula	Circle Facula	Round Facula
Beam Angle	140°	140°	140°	90°	90°
Input Voltage	85V-265VAC (50-60Hz)	85V-265VAC (50-60Hz)	85V-265VAC (50-60Hz)	85V-265VAC (50-60Hz)	85V-265VAC (50-60Hz)
Power Factor	> 0.93	> 0.93	> 0.93	> 0.95	> 0.95
IP Rating	IP65	IP65	IP65	IP65	IP65
Dimensions	180 x 140 x 100 mm	230 x 190 x 130 mm	290 x 240 x 160 mm	400 x 290 x 120 mm	Ø320 x 180 mm
Net Weight	1.2kg	2.0kg	3.4kg	5.5kg	6.0kg

ENSA LED TUBE LIGHTING

As a replacement for fluorescent tubes, energy efficient LED tubes can reduce your power bill by at least 50%! They can be easily retrofitted into existing installations. They are ideal for use in offices, stores, factories, warehouses, public transport, supermarkets, shop displays, and exhibition lighting.

ENSA 10W / 20W LED Tube Light

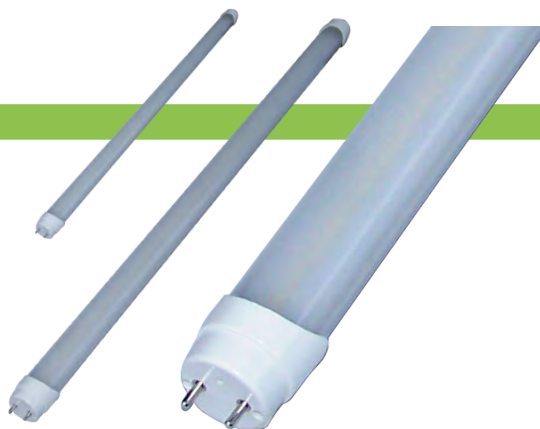
Part No: LEDTU10W / LEDTU20W

The LED sensor tube comes in standard tube sizes to be retrofitted into existing installations. This includes magnetic and electronic ballast configurations.

The LED tube is covered by a frosted translucent plastic that provides a soft, diffuse light.

Unlike fluorescent tubes, LED tubes do not contain any mercury, nor do they emit UV radiation.

Replaces 25W - 45W Fluorescent Tubes



ENSA LED SENSOR TUBE LIGHTING

The inclusion of the infrared sensor means that the light dims when there's no movement in a room. When movement is detected, the tube light brightens. The sensor tubes use less power when dimmed which contributes to your electricity savings! This makes the sensor light ideal for underground/storey car parks, underpasses and other areas with intermittent movement.

ENSA 9W / 19W LED Tube Light with Sensor

Part No: LEDTU9WS / LEDTU19WS

The ENSA LED sensor tube is an intelligent light installation that dims when no motion is detected. Motion detection range is 4m in a 120° arc. When motion is detected the tube will automatically switch to normal brightness. If no motion is detected after 30 seconds the tube will dim, returning to energy saving mode.

The LED sensor tube comes in standard tube sizes to be retrofitted into existing installations. This includes magnetic and electronic ballast configurations.

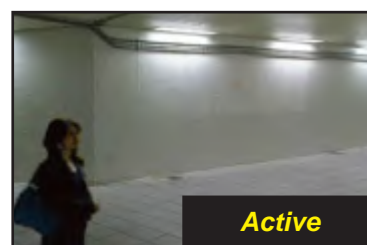
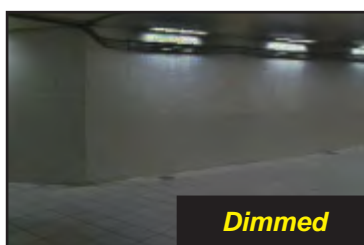
The LED tube is covered by a frosted translucent plastic that provides a soft, diffuse light.

Unlike fluorescent tubes, LED tubes do not contain any mercury, nor do they emit UV radiation.

Replaces 25W - 45W Fluorescent Tubes



When dimmed, LED tubes use only one fifth of their typical energy consumption when at full brightness. This compounds with the energy savings of fitting LED tubes over regular fluorescent tubes!



Specification	LEDTU10W	LEDTU20W	LEDTU9WS	LEDTU19WS
LED Power Consumption	10W	20W	9W / 2W (Dimmed)	19W / 4W (Dimmed)
Lamp Maintain Flux	800lm	1600lm	630lm / 130lm (Dimmed)	1350lm / 280lm (Dimmed)
Colour Temperatures	5000K	5000K	5000K	5000K
Colour Rendering Index	Ra > 60	Ra > 60	Ra > 60	Ra > 60
Beam Angle	120°	120°	120°	120°
Input Voltage	90-264VAC (50-60Hz)	90-264VAC (50-60Hz)	100-240VAC (50-60Hz)	100-240VAC (50-60Hz)
Power Factor	> 0.90	> 0.90	> 0.90	> 0.90
Dimensions	Ø25.8 x 580 mm	Ø25.8 x 1198 mm	Ø30.5 x 580 mm	Ø30.5 x 1198 mm
Fitting Size	T8 - Ø25.4 mm	T8 - Ø25.4 mm	T8 - Ø25.4 mm	T8 - Ø25.4 mm
Net Weight	0.20kg	0.40kg	0.27kg	0.47kg

ENSA LED globe lighting is designed to retrofit with your existing fittings, save on your electricity bill and be environmentally friendly. They are ideal for use in homes, offices, stores, factories, shop displays

ENSA 10.5W LED Globe

Part No: LEDGL10.5W

Power consumption: 10.5W
Lamp Flux: 700lm
Colour Temperature: 3500K / 5500K
Base Fixture: E27
Input Voltage: 12V AC/DC

Replaces 50W Globes



ENSA 13.5W LED Globe

Part No: LEDGL13.5W

Power consumption: 13.5W
Lamp Flux: 800lm
Colour Temperature: 3500K / 5500K
Base Fixture: E27
Input Voltage: 12V AC/DC

Replaces 60W Globes



ENSA 15W LED Flood PAR30

Part No: LEDGL15WF

Power consumption: 15W
Lamp Flux: 800lm
Colour Temperature: 2700K / 5500K
Base Fixture: E27
Input Voltage: 100-240V AC 50-60Hz

Replaces 80W PAR30 Floods



ENSA 15W LED Flood PAR38

Part No: LEDGL15W38

Power consumption: 15W
Lamp Flux: 800lm
Colour Temperature: 2700K / 5500K
Base Fixture: E27
Input Voltage: 100-240V AC 50-60Hz

Replaces 80W PAR38 Floods

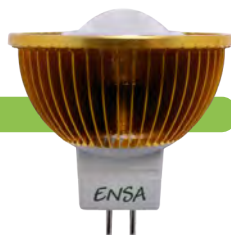


ENSA 7W MR16 LED Globe GX5.3 V7

Part No: LEDGL7WGXV7

Power consumption: 7W
Lamp Flux: 580lm
Colour Temperature: 2800K / 4500K
Beam Angles: 38° / 60° / 100° (pictured)
Input Voltage: 12V AC/DC

Replaces 50W Halogen Lights

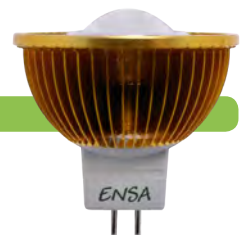


ENSA 7W MR16 LED Globe GX5.3 V5

Part No: LEDGL7WGXV5

Power consumption: 7W
Lamp Flux: 500lm
Colour Temperature: 2800K / 4500K
Beam Angles: 38° / 60° / 100° (pictured)
Input Voltage: 12V AC/DC

Replaces 50W Halogen Lights



ENSA 7W MR16 LED Globe GU10 V7

Part No: LEDGL7WGUUV7

Power consumption: 7W
Lamp Flux: 580lm
Colour Temperature: 2800K / 4500K
Beam Angles: 38° / 60° / 100° (pictured)
Input Voltage: 100-240V AC 50-60Hz

Replaces 50W Halogen Lights



ENSA 7W MR16 LED Globe GU10 V5

Part No: LEDGL7WGUUV5

Power consumption: 7W
Lamp Flux: 500lm
Colour Temperature: 2800K / 4500K
Beam Angles: 38° / 60° / 100° (pictured)
Input Voltage: 100-240V AC 50-60Hz

Replaces 50W Halogen Lights



ENSA 7W MR16 LED Globe GU10 V7 Dimmable

Part No: LEDGL7WGUUV7D

Power consumption: 7W
Lamp Flux: 580lm
Colour Temperature: 2800K / 4500K
Beam Angles: 38° / 60° / 100° (pictured)
Input Voltage: 8V DC

Replaces 50W Halogen Lights

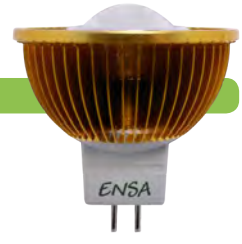


ENSA 7W MR16 LED Globe GX5.3 V5 Dimmable

Part No: LEDGL7WGXV5D

Power consumption: 7W
Lamp Flux: 500lm
Colour Temperature: 2800K / 4500K
Beam Angles: 38° / 60° / 100° (pictured)
Input Voltage: 8V DC

Replaces 50W Halogen Lights





Professional CCTV Products

DIGITAL IP SURVEILLANCE SOLUTIONS

VIP Vision Network CCTV Kits	14
VIP Vision NVR Solutions	15
VIP Vision NVR Accessories	16
VIP Vision IP Cameras	19

ANALOGUE SURVEILLANCE SOLUTIONS

Stand Alone Digital Video Recorders	21
Complete CCTV Packages	23
XR Series Cameras	24
Dome Cameras	25
Bullet Cameras	26
PTZ Speed Dome Cameras	27
PTZ Accessories	27

SURVEILLANCE ACCESSORIES

CCTV Surveillance Signs	27
IR Illuminator	28
Analogue Camera Lenses	28
Camera Accessories	28
Camera Housing s & Brackets	29
DVR & Video Surveillance Accessories	30
DVR & PC Display Monitors	31
Monitor Brackets	31

NETWORKING PRODUCTS

Network Communication	32
Wireless Transmission 5.8Ghz	34
Wireless Transmission 2.8Ghz	34

2 MEGAPIXEL NETWORK CCTV KITS



MAKE THE SWITCH TO HD QUALITY CCTV

Part No: NVRO8PACK

Part No: NVRI6PACK

Part No: NVR24PACK



2 Megapixel Resolution
(1600x1200)



- Available in 8, 16 or 24 Channel Kits
- Indoor/Outdoor 2MP Domes Included
- View over the Internet and Smartphone
- Intelligent NVR Analytic Software
- Included 23" LED Monitor
- Power Over Ethernet (PoE) Switch
- Up to 10TB of Hard Drive Capacity
- Bundled with All Necessary Cables

System Features

H.264

Video Compression
Increased Recording
Duration

2MP

1600x1200 Resolution
High Quality
Recording

128ch

Monitor Multiple Systems
128CH Remote LiveView
(requires 2 monitors)



Email Alerts on
System Events



Searchable
Point of Sale



Web-Based Remote
Live View



Intelligent Search
Functionality

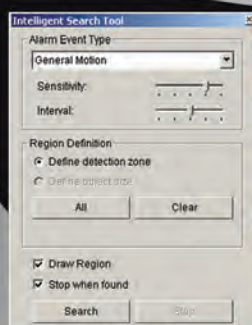
Powerful Playback Functionality - VIP Vision NVR Analytic Software

Search recorded footage faster and smarter with five intelligent search parameters. Easily find out when events occur by highlighting an area of interest directly onto the camera image. Other playback features include:



- Open record by time, graphic record or by event log
- Video enhancement for image fine-tuning
- Multi-channel playback

- Support digital watermark on exported video/images
- Searchable Point of Sale (POS) transactions
- Auto backup to FTP





VIP Vision 8 Channel NVR Kit with 8x 2 Megapixel IP Dome Cameras

Part No: NVR08PACK

The NVR08PACK is a professional network surveillance package. The NVR08PACK utilises the high quality VIP Vision interface and Video Analytic Software with features such as intelligent search and people/object counting. This NVR kit provides a comprehensive, two megapixel CCTV solution that can be scaled to fit any application.

The kit comes bundled with all components including hard drives (installed), power over ethernet switch (PoE) and cables.

Package Includes:

- (1x) 8 Channel H.264 Network Video Recorder
- (1x) 23" LED Monitor
- (2x) 2TB HDD for 4TB Total Capacity
- (4x) 2 Megapixel IP Vandal Proof Dome with 20m IR
- (4x) 2 Megapixel Vandal Proof Mini Dome
- (1x) 8 Port Power over Ethernet Switch
- (8x) 30m CAT5 Network Cable / (1x) 1.5m CAT5 Network Cable



VIP Vision 16 Channel NVR Kit with 16x 2 Megapixel IP Dome Cameras

Part No: NVR16PACK

The NVR16PACK is a professional network surveillance package. The NVR16PACK utilises the high quality VIP Vision interface and Video Analytic Software with features such as intelligent search and people/object counting. This NVR kit provides a comprehensive, two megapixel CCTV solution that can be scaled to fit any application.

The kit comes bundled with all components including hard drives (installed), power over ethernet switch (PoE) and cables.

Package Includes:

- (1x) 16 Channel H.264 Network Video Recorder
- (1x) 23" LED Monitor
- (4x) 2TB HDD for 8TB Total Capacity
- (8x) 2 Megapixel IP Vandal Proof Dome with 20m IR
- (8x) 2 Megapixel Vandal Proof Mini Dome
- (1x) 24 Port Managed Power over Ethernet Switch
- (16x) 30m CAT5 Network Cable / (1x) 1.5m CAT5 Network Cable



VIP Vision 24 Channel NVR Kit with 24x 2 Megapixel IP Dome Cameras

Part No: NVR24PACK

The NVR24PACK is a professional network surveillance package. The NVR24PACK utilises the high quality VIP Vision interface and Video Analytic Software with features such as intelligent search and people/object counting. This NVR kit provides a comprehensive, two megapixel CCTV solution that can be scaled to fit any application.

The kit comes bundled with all components including hard drives (installed), power over ethernet switch (PoE) and cables.

Package Includes:

- (1x) 24 Channel H.264 Network Video Recorder
- (1x) 23" LED Monitor
- (5x) 2TB HDD for 10TB Total Capacity
- (8x) 2 Megapixel IP Vandal Proof Dome with 20m IR
- (16x) 2 Megapixel Vandal Proof Mini Dome
- (1x) 24 Port Managed Power over Ethernet Switch
- (24x) 30m CAT5 Network Cable / (1x) 1.5m CAT5 Network Cable

NVR SPECIFICATION

Video Compression Format	H.264 Video Compression
Max. Recording Frame Rate	30 FPS Global
Max. Display Frame Rate	'Real Time Display'
Backup Methods	Network Remote & USB Backup
Hard Drive Bays	5x SATA HDD (10TB Max)
Network Functionality	Live Monitoring, Remote Playback, File Backup Remote Configuration

CAMERA SPECIFICATION

VSIP2MPVDMINI	
Image Sensor	2.0 Megapixel 1/3" CMOS Sensor
Resolution	1600(H) x 1200(V)
Min. Illumination	0.5 Lux @ F1.2 Colour 0.1 Lux @ F1.2 B&W
Lens	4mm or 2.8mm Fixed Iris, F1.2
Supported Resolutions	1600 x 1200, 1280 x 720, 800 x 600, 704 x 576, 640 x 480, 528 x 384, 704 x 288, 352 x 288, 176 x 144
Frame Rate	25fps (704 x 576), 25fps (1280 x 720), 12.5fps (1600 x 1200)
Video Compression	H.264, MPEG-4, MJPEG
Housing	IP66
Dimensions	100(W) x 97(H) x 46.5(D)mm
Power	12VDC / PoE

CAMERA SPECIFICATION

VSIP2MPVDIR	
Image Sensor	2.0 Megapixel 1/3" CMOS Sensor
Resolution	1600 (H) x 1200 (V)
Min. Illumination	0.5 Lux @ F1.2
Lens	2.7-9mm, F1.2
Storage	Support SD/SDHC
Frame Rate	25fps(704x576), 25fps(1280x720), 12.5fps(1600 x 912) 12.5fps(1600x1200)
Video Compression	H.264
Housing	IP66
Dimensions	156 (Dia) x 135mm
Power	12VDC / PoE



VIP Vision 4/ 8/ 16/ 24 Channel IP NVR System

Part No: NVR04	(4 IP Licenses)
Part No: NVR08	(8 IP Licenses)
Part No: NVR16	(16 IP Licenses)
Part No: NVR24	(24 IP Licenses)

- >> **H.264 IMAGE COMPRESSION**
- >> **INCLUDES ANALYTIC SOFTWARE**
- >> **COMPATIBLE WITH IP CAMERAS FROM LEADING MANUFACTURERS SUCH AS SECURVIEW, SAMSUNG, ARECONT VISION AND ACTI PLUS ANY ONVIF COMPLIANT DEVICE:**

No matter the size or application, the VIP Vision range of IP NVRs are the ideal scalable surveillance system solutions. Like all the VIP Vision products, the IP NVRs utilise the high quality VIP Vision interface and Video Analytic software, which contains many intelligent features which help set the systems apart from competitor products. These features include dual monitor display for simultaneous real time audio/visual display and playback, the ability to manage up to 64 channels simultaneously with the VIP Vision CMS², optional POS and I/O integration for more effective system expansion and instant response functions to ensure that your system alerts you when an event occurs.

FEATURES

- Inbuilt High-Performance Analytic Software
- Features H.264 Hardware Compression
- Intelligent search in 5 ways
- Instant playback control
- Optional POS and I/O device integration
- GUI recording schedule
- Supported by VIP Vision Central Management Software
- Instant Response alerts you when alarm events occur
- Intelligent Video Analytic Functions: General Motion, Missing Object, Camera Occlusion, Foreign Object, Lose Focus and Signal Loss
- Compatible with a wide range of IP cameras from leading manufacturers, including Securview, Samsung, Arecont Vision and Acti
- Dual monitor display
- ONVIF Compatible

² CMS Sold Separately



VIP Vision Central Management System Server Software with 4 Clients Software

Part No: NUUO-SERVERSW individual Client Softwares
Part No: NUUO-CLIENTSW includes 4 Client Softwares

The VIP Vision NVR-Based Central Management System (CMS) is a powerful piece of server software, and is the best solution for large-scale and high level enterprise projects. The CMS allows you to manage all of the installed VIP Vision based systems from multiple sites. It supports all the VIP Vision product lines including the NVR Analogue and IP Kits and the NVRmini. The VIP Vision CMS supports unlimited cameras, servers and users. It has a powerful alarm management system and can control unlimited matrix viewing consoles in the centralized control room.

How It Works

The VIP Vision NVR CMS brings the traditional CMS system outside of the control room through internet access. Network based key operation systems can manage unlimited combinations of analogue and IP cameras, located worldwide, and operate them simultaneously via unlimited working stations. (Each working station requires its own client software)

FEATURES

- Authentic client-server architecture
- Centralised video management
- Advanced GUI alarm management
- Supports unlimited servers, cameras, I/O devices and POS
- Unlimited layers of E-Map
- Instant live-view and playback
- Unlimited display matrices for remote live view with PTZ and joystick control
- Supports H.264, MPEG4 and MJPEG compression
- Supports IP, Analogue, Megapixel cameras and video servers
- Supports audio from camera microphone inputs
- Alarm status, data mining and reporting function
- Remote backup



Additional IP Camera Licenses

Part No: NVR-IP01	(1 IP License)
Part No: NVR-IP04	(4 IP License)
Part No: NVR-IP08	(8 IP License)
Part No: NVR-IP12	(12 IP License)
Part No: NVR-IP16	(16 IP License)

These sets of IP Camera Licenses are available in 1, 4, 8, 12, 16 quantities. IP licenses are only for use with the Hybrid or NVR Base Kits up to a maximum of 24 IP Channels.



VIP VISION Digital Video Server

Part No: VSIPENCODER

- High performance DSP hardware compression
- H.264 video compression
- Dual streams
- Support variable bit rate and frame rate
- Embedded Linux OS
- Convert any analogue camera to IP



High Capacity Additional Network Attached Storage in 16 Bay 3RU Case

Part No: DVRNAS3RU16B

Designed to be used as additional high capacity storage for your NVR.
- Includes 500W PSU

Does not include a hard drive



VIP VISION USB to RS232/422/485 Converter

Part No: NVR-C08

External USB to RS232/422/485 converter.



VIP VISION 16 Channel Digital Output RS485 Module

Part No: NVR-C26

16 Channel external digital output module for a VIP VISION DVR or NVR. Product requires NUUO-C08 for operation.



VIP VISION 4 Channel In/Out RS485 Module

Part No: NVR-C28

4 Channel external digital input and 4 Channel output module for a VIP VISION DVR or NVR. Product requires NUUO-C08 for operation.



VIP VISION POS Converter - Inserter

Part No: NVR-C31

External POS Converter for VIP VISION DVR and NVR. Can interface with POS/ Cash Registers



VIP VISION 4 Port I/O Card (Alarms and Relays) Device with RS485 Port

Part No: NVR-G3IO

This is an internal 4 Channel Alarm In, Alarm Relay Out device for a Securview VIP VISION DVR.

UP TO **12x** HIGHER RESOLUTION THAN TRADITIONAL ANALOGUE CCTV

MEGAPIXEL CCTV SURVEILLANCE SYSTEM

Part No: NVR4ENTPACK

- Easy Plug-in Installation
- NVR with 1TB HDD
- Up to 2 Weeks Recording
- Watch Over the Internet
- USB & Network Backup
- Day & Night Operation



Compare Actual Footage! **Megapixel VS Analogue Camera Resolutions!**

The four 1.3 Megapixel Day/Night cameras bundled in this package have a maximum recording resolution of **1280 x 1024**. This is approximately **three times** the resolution of D1 (704 x 576) analogue cameras and **twelve times** that of CIF resolution (352 x 288). The resolving power of the Watchguard™ NVR4ENTPACK allows for greater surveillance area coverage, providing larger images and finer detail.





Watchguard 6 Channel HD NVR with 1TB Hard Drive and Camera Kit

Part No: NVR4ENTPACK

Utilising the latest H.264 video compression technology, the Watchguard NVR4ENTPACK complete surveillance package is ideal for a home or small business wanting to set up a digital surveillance system with network and remote access.

PACKAGE INCLUDED:

- 1 x 6 Channel H.264 DVR with 1 TB Hard Drive
- 4 x Day / Night IP cameras (20m IR range)
- 1 x PoE Network Switch
- 6 x Ethernet Connection Cables
- 2 x Switch Mode Low Voltage Power Supplies
- 1 x USB Mouse
- 1 x Infrared Remote Control
- 1 x HDMI Cable
- 4 x Highly Visible UV Resistant Window Warning Stickers



DVR SPECIFICATION

Video Compression Format	H.264
Recording Resolutions	1280x1024 1280x720 640x480 320x240
Max. Recording Frame Rate	30 FPS per camera
Max. Display Frame Rate	'Real Time Display'
Backup Methods	Network Remote & USB Backup.
Hard Drive Bays	2 x SATA HDD (4TB Max)
Network Functionality	Live Monitoring, Remote Playback, File Backup, Remote Configuration

CAMERA SPECIFICATION

Image Sensor	1.3 MP 1/4" Sony HR Image Sensor
Resolution	1280 x 1024
Lens	3.8mm@F1.5
Minimum Illumination	0 Lux (IR on)
Power	12VDC
Dimensions	151(L) x 68(W) x 68(H)mm
Power	12VDC / PoE



1.3 Megapixel Day/Night IP Bullet Camera

Part No: VSIP13B

With HD video, 20m IR vision and a weatherproof housing, the VSIP13B is a good all-rounder both indoors and outdoors, fitting into any surveillance needs you may have, for a low cost. This unit may be accessed over the network individually, or attached to the NVR4ENTPACK for more feeds in your security system.

Image Sensor	1.3 MP 1/4" Sony HR Image Sensor
Resolution	1280 x 1024
Lens	3.8mm @ F1.5
Minimum Illumination	0 Lux (IR on)
Compression	H.264
IR Range	20m
Dimensions	151(L) x 68(W) x 68(H)mm
Power	12VDC / PoE



1.3 Megapixel Day/Night IP Dome Camera

Part No: VSIP13D

The VSIP13D small, discreet IP dome camera for indoor use. This unit may be accessed over the network individually, or attached to the NVR4ENTPACK for more feeds in your security system.

Image Sensor	1.3 MP 1/4" Sony HR Image Sensor
Resolution	1280 x 1024
Lens	3.8mm @ F1.5
Minimum Illumination	0 Lux (IR on)
Compression	H.264
IR Range	10m
Dimensions	130 (H) x 90 (Dia) mm
Power	12VDC / PoE



6 Channel Network Video Recorder

Part No: NVR6ENT

The NVR6ENT is a network video recorder compatible with the VSIP13B bullet cameras that is accessible and monitorable over the network and internet. Capable of high resolution, low bandwidth video recording, this NVR will hold more than two weeks worth of footage.

The NVR can record up to 30 image frames per second per camera at 1.3 Megapixel resolution (1280 x 1024). You can adjust the recorder settings for both image quality and frame rate and when the HDD is full, the NVR will automatically record over the oldest footage. Video can be viewed from either a local machine or over the internet using a web interface or smartphone application. Backups can be made via USB flash or USB hard-drives



DVR SPECIFICATION

Video Compression Format	H.264
Recording Resolutions	1280x1024 1280x720 640x480 320x240
Max. Recording Frame Rate	30FPS per camera
Max. Display Frame Rate	'Real Time Display'
Backup Methods	Network Remote & USB Backup.
Hard Drive Bays	2 x SATA HDD (4TB Max)
Network Functionality	Live Monitoring, Remote Playback, File Backup, Remote Configuration

VIP VISION IP CAMERAS

VIP Vision 2.0 Megapixel
Day/Night IP Bullet Camera

Part No: VSIP2MPFBIR

- 12 fps @ 1600x1200 resolution / 15 fps @ 720p resolution
- H.264/MPEG-4 dual stream real time video compression
- 2.7-9mm F1.4 Varifocal Lens
- 101°~30.4° Angle of View
- Up to 32GB SD/SDHC local storage

Image Sensor	2.0 Megapixel 1/3" CMOS Sensor
Resolution	1600 (H) x 1200 (V)
Minimum Illumination	0 Lux (LED ON)/ 0.5 Lux (LED OFF)
Lens	2.7~9mm/F1.4/Auto Iris Lens
IR Range	20m
Video Compression	H.264
Housing	IP66
Dimensions	295x105x98mm (L x H x W)
Power	12VDC / PoE

VIP Vision 2.0 Megapixel
Vandal Proof Mini D/N
Network DomePart No: VSIP2MPVDMINI
Part No: VSIP2MPVDMINI2.8

- 2 Megapixel vandal-proof mini network dome
- Compact size for discrete installation and monitoring
- H.264/MPEG-4 dual stream real time video compression
- High resolution video preview: 1600 x 1200 pixels
- Day/Night functionality
- Supports PoE Power Supply
- IP66 weatherproof rating

Also available
in 2.8mm LensWall Mount Bracket Available:
Model No: VSIP2MPVDMINBKT

Image Sensor	2.0 Megapixel 1/3" CMOS Sensor
Resolution	1600(H) x 1200(V)
Min. Illumination	0.5 Lux @ F1.2 Colour 0.1 Lux @ F1.2 B&W
Lens	4mm or 2.8mm Fixed Iris, F1.2
Supported Resolutions	1600 x 1200, 1280 x 720, 800 x 600, 704 x 576, 640 x 480, 528 x 384, 704 x 288, 352 x 288, 176 x 144
Frame Rate	25fps (704 x 576), 25fps (1280 x 720), 12.5fps (1600 x 1200)
Video Compression	H.264, MPEG-4, MJPEG
Housing	IP66
Dimensions	100(W) x 97(H) x 46.5(D)mm
Power	12VDC / PoE

VIP Vision 2.0 Megapixel
IP Full Body Camera

Part No: VSIP2MPFB

- TI Davinci Hardware Compression.
- H.264 dual stream video compression
- 1 Channel Audio Compression.
- High Resolution Video Preview: 1600 x 1200 pixels.
- Supports HD720/4CIF/DCIF/2CIF/CIF/QCIF Real Time Compression.
- Supports Dual Stream Compression.
- Supported protocols: TCP/IP, UDP/IP, HTTP, FTP, SMTP, DHCP, DNS, DDNS, NTP
- Support E-PTZ Function.
- Supports Sensor Alarm Input and Relay Output.

* Lens not included

Image Sensor	2.0 Megapixel 1/3" CMOS Sensor
Resolution	1600 (H) x 1200 (V)
Min. Illumination	0.5 Lux @ F1.2
Lens	Not Included
Supported Resolutions	1600x1200, 1280x720, 800x600, 704x576, 640x480, 528x384, 704x288, 352x288, 176x144
Frame Rate	25fps(704x576), 25fps(1280x720), 12.5fps(1600x1200)
Video Compression	H.264 (Supports Dual Stream)
Housing	IP66
Dimensions	69 x 63mm x 157.5mm
Power	12VDC / PoE

VIP Vision 5.0 Megapixel
IP IR Dome Camera

Part No: VSIP5MPVDIR

- 5 Megapixel Vandalproof IR dome
- Automatic Day/Night functionality
- Supports PoE
- SD Card internal Storage
- Motion Detection
- H.264 or MPEG-4 Compression
- 4.5~10mm Varifocal Lens
- View with internet browser

Image Sensor	5.0 Megapixel 1/2.5" CMOS Sensor
Resolution	2560 (H) x 1920 (V)
Min. Illumination	0.6 Lux @ F1.2
Lens	4.5~10mm
Frame Rate	7 fps (2560x1920), 15 fps (2048x1536), 30 fps (1920x1080 1600 x 1200 1280x720)
Video Compression	H.264/MPEG-4
Housing	IP66
Dimensions	Φ140mm x 114mm
Power	12VDC / PoE

MEGAPIXEL IP CAMERA LENSES

Securview Manual Megapixel Lenses

Part No: VSLM6-12MM-MP3
Part No: VSLM-AV4.5-10MP5
Part No: VSLM-AV8-16MP5

VSLM6-12MM-MP3

6~12mm Varifocal Manual Iris 3MP Lens, 1/2"

VSLM-AV4.5-10MP5

- 4.5~10mm Varifocal Manual Iris 5MP Lens, 1/2" IR Corrected F1.6

VSLM-AV8-16MP5

- 8~16mm Varifocal Manual Iris 5MP Lens, 1/2" Ir Corrected F1.6

Securview Automatic Megapixel Lenses

Part No: VSLA3.5-8MP1
Part No: VSLA-AV4.5-10MP5

VSLA3.5-8MP1

3.5~8mm Varifocal Automatic Iris 1.3MP Lens, 1/2"

VSLA-AV4.5-10MP5

- 4.5~10mm Varifocal Automatic Iris 5MP Lens, 1/2" IR Corrected F1.6

Indoor

20M
IR Range

VIP Vision 2.0 Megapixel 20M IR Impact Resistant IP Dome Camera (Indoor)

Part No: VSIP2MPVDIRW



If you're looking for a true standalone surveillance system which doesn't require your cameras to be connected to a central storage device, our VIP Vision Infrared network dome camera is the answer. This camera supports internal SD card storage (up to 32Gb), meaning that all recorded footage is stored locally on the camera for retrieval at your convenience.

- Up to 2 Megapixel resolution
- 2.7~9mm Varifocal Wide Angle Lens
- High Resolution Video Preview: 1600 x 1200 Pixels.
- H.264/MJPEG video compression with high compression ratio
- Progressive scan CMOS
- Up to 32 GB SD/SDHC card local storage
- Two-way audio
- PoE: Power over Ethernet
- Footage can be reviewed on a PC without expensive CMS software
- 2 Megapixel image sensors ensure high quality footage
- Inbuilt storage system - no dedicated recording device necessary.
- Connect to a wireless router, access point or 3G modem to connect to the camera via a network

Image Sensor	2.0 Megapixel 1/3" CMOS Sensor
Resolution	1600 (H) x 1200 (V)
Min. Illumination	0.5 Lux @ F1.2
Lens	2.7~9mm, F1.6
Storage	Supports SD/SDHC
Frame Rate	15fps (1600x912), 25fps (1280x960), 30fps (1280x720)
Video Compression	MPEG-4 (Dual Stream Supported) / H.264
Housing	IP66
Dimensions	140 (Dia) x 114 (H) mm
Power	12VDC / PoE

Outdoor

20M
IR Range

VIP Vision 2.0 Megapixel 20M IR Vandal-Proof IP Dome Camera (Outdoor)

Part No: VSIP2MPVDIR



- TI Davinci Hardware Compression.
- H.264/MPEG4 Video Compression
- 2.7~9mm Varifocal Lens
- High Resolution Video Preview: 1600 x 1200 Pixels.
- Support for HD720/4CIF/DCIF/2CIF/CIF/QCIF Real Time Compression.
- Internet Browser support for Network Preview.
- Watermark function
- Day/Night Function with ICR and IR
- IP66 Vandal Resistant Housing

With a 2MP image sensor, 20M IR Range, H.264/MPEG4 dual-stream capabilities and Day/Night operation all housed in an impact-resistant dome, the VIP Vision VSIP2MPVDIR is a high-resolution solution to your indoor and outdoor surveillance needs.

Wall Mount Bracket Available:
Model No: VSIP2MPVDBKT



Image Sensor	2.0 Megapixel 1/3" CMOS Sensor
Resolution	1600 (H) x 1200 (V)
Min. Illumination	0.5 Lux @ F1.2
Lens	2.7~9mm, F1.2
Storage	Support SD/SDHC
Frame Rate	25fps(704x576), 25fps(1280x720), 12.5fps(1600 x 912) 12.5fps(1600x1200)
Video Compression	H.264
Housing	IP66
Dimensions	156 (Dia) x 135mm
Power	12VDC / PoE

PTZ
Camera

VIP Vision 1.3 Megapixel Network High-definition Speed Dome

Part No: VSIP1MPPTZ



- H.264 video compression
- The latest Davinci processing chip and platform
- Ethernet control and analog signal output
- View and control of video images via IE browser and client software
- SDHC card and SD card
- Dual stream technology
- Multiple network protocol support: TCP/IP, HTTP, DHCP, DNS, RTP/RTCP, PPPoE (FTP, SMTP, NTP, SNMP Addible)
- 1 audio input and 1 audio output

PTZ function:

- 360° endless pan range and -5°-90° tilt range
- 8 patrols, each patrol up to 32 presets
- 1 alarm input & 1 alarm output: provides alarm response actions of: preset, patrol, pattern, SD card recording, relay output, client notification
- 4 patterns, with the total recording time not less than 10 min
- Proportional zoom function, with rotation speed adjusted automatically according to zoom multiples

* 6" Outdoor Speed Dome Bracket Available
(Model No: VSIP1611ZJ)



Image Sensor	1.3 Megapixel 1/3" Sony Progressive Scan CCD
Resolution	1280 (H) x 960 (V)
Min. Illumination	0.1Lux/F1.6(Color), 0.01Lux/F1.6(B/W)
Lens	4.7~84.6mm, F1.6-F2.8
Storage	Supports SD/SDHC
Frame Rate	12.5fps(1280x960), 25 fps (1280x720), 25 fps (640x480)
Video Compression	H.264 and the latest Davinci processing chip
Housing	IP66
Dimensions	243 (Dia) x 287 (H) mm
Power	12VDC / PoE



Watchguard Flashview - 1.3MP Network Camera & Recorder with Video Alert Notification

Part No: VSPV13M

FLASHVIEW™ Video Alert Notification

A megapixel internet protocol camera that will let users stay connected and get video notification alerts on their smartphone. When movement is detected in the monitored area, it will automatically record and send an alert to the users. Users can immediately view the alert video and live stream via smartphone, iPad or PC (email).

- External alarm I/O device connection
- Microphone & speaker built-in for two-way audio transmission
- Complete Remote Surveillance Compatibility
- Micro SD card support for video storage



Image Sensor	1/3" Live MOS image sensor
IR Range	76° wide angle with 5m distance
Min. Illumination	0.1 Lux / F1.5, 0 Lux (LED ON)
Lens	f3.8mm / F1.5
Storage	Micro SD card (up to 32GB - depends on brand)
Frame Rate	25FPS
Video Compression	H.264 / MPEG4 / MJPEG
Dimensions	60 (W) x 90 (H) x 30 (D) mm (without bracket)
Power	12VDC



Watchguard Series DVRs

The Watchguard Range of Standalone DVRs are ideal for use in a home or small business, where the owner is after a high quality Digital Video Recorder with entry level functions. The DVRs all utilise H.264 Video Compression technology, multiple backup methods and a user friendly On-Screen Display (OSD). The OSD can be easily navigated by the user via the front of the DVR panel, operated wirelessly using the included IR remote control or by connecting the USB mouse.

Recorded video footage and images can be easily and quickly searched and viewed on the DVR. The DVRs all support smart-phone mobile surveillance on many popular mobile platforms. Supported platforms include Android, iPhone, BlackBerry & Windows Mobile. Remotely accessing the DVR through a network is supported via the licensed software "Video Viewer" and a supported internet browser. The DVRs are compatible with Internet Explorer, Mozilla Firefox and Google Chrome web browsers.

- H.264 video compression technology
- Resolutions: 704x576, 704x288, 352x288
- USB mouse control
- Intelligent motion recording
- Remote / mobile surveillance
- Live, record, playback, backup and network operation at the same time
- DVD*/USB & Network backup

* DVD Backup only available on DVRWG8ES and DVRWG16ES. 4 channel machine supports only 1 HDD.

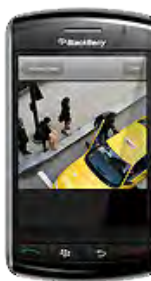


WATCH ON YOUR MOBILE!

The DVR is capable of offering mobile surveillance via many popular mobile platforms, supporting popular models such as iPhone, BlackBerry, WinCE, J2ME & Android.



iPhone



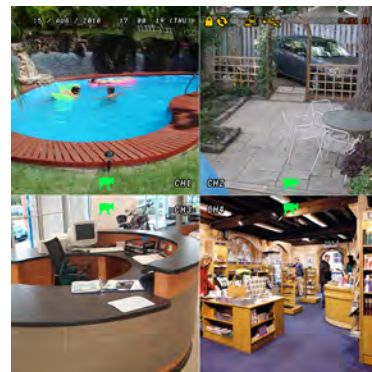
BlackBerry



Android



WinCE



Network surveillance

Network surveillance can be accessed via the licensed software "Video Viewer" or through a web browser. The DVRs support Internet Explorer, Mozilla Firefox and Google Chrome web browsers.



Logos and trademarks are the property of their respective owners.

Watchguard 4 Channel H.264 DVR 25fps @ 704x576

Part No: DVR4CHSOV7H264

Video Compression Format	H.264
Recording Resolutions	704 x 576, 704x288, 352x288
Max. Recording Frame Rate	100FPS Global @ DI (704x576)
Max. Display Frame Rate	100FPS 'Real - Time Display'
Backup Methods	Network Remote & USB Backup.
Hard Drive Bays	1 x SATA HDD (2TB Max)
Network Functionality	Live Monitoring, Remote Playback, File Backup, Remote Configuration


Part No: DVR8ENT2

The DVR8ENT is an eight channel standalone analogue DVR that is accessible and monitorable over the network and internet. Capable of high resolution, low bandwidth video recording, this NVR will hold more than two weeks worth of footage with a 1TB HDD (Not Included).

The DVR can record up to 200 image frames per second per camera at 700TVL. You can adjust the recorder settings for both image quality and frame rate, and when the HDD is full, the DVR will automatically record over the oldest footage. Video can be viewed from either a local machine or over the internet using a web interface or smartphone application. Backups can be made via USB flash or USB hard-drives

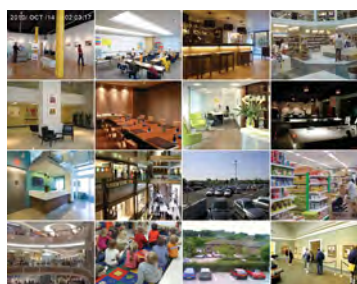

DVR SPECIFICATION

Video Compression Format	H.264
Recording Resolutions	704 x 576(50fps), 704 x 288 (100fps), 352 x 288(200fps)
Max. Recording Frame Rate	200FPS Global @ CIF 50FPS Global @ D1
Max. Display Frame Rate	'Real Time Display'
Backup Methods	Network Remote & USB Backup.
Hard Drive Bays	1 x SATA HDD (2TB Max)
Network Functionality	Live Monitoring, Remote Playback, File Backup, Remote Configuration


**8
CHANNEL**
**with
DVD burner**

**Watchguard 8 Channel H.264 DVR
50fps @ 704x576**
Part No: DVRWG8ES

Video Compression Format	H.264
Recording Resolutions	704 x 576(50fps), 704 x 288 (100fps), 352 x 288(200fps)
Max. Recording Frame Rate	200FPS Global @CIF 50FPS Global @D1
Max. Display Frame Rate	200FPS 'Real - Time Display'
Backup Methods	DVD/ Network Remote & USB Backup.
Hard Drive Bays	2 x SATA HDD (4TB Max)
Network Functionality	Live Monitoring, Remote Playback, File Backup, Remote Configuration


**16
CHANNEL**

**Watchguard 16 Channel H.264 DVR
100fps @ 704x576**
Part No: DVR16CHSOV6H264

Video Compression Format	H.264
Recording Resolutions	704 x 576(100fps), 352 x 288(400fps)
Max. Recording Frame Rate	400FPS Global @CIF 100FPS Global @D1
Max. Display Frame Rate	400FPS 'Real - Time Display'
Backup Methods	Network Remote & USB Backup.
Hard Drive Bays	2 x SATA HDD (4TB Max)
Network Functionality	Live Monitoring, Remote Playback, File Backup, Remote Configuration


**16
CHANNEL**

**with
DVD burner**

**Watchguard 16 Channel H.264 DVR
100fps @ 704x576**
Part No: DVRWG16ES

Video Compression Format	H.264
Recording Resolutions	704 x 576(100fps), 352 x 288(400fps)
Max. Recording Frame Rate	400FPS Global @CIF 100FPS Global @D1
Max. Display Frame Rate	400FPS 'Real - Time Display'
Backup Methods	Network Remote & USB Backup.
Hard Drive Bays	2 x SATA HDD (4TB Max)
Network Functionality	Live Monitoring, Remote Playback, File Backup, Remote Configuration



Watchguard Complete 4 Channel Watchguard H.264 DVR with 1TB Hard Drive and Camera Kit

Part No: DVR4ENTPACK5

Utilising the latest H.264 video compression technology, the Watchguard DVR4ENTPACK4 complete surveillance package is ideal for a home or small business wanting to set up a digital surveillance system with network and remote access.

PACKAGE INCLUDED:

- 1 x 4 Channel H.264 DVR with 1 TB Hard Drive
- 4 x Day / Night camera (10m IR range)
- 4 x Camera Connection Cables
- 2 x Switch Mode Low Voltage Power Supplies
- 1 x Monitor Connection Cable
- 1 x Network Cable (Optional Use)
- 1 x Power Split Cable
- 4 x Highly Visible UV Resistant Window Warning Stickers



DVR SPECIFICATION	
Video Compression Format	H.264
Recording Resolutions	704 x 576, 704x288, 352x288
Max. Recording Frame Rate	100FPS Global @DI
Max. Display Frame Rate	100FPS 'Real - Time Display'
Backup Methods	Network Remote & USB Backup.
Hard Drive Bays	1 x SATA HDD (2TB Capacity)
Network Functionality	Live Monitoring, Remote Playback, File Backup, Remote Configuration

CAMERA SPECIFICATION	
Image Sensor	1/4" Colour CCD
Horizontal Resolution	480 TVL
Lens	f3.6mm@F2.0
Minimum Illumination	0 Lux (IR on)
Power	12VDC
Dimensions	56(L) x 76(W) x 65(H)mm



NEW!

Watchguard Complete 8 Channel Watchguard H.264 DVR with 1TB Hard Drive and Camera Kit

Part No: DVR8ENTPACK2

Utilising the latest H.264 video compression technology, the Watchguard DVR8ENTPACK complete surveillance package is ideal for a home or small business wanting to set up a digital surveillance system with network and remote access.

PACKAGE INCLUDED:

- 1 x 8 Channel H.264 DVR with 1TB Hard Drive
- 4 x Colour Dome Cameras
- 4 x Day / Night camera (10m IR range)
- 1 x USB Mouse
- 8 x Camera Connection Cables
- 2 x Switch Mode Low Voltage Power Supplies
- 1 x Monitor Connection Cable
- 1 x Network Cable (Optional Use)
- 2 x Power Split Cable
- 4 x Highly Visible UV Resistant Window Warning Stickers



DVR SPECIFICATION	
Video Compression Format	H.264
Recording Resolutions	704*576
Max. Recording Frame Rate	200FPS Global
Max. Display Frame Rate	200FPS 'Real - Time Display'
Backup Methods	Network Remote & USB Backup.
Hard Drive Bays	1 x SATA HDD (2TB Capacity)
Network Functionality	Live Monitoring, Remote Playback, File Backup, Remote Configuration

IR CAMERA SPEC	
Image Sensor	1/4" Colour CCD
Horizontal Resolution	480 TVL
Lens	f3.6mm@F2.0
Minimum Illumination	0 Lux (IR on)
Power	12VDC
Dimensions	56(L) x 76(W) x 65(H)mm

DOME CAMERA SPEC.	
Image Sensor	1/4" Colour CCD
Horizontal Resolution	480 TVL
Lens	3.6mm / F2.0 (optional) Board Lens
Minimum Illumination	0.8 Lux
Power	12V DC
Dimensions	118 (Dia) x 74(Dia)mm

sales@rhino.com.au - www.rhino.com.au - 02 9671 6711

Incredible Value & Performance !!

SECURVIEW™ XR Series

The Securview™ XR Professional CCTV Camera Range is built with Sony Super HAD CCD technology!



Genuine Sony Super HAD interline CCD image sensors and the latest Digital Signal Processing (DSP) with Dynamic Digital Noise Reduction (DDNR) Technology. The XR Series displays unrivalled image qualities of up to 690TVL in colour, but also a complete feature-list of functions unsurpassed by cameras more than twice their value!

RhinoCo warrants to the original wholesale purchaser / installer that any XR Series camera will be free from defects in material and workmanship under normal use and service. RhinoCo at its option, shall repair or replace any defective unit returned with the same or equivalent model covered by this warranty. This limited lifetime warranty is non-transferable and is in addition to RhinoCo's Standard Terms of Sale available from: <http://www.rhinoco.com.au/terms>

XR SERIES CAMERAS



SECURVIEW™ XR Series

Securview XR Series 600TVL 1/3" Day/Night 40M IR Outdoor Camera

Part No: VSXR-4040IR

The VSXR-4060FIR utilises a 1/3" Sony Super HAD CCD image sensor, capable of producing images at a resolution of 600TVL. The camera has a 0.1 Lux colour low light level, and a 0 lux level when the IR LEDs (54 Pcs) are active. The IR LEDs have an operating range of approximately 40m.

Image Sensor	1/3" SONY Super HAD
Horizontal Resolution	600TVL
Lens	2.8 ~ 12mm
Minimum Illumination	0.1 Lux Colour/0.0001 Lux Sens-Up/0 Lux IR on
Infrared Range	40m
Power	12VDC
Dimensions	88(W) x 95(H) x 124(D)



SECURVIEW™ XR Series

Securview XR 1/3" 560TVL Day/Night Ultra Wide Dynamic Full Body Camera

Part No: VSXR-600FW

The VSXR-600FW is a part of the Securview XR series. It is a high-resolution, wide-dynamic body camera making it ideal for usage in indoor applications or in applications of low or varying light levels. The camera utilises a Samsung Techwin SV4 chipset, producing quality colour images at a resolution (560TVL), higher than other CCTV cameras.

* Lens not included

Image Sensor	1/3" Sony Interline Double Density CCD
Horizontal Resolution	560TVL (Colour)/700TVL (B&W)
Lens	N/A
Minimum Illumination	0.3 Lux @ F1.2 (Colour)/0.001 Lux @ F1.2 (Sens Up)
Power	12VDC, 24VAC
Dimensions	61(W) x 55(H) x 104(D)mm



Securview XR 1/3" 690TVL Day/Night Wide Dynamic Vandal-Proof Dome

Part No: VSXR-5430DV

A part of the Securview XR series, the VSXR-5430DV is a high-resolution (690TVL) dome camera. Featuring an advanced Pixim Seawolf image sensor and 30m IR vision, this vandal proof dome camera will provide you with high quality surveillance footage at any time of the day. The 2.8~12mm varifocal auto-iris lens allows the camera's field of view to be easily adjusted to suit the current application.

Image Sensor	1/3" Pixim Seawolf
Horizontal Resolution	690TVL
Lens	2.8~12mm DC Auto Iris
Minimum Illumination	0.0008 Lux @ F1.2 (Colour)/0.002 Lux @ F1.2 (Sens Up)
Power	12VDC, 24VAC
Dimensions	150 x 97mm (WxH)



Securview XR Series 680TVL Day/Night Mini Vandal-Proof Dome Camera

Part No: VSXR-708DV

The VSXR-708DV Mini Vandal-proof Dome uses a Sony Ex-View HAD CCD II Image Sensor to produce extremely high quality images of 680TVL horizontal resolution. It has a Japanese 2.8~12mm Auto Iris Lens and the Day/Night capabilities of the camera ensure it can be reliably used in both internal and external surveillance applications.

Image Sensor	1/3" SONY Ex-View HAD CCD II
Horizontal Resolution	680TVL
Lens	2.8~12mm Auto Iris
Minimum Illumination	Colour: 0.03 Lux., Sens-up: Auto (4x)
Power	12VDC
Dimensions	112 (Dia) x 83 (H)mm



Securview XR Series 600TVL 1/3" Day/Night 30M Infrared Vandal Dome

Part No: VSXR-581DVIR

- Sony 1/3" Super HAD CCD
- High Resolution (up to 600 HTVL)
- 30m Infrared Range
- Dual Voltage
- Low 0.1 Lux. (CDS On B/W Mode : 0.00 Lux.)
- Varifocal Zoom Lens 2.8~12mm (32X Digital Zoom)
- Weather-proof (IP66), OSD (On Screen Display)

Image Sensor	1/3" Sony Super HAD CCD
Horizontal Resolution	600TVL
Lens	2.8~12 mm DC Auto iris lens (32x Digital Zoom)
Minimum Illumination	Color : 0.1 Lux., (CDS ON : 0.00 Lux.)
Power	12 V / 24VAC
Dimensions	150 x 97mm (WxH)

DOME CAMERAS

Securview 1/4" Entry Level Dome Camera - 480TVL

Part No: VSTP101AV



This entry level colour dome camera is ideal for those who want a ceiling mounted dome camera for general scene surveillance. It provides good picture quality and has a stylish low profile design.

Image Sensor	1/4" Colour CCD
Horizontal Resolution	480 TV Lines
Lens	3.6mm Board
Minimum Illumination	0.5 Lux @ F2.0
Power	12V DC
Dimensions	60(H) x 100(Ø) mm



Securview 1/3" Vari-Focal Dome Camera - 600TVL

Part No: VSTP482

Featuring a high resolution of 600TVL, and a high sensitivity in a dark environment (0.05 Lux @ F1.4), this is ideal for a multitude of surveillance applications. The camera includes a 3.8~9.5mm vari-focal lens.

Image Sensor	1/3" color CCD sensor with SONY Effio DSP
Horizontal Resolution	600TVL
Lens	f3.8mm ~ f9.5mm / F1.4
Minimum Illumination	0.05 Lux / F1.4
Power	12VDC
Dimensions	140 (Dia) x 90 (H)mm



Watchguard 1/3" Day/Night Varifocal 40M IR Dome 700TVL

Part No: VSDVF40MIR700



40M IR Range

The VSDVF40MIR700 is a waterproof IR Dome Camera Vandal Proof casing. It gives a crisp, clear picture quality in both day and night conditions and has an Infrared viewing distance of 40 metres.

Image Sensor	1/3" SONY Colour CCD
Horizontal Resolution	700TVL
Lens	4~9mm Manual Varifocal Lens
Minimum Illumination	0 Lux (IR On)
Power	12VDC
Dimensions	280 x 185 x 160mm (HxWxD)



Watchguard 1/3" Day/Night Varifocal 30M IR Camera - 700TVL

Part No: VSWVF30MIR700



30M IR Range

Ideal for 24hr outdoor monitoring, the VSWVF30MIR700 is a cost-effective surveillance method. The camera has a 1/3" Sony CCD, a horizontal resolution of 700TVL, a minimum illumination of 0 Lux, IP66 rating and a 2.8~12mm Manual lens.

Image Sensor	1/3" Sony CCD
Horizontal Resolution	700 TVL
Lens	2.8~12mm Manual Zoom Lens
Minimum Illumination	0 Lux/F1.4 (LED ON)
Power	12V DC
Dimensions	256x86x143mm (L x H x D)



Securview 1/3" Day/Night Varifocal 50M IR Dome Camera 600TVL

Part No: VSDVF50MIR5-15



50M IR Range

The VSDVF50MIR5-15 is a vandal proof dome camera designed for both indoor and outdoor applications. It has a high quality 1/3" Sony Colour CCD image sensor with 600TVL resolution providing a high picture quality. The camera has 54 Infrared LEDs with an IR range 50M maximum, providing a crisp clear picture quality in both day and night conditions. The camera's field of view can be easily adjusted utilising the 5~15mm Vari-Focal Lens. IP66 rated weatherproof.

Image Sensor	1/3" SONY Colour CCD
Horizontal Resolution	600TVL
Lens	5-15mm Manual Varifocal Lens
Minimum Illumination	0 Lux (IR On)
Power	12VDC
Dimensions	150 x 150 x 140mm (WxDxH)



Securview 1/3" Day/Night Varifocal 50M IR Camera - 600TVL

Part No: VSWVF50MIR4-9-600



50M Indoor IR Range

The VSWVF50MIR4-9-600 is a weather proof IR camera with a 360° rotational vandal proof bracket. The cable management design is built into the bracket, protecting the cable from environmental damage and vandalism. The camera has a maximum infrared range of 50M, providing a crisp clear picture quality in both day and night conditions.

The camera comes with a sun-shield housing and aluminium bracket rated at IP65.

Image Sensor	1/3" Sony CCD
Horizontal Resolution	600TVL
Lens	4~9mm Manual Vari-Focal Lens
Minimum Illumination	0.1 Lux
Power	12VDC
Dimensions	160 x 100 x 97mm (DxHxW)

BULLET CAMERAS



Securview 1/3" 3.6mm 15M IR Camera - 480TVL

Part No: VSTP136BIR



15M IR Range

The VSTP136BIR is an outdoor camera with 15M IR range and 480 TVL. It has 14 in-built IR LEDs, giving the camera high visibility and clarity in both day and night applications. The weatherproof outdoor housing is Standards Approved, rated IP67, and is very easy to install.

Image Sensor	1/3" Colour CCD image sensor
Horizontal Resolution	480 TVL
Lens	f3.6mm@F2.0
Minimum Illumination	0.3 Lux@F2.0, 0 Lux (IR on)
Power	12VDC
Dimensions	116.13(L) x 60(W) x 79.58(H)mm



Securview 1/3" Day/Night Varifocal 50M IR Camera - 600TVL

Part No: VSWVF50MIR9-22



50M Indoor IR Range

This Vandal-proof IR camera has a high quality 1/3" Sony Super HAD CCD image sensor and a 600TVL resolution. It has 36 IR LEDs, making it ideal for use in day and night applications, and the IP55 rated vandal/water proof housing allows it to be used for indoor or outdoor purposes. The camera has an indoor IR range of 50M, and an outdoor range of 30M. The fully articulated bracket allows for 360° rotation when positioning the camera, making it ideal for a multitude of versatile applications.

Image Sensor	1/3" SONY Super HAD CCD
Horizontal Resolution	600TVL
Lens	9~22mm Manual Varifocal Lens
Minimum Illumination	0 Lux (IR On)
Power	12VDC
Dimensions	160 x 100 x 97 (DxHxW)



Watchguard 1/3" Day/Night 15M IR Camera - 600TVL

Part No: VSWFF15MIR



15M IR Range

Designed for outdoor monitoring during the day and night, this 15M IR body camera is a cost-effective surveillance solution. It has a 1/3" Sony Effio CCD image sensor, horizontal resolution of 600TVL, a 3.6mm board lens and is water-resistant rated IP67.

Image Sensor	1/4" Sony Effio CCD
Horizontal Resolution	600 TVL
Lens	Board Lens 3.6mm/F2.0
Minimum Illumination	0 Lux/F2.0 (LED ON)
Power	12V DC
Dimensions	256(W) x 86(H) x 143(D)mm

PTZ SPEED DOME CAMERAS (COLOUR)

NEW!**Securview High-Speed Dome with 18 x Zoom****Part No: VSPTZ55**

A high speed day/night with 216 x zoom (18 x Optical Zoom, 16 x digital zoom), with AWB/ATW white balance, the VSPTZ55 is a powerful surveillance tool. It can be operated by any PTZ capable joystick controller or DVR, with positioning speeds of 300°/s Pan and 150°/s Tilt. Capable of 4 patrol routines and 128 programmable positions, and IR monitoring at 0.01 lux at high resolution 530TVL. All of these configuration are accessible via the easy to use on board display.

Image Sensor	1/4" EX-View HAD CCD
Horizontal Resolution	530 TVL
Lens	4.1mm to 73.8mm (F1.6~F2.4)
Minimum Illumination	0.01 Lux @F1.4
Power	24VAC/2Amp
Dimensions	220(H) x 1340(Dia) mm

NEW!**Securview High-Speed Dome with 23 x Zoom****Part No: VSPTZ55WDN**

This high speed PTZ dome camera features 23 x optical zoom plus 16 x digital, 560TVL high resolution with automatic AWB/ATW white balance. The camera uses RS485 PELCO-D / P to communicate and can be controlled by either a compatible joystick controller or DVR. There are four alarm inputs that can be linked to preset camera positions and one alarm output. Other features include automatic tracking and patrol modes, 128 preset positions and positioning speeds of 300° per second pan and 150° per second tilt.

Image Sensor	1/4" Super HAD CCD
Horizontal Resolution	560 TVL
Lens	3.5mm to 80.5mm (F1.6~F2.4)
Minimum Illumination	0.2 Lux @F1.4
Power	24VAC/2Amp
Dimensions	280(H) x 200(Dia) mm

PTZ ACCESSORIES

**Full Featured Speed Dome Controller****Part No: VSPTZKB**

Speed Dome Controller with Keyboard and Joystick, Controls up to 32 Speed Dome Cameras, RS485 Multi Protocol, with LCD Display.

- 0~255 address range for camera & decoder
- Up to 128 preset positions and 6 cruising tracks
- Manual or automatic camera controller
- Manual control of focus, zoom & lens iris
- 12VDC

**CCTV Warning Stickers (4 pack)****Part No: VSCDSC**

Pack includes 4 130x100mm Rear Adhesive CCTV Warning Stickers

CCTV SURVEILLANCE SIGNS

**Warning Sign - A4 Size Blue Print on Corflute****Part No: VSA24**

These weatherproof / UV resistant warning signs help to increase the overall effectiveness of surveillance systems acting as a deterrent to would be criminals.

- Dimensions: 212(W) x 299(H) x 4(D)mm

**CCTV Warning Sign Corflute A3 Size****Part No: VSCDCC**

A3 sized (420 x 297mm) CCTV Warning Sign, designed for display in a prominent position to act as a deterrent to would-be criminals. The sign is weatherproof and UV resistant.

**CCTV Warning Stickers (4 pack) A4 Size****Part No: VSCDSC**

Pack includes 4 A4 sized CCTV Warning Stickers.

2 x Rear Adhesive Stickers for use on flat surfaces

2 x Front Adhesive Stickers for use on interior windows

IR ILLUMINATOR

NEW!**100 Metre Infrared Illuminator****Part No: VS-IR12**

- 12PCS LED
- 100m IR Distance
- 10° Angle
- Operation Temperature: -10°C ~ 50°C
- Weight: 700g
- W90 x H95 x D100mm

NEW!**150 Metre Infrared Illuminator****Part No: VS-IR18**

- 18PCS LED
- 150m IR Distance
- 10° Angle
- Operation Temperature: -10°C ~ 50°C
- Weight: 700g
- W90 x H95 x D100mm

NEW!**160 Metre Infrared Illuminator****Part No: VS-IR160**

This infrared LED lamp will provide illumination up to 160 metres at an angle of 40 degrees.

ANALOGUE CAMERA LENSES

**2.8-12mm DC Varifocal Auto Iris Lens****Part No: VSLA2.8-12DC**

For indoor or outdoor use where light levels vary constantly and optimum performance is required under all light conditions. Includes the ability to adjust the field of view (wide to telescopic angles).

**6-60mm DC VariFocal Auto Iris Lens****Part No: VSLA6-60DC**

For indoor or outdoor use where light levels vary constantly and optimum performance is required under all light conditions. Includes the ability to adjust the field of view.

**2.8-12mm Varifocal Manual Iris Lens****Part No: VSLM2.8-12**

For indoor use. Ability to finely adjust lens aperture and focus for superior picture quality. Includes the ability to adjust the field of view.

CAMERA ACCESSORIES

**RF Modulator for Surveillance Cameras****Part No: VSARFMOD**

This unit allows the connection of a CCTV camera with or without sound to a TV that has a TV aerial socket / RF socket. It has 2 RCA plugs. 1 x video, 1 x audio and a DC socket for a 12VDC power supply (100mA).

**4 Way Video Distribution Amplifier - Split 1 Video Signal Into 4****Part No: VS-CA17**

- For splitting 1 video signal into 4 without Signal Loss
- 1 x Composite Video Input
- 4 x Composite Video Outputs
- Power: 240 VAC

**Composite (BNC / RCA) to VGA Converter****Part No: VID2VGA**

- Converts Composite to VGA
- Output Resolution up to 1280 x 1024 @ 60Hz
- Allows Use of Cost Effective PC / VGA Monitors with DVRs
- Includes 12VDC Power Supply

**Audio Microphone with Pre-Amp****Part No: VSAMICV2**

- Add-on mini audio microphone, for all cameras that require an audio function
- The microphone is designed to be mounted next to the camera.

Features:

- High sensitivity microphone
- Audio output 2Vp-p (max)
- Power requirement 12VDC @ 10mA

**Inline Add-on Audio Microphone****Part No: VSAMIC**

- Inline Add-on Mini Audio Box
- Designed for use on all cameras
- Connect directly to the camera and monitor/DVR

Features

- High sensitivity microphone
- Audio output 2Vp-p (max)
- Power requirement 12VDC @ 10mA
- Dimension 48 x 15 x 9mm (audio box)

CAMERA HOUSINGS & BRACKETS


Weatherproof Camera Housing with Bracket - Suitable For Cameras No Larger Than: 76(W) x 72(H) x 260(L)mm
Part No: VSGL606

This housing has been IP66 certified and is constructed from light weight solid weatherproof aluminum making this housing ideal for outdoor use.

- Suitable for cameras no larger than: 76(W) x 72(H) x 260(L) mm
- Dimensions of housing: 113(W) x 106(H) x 410(L) mm


Weatherproof Camera Housing with Bracket - Suitable For Cameras No Larger Than: 76(W) x 62(H) x 220(L)mm
Part No: VSQA13

Constructed from light weight solid weatherproof aluminium, this housing is ideal for outdoor use.

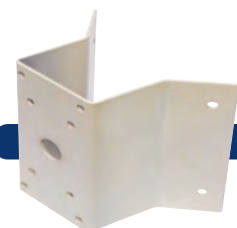
- Suitable for cameras no larger than: 76(W) x 62(H) x 220(L) mm
- Dimensions of housing: 110(W) x 100 (H) x 340 (L) mm


Swivel & Tilt Short Metal Camera Bracket - 100(L)mm
Part No: VSQA11

- Swivel & tilt metal camera bracket
- Dimension of bracket: 100(L)mm


Swivel & Tilt Plastic Camera Bracket - 150(L)mm
Part No: VSQA9

- Swivel & tilt plastic camera bracket, off-white colour
- Dimensions of bracket: 150(L) mm


Outside Corner Bracket - For use with VSPTZHOUSINGEX only
Part No: VS15-05BM

- Waterproof bracket suitable for mounting your camera externally in corners.
- For use with VSPTZHOUSINGEX only


Classical Camera Housing - Suitable For Cameras No Larger Than: 90(W) x 70(H) x 230(L)mm
Part No: VSTPH-1000

This housing is constructed from extruded aluminum and is powder coated and stove finished. The design and manufacture is to the highest technical standard with environmental protection to level IP 66. The housing is supplied with an adjustable cable managed mounting bracket.

- Suitable for cameras no larger than: 90 (W) x 70 (H) x 230 (L) mm
- Dimensions of housing: 110(W) x 100 (H) x 340 (L) mm

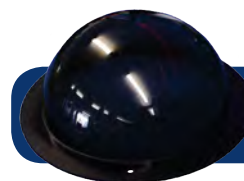

Generic Pole Bracket
Part No: VS15-CD04BV

- Allows camera mounting on poles with adjustable fixing bands
- The bracket suits the following pole's dimension: 110-150mm
- Maximum load 40KG


Outdoor Housing & Pendant Set
Part No: VSPTZHOUSINGEX

This heavy duty dome housing is constructed from 1.6mm powder coated aluminum. A versatile camera mounting bracket allows the correct positioning of the camera lens. 180mm is the recommended maximum length of the camera and lens combination.

- Dimensions of housing: 275(W) x 330(H) mm (including wall bracket)


Tinted Dome Covers 8" - 12" - 14"

Part No: VSTD8 (8" Cover)
Part No: VSTD12 (12" Cover)
Part No: VSTD14 (14" Cover)

Available in 8"/12"/14"(Dia.)



Professional 19 Inch /3U Rack Mount PC/DVR Case

Part No: DVRCASE3
Part No: DVRCASE3RUNAS

This professional 19" rack mount PC/DVR case comes supplied with all the cabling required to connect your components.

- 3U rack mount chassis
- Power supply not included

Also available in a 16 Bay Rack Mount!



High Performance 16 Bay Storage Server

Part No: DVRSERVER3RU16B

RhinoCo Technology proudly presents this Securview 16 Bay storage/server. This model is built to handle high volume data response in an ultra cool thermal environment that maximizes storage server possibilities, making it ideal for security applications as an operating server or networked attached storage. This range supports redundant power supplies, up to 50 bays of hot-swap hard drives, hot-swap fans and Dual/Quad Intel® Xeon™ and AMD® Opteron™ server board. Featuring all server-grade dedicated hardware such as Intel Xeon CPU, Intel main board, and solid-state OS hard drives, SAS or SATA storage options, RAID (0,1,5,6,10) configurations support, this system is flexible enough to meet all your storage requirements from 10 - 100TB per server. Designed and built by RhinoCo Technology in Australia, it is also backed up by comprehensive local hardware and technical support.

- Single Channel License for Securview Exacqvision NVRs

² Upgradable to 2 x 2 TB

³ Analogue Max. D1 / IP Mega Pixel Recording Rate is camera dependent

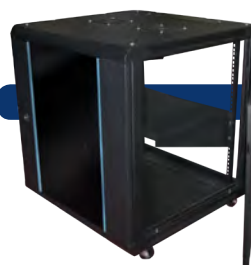
Drive Bays	16 x 3.5" Hot Swap, 2 x 2.5" internal, 1 x Slim CD, 1 x Slim FDD
Ventilation	3 x 9cm Fans, 2 x 6cm Fans
Backplane	SAS, SATA or SATA 3.0Bb/s interface
RAID	LSI 16 Port RAID Config 0, 1, 5, 6, 10
CPU	Intel Xeon(R) Quad Core X3430 or above
RAM	4GB DDR3 or above
Server Board	Intel(R) Server Board S3000 series
NIC	Dual GbE
OS	Ubuntu
Hard Drive	64GB Kingston SSD
USB	10 x USB 2.0
Power	600W Fixed or Redundant PSU with warning indicator
Dimensions	480 (W) x 130.5 (H) x 710 (D)mm

Hard Disk Drives

Part No: HD1TBS (1TB HDD)
Part No: HD2TBS (2TB HDD)



No matter what your recording needs are, RhinoCo Technology supply a range of Hard Disk Drives to meet your requirements.



High Quality Professional 12 Unit Rackmount Cabinet

Part No: RACKMOUNTCAB12

- Size: 12RU 600mm x 450mm x 650mm (W x D x H)
- Glass front door with deluxe lock
- Removable metal side panels for easy access
- 1 x 12cm Cooling fan
- 4 Outlet Universal power adaptor sockets



High Quality Professional Rackmount Cabinets

Part No: RACKMOUNTCAB18 (18RU)
Part No: RACKMOUNTCAB27 (27RU)
Part No: RACKMOUNTCAB37 (37RU)

Available in 3 Sizes:

- 18RU (W600 x D450 x H800mm)
- 27RU (W600 x D800 x H1400mm)
- 37RU (W620 x D800 x H1800mm)

- Glass front panel with deluxe lock
- Metal side panels
- Metal rear door with lock
- Inbuilt cooling fans
- 4(18RU) & 6 outlet universal power adaptor sockets
- Base with four twin castor wheels (2 with brakes) stands also available

DVR & PC DISPLAY MONITORS

**19" LCD Monitor with LED Backlighting****Part No: LCD19LED**

With CCTV monitors being left on 24 hours a day, 7 days a week, it is now more important than ever to make sure you are getting value for money. LED backlit monitors use less energy and last longer, saving you money on your electricity bill and eventual replacements.

Specifically designed for the CCTV industry with HDMI, VGA and BNC video inputs. Highest Brightness - Highest Definition. Less Electricity - Longer Life.

- Resolution: 1280x1024
- Size: 19"
- Video Inputs 1xHDMI / 1xVGA / 2xBNC

**Widescreen LG monitors - 19"/23"**
Part No: LCDLG19W
Part No: LCDLG23W

When you have a large number of cameras to keep tabs on, screen real estate becomes an issue. These large widescreen monitors will provide you with a clear view of all your feeds, and allow you to fit more cameras onto the screen without fear of poor visibility.

High resolution with a contrast ratio of 30,000:1 and 16.7 million colours, you can be sure that these monitors will always give you an optimal viewing experience without missing a thing.

Screen	LCDLG19W	LCDLG23W
Size	19"	23"
Resolution	1366x768	1920x1080
Aspect Ratio	16:9	16:9
Response Time	5ms	5ms

MONITOR BRACKETS

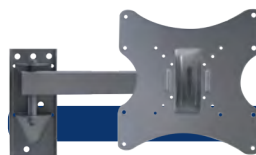
**LCD / TFT Screen Wall-Mount Bracket****Part No: TFTBRACKETSAMSW**

Wall-mount bracket for large monitors.

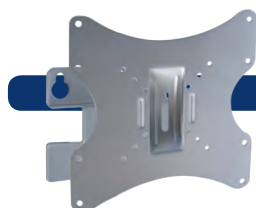
- FIT screen size: 15" ~ 25"
- Tilt: -15 to +15 degree
- Max Loading weight: 20 kgs(44lbs)
- Distance to wall: 150-385mm
- VESA: 75/100

**VESA Standard Ceiling Mount LCD Bracket****Part No: VSCACMB**

- Standard VESA 50/75/100
- Adjustable drop 500-850mm
- Easy to install
- Max load 20kg

**LCD/TFT Screen Wall-Mount Bracket with Tilt / Swivel****Part No: TFTBRACKETSW**

- Std VESA 50/75/100/200/100x200
- Tilt/Swivel Adjustments
- Max Load 30kg

**LCD/TFT Screen Wall-Mount Bracket with Tilt****Part No: TFTBRACKET**

- Std VESA 50/75/100/200/100x200
- 90 degree horizontal swing, + 20 degree vertical tilt
- 100mm Spacing
- Max Load 30Kg



3.5G Wireless Hotspot with SIM

SAP-MB-1112



Create instant wireless or wired 3.5G hotspots at remote locations (such as construction sites, special occasions, conventional centres, vehicles, or where DSL/cable is not available).

Use it as wireless access point at home to extend wireless coverage. It can function as a wireless USB server for several devices at the same time. No settings required, just plug and play for printer sharing, remote printing, real time and online monitor, scheduled recording and file sharing via FTP or SMB. Includes an internal backup battery for handling power interruptions.



ADSL2/2+ Wireless Modem Router with 4 x 10/100 LAN Ports

SAP-RM-1802



- ADSL2/2+ (Annex A/I/J/L/M)
- 1 x RJ-11 ADSL Port
- 4 x RJ-45 10/100Mbps Lan Ports
- 802.11n (150Mbps) Wireless Access
- WEP / WPA / WPA2 Security
- WDS Configuration
- Integrated Firewall



2.4Ghz Wireless Router with 4 x Gigabit LAN and 1 x WAN

SAP-RB-1733



- 1 x RJ-45 10/100/1000Mbps WAN Port
- 4 x RJ-45 10/100/1000Mbps Lan Ports
- 1 x USB 2.0 (for External 3G/4G modem)
- 802.11n (300Mbps) Wireless Access
- WEP / WPA / WPA2 Security
- WDS Configuration
- Integrated Firewall
- 1000mW Transmission Power



2.4/5.8Ghz Wireless Router with 4 x Gigabit LAN and 1 x WAN

SAP-RB-1830



- Dual Band 2.4/5.8Ghz Transmission
- 1 x RJ-45 10/100Mbps WAN Port
- 4 x RJ-45 10/100/1000Mbps Lan Ports
- 1 x USB 2.0 (for External 3G/4G modem)
- 802.11n (300Mbps) Wireless Access
- WEP / WPA / WPA2 Security
- WDS Configuration
- Integrated Firewall



Ethernet Switches without Power over Ethernet

Model	Lan Ports	Speed (Mbps)
SAP-HG-3105	5	1000
SAP-HG-3216	16	1000
SAP-HG-3224	24	1000



Ethernet Switches with Power over Ethernet

Model	Lan Ports	Speed (Mbps)
VS8PORTPOE	8	10/100
SRW208P	8	10/100 (1000 Uplink)
SRW224G4P	24	10/100 (1000 Uplink)

- Connect up to 24 network devices-PCs, printers, access points, and servers to share and transfer files and videos across your network
- Tap into your network's existing high speeds using a flexible high-speed uplink connection Power over Ethernet powers up to 12 attached devices for increased placement option
- 24 10/100, 4 10/100/1000 with 2 miniGBIC combo



Cat5e Ethernet Cables in Various Lengths

Part No: CABLELAN1.5M
Part No: NETCABLE10
Part No: NETCABLE20
Part No: NETCABLE30

High quality Cat5e ethernet cables suitable for IP cameras and PoE devices. Available in 1.5m, 10m, 20m, and 30m lengths.



Single Port Power Over Ethernet (PoE) Injector

Part No: WT-CAT5POEI

This Ethernet line in Power Over Ethernet Injector provides 48VDC power and up to 100Mbps data transfer rate through a standard CAT5 cable.

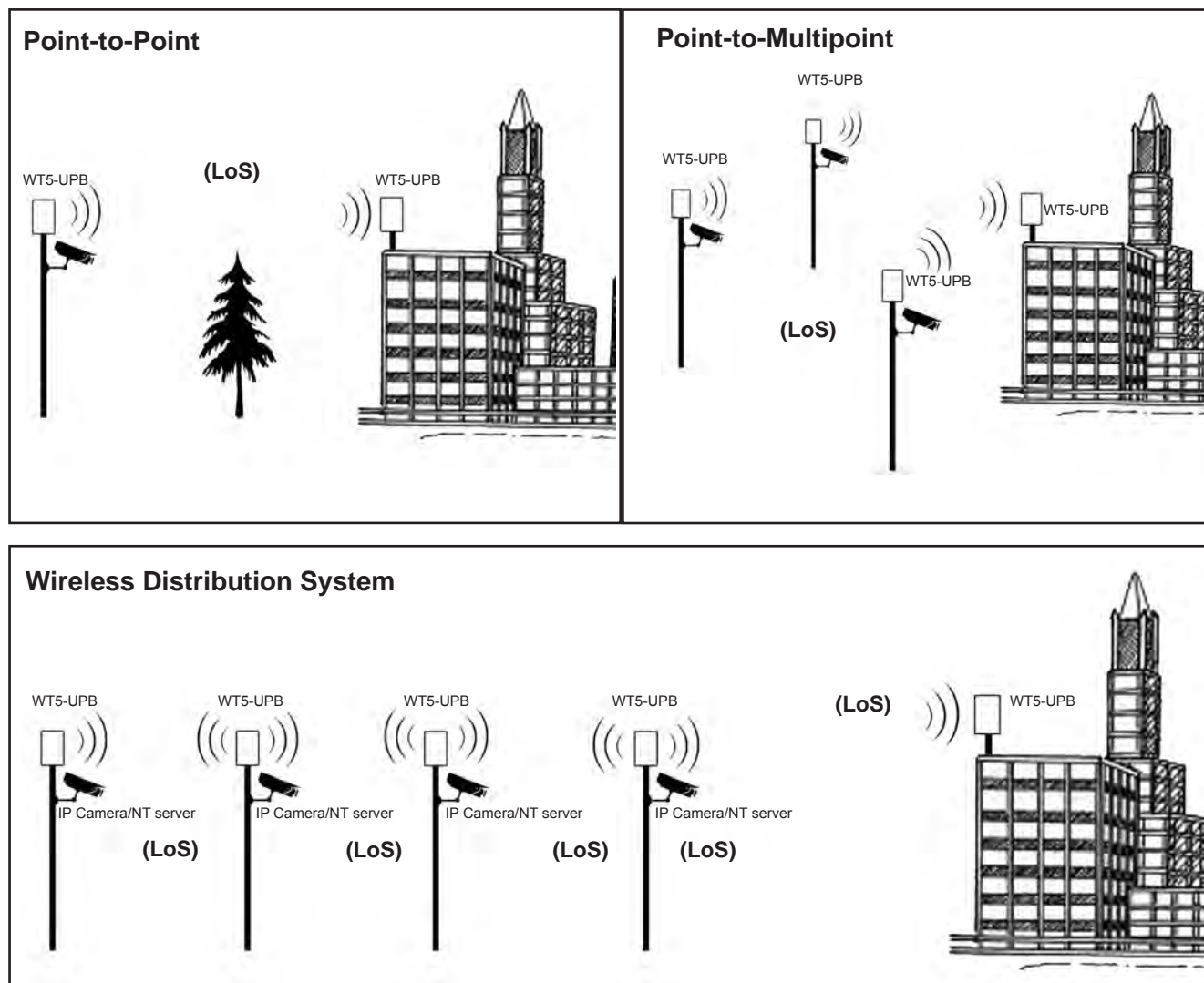
Wireless CCTV

Wireless transmission networks for CCTV security applications are becoming increasingly popular due to the flexibility of wireless communication and, low cost and low-disruption deployment compared to installing cabled systems.

At RhinoCo Technology we can customise your wireless solution utilising our range of analogue and digital transmission devices.

If you have a specific inquiry please visit us at www.rhino.com.au for further information or call our sales team.

Below are some examples of typical installations using our wireless transmission products.



Definitions:

IEEE 802.11

A set of standards for wireless local area network (WLAN) computer communication in the 5 GHz and 2.4 GHz public spectrum bands.

Access Point (AP)

Wireless base station which coordinates communication for wireless clients between each other and with the wired network.

Wireless LAN (WLAN)

One or more access points and their associated clients which communicate by radio to form a data network.

Wireless Distribution System (WDS)

Method for linking many wireless access points to form a mesh-like network.

Wireless Bridge

A pair of access points configured in bridge mode allowing two wired networks to be transparently connected through wireless link.

Line of Sight (LoS)

A clear, straight line path between wireless devices which is in no way obstructed by buildings or trees.

WIRELESS TRANSMISSION 5.8GHZ (DIGITAL)

**5.8GHz Grid Antenna 24dbi****Part No: WT5-GA24**

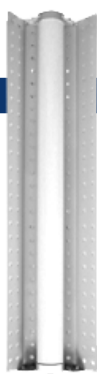
- Compact 5.8GHz grid antenna suitable for point-to-point operation
- Simple to install and aim
- Low mast and wind loading
- Single piece, surface-treated, corrosion resistant aluminium alloy grid reflector
- Stainless steel/aluminium mounting hardware
- Vented weatherproof feed housing with microporous membrane
- Durable solid brass feed
- Good multi-path interference rejection
- Designed and manufactured in Australia

**5.8GHz Panel Antenna 21dbi****Part No: WT5-PA21**

21dbi 5.8GHz panel directional antennas can be used ideally for a point-to-point network so that wireless connections can be achieved with LANs between buildings in a campus-type environment or between two remote areas.

**5.8GHz Omni Directional Antenna 12dbi****Part No: WT5-ODA12**

5.8Ghz omni-directional antenna is designed to radiate radio-frequency energy equally in all directions for widespread and all-point wireless deployment. This antenna is especially useful for optimizing coverage when you want to place your wireless access point or router out of plain view- in a wiring closet or above a ceiling pad.

**5.8GHz Sector Antenna 21dbi****Part No: WT5-SA21**

21dbi 5.8GHz Sector Directional Antenna comprised of a professional quality "cell site" base station antenna and are designed primarily for carrier-class applications and service providers using the 5.1 to 5.9 GHz ISM band. The antennas are packaged with a directional orientation bracket that makes the main beam width and angle adjustable when an antenna is installed on the top of a mountain, radio tower or high-rise building. This feature offers maximum signal strength for both reception and transmission in the desired area. In addition, the directional characteristic allows the user to adjust the transmitting and receiving angle of their antenna and is designed specifically for outdoor building-to-building application with buildings of various height.

**5.8GHz Panel Antenna 25dbi****Part No: WT5-UPB**

This low power directional panel antenna can be used to connect two LAN points wirelessly with little interference from outside sources due to a stabilising enclosure. Powered by PoE sources this small but powerful antenna is an excellent way to extend your reach.

**5Ghz Wireless Access Point 802.11a/n 600mw 16dBi****Part No: WT5-UNS**

- Performance Breakthrough
150+ Mbps real outdoor throughput and up to 15km+ range. Featuring 2x2 MIMO technology, the WT5-UNS links significantly faster and farther than ever before.

NEW!

- Next-Gen Antenna Design
New antenna array designs featuring 16dBi at 5GHz with optimized cross-polarity isolation in a compact form-factor.

- Dual Ethernet Connectivity
The WT5-UNS provides a secondary ethernet port with software enabled POE output for seamless IP Video integration.

- Intelligent POE
Remote hardware reset circuitry of WT5-UNS allows for device to be reset remotely from power supply location.

WIRELESS TRANSMISSION 2.4GHZ

2.4GHz Panel Antenna 21dbi**Part No: WT2-PA21**

Our 21dbi directional panel antenna can extend an existing wireless access point on a single floor by positioning the unit in the corner of the building. These antennas can also be used for a point-to-point network bridge between buildings in a campus-type environment or between two remote areas. Finally, they provide multi-floor transmission when placed on a ceiling, as the higher power output extends the range through typical flooring materials. Our antenna package includes several mounting options, such as fixed, wall-adjustable, and pole.

**2.4GHz Digital Wireless Transmitter and Receiver Set****AVTXRX2.4**

This system is the ideal product for use when multiple wireless video/audio links are required for any commercial, industrial or consumer application. An example application would be to create a wireless network over which you wanted to transmit video footage from your camera to your DVR or Monitor. Simply connect the camera to the Transmitter box and your DVR or Monitor to the Receiver box.



Alarms & Surveillance Products

RETAIL READY PRODUCTS

Replica (Dummy) Security Products	36
Fire Safety Products	36
Wireless Alarm Systems with Back to Base Monitoring	37
Wireless Alarm Systems with SMS Messaging	38
Wireless Alarm Systems without Monitoring	38
Wireless Alarm Accessories	39
Universal Transmitters & Receivers	40

PROFESSIONAL ALARM SYSTEMS

Hardwired Alarm Systems	40
Hardwired Alarm Accessories	44

GSM Products

Zenith Poll GSM Products	46
--------------------------	----

REPLICA (DUMMY) SECURITY PRODUCTS



Professional Outdoor Replica CCTV Camera With Weatherproof Housing

Part No: VSCD420F

This realistic looking replica CCTV camera acts as a deterrent to would be criminals. It has a weatherproof outdoor housing and the dummy camera has a red flashing LED. The kit comes with two high-visibility warning stickers, and includes all necessary hardware. No cables are required for operation, making installation very easy.



Professional Indoor Replica CCTV Camera

Part No: VSCDFF

- True professional appearance
- Stylish design
- Dummy camera with replica auto iris lens
- 2 x high visibility warning stickers
- Installation hardware included
- No wiring needed
- Camera includes flashing red LED (optional use. Requires 2 x AAA batteries)
- Wall mounting bracket with tilt / swivel adjustment



Professional Indoor Replica CCTV Dome Camera

Part No: VSCDDF

- True professional appearance
- Dummy dome camera with lens
- 2 x high visibility warning stickers
- Installation hardware included
- No wiring needed
- Camera includes flashing red LED (optional use. Requires 2 x AA batteries)



Professional Indoor/Outdoor Replica Infrared CCTV Camera

Part No: VSCD50F

- True professional appearance
- Stylish design
- Modelled on popular day/night weather proof cameras now commonly used in the CCTV industry
- Camera includes flashing red LED - (optional use. Requires 2 x AA batteries)
- 2 x high visibility warning stickers
- Installation hardware included
- No wiring needed
- Wall mounting bracket with tilt / swivel adjustment



Dummy Home Alarm Kit

Part No: DUMMYHA

- Imitation home alarm kit
- Realistic appearance outdoor siren / strobe
- Deters criminals
- Simple installation
- Supplied with UV-resistant warning labels & mounting hardware



European Style Dummy Home Alarm Kit

Part No: TSSDHA

This imitation home alarm makes your home look more secure, reducing the risk of burglary or home invasion. The realistic looking alarm body and warning stickers act as a deterrent to would-be criminals. Supplied with UV-resistant warning labels & mounting hardware.



Alarm Warning Stickers (4 pack) A4 Size

Part No: VSCDSA

- Pack contains 4 A4 sized Alarm Warning Stickers.
- 2 x Rear Adhesive Stickers for use on flat surfaces
- 2 x Front Adhesive Stickers for use on interior windows



Alarm Warning Stickers (4 pack) 130x100m Size

Part No: VS4STICKER

- Pack contains 4 of 130x100m sized Alarm Warning Stickers.

FIRE SAFETY PRODUCTS



Fire Blanket 1.0m x 1.0m in Vinyl Pouch

Part No: WGFB1.0VP

- Approved to Australian Standard AS3504 + Standards Mark
- Ideal on cooking oil and stove top fires
- Compact and easy to use
- 100% Woven Glass Fibre
- Handy Vinyl Pouch allows wall hanging
- Release tapes act as handles when blanket is unfolded



Photoelectric Smoke Alarm

Part No: WG1SMKP

Photoelectric Smoke Alarms consist of a light emitting diode and a light sensitive sensor. Photoelectric technology is superior to ionisation technology in detecting the visible smoke produced by smouldering fires, which most commonly occur in homes.

- Built-in test button
- Battery missing indicator
- Non-radioactive technology
- Extra loud alarm (sound over 85dB)

ALL IN ONE WIRELESS ALARM SYSTEMS

The Watchguard™ Digital Series is a true revolution in monitored back to base alarm systems. Utilising a compact main control unit with inbuilt communication dialer and advanced wireless component technology means installation is very simple. The wireless design allows you to expand or relocate any of the systems at anytime. They are truly "plug & secure" systems, without any complicated programming or cabling. See below and over page for full system features, operation and expansion details. Remote programming software download available.

MAIN FEATURES:

- Expandable up to 8 individual zones
- Easy to install & operate
- Around the clock 24hr protection
- Connects to existing phone line
- Automatically communicates with back to base monitoring centres
- Contact ID Protocol

HOW THIS SYSTEM WORKS:



When smoke, intruder or help signal is detected, an alarm signal will send to the communication dialer



This is the "brain" of the system, when an alarm code is received from the Movement Sensor, Smoke Sensor or Panic Button, the communication dialer automatically connects to your monitoring centre via your phone line & transmits the detailed alarm activation data in (Contact ID Format). The in-built alarm siren will also sound, but can be disabled if used as a "Hold-up Button".



Alarm Monitoring Centre

The communication dialer connects to your monitoring centre and they will notify security, police, fire or medical services when an emergency arises. Please contact your preferred monitoring service provider to discuss their individual monitoring service plans, notification method and charges.



You will also receive notification of the alarm event: "Hello John. This is Sally from the monitoring centre. Your alarm system at 3 Main Street Springville has been activated at 11:14am by the smoke sensor in your master bedroom."



Professional Grade Back To Base Monitored Wireless Alarm System for Home or Office

Part No: WGDIGITAL

The WGDIGITAL is a high-quality, anti-intruder professional grade monitored security system. Once installed, simply use the remote control button to arm the system before you leave your premises. If movement is detected after the system has been armed, the communication dialer will transmit the detailed alarm activation data (Contact ID Format) via phone line to your monitoring centre for appropriate response action to be taken.

System Includes:

- 1 x Main Control Unit - Communication Dialer
- 2 x Wireless Movement Sensors - Designed to detect the body movement of an intruder inside your premises.
- 2 x Code Hopping Remote Controls - Allows you to easily arm and disarm the system or activate the panic facility from virtually anywhere around your premises.
- 1 x Power Supply & 1 x Phone Connection Lead - Contact ID Protocol



Professional Grade Back To Base Monitored Wireless Fire Detection System for Home or Office

Part No: WGSMOKE

The WGSMOKE is a high-quality, monitored wireless fire detection system which is quick and easy to install and operate. When smoke is detected not only will the smoke sensor's in-built siren sound, but the alarm siren built into the main control unit will also sound in unison. The communication dialer will transmit the detailed alarm activation data (Contact ID Format) via phone line to your monitoring centre for appropriate response action to be taken.

System Includes:

- 1 x Main Control Unit - Communication Dialer
- 2 x Wireless Smoke Sensors - AS/NZS 3786:1993. Designed to detect the presence of smoke inside your premises using gas ionisation technology. In-built siren & low battery warning.
- 1 x Power Supply & 1 x Phone Connection Lead - Contact ID Protocol



Professional Grade Back To Base Monitored Wireless Emergency Duress System

Part No: WGEDS

The WGEDS is a system which in the case of emergency or duress is manually activated by pressing the wireless panic button to alert your monitoring centre. Once a button is pressed detailed alarm activation data in (Contact ID Format) is immediately sent via your phone line to your monitoring centre for appropriate response action to be taken. Up to 8 individual emergency buttons can be used with your Watchguard Emergency Duress System and each button can be individually identified by the monitoring centre (i.e. Grandma's button, Grandpa's button...etc).

Includes:

- 1 x Main Control Unit - Communication Dialer
- 2 x Wireless Emergency Panic Buttons - Designed with the elderly or invalid person in mind. Large rubber button. Nylon lanyard included. Splashproof. Dipswitch coding. Operating range up to 100m (line of sight)
- 1 x Power Supply & 1 x Phone Connection Lead - Contact ID Protocol

WIRELESS ALARM SYSTEMS WITH 2-WAY SMS MESSAGING

Ideal for Home, Business, Marine or Caravan!

Receive SMS Alerts from your alarm!



Watchguard SMS 2010 Alarm System

Part No: WGSMS2010

The Watchguard SMS 2010 is a true revolution in monitored home & mobile security systems. It has been designed specifically to provide simple installation and maximum protection at an affordable price. It can be used across a range of applications, including caravans, boats, building sites etc. or anywhere where a portable, self-monitored alarm is required. It is a sophisticated system, utilising the latest in GSM communication and wireless alarm technology. The Watchguard SMS 2010 communicates to your mobile via a GSM mobile phone network. A suitable SIM Card is required (not included). The SIM Card enables 2-way communication via SMS text messaging between you and your alarm.

How The System Works:

Plug & Play Setup: Security has never been so easy to install. After mounting the movement detectors in the zones to be monitored and mounting the external siren in a prominent position, simply plug the alarm module into the power pack (or connect 12VDC), turn the power key to on and you are ready to go!

Arm The Premises: Use your Remote Control to arm the Watchguard Wireless Alarm System to secure your premises. When body movement is detected in the premises, the sensors will send a message to the alarm module.

8 Zone Alarm Module with Built in GSM Modem: This is the brain of the system. When it receives the message from the Wireless Movement Sensors, it automatically sends your reported alarm to your designated mobile(s) as an SMS. The internal siren will also sound, helping repel the intruder.

Alarm Notification: The Watchguard SMS 2010 alarm module communicates to your mobile phone via GSM. When triggered, the module sends a detailed SMS of the reported alarm to your designated mobile(s). A voice message may also be sent to a landline telephone, where supported. Up to 5 people can be notified.

Package Includes:

- 1 x 8 Zone Alarm Controller Unit with built in quad band GSM modem
- 2 x Wireless PIR movement sensors
- 2 x 2 Button Code Hopping remote controls
- 1 x 12V DC Power Supply for the alarm controller unit
- 1 x Compact External Siren with Strobe



WIRELESS ALARM SYSTEMS

Watchguard Wireless Home or Office Alarm System

Part No: WGUARD



The Watchguard alarm is a complete stand-alone security system, which is ideal for the home or business owner wanting an affordable security system without a monitoring service. It is very reliable and extremely easy to install and operate. If the alarm is triggered, both the external and internal sirens will sound to repel intruders.

- Feature packed 8 zone security system (can be expanded using the range of Watchguard wireless accessories incl. reed switches and smoke sensors)

- Easy wireless installation
- 2 x quality wireless passive infrared detectors
- 2 x high security code hopping remote controls with lithium batteries
- Emergency panic function via remote control
- Backup battery & mains power adaptor
- Powerful external siren with flashing blue strobe
- Has the same appearance as security industry standard alarm systems
- High frequency internal siren to repel intruders



Watchguard Fire & Theft - Complete Burglary & Fire Detection System for Your Home or Office

Part No: WGUARDFT



The Watchguard Fire & Theft is a complete burglary and fire detection system suitable for your home or office. When the system detects the body movement of an intruder, or senses smoke inside your building, the alarm will activate both the internal siren as well as the external siren with flashing blue strobe. The system is very easy to use and install.

- Latest supervised wireless detector & code hopping remote technology
- Feature packed security system with simple wireless installation
- AS3786 approved wireless gas ionisation smoke sensor
- Can be expanded using the range of Watchguard wireless accessories reed switches & smoke sensors
- High frequency internal siren to repel intruders
- Professional grade, high quality components
- Emergency panic function via remote
- Backup battery & mains power adaptor
- Powerful external siren with flashing blue strobe



Basic Wireless Home Alarm System

Part No: WSENTINEL



This is an Entry Level Wireless Alarm System designed for use in a residential setting where the owner is wanting a basic security system without external monitoring.

The kit can be installed in three easy steps:

1. Mount the siren in a suitable position & plug in power adapter.
2. Mount the wireless detector.
3. Press the remote control to arm or disarm the system.

The Watchguard Sentinel includes:

- 2 x Remote controls to arm/disarm the alarm and panic function
- 1 x Wireless PIR sensor to detect movement up to 12m.
- 1 x Powerful outdoor siren and strobe to deter intruders

The system can be expanded with the range of Watchguard products, including smoke detectors, reed switches, PIR sensors and additional remotes.

WIRELESS ALARM ACCESSORIES

**Wireless External Siren****Part No: WSIREN**

- Wireless external siren with flashing blue strobe and backup battery
- 10m of cabling pre-terminated for 'plug & secure' installation
- Includes low voltage plugpack
- Sends tamper, low battery & supervision signals

**Wireless Supervised Reed Switch/Universal Transmitter****Part No: WREEDI**

- Used on doors and windows
- Also has inbuilt terminals for use as universal transmitter
- Up to 5 years life from 2 x CR2450 lithium batteries

**Wireless Solar Siren****Part No: WSSOL**

- Wire-free operation
- No cable required
- In-built solar panel to charge internal battery
- 40 days of continuous operation without sunlight once charged
- Incorporates powerful 105dB/M siren & blue strobe light
- High capacity 6V 1.2 Ah sealed acid rechargeable battery
- Tough polycarbonate housing
- In-built tamper switch to activate siren in case of unauthorised removal
- Weatherproof for outdoor use

* Also available with interface transmitter for use with other alarm control panels (See WSSOL-WSUTX)

**Wireless Supervised Smoke Detector AS/NZS 3786:1993****Part No: SMODETW**

- Gas Ionisation type
- Inbuilt piezo siren
- 9 volt alkaline battery
- Audible low battery warning

**Wireless Supervised PIR Detector (Outdoor)****Part No: PIRWOD**

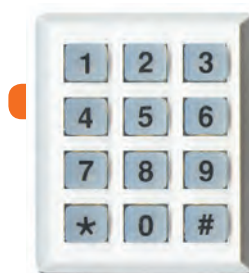
- Fully sealed UV resistant housing for outdoor use
- 4 selectable coverage patterns (wide angle 10m, curtain 10m, long range 20m & vertical curtain 3m)
- 9 volt alkaline battery provides approx. 1 year life
- Communicates alarm, low battery & supervision signals
- Works with all of our Universal Receivers & Alarms
- High quality TAKEX sensor
- Made in Japan

**Wireless Solar Siren & Interface Transmitter****Part No: WSSOL-WSUTX**

This system allows the Watchguard™ WSSOL solar siren to be used with most brands of alarm panels. The solar siren simply mounts to any external wall and the interface transmitter is connected to the siren output on your control panel. When the siren output is activated your solar siren will sound in unison and when the panel's siren output stops the cancel signal is sent to the solar siren.

- Compatible with most brands of alarm control panels
- 40 day continuous operation without sunlight once charged
- Powerful 105dB/M siren & blue strobe light
- Inbuilt solar panel to charge high capacity 6V 1.2Ah acid battery
- Tough polycarbonate weatherproof housing for outdoor use

40 Days
continuous operation
without sunlight

**Wireless Mini Numeric Keypad White****Part No: WKP**

- Allows arm / disarm, home mode & panic functions
- Backlit rubber buttons
- Only 45 x 55 mm
- Code Hopping Technology
- Wall mount or portable
- Selectable 4 digit PIN number

**Wireless Supervised PIR Detector****Part No: PIRW3**

- Dual Edge™ PIR Sensor Technology
- 12m detection range
- Compact & elegant design with swivel bracket for easy installation
- Intelligent power saving mode
- Up to 3 years life from 2 x CR2450 lithium batteries
- Selectable pulse count

**Large Wireless Numeric Keypad****Part No: WKPL**

- Large conventional size wall mountable keypad with flipdown front cover
- Allows arming & disarming of your system via PIN number
- 9 volt battery powered
- User programmable 4-digit PIN code
- Low battery indicator
- Back lit keys for night time illumination
- Weatherproof for indoor or outdoor use (under cover)
- For use on WGDIGITAL only



Personal Emergency/Panic Pendant

Part No: WPANIC

- Two internal switches meets new standard compliance for hold up buttons
- Designed with the elderly or invalid person in mind
- Large easy push rubber button
- Nylon lanyard included allows it to be worn safely around the neck
- Splashproof design
- Dipswitch coding



Wireless Emergency Duress "Mushroom" Button

Part No: MBTX

- Large industrial grade switch
- Inbuilt fixed code transmitter
- LED indicators for activation and low battery
- Optional external power supply



2 Channel Transmitter / Receiver Set - 433.92 MHz

Part No: RCX

Part No: RCX4

This product is designed to be simple and easy to use. It has simple wiring connections and can be used in a variety of applications. Primarily, this product can be used to remote control your car, garage door, home alarm system, or your electric gate. The number of items to which you can interface is almost endless. The unit is supplied with 2, dual button remote controls which have an operating range of approximately 100 metres (line of sight subject to environmental conditions). The remote controls for this unit operate using code hopping technology. This is otherwise known as anti code grabbing or anti scanning type. This leading-edge technology prevents unauthorised copying of your remote control. This technology sends a unique and different code each time any of the remote control buttons are pressed.

- 1 second (momentary) negative outputs for each channel
- Separate latched negative output for channel 1
- Flashing 12V LED output for channel 1, i.e.- flashes when the button is pressed, stops when it is pressed again
- Can store up to 15 remote controls in total
- Up to 100m radio frequency range (line of sight)

Suitable for use with:

Electric garages / gates

Vehicle central locking

Home security systems

To replace your old, large & low security remotes

UNIVERSAL TRANSMITTERS & RECEIVERS



Universal Transmitter / Receiver Set for Alarm Control Panels - 433.92 MHz

Part No: KISSRX

This 8 Channel wireless narrow-band UHF 433.92MHz receiver / transmitter set will allow you to add remote on/off & panic functions to your alarm panel. It will also allow you to add up to 4 wireless sensors to your existing hardwired alarm panel. The unit is supplied with 2 x remote controls which have an operating range of approximately 100 metres (line of sight - subject to environmental conditions).

- Code hopping remote control technology
- Remote functions include arm / disarm & panic
- Ability to quickly add or erase detectors from your system
- 4 wireless DETECTOR zones available
- Wireless detector supervision output
- Low battery warning output
- Detector tamper warning output
- Intelligent detector learning program to prevent accidental code duplication
- Memory recall function to identify individual detectors ending low battery or tamper codes
- Wireless detectors available include PIR's, reed switches, smoke sensors & panic buttons

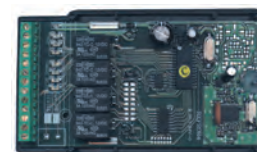
Suitable for use with WIRELESS:

PIR Movement Detectors

Magnetic reed switches

Panic / duress buttons

Smoke sensors



4 Channel Multi-Function Receiver / Transmitter Set - 433.92 MHz

Part No: RXPROR4

The RXPROR4 is an advanced multi-purpose 4-channel narrow-band UHF receiver / transmitter set with fully programmable relay outputs (1 amp rating). It is supplied as standard with 2 x code hopping, 4 button remote controls with long life lithium batteries. It can be used to add Watchguard wireless alarm accessories to virtually any alarm panel or device.

- Up to 200m radio frequency range (line of sight)
- All outputs are individually programmable to suit almost any application (momentary, latched, timed or pulsed)
- Up to 5 high security code hopping remotes (anti-scan, anti-code grabbing) can be used
- Power supply requirement: 12VDC @ 500mA
- Compatible with Watchguard wireless alarm detectors
- Up to 4 wireless detectors can be used
- Supports detector low battery, supervision & tamper signal outputs
- Step by step programming via remote control & indication via feature and channel LEDs

Suitable for use with:

To replace your old, large & low security remotes

Add wireless alarm sensors to any device

Electric garages / gates

Most devices that allow remote on / off operation

Home security systems

8 Zone Alarm Panel & LCD Keypad

The SMS8 is our premiere 8 Zone Alarm Panel and LCD Keypad, ideal for use in a home or business. The system is designed to provide personal security monitoring via your mobile phone using SMS Messaging or optional high security 24 Hour back-to-base monitoring. (*Fees Apply)

System reports are sent using the industry standard Contact ID communication protocol. The benefit of using the SMS8 to send these reports is that no SIM card is required - SMS messages are sent via your landline.

The SMS dialer function can be disabled if desired so as to operate as a regular 'dialer' alarm control panel only. The system is designed to be easily programmed, with all programming and setup done via a simple menu-driven system.

Features:

- 8 Hardwired Zones
- One button "Quick Arming" plus "Home Arming" for arming only certain areas - ie: at night you can have the sensors in living areas armed, but those in the bedrooms disarmed.
- Panic, medical and fire emergency buttons
- Key-switch input
- On board modem with Contact ID protocol for optional back-to-base monitoring
- Supports SMS text messaging of alarm information to two separate mobile phone numbers
- Telephone line fault monitoring



*mobile phone not included

Australian Designed!

ALSO AVAILABLE Professional Complete Hardwired Alarm Kit

- Includes:
- 1 x Watchguard SMS8 Alarm Panel
- 1 x External Siren/Strobe
- 1 x Indoor Piezo Siren
- 3 x High Quality PIR Sensors
- 4 x Surface Reed Switches
- 1 x Emergency Panic Button
- All power supplies and cabling
- Ideal for home or office.

Model: SMS8KITHW

SMS8 OPTIONAL 2-Wire Serial Interface Wireless Receiver

- Narrow band wireless receiver
- 2 Wire interface connection
- Includes 2 high security code-hopping remotes
- Remote functions include arm/disarm, home arm & panic
- 8 Wireless detector zones
- Easily add & erase up to 8 wireless detectors into your system
- Compatible with all Watchguard™ Wireless Accessories

Model: SMS8RX

Does your client want to receive SMS Messages instead of paying for back to base monitoring? If they demand this function, we have the solution!

Connect to alarm panel dialer

Connect to PSTN phone landline

i.e:
Account No. 1
Alarm Zone 3
Low Battery

Contact ID to GSM SMS Message Text Converter

- Connects to panel to convert Contact ID to SMS
- Enables personal monitoring, with SMS notification of alarms
- Connects to standard telephone line
- Easy to install - connects to communications port, 12V supply output and telephone line
- Maximum 16 alarm zones
- No SIM Card required

Model: SMS8IB

Part No: SMS8	(8 Zone Alarm Panel & LCD Keypad)
Part No: SMS8KITHW	(Professional Complete Hardwired Alarm Kit)
Part No: SMS8RX	(Optional 2-Wire Serial Interface Wireless Receiver for SMS8)
Part No: SMSIB	(Contact ID to GSM SMS Message Text Converter)



Watchguard™ Alarms, a renowned leader in the electronic security industry for some 34 years, takes great pride in bringing you a new range of Professional Alarm Panels. Our Australian-Designed SMS8 Alarm Panel has been the flagship product of the Watchguard Brand, with many thousands sold and protecting properties worldwide. We have now expanded our range of alarm panels by introducing a wider range of options in this field.

Our new 864 panels are produced by South Africa's leading control panel manufacturer - Inhep Digital Security (IDS). Their product range is renowned for its robust reliability and simplicity. Their dedicated team of engineers have been responsible for designing and developing intrusion detection equipment that now has an international following. The design focus has always been 'simplicity and reliability.' Their proprietary products are regularly tested by SABS (South African Bureau of Standards) and, where applicable, by the appropriate test laboratories in other countries to ensure compliance to international standards.

Over the past 20 years this range of alarm panels has developed a hard-won reputation of robust reliability and quality. Developed to meet the harsh conditions of Africa, the alarm panels are used by the premier monitoring and response companies in South Africa - probably the world's most demanding security market! This recognition has extended onto the international stage, with IDS distribution networks now serving at least 16 countries on 4 continents.

IDS engineers are driven by the passion to eliminate clutter and complexity, and to develop simple, robust, elegant solutions to real-world problems.

Watchguard™ Alarms is proud to be associated with IDS - Where others create confusion, together we create certainty.

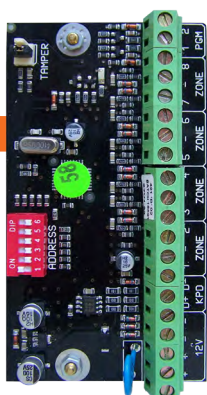


8 to 16 Zone Expander for WGAP864

Part No: WGAP864EXP816

Use 1 of these to expand the panel from 8 to 16 zones. This board provides an additional 8 zones with end-of-line supervised zone inputs

- Optional tamper per zone using double end-of-line resistors
- Programmable loop response time
- Dedicated box tamper input
- Excellent protection against lightning (provided by specialist "zap tracking" and transient suppressors)



16 to 64 Zone Expander for WGAP864

Part No: WGAP864EXP1664

Use up to 6 of these to expand the panel from 16 to 64 zones. Each board provides an extra 8 zones with end-of-line supervised zone inputs

- Optional tamper per zone using double end-of-line resistors
- Programmable loop response time
- Dedicated box tamper input
- Excellent protection against lightning (provided by specialist "zap tracking" and transient suppressors)



Alarm Voice Module for WGAP64 Alarm Panels

Part No: WGAPX64VM

To increase the remote accessibility of your WGAP864 alarm system, you install the optional WGAPX64VM phone adapter. With this module you can inquire about the status of your alarm system via telephone, and make changes to security settings. The module can also be configured to send alarm notifications to your phone.



Watchguard High Quality LCD Keypad for use with the WGAP864 Alarm Panel

Part No: WGAPKP16CLCD

Developed for use with the Watchguard WGAP864 Alarm Panels, this high quality LCD Keypad easily allows you to program and access your security system's functions and information. The large LCD screen displays menus and messages to inform you of your alarm status/any changes you are making. All the alarm system programming is done via the LCD Keypad. Programmable functions accessed through the keypad include auto-arming, away arming, zone bypassing and setting/changing/allocating user codes.

WGAP864

NEW!

8 Zone Alarm Panel & LCD Keypad Expandable to 64 Monitored Zones

The WGAP864 is a versatile, microprocessor-based, fully featured 8/64 Zone alarm panel, which has two partitions. The alarm panel provides immediate notification of burglary, fire, medical & panic conditions. There is a dedicated panic zone, monitored siren output, auxiliary power outputs and five (expandable to seven) programable outputs that may be programmed to perform various trigger/switching functions.

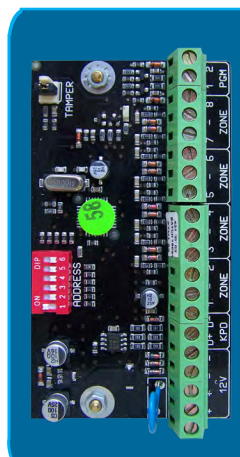
Product Features:

- 64 zones (up to 16 onboard)
- 8 partitions
- Supports up to 8 keypads
- 128 user codes
- 25 fully programmable outputs
- Ability to log up to 1000 events
- 1.5A available onboard power (dual power supply)
- Dedicated 500mA battery charger for optimal backup battery management
- Up to 4 bus receivers (fully programmable from the keypad)
- IDS's renowned one-button arming
- 3 quick arm modes: Stay, (2) Away and (3) Stay and Go
- 4 stay profiles (quick-select specific stay profiles via keypad shortcut): Stay, Night Stay, Day Stay, Perimeter
- Supports star or daisy chain modules up to 300m
- Dual and split reporting
- Dynamic battery self-test
- Dedicated panic zone
- Optional tamper per zone
- Separate box tamper zone
- Maintenance code
- No activity arming
- Recall bypass selected
- Auto arm/disarm per partition
- User-enabled chime and buzz zones
- Programmable loop response time
- Excellent protection against lightning (provided by "zap tracking" and transient suppressors)
- Telephone communicator
- Expanded heat sink



OPTIONAL 8 Zone Expanders

- 8 wired, end-of-line supervised zone inputs
- Optional tamper per zone using double end-of-line resistors
- Programmable loop response time
- Dedicated box tamper input
- Excellent protection against lightning (provided by specialist "Zap Tracking" and transient suppressors)
- Expander supply voltage monitoring



kit
WGAP864KIT

8 Zone Hardwired Home Alarm Kit for COMPLETE Home/Commercial Building protection

If you're after complete commercial building protection, you **NEED** the WGAP864KIT hardwired alarm system. It contains a premiere Watchguard™ 8 Zone alarm panel, internal and external sirens, motion sensors, reed switches, emergency panic button and all necessary power supplies and cabling. These detectors and sirens help protect **ALL** areas of your house by performing functions such as monitoring rooms and offices for movement, and detecting when door or windows are opened. This gives you greater peace of mind that your building is secure against thieves, burglars and vandals.



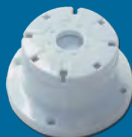
1 x 8 Zone Alarm Control Panel with LCD Keypad



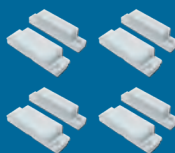
1 x Outdoor Siren/Strobe



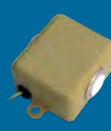
3 x High Quality PIR Sensors



1 x Indoor "Top Hat" Piezo Siren



4 x Surface Reed Switches for Doors or Windows



1 x Emergency Panic Button



1 x 7Ah Lead Acid Backup Battery
1 x 100M of 4 Core Alarm Cable
1 x 16VAC Power Supply

Part No: WGAP864

Part No: WGAP864KIT

HARDWIRED ALARM ACCESSORIES



Universal Passive Infrared Movement Sensor

Part No: PIRHW
Part No: PIRLHLB

This advanced PIR body heat movement sensor is suitable for indoor use with any alarm control panel. It can detect movement up to 12m away at an angle of 110 degrees from the sensor. The detector features automatic temperature compensation to improve performance when the ambient heat level in a room changes. The adjustable pulse count function enables you to select either normal or reduced detection sensitivity levels for use in harsh environments.

- High quality dual element PIR sensor
- Micro processor controlled
- Auto temperature compensation
- Adjustable pulse count (sensitivity)
- Selectable N.O. or N.C. alarm outputs
- PIR Mounting Bracket also available



Model No: PIRLHLB



Complete Outdoor Siren - Full Assembled AC/DC Siren, Strobe & Tamper Switch

Part No: COS

Specifically designed to save alarm installers time and money, this product combines a dual power AC/DC high powered siren, high visibility blue strobe light and tamper switch. It is housed in a moisture and UV resistant attractive industry standard external casing and all cabling is pre terminated.

- Suits all alarm control panels
- No assembly required, saves time & money on installation
- Highly durable, moisture & UV resistant external housing
- Includes rear protective cover



Fully Assembled AC / DC Siren, Strobe & Tamper Switch



Flush Mounted Internal Siren

Part No: DPSF

- Emits a high frequency oscillating siren intolerable to the human ear
- Low profile design to mount flush with ceiling
- Repel intruders from your home



Compact External Siren With Strobe

Part No: W24SIREN

European style 115dB external siren with integrated blue strobe light, piezo siren and tamper switch. The siren utilises a simple 2-wire connection and 12V power.



Universal Movement Sensor With Triple Technology

Part No: PIRHWT
Part No: PIRLHSB

This advanced indoor movement sensor can be used with any alarm control panel and incorporates 3 detection technologies designed to prevent false alarms. It is particularly suited for use in harsh environments where using a standard PIR may result in false alarms caused by rapid changes in heat, light levels or from other environmental factors. This triple technology detector requires both the PIR and microwave sensors to both simultaneously detect an intruder (using software signal analysis) before activating the alarm output. Detection range is approx. 12 metres.



Model No: PIRLHSB

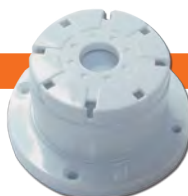
- High quality quad element PIR sensor
- Adjustable microwave sensor with auto temperature compensation
- Selectable N.O. or N.C. alarm outputs
- PIR Mounting Bracket also available



Single Tone Siren

Part No: S42

- 12V DC
- 115dB single tone siren
- Mainly used with control panels with no internal siren driver



Piezo Siren

Part No: DPS

- Repel an intruder from your home by installing this high frequency, super loud siren.
- Connect to the Negative On Alarm output on your alarm system
- Dimensions: 85(W) x 89(D) x 41(H) mm



Photoelectric Hardwired Smoke Detector

Part No: SMODET15P

- Sensor Type: Infrared Photoelectric Diode
- Dust and insect proof
- Detection Range 20m Sq
- 12V DC



Flashing Blue Strobe Light

Part No: DSBM

- Low profile blue strobe light
- Designed for use with external sirens
- Continuous rated xenon tube



Surface Reed Switch (N/O Contact)

Part No: DSRNONC

High quality Magnetic Surface Reed switch which has Normally Closed/Normally Open Contacts.



High Impact Plastic External Siren Cover

Part No: DPSCY

This External Siren Cover has been developed and designed as a replacement for old or damaged siren covers.

Main Features:

- Highly Durable.
- Moisture and UV resistant.
- Designed in Australia.



Concealed Reed Switch

Part No: DCRW

- Perfect for mounting in the tops of doors or hidden areas
- Easy "push-in" installation
- Compact design
- Dimensions(mm): 32(L) x 11(Dia.)
- White



Roller Shutter Reed Switch

Part No: DRSR

- Strong heavy duty cast housing
- Termination contacts via a stainless steel flexible conduit
- N/C contacts



Large Surface Mount Reed Switch

Part No: DSRHDW

- Surface mounted reed switch
- Industry standard
- N/C contact with solder terminals
- Dimensions(mm) Reed: 90(W) x 13(H) x 12(D) Magnet: 90(W) x 13(H) x 12(D)



Mini Surface Mount Reed Switch

Part No: DSRLW

- Compact design surface mount
- Industry standard
- N/C contacts
- Dimensions (mm): Reed - 63(W) x 12(H) x 20(D)
- Magnet - 63(W) x 12(H) x 11(D)



On/Off Key Switch

Part No: 2POSSPST

An On/Off keyswitch with 2 keys used for various applications. 2 positions, single pole, single throw changeover switch.



12V 15A Universal Switching Relay

Part No: REL01LOOM

This is a 12V 15A Contact Rated Universal Switching Relay. The relay is contact closed when power is applied.

NC Tamper Switch for Siren Covers

Part No: DTBS



- Open Type
- 1A
- 125V
- For Siren Covers such as the DPSCY, which do not have a tamper switch



Emergency Button Switch

Part No: DEBS

- When pressed will instantly trigger the alarm
- N/C & N/O contacts
- Slimline design
- Dimensions(mm): 23(W) x 76(H) x 15(D)



Dual Button Emergency Switch (N/O Contact)

Part No: DEBSDUAL

- Dual button activation virtually eliminates accidental triggering
- Push to Close momentary contact type
- Pre-wired for quick installation
- Sturdy metal case, silver-plated spst contacts
- Rated 1Amp at 25VDC



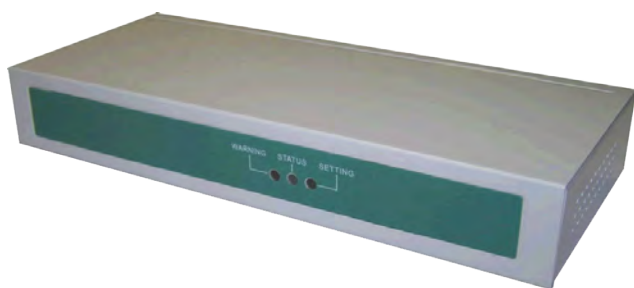
Dual Technology Glass Break Detector

Part No: SHARD

- 8 meter radius coverage
- Automatic ranging
- Electronic failure trouble indicator
- Communicator output on trouble
- Alarm memory LED



GSM Products



GSM Fixed Wireless Communication Terminal with External Antenna

Part No: GSMTERMINAL

If you are still using PSTN telephone lines to monitor alarm systems, your days are numbered. Telecommunication companies are fast moving to IP Telephony and Naked DSL Broadband VoIP Telephony. This move will make your alarm panel PSTN dialer useless unless you have another solution.

The GSM Terminal device is designed to act as an interface between the GSM network and your Back-to-Base monitored alarm system. Just plug your old alarm panel dialer into the GSM terminal and fit a standard GSM SIM card. Now, all alarm monitoring notifications will be made via the GSM network.

If standard PSTN lines are not available (ie: if you have Naked DSL in your home/office) the GSMTERMINAL can be connected to your alarm control panel to allow it to dial out in the event of alarm activation, via the GSM network.

By allowing the alarm control panel to operate over the GSM Network, the GSMTERMINAL is an important backup device, ensuring your system can still communicate with your monitoring centre, even if the landline is sabotaged or out of service.

Features

- Applies high-quality dual/quad band GSM technology to a wide variety of communication purposes
- Integrated GSM dual band module
- Intuitive PC Software for easy unit configuration
- Device LEDs easily display received signal strength
- GPRS data rate up to 85.6Kbps for downstream and up to 21.4kbps for upstream



GPRS/GSM Backup Module with Encrypted TCP/IP Communication

Part No: GSMBU-ZB

In case your landline is sabotaged or is out of service, this GSM back-up device enables your security system to communicate with your monitoring centre via the mobile phone network.

It utilises a high quality GSM modem and is capable of sending (independently to your panel) its own periodic phone test, phone line failure or low battery message to 4 different receiver station phone numbers, via Contact ID protocol using the GSM network.

Both pulse and DTMF dialing are supported and as the unit draws less than 100mA, it can be easily powered directly from your alarm panels 12VDC power supply.

Features

- Backup phone line function: In case of the failure of your PSTN Line, the system simulates a virtual PSTN line over the GSM mobile network.
- Encrypted GPRS-TCP/IP communication
- Phone line monitoring: In the event of failure, the GSM communication will take over
- Default factory setting: If the connected PSTN landline is available, all calls will be made through the PSTN line. If the PSTN line ever fails, all calls will then be made via the GSM Network



Vehicle Security Products

VEHICLE ALARMS & IMMOBILISERS

Car Alarms & Engine Immobilisers	48
Upgrade Car Alarm Systems	50
Engine Immobilisers	50

VEHICLE ALARM ACCESSORIES

Sirens	51
Vehicle Alarm Accessories	51
Central Locking Kits	52

VEHICLE & PERSONAL TRACKING SYSTEMS

GPS Vehicle / Personal Tracker	53
Vehicle Driving Recorder System	54

MOBILE DIGITAL VIDEO RECORDERS

Mobile Digital Video Recorders	55
--------------------------------	----

REVERSING KITS, SENSORS & CAMERAS

Vehicle Reversing Kits	56
Vehicle Parking Sensors	56
Vehicle / Reversing Cameras	57

NEW!! Anti-Carjacking Features



Anti-Hijack Car Alarm and Upgrade in One, inc. 3 Point Engine Immobiliser and Glass Break Sensor

Part No: RAV3-PNG

The Rhino RAV3-PNG has all of the features of the standard RAV3 with added ability to detect a carjacking event and immobilise the vehicle.

- Three Point Immobiliser
- Intelligent glass break sensor
- Intelligent dual stage shock sensor
- Coded Battery Back-Up Siren
- Door, bonnet and boot protection
- Integrated central locking relays
- Turbo Timer Functions
- Alarm control via vehicle factory key
- Special features for courier drivers
- Anti-Hijack features to prevent carjacking attacks



Australian Standards Approved Car Alarm and Upgrade in One, inc. 3 Point Engine Immobiliser and Glass Break Sensor

Part No: RAV3

The Rhino RAV3 is one of our top quality Australian Standards Approved car alarm. It has been engineered to the highest specifications to give you the ultimate in car security. The main features which have been developed and incorporated into the RAV3 include:

- Three Automatic Immobilisers
- Intelligent Glass Break Sensor
- Intelligent Dual Stage Shock Sensor
- Data Battery Back-Up Siren
- Door, bonnet and boot protection
- Central locking from the remote
- Turbo Timer Functions
- Alarm control via vehicle factory key
- Courier function

The RAV3 includes:

- 1 x ASA 3-Point Engine Immobiliser
- 2 x 4-Button Rolling Code Waterproof Remote Controls
- 1 x Mini Coded Backup Battery Siren
- 1 x Glass Break Sensor

COMMON FEATURES FOR RAV3 & RAV3-PNG

Three automatic immobilisers

For maximum security fuel pump, ignition system and starter motor immobiliser cuts (where possible) are made so the car cannot be started unless it is disarmed via the remote. The system will immobilise 40 seconds after the ignition is turned off or when the alarm is armed.

Intelligent glass break sensor

Detects the sound frequency of breaking glass. It will only trigger the alarm if the shock sensor also picks up an impact. This reduces false alarms.

Intelligent dual stage shock sensor

It gives a warning on a light impact and a full alarm on a heavy impact to the vehicle. It can distinguish between environmental shocks such as trucks or aircraft and a thief attempting to break in. It will auto adjust its sensitivity for the environment on arming.

Data battery back-up siren

A self powered siren that communicates independently with the alarm so it cannot be fooled into turning off like normal battery back-up sirens.

Door, bonnet and boot protection

If the alarm is armed and a door, bonnet or boot is opened the alarm will sound.

Central locking from the remote

The alarm will lock/unlock the doors when the alarm is armed/disarmed.

Two rolling code 4 button waterproof remotes

(If you are not using your car's factory key to operate the alarm).

Turbo timer functions

Specifically to work with turbo vehicles. It has two turbo timer options to choose from. On-board turbo timer – no need to fit an external unit – using the on-board turbo timer is the most secure way to have a turbo timer. The alarm is armed as usual but the car will continue to run for the preset run time of 1, 2 or 4 minutes. If the alarm is triggered during this time the car will shut down and the alarm will sound. It can also be turned off prior to the preset run time via the remote.

Turbo timer interface – link the alarm up with your existing external turbo timer so your car will continue to run on the external turbo timer after the alarm is armed as usual. If the alarm is triggered during this time the car will shut down and the alarm will sound.

Control the alarm with your vehicle's factory key

If your vehicle has a factory key that locks/unlocks the doors your RAV3 alarm may be able to interface with it so the alarm arms/disarms at the same time. Boot release will also work from the factory key (and if the alarm is armed it will disarm). This feature will work with most factory keys.

Courier function

Courier function allows the engine to continue running indefinitely while the system is armed. If the alarm is triggered during this time the car will shut down and the alarm will sound.

Compatible with all Rhino car alarm accessories and sensors

Four year warranty

Also available in a 24-volt version



Car Alarm and Immobiliser With 2-Way SMS Mobile Communication via SMS Text Messaging

Part No: RAMV2

The Rhino Model RAM is arguably the world's most advanced car alarm system. This system enables 2-way communication between you and your vehicle via a GSM mobile phone. The RAM is a high specification, all-in-one car alarm and immobiliser, with GSM mobile phone communication via SMS Text Messaging (SIM card required).

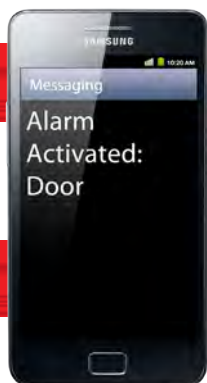
- 2/3 Point engine immobilisation (2 Onboard Relays and Output)
- Dedicated onboard audio discriminating glass break sensor
- Battery backup siren
- Code Hopping remote technology
- All points of entry protection (Doors, Boot, Bonnet)
- 2 stage shock (impact) sensor with auto adjust
- All black wiring harness
- Negative pulse central locking outputs
- GSM low coverage warning

By Sending An SMS Message To Your Vehicle You Can:

- Acknowledge receipt of an alarm message
- Remote immobilise the engine
- Remote arm and disarm the system
- Remote unlock the doors

The RAM Can Send SMS Messages To Up To 5 Mobiles Advising:

- Alarm activation and cause
- If no response, your RAM will dial specifically programmed number(s)
- Panic / duress activation
- Car low battery warning



Backup Battery Car Alarm & Immobiliser

Part No: GTR

The Rhino GTR is a well featured mid-level car alarm and engine immobiliser. It is a popular choice for budget minded owners looking for most standard alarm features plus connection to their existing central locking and electric boot for keyless entry. The compact size siren is easy to install in cramped engine bays.

- 2 x Compact size remote controls
- 1 point engine immobilisation (onboard)
- Can protect doors, boot and bonnet
- Car body impact sensor
- Central locking relay outputs for keyless entry
- Current (voltage drop) sensing



12 Volt Backup Battery Car Alarm With 2 Point Immobiliser

Part No: GTS

The Rhino GTS is a highly featured mid-level car alarm and engine immobiliser. It features code hopping remote technology, a full size backup battery siren and numerous programmable features. The two onboard engine immobilisation relays can be used to cut both your starter motor and fuel pump.

- Backup battery siren
- 2 x Code Hopping remote controls
- 2 stage car body impact sensor
- 2 point engine immobilisation (on board relays)
- Protects doors, boot and bonnet
- Central locking relay outputs for keyless entry

24 Volt Version (Model: GTS24V)

Note: GTS24V siren is non battery backup



Australian Standards Approved Upgrade Car Alarm & Immobiliser With Wireless Keypad

Part No: RAKP

Unfortunately, large numbers of high-risk vehicles are now being stolen by thieves gaining access to the owner's car keys. With the RAKP, even if your car keys are stolen (including possibly your factory remote control) the RAKP can not be disarmed without entering your chosen PIN number. The Rhino RAKP is a variant of the RA Model and is designed primarily for use in modern high theft-risk vehicles with factory remote controls. The inclusion of our special wireless keypad prevents anyone from being able to disarm the alarm and start the vehicle unless they enter the chosen 4 digit PIN number within 20 seconds of opening one of the car doors.

- Auto-Immobiliser: The 3 onboard immobilisation circuits automatically activate 38 seconds after turning the ignition off.
- Auto Arming Alarm (Programmable): If the car ignition is switched off and a door is opened and closed, the alarm can be set to arm automatically.
- Manual Arming: You can also turn the alarm function on manually via your PIN number if you don't want to use the automatic function all the time.
- The wireless keypad uses long-life lithium batteries and has backlit keys for night time illumination.

UPGRADE CAR ALARM SYSTEMS

**'Transformer' Upgrade Alarm System For Vehicles With Factory Keyless Entry****Part No: TRANS**

If your vehicle is fitted with a factory remote keyless entry system, and you would prefer not to have a second remote control on your keyring (because your ignition key is part of the factory remote control), then the Rhino Transformer is your system of choice. Whenever you lock and unlock your vehicle with the factory remote, your Transformer alarm will arm/disarm in turn. The Transformer is simply a variant of the RA system with identical features - except there is no need for remotes. The connection of engine immobilisation circuits (up to 3) in addition to the factory immobiliser is optional, but at least 2 must be connected to meet Australian Standards requirements.

- Australian standards approved AS/NZ 3749.1 2003
- Three point engine immobilisation (onboard relays)
- All points of entry protection (doors, boot, bonnet)
- 2 stage pre-alert car body impact sensor with ETS
- Alarm memory (allows recall of the 10 most recent alarm activations in order)
- Visual arming and disarming via indicators (optional)
- Audio discriminating glass break sensor
- Backup battery siren
- All black wiring harness



* Mobile phone not included

'Transformer SMS' Add-On SMS Paging System For Vehicles With An Existing Alarm**Part No: TSMS**

The 'Transformer SMS' adds state-of-the-art 2 way GSM mobile phone communication to your existing factory or after-market car alarm system. If you intend to rely on the existing alarm system fitted in your vehicle, this product enables you to be notified on your mobile phone if the alarm is activated. You can also connect to your existing central locking to allow you to unlock your car from your mobile in case you ever lock your keys in your car!

- Notification of factory alarm activation via SMS text message
- Receive SMS alerts when your car battery is low
- Up to 5 people can be notified upon alarm activation
- Failure to respond to an SMS alert causes the system to ring the primary user to gain maximum attention
- 3 independent negative outputs can be controlled via SMS message these may be used for remote arming or other functions such as opening electric gates, remote immobilisation, etc.
- SMS controlled central locking outputs
- GSM sim card required

ENGINE IMMOBILISERS

**Remote Keyless Entry & Basic Immobiliser System****Part No: RCXI**

This product can be used to remote control your existing car central locking and electronic boot release. It has indicator flash outputs and includes a single engine immobilisation circuit. The RCXI can also be used for remote controlling your garage door, home alarm system, or your electric gate.

- Adds remote controlled functionality to existing key operated central locking
- Remote Code Hopping technology
- Operating range of approximately 80 metres
- 1 second (momentary) negative central locking outputs for each channel
- Electric boot release output
- Optional connection to flashing LED, engine immobilisation relay & indicators
- Ultra compact module; Dimensions(mm): 60(W) x 30(D) x 13(H)

**Australian Standards Approved Remote Control 2 Point Engine Immobiliser****Part No: RES4601V2**

The Rhino RES Engine Immobiliser is an Australian Standards Approved System and features passive arming, all black wiring and 2 engine immobilisation circuits. It also has a negative on alarm output on door and ignition activation to allow an optional siren to be connected for basic alarm function.

- Australian standards approved: AS/ NZS 4601:1999
- 2 point engine immobilisation (onboard relays)
- Code Hopping remote technology (anti-scanning, anti-code grabbing)
- Auto immobilisation (passive arming)
- Visual arming and disarming confirmation via blinkers
- Negative pulse central locking outputs
- All black wiring harness
- Insurance approved



24 Volt Version
Available
(Model: JAG24V)

JAG 12 Volt Australian Standards Approved Remote Control 3 Point Engine Immobiliser**Part No: JAGV3**

The Rhino JAG is our top-of-the-range Engine Immobiliser and it's recommended for all high theft-risk vehicles. It is approved to the latest Australian Standard and features 3 onboard engine immobilisation relays plus all black wiring. The additional option of utilising the Rhino wireless keypad means maximum protection for your vehicle.

- Australian standards approved: AS / NZS 4601:1999 / amdt 1:2003
- Insurance approved including specialist insurers
- Three point engine immobilisation (onboard relays)
- Code Hopping remote technology (anti-scanning, anti-code grabbing)
- Auto immobilisation (passive arming)
- Onboard central locking relay outputs
- Optional wireless keypad compatible
- Numerous programmable features plus upgradeable to full alarm system

SIRENS



Cabin Piezo Siren - Black

Part No: DPS

Repel an intruder from the cabin of your vehicle by installing this high frequency, super loud siren under the dash.

- Connect to the Negative on Alarm output on your alarm system
- Dimensions: 85(W) x 89(D) x 41(H)mm



Coded Backup Battery Siren - Suits RA, JAG Only

Part No: BBSCv3

For use with Rhino RA & JAG only as these systems utilise a special data code signal to switch the siren on and off.

- Power: 12VDC
- All black wiring
- Australian standards Approved
- Dimensions: 105(W) x 110(D) x 80(H) mm



Mini Coded Backup Battery Siren - Suits RA & JAG Only

Part No: MINIBBSCv3

For use with Rhino RA & JAG only as these systems utilise a special data code signal to switch the siren on and off.

- Power: 12VDC
- All black wiring
- Australian standards approved
- Dimensions: 55(W) x 65(D) x 72(H) mm



Universal Siren Battery Backup - Suits GTS

Part No: SBB

Universal replacement siren for most brands of car alarm. Used in Rhino GTS Car Alarm.

- Colour wiring harness
- Negative & positive trigger inputs
- Override keyswitch
- Dimensions: 105(W) x 11(D) x 80(H) mm



Universal Mini Backup Battery Siren - Suits GTR & RSA

Part No: MINISBB

Universal replacement siren for most brands of car alarm. Used in Rhino GTR & RSA Car Alarms.

- Power: 12VDC
- Used in Rhino GTR & RSA car alarm
- Negative & positive trigger inputs
- Override keyswitch
- Dimensions: 55(W) x 65(D) x 72(H) mm



Single Tone Siren

Part No: S42 / S4224V

- 12V DC and 24V DC Models
- 115dB single tone siren
- Mainly used with control panels with no internal siren driver

VEHICLE ALARM ACCESSORIES



Ultrasonic Sensors For Detecting Body Movement Inside A Hardtop Vehicle

Part No: UD6



For detecting body movement inside the cabin of a hardtop vehicle. Easy to connect to most alarms via negative output trigger wire.

- Ultra compact sensors
- Frequency: 40 kHz crystal locked
- Adjustable sensitivity
- 12V DC



Microwave Detector For Detecting Body Movement In A Soft-Top / Convertible Vehicle

Part No: UD5

For detecting body movement inside the cabin of a soft-top / convertible vehicle. Can be hidden behind non-metallic surfaces.



Ultra Bright Flush-Mount 5.0mm 12V DC Flashing LED Light

Part No: FL5

Ultra bright flush-mount red flashing LED light for 'alarm armed' indication.

- 12V DC
- Diameter : 5 mm



Digital Tilt Sensor With 3 Dimensional XYZ Axis Movement Sensing Technology

Part No: TILTSENSE2

Designed to help protect your wheels / detect tow away. This device detects if your car is tilted by more than a couple of degrees. Unlike mercury switches, it does not matter if your car is parked on a slope. The sensor saves in memory the angle position of your car when your alarm is armed & monitors for any changes.



Automatic Electric Window Lifter

Part No: GLU400

Automatically closes 2 power windows when your alarm is armed (2 units required for a 4 door vehicle)

- Dimensions: 70(W) x 115(D) x 27(H) mm



Electric Boot Release Motor

Part No: DL105

Add convenience to your car that is not fitted with an electric (push button) type boot / hatch release.

- Compact design
- Solenoid dimensions: 70(W) x 115(D) x 27(H) mm



2 Stage Vehicle Impact Sensor

Part No: SHOCK2S

Designed to detect any shocks or impacts to your vehicle. The 2 stage system provides a warning alert if a light impact is detected, and outputs to the alarm if a heavy impact is registered.

- 2 stage for more accurate detection
- Prewired female plug
- Adjustable sensitivity with LED test indicator



Standard Pinswitch

Part No: PIN409

Used to detect the opening of a vehicle bonnet, boot or doors. Adjusted by cutting the pin.



Right Angled Pinswitch

Part No: PIN410

Used to detect the opening of a vehicle bonnet, boot or doors. Adjusted by cutting the pin.



Metal Pinswitch

Part No: PINSW

Used to detect the opening of a vehicle bonnet, boot or doors. Adjusted via the screw thread.



Van Sliding Door Switch

Part No: VANSW

For use when installing central locking on vehicles with sliding doors such as passenger & commercial vans.

- Female switch dimensions: 82(W) x 34(D) x 15(H) mm
- Male switch dimensions: 70(W) x 26(D) x 52(H) mm



40 Amp 5 Pin Changeover Relay

Part No: 40ARELAY
Part No: 40ARELAY-24

Commonly used for adding engine immobilisation circuits and connecting electric boot release motors to your system. Also used for central locking interfacing when vehicle does not have regular negative pulse inputs and your alarm / immobiliser also does not already have onboard central locking relays.



Differential Pressure Sensor

Part No: PRESSENSE

The differential pressure sensor detects minute or major changes in the internal pressure of a car; when the alarm is armed, the sensor uses the internal pressure as a baseline. Any changes to this pressure - like breaking a window or prying open a door - result in the sensor detecting the change and triggering the alarm.

- High and Low Frequency Tuners



Dual Zone Microwave Detector

Part No: MDDZ

Can be used to give a warning to anyone coming too close to your vehicle & to trigger the alarm if there is movement inside the cabin. Can be hidden behind non-metallic surfaces.

- Compatible with most alarms
- Tri-colour test LED
- Negative trigger output wires
- Detects perimeter approach & internal movement
- Dimensions: 83(W) x 80(D) x 20(H) mm



CENTRAL LOCKING KITS



Heavy Duty Central Locking Kits

Part No: CLKHD
Part No: CLKHD2D
Part No: CLKHD24V

Add security and convenience to your car that is not already fitted with central locking. Can be key operated or connected to any car alarm or immobiliser with central locking outputs for remote keyless entry. This high quality door central locking kit is ideal for use in both modern and older vehicles which require high torque motors for activating stiff door locking mechanisms.

Kit Includes:

- 1 x control module with negative lock / unlock pulse inputs
- 2 x 5 wire master actuator / door lock motors
- 2 x 2 wire slave actuator / door lock motors
- Full wiring harness & motor mounting hardware

* Kit Available in:

- 4 Door Locking Kit (Model No: CLKHD)
- 2 Door Locking Kit (Model No: CLKHD2D)
- 24Volt Version (Model No: CLKHD24V)



Central Locking Kit - Cable Lock Adapter

Part No: CLKHDCABLE



Use this adapter kit for vehicles fitted with cable type lock actuators.



Heavy Duty Central Locking Motor - 5 Wire

Part No: DLHD101

Individual Central Locking 5-Wire Master Drive Motor

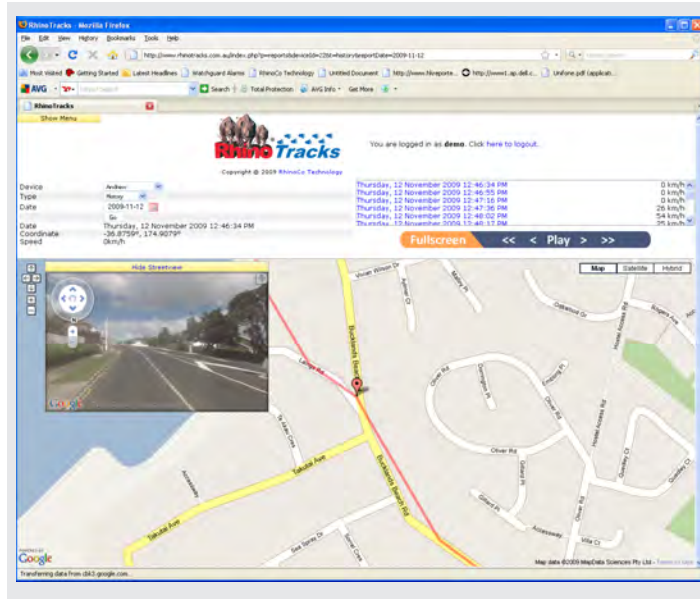


Heavy Duty 2-Wire Central Locking Slave Motor

Part No: DLHD102

Individual Heavy Duty 2-Wire Slave Central Locking Motor

VEHICLE / PERSONAL TRACKER & DRIVING RECORDER SYSTEMS



Common functions across the Rhino GPS Tracker Range include:

- Support for numerous GPS applications such as vehicle location, remote monitoring, remote navigation, fleet management, anti-theft and real-time tracking.
- Provides accident and travel history records.

**** Google Earth is the trademark of Google Inc. The download and use are subject to applicable terms and conditions of Google Inc. RhinoCo Technology is in no way affiliated or associated with Google Inc. or any of its subsidiaries**

*** Provided your vehicle is within your selected mobile phone network carriers GSM coverage, GPS satellites are operational & the vehicle is not undercover.**

Fee is charged quarterly in advance at time of purchase



Standard GPS Vehicle Tracker

Part No: RHINOTRACKS-ST2

The RHINOTRACKS-ST2 is our standard GPS Vehicle Tracker, designed to keep you informed of where your vehicle is and where it has been. The system includes the standard GPS tracking functions, and comes with a GPRS and GPS antenna.

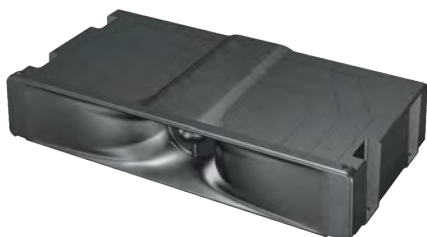
*Suitable for 12 or 24 VDC Vehicles



Portable GPS Personal & Vehicle Tracker

Part No: RHINOTRACKS-PT2

- GPS position tracking function via included GPRS enabled SIM card
- Pocket-sized for portable personal & vehicle tracking
- Locate and track an individual or vehicle 24 hours a day
- Built-in microphone & re-chargeable battery
- SOS Emergency Call Function: Summon help to your exact location. Hold down the SOS button for 5 seconds to automatically call the programmed number. That person can listen to the person in distress.
- Built-in omni-direction GPS & GSM antenna
- Send commands via mobile phone
- Report position every 20 seconds
- Dimension: W40 x L70 x D17mm



Wind Powered Tracking System with built-in GPS and GSM Antenna for Trucks, Trains and Trailers

Part No: RHINOTRACKS-WPT

This unique wind powered GPS tracking system utilises an independent wind power generator to charge and power the unit, removing the need to connect an external power supply. This makes the product ideal for mounting on the top of a trailer, truck or container, where it is out of sight from vandals and in a prominent position to capture the wind.



Mini Tracker for Container or Covert Tracking

Part No: RHINOTRACKS-CTS

This compact GPS unit includes the standard GPS tracking functions and is powered by an inbuilt 3.6V Lithium battery, with a standby operation time of more than 12 days. The system has been designed to be mounted on the back doors of a truck or container. It has built-in GPS and GSM antennas and has both a motion sensor and magnetic door sensor, to easily detect the status of the container doors. The unit housing has a strong magnetic backing, which makes for simple installation and it includes a tamper switch (with trigger reporting) on the main unit for added protection against vandals.

Available by Special Order *



Stand-alone GPS/GPRS/SMS Solar Panel Tracker

Part No: RHINOTRACKS-SPT

The NEW Solar Powered GPS Tracking System is an ideal product for use in logistics applications such as on top of a truck or container. The internal battery is charged by the large photovoltaic Solar Panel, removing the need for an external power source. The unit includes the basic GPS tracking functions, allowing you to locate your vehicle from anywhere in the world where you have an internet connection. The built-in GPS and GSM antenna remove the need for external devices, and the unit's tamper switch (with trigger reporting) provides added protection against vandals.

Available by Special Order *

Available by Special Order *

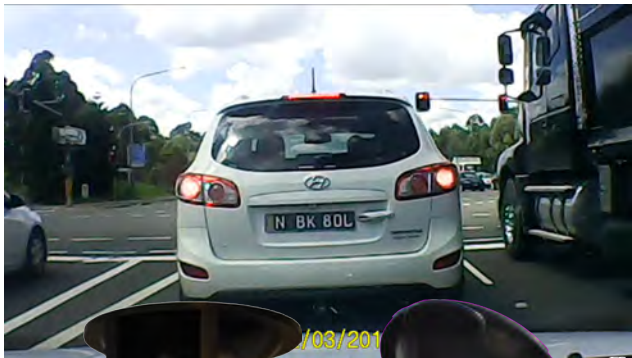


Mobile Digital Video Recorders

The Next Generation of Driving Recorder Systems



*Don't let an accident destroy your driving record -
Make sure you have video evidence!*



Single Camera HD Mobile DVR

Part No: MDVR-HD

Developed to provide added safety, security and peace of mind to individual drivers and larger transport fleets, the MDVR-HD is an in-car driving recorder system.

The internal video camera can record at a resolution of 1280 x 720 pixels , allowing HD quality recording. Along with the camera, the unit also has an inbuilt microphone for audio recording. The unit includes a bracket which allows it to be easily attached to the windshield of a motor vehicle. The unit includes the footage viewing software.

Easy Installation

Simply install the unit on the windscreen, provide power by connecting the unit to the auxillary socket and turn the car on. The unit will automatically begin recording.

Manual/Event Recording

The unit includes an Emergency Recording Button, allowing the user to initiate recording whenever they wish.

Camera	1 x CMOS Image Sensor
Video Resolution	1280 x 720
Audio	Internal Mic
Memory	Supplied with 4GB SD Card, Maximum Memory 32GB
Power	DC 12 ~ DC24V



2 Camera Mobile DVR with GPS

Part No: MDVR-TAXIv3

The MDVR-TAXIv3 represents the next generation of in-car GPS video recording systems. It provides an ideal video surveillance solution for in-car use, when you're wanting to record the driver's general road view. The unit includes both compact mounting brackets, and a windshield cradle to allow you to mount the unit to the windshield of the vehicle. The built-in GPS module provides location, time of event and vehicle speed. The internal cameras capture clear images when the car is driving or stationary (when power is supplied). Simply remove the SD memory card from the unit and connect to your Windows PC for viewing using the supplied USB SD card reader.

Constant Recording Function

The product constantly stores video from both cameras, voice, GPS location, speed and time information on the SD card. When the amount of recorded data exceeds the capacity of the SD memory, the oldest files get overwritten.

Event Recording Function

If the impulse sensed by the G-sensor exceeds a specific limit, or the user presses the emergency recording button, the video file containing 15 seconds of data prior to the event and 15 seconds into the event is automatically stored and transferred to the EVENT MOVIE folder on the SD card.

Video and Voice Data Playing & Analysing Function

The user can play recorded video and information, using the software provided with the product, and easily analyse velocity, coordinates, time and GPS location.

Camera	2 x CMOS Image Sensor
Video Resolution	640 x 480
Audio	Internal Mic
Memory	Supplied with 4GB SD Card, Maximum Memory 32GB
Power	DC 12 ~ DC24V



(rear view)



4 Channel Mobile Digital Video Recorder with GPS Receiver

Part No: MDVR-GPSV2

The NEW Rhino 4 Channel Vehicle Mobile Digital Recorder with GPS Receiving Unit is the ideal product for a number of applications, including:

- Monitoring driver behaviour
- Proving deliveries have been made
- Providing video evidence in the event of an accident.
- GPS Vehicle Tracking on playback

The unit includes an A/V Input loom to allow you to connect up to 4 cameras to the device (For recording views such as front view, rear view, driver view, passenger/cargo view). The recorded footage is stored on the removable 2.5" Hard Drive, and can be backed up via USB.

The functionality of the unit can be increased through the use of optional accessories, such as a Driver Action Detecting Box (To provide notifications when turn signals are used, when brakes are applied, when doors are opened and other similar functions)

* Hard Drive Not Included

VEHICLE REVERSING KITS



Rearview Mirror with 4.3" TFT-LCD Inbuilt Monitor & Number Plate Camera Kit

Part No: VSIDS-RVM4.3

This kit contains all you need to enable safe reversing with confidence, virtually eliminating blind spots. The Monitor/Mirror simply fastens over your vehicles existing rear view mirror and the camera is mounted above your Number plate. When reverse gear is selected, a colour video image is instantly displayed on the in-built 4.3" TFT LCD screen.

- Video display turns on automatically while reversing
- Inbuilt 4.3" colour TFT-LCD screen
- Monitor resolution: 480x 234 pixels
- Anti-glare blue glass mirror
- Secondary video input available
- Power: 12VDC (10W maximum power consumption)

Camera:

- 8 x infrared LEDs offer enhanced night time operation
- Easily mounts above your number plate
- 110Deg. horizontal viewing angle
- Power 12VDC 200mA

VEHICLE PARKING SENSORS



4 Sensor Reversing Kit with 'Audible Alert'

Part No: REVSENSE4B

This device is designed to aid drivers by detecting physical objects when reversing or parking. When reversing, the advanced ultrasonic sensors will detect obstacles within 1.5 metres from the rear of your vehicle.

- Detection Range - 0.2 ~ 1.5m
- 4 x Ultrasonic Sensors - 40KHz
- Digital Control Box
- Speaker for audible alert
- 12 Volt DC - 20~200mA

WARNING: Both reversing cameras and parking sensors are designed only as an aid to drivers. They should never be considered as a substitute for normal driver responsibility. Proper driving technique and use of mirrors whilst reversing should always be observed by the driver.

VEHICLE CAMERAS & MONITOR

Common Specifications

Horizontal Resolution	420 TVL
Image Sensor	1/4" CMOS
Lens Angle	170°
IP Rating	IP67 (Waterproof)
Power	DC 12V

Part No: VSDS-ABCAM



Number Plate Mounted Colour Reversing Camera with Infrared LEDs

Part No: VSDS-NPCAMKIT

This Reversing Camera simply mounts above your number plate and once connected to one of Rhino's In-Vehicle LCD Monitors will display a clear colour image.

- 8 x infrared LEDs offer enhanced night time operation
- Easily mounts above your number plate
- Camera can be tilted up and down to provide the best view
- 110° Horizontal Viewing Angle
- Compatible with Rhino's full range of in-vehicle LCD display monitors or any other LCD Display
- Power 12VDC >=200mA

Part No: VSDS-FMCAM



Part No: VSDS-FBCAM



Part No: VSDS-MINICAM



Part No: VSDS-BUMPCAM



Part No: VSRVM-CBL10



10m Video & Audio Cable for Truck Camera

This is a 10m RCA (Video and Mono Audio) cable.



7 Inch LCD Monitor With Stand & Remote Control - Dual Video Inputs

Part No: LCD7

- Display size: 7 inch
- Aspect ratio: 16:9
- Resolution: 234 x 480pixels
- Dual video inputs (Video1 & Video2)
- Multi-purpose LCD monitor for VCD/DVD/TV/GPS
- Full function remote control
- Power supply: DC 12V
- Power consumption: 7W
- Dimension: 195 x 140 x 25mm

WARNING: Both reversing cameras and parking sensors are designed only as an aid to drivers. They should never be considered as a substitute for normal driver responsibility. Proper driving technique and use of mirrors whilst reversing should always be observed by the driver.



Power Supplies, Cables, Connectors & Accessories

BATTERIES, POWER, LEADS & CONNECTORS

Batteries	59
AC/DC Power Supplies	59
Leads & Connectors	59
Cables	61
Uninterruptible Power Supplies	62
CCTV Power Supplies	62

TOOLS

Tools	63
-------	----

BALUNS & VIDEO PROTECTION EQUIPMENT

Video Baluns	63
Video Balun Rackmount Panels	64
Video Surveillance Protection Equipment	64
Video Amplifiers & Distributors	64

REMOTE CONTROLS & ACCESSORIES

Remotes & Frequency Counter	65
Universal Air Conditioner Remote	66
Alarm Padlock	66

BATTERIES

**CR2450 3V Lithium Battery****Part No: CR2450BULK**

Suits:
- PIRW3
- WREEDI

**3V Lithium Battery - CR2025****Part No: CR2025BP**

Suits: RCTX3-T

**CR2032 3V Lithium Battery****Part No: CR2032BP**

Suits many general purpose remote controls

**3V Lithium Battery - CR1616****Part No: CR1616BP**

Suits: GTTX / GTSTX / GTRTX / RCTX4-U

**Remote Control Battery - 12V, Type 23A****Part No: TX12V23A**

Suits: PTX, GLTX

**12V DC 1.2AH Sealed Lead Acid Battery****Part No: D12V1.2
Part No: D12V7**

- 12VDC
 - Maintenance free sealed lead acid battery
 - Non-spillable construction design
 - High quality and high reliability
 - Low self discharge characteristic
 - Power failure backup battery
- *Available in 1.2AH and 7AH versions*

**12V 350mA Fully Automatic Sealed Lead Acid Battery Charger****Part No: PSLEADCHRG**

AC / DC POWER SUPPLIES

**Switchmode Power Supplies**

PS5VDC1AMP	5 Volt DC	1000mA	DC Plug
PS5VDC500MA	5 Volt DC	500mA	DC Plug
PS12VDC500MA	12 Volt DC	500mA	DC Plug
PS1500SM	12 Volt DC	1500mA	DC Plug
PS5000SM	12 Volt DC	5000mA	DC Plug
PS16VAC	16 Volt AC	1500mA	Bare Wire
PS18VDC	18 Volt DC	500mA	DC Plug
PS19V2A	19 Volt DC	2000mA	DC Plug
PS24VDC2AMP	24 Volt DC	2000mA	DC Plug
PS24VAC2AMP	24 Volt AC	2000mA	DC Plug

LEADS & CONNECTORS

**DC Power Jack to Jack, Coupler****Part No: VSDCJ2JC****RCA To BNC Adaptors****Part No: VSFR2B**

Male RCA to Female BNC adaptor

**BNC To RCA Adaptors****Part No: VSFB2R**

Male BNC to Female RCA adaptor.

**BNC / 'T' Connector****Part No: VSFBTA**

- BNC - T Connector

**BNC Connectors****Part No: VSFBNC
Part No: VSFBNC3**

- BNC (Standard compression type)

Available Models:

- VSFBNC (For RG59U 750 Ohm Coax Cable)
- VSFBNC3 (With Separate Pin. For RG59 Coax Cable)



High Quality Compression BNC Plug

Part No: VSFBNC6

- For RG6 Cable



High Quality Compression BNC Plug

Part No: VSFBNC59

- For RG59 Cable



BNC Jack to Jack Bulkhead

Part No: VSFBNCBULKHEAD



Twist BNC Connector

Part No: VSFBNCTWIST

- Installer can fix this BNC plug by hand
- More reliable than crimp style
- RG59



RCA Plug to F-Type Jack

Part No: VSFRFPT



F-Type Plug to BNC Plug

Part No: VSFFBPB



F-Type Plug to RCA Jack

Part No: VSFFPRJ



F-Type Plug to BNC Jack

Part No: VSFFPBJ



BNC Plug to RCA Plug

Part No: VSFBPRP



BNC Plug to F Jack

Part No: VSFBPFJ



Inline BNC Connector, Socket to Socket

Part No: VSFB2B

- BNC Socket to BNC Socket



BNC Plug to Plug 6" Adaptor Cable

Part No: VSBNCP2PAC



RCA Plug to BNC Jack 6" Adaptor Cable

Part No: VSRCAP2BNCJAC



36" Cable with 12VDC Power Plug on Single End

Part No: VSPP36C



DC Power Plug to Screw Terminal

Part No: VSDCCABLE

DC Plug Dimensions: 5.5 mm Outer Diameter, 2.1mm Inner Diameter.



36" Cable with Power Socket on Single End

Part No: VSPP36C



Power Plug to Power Plug 6" Adaptor Cable

Part No: VSP2PAC



1 Female to 2 Male Power Couplers

Part No: VSDC1F2M



Power Socket to Screw Mount 6" Adaptor Cable

Part No: VSPP2SMAC



5-Way Power Splitter

Part No: DC4CHLOOM

- One DC Power Jack Input
- Five DC Power Jack Outputs



Pre-terminated Combined Power & BNC Video Leads

Part No: RCA4CHLOOM10M

Part No: RCA4CHLOOM20M

Part No: RCA4CHLOOM30M

Pre-terminated cables with no crimping required. Your plug & play solution! Please note: The above power / video leads are not suitable for cameras which draw more than 700mA of current.



Power Converter - Max 36VAC/DC convert to 12VDC Adaptor

Part No: VSPOWCONVERTER

- Max 36V AC/DC converted into 12VDC with power adapter connector.
- 1 Amp max. Regulator



Connector Strip with Screw Terminals for Distributing Power to Cameras

Part No: VSTBB

- One Input
- 8 Outputs
- Polarity Markings



Low Voltage Battery Cut-Off

Part No: VSPOWCUTOFF

This Low Voltage Battery Cut-Off connects to your 12 or 24VDC power supply or alarm panel and prevents the complete discharge of the backup batteries. The product has an adjustable voltage knob, allowing you to calibrate the voltage cut-off range to suit your requirements, and the Master On/Off switch easily turns On/Off both AC and DC power to the control panel or power supply.



RCA Line Plug Male - Red

Part No: VSFRLPR



RCA Line Plug Male - Black

Part No: VSFRLPB



RCA Line Plug Male - Yellow

Part No: VSFRLPY



RCA Line Socket Female - Red

Part No: VSFRLSR



DC Power Connector



Part No: VSFDCP
Part No: VSFDCPF2.1
Part No: VSFDCP2.5

DC Power Connector Plug 2.1mm (Model: VSFDCP)
DC Power Connector Socket 2.1mm (Model: VSFDCPF2.1)
DC Power Connector Plug 2.5mm (Model: VSFDCP2.5)



RCA Extension Leads (3 x RCA to 3 x RCA)

Part No: RCA315
Part No: RCA330

1.5m (Model: RCA315)
3.0m (Model: RCA330)



Replacement 16ch BNC Lead for VIP Vision Analogue DVR

Part No: OCTOBNCN

This is a replacement 8 Channel BNC lead for VIP Vision capture card.

CABLES



Figure 8 Cable 14 x 0.2mm / 100m Roll

Part No: DF8C



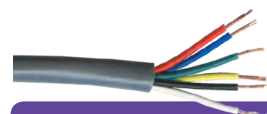
Figure 8 Cable 24 x 0.2mm / 100m Roll

Part No: DF8C2



4 Core Cable 4 x 14.20mm Stranded 100m Roll

Part No: D4CC2



6 Core Alarm Cable 6 x 7/0.2mm Stranded 100m Roll

Part No: D6CC



Full Copper RG59 75Ohm Coax Cable 100m/R

Part No: DCOAXFC



100m Roll Combined RG59 Coax and Power Cable - Black 95% Braiding

Part No: DCOAXPWR24FCBP

- Combined coax/power cable
- 100% copper conductor
- Fig 8 - (2 x 24/0.2mm Stranded)

UNINTERRUPTIBLE POWER SUPPLIES



Professional Series

Model	Watts	Style
UPS600VA	360	Tower
UPS1000VA	600	Tower
UPS1400VA	840	Tower
UPS2200VA	1320	Tower

Suitable for standalone DVRs, Workstations and Printers.

- Wide input voltage window
- Boost and buck AVR
- Compatible with generators
- Provides LED and audible alarm function
- Surge protection
- Protection for short circuit and battery low voltage
- Automatic diagnostic on startup



Enterprise Series- 700W

Model	Watts	Style
UPS1000VAXC	700	Tower
UPS1000VAXCRM	700	Rackmount
UPS2000VAXC	1340	Tower
UPS2000VAXCRM	1340	Rackmount
UPS3000VAXC	2100	Tower
UPS3000VAXCRM	2100	Rackmount

- Same unit can be used as tower or rack mount
- Hot swappable battery
- Selectable input/output voltage
- RS232 and USB communication
- Built in voltage stabiliser
- Line interactive
- True sine wave output
- Simple control and compact design
- SNMP compatible allowing web control and monitoring
- Generator compatible

CCTV POWER SUPPLIES



12VDC 9Amp 18 Output CCTV Power Supply

Part No: PS12V10A18CH

- Outputs can be connected parallel for connecting cameras with >500mA draw
- Not suitable for use outdoors
- Efficient compact design
- 18 individual 500mA fused outputs
- Lockable metal housing
- Output Power: 145W
- Input Voltage: 240V AC
- Output Current: 18 x 500mA fused outputs (9Amp Continuous-10Amp Peak)
- Dimensions(mm): 312(H) x 205(W) x 50(D)



24VAC 18 Channel 10A Switch Mode CCTV Power Supply

Part No: PS24VAC10A18CH

Designed specifically for use in the CCTV industry, this 24VAC switch mode power supply can be used to provide power to 18 CCTV cameras (cameras rated at less than 500mA).

- Input Voltage can be selected between 110V and 220V
- Voltage Adjustment
- Panel Isolation Switch ON/OFF
- Parallel CCTV Camera Connection: For CCTV Cameras rated at more than 500mA, multiple outputs can be connected in parallel to increase the total output current.

CABLE TOOLS

**7.6 inch Professional Compression Tool****Part No: VSCOMPTOOL**

- Adjustable and changeable for waterproof connectors.
- Suitable for F/RCA/BNC RG-59, 6 (4C,5C) waterproof connectors.
- Use with:
 - VSFBN6
 - VSFBN59

**Coaxial Connector Cable Crimping Tool with 5 Jaws****Part No: TSA50**

- Designed to crimp BNC/TNC connectors to RG58C/U and RG62 coaxial cable as well as the centre pin to the centre conductor
- Insulated handle and tension 6 position adjustment
- Hex sizes: 1.7, 2.5, 5.4, 6.5, 8.2mm
- Use with:
 - VSFBN6
 - VSFBN3

**Coaxial Cable Stripping Tool****Part No: VSA18**

- Coaxial cable stripper which suits RG58/59/6 cable
- Fitted with 3 blades to suit 4 cable diameters
- This 3 position stripper will strip cable revealing braid, dielectric and centre conductor

**5-in-1 Multi Purpose 12VDC Tester****Part No: VSVOLTTESTER**

Although compact in size, this 5-in-1 Multi Purpose 12VDC Tester is an essential product for installers who need to perform troubleshooting tests while installing CCTV surveillance systems. The five tests which the unit can perform are:

1. Voltage Test
2. Load Test
3. Voltage Drop Test
4. PTC Fuse Test
5. Polarity

Cable Tester - Tone Generator & Probe**Part No: VSCABLETESTER**

Features (Probe):

- Sound or illumination and vocal-light indicating for choice.
- Volume adjusts.
- Low voltage warning.
- Features(Tone Generator):
 - Choose switch of multiple frequency signal and single signal.
 - Syllogistic remote switch applies for control operation mode.
 - Three color pilot light, display circuit polarity,continuity and testing voltage.
 - Red and black test cartridge,standard four wires plug.
 - Fine molding,expedient operation.

VIDEO BALUNS

**Quad Passive Video Balun - RJ45 Jack to 4 BNC Female Connectors****Part No: VSQUADBALUN**

- For both camera side and monitor side.
- Camera/Monitor Connectors: 4 BNC Female.
- Wire Connector: RJ45 Jack.
- Wire required: CAT5, or better.
- Frequency response: DC to 6.5 MHz
- Attenuation: 75 ohm to 100 ohm about 0.4dB
- Impedance: Coax/75 ohm, UTP cable/100 ohm.
- Coaxial Cable: unbalanced, 75 ohm.
- UTP C5: balanced, 24 AWG, 100 ohm.

**1 Channel Video/Audio Balun****Part No: VSQC-3424**

This 1 channel balun TR/TX not only has a BNC socket, but it also comes with 2 RCA sockets for audio transmission support. This device converts video camera cabling and increases transmission distance by converting the signal from coaxial to CAT 5 Cable.

**Monitor Side BNC Male Video Active Balun****Part No: VSBAL-MBMAA**

- Monitor Side
- BNC Male to Screw Terminal
- 12VDC Power Plug
- 1800m CAT5 Active-Active Transmission Distance

**Camera Side BNC Male Video Active Balun****Part No: VSBAL-CBMAA**

- Camera Side
- BNC Male to Screw Terminal with DC Power Plug and Socket Pigtail
- 12VDC Power Plug
- 1800m CAT5 Active-Active Transmission Distance

Camera Side BNC Male Video Active Balun**Part No: VSBAL-CBMAL**

- BNC Male to Screw Terminal with 12VDC Plug Pigtail
- 1800m CAT5 Active-Active Video Transmission Distance
- Model also available with inbuilt surge protector

1 Channel Active Balun, Camera Side**Part No: VSBALACTIVE**

- 1 Channel Active Camera Side Video Balun.
- 12VDC 50mA
- Connector for camera: BNC Male, BNC Female, F Male, F Female, 20cm BNC Male Cable
- Screw Terminal Wire Connector

VIDEO BALUN RACKMOUNT PANELS



*Balun Not Included

19" 1RU Quad Video Balun Panel (Unloaded) with Designation Strip

Part No: VSQC-3427RMP

CCTV Quad Balun Blank Panel Accessory with Designation Strip
This 16 port rack panel is used in conjunction with the VSQC-3427RM to create a professional rack mount solution.

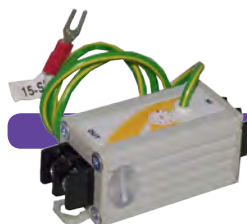


Quad Video Passive Balun BNC Female Bulkhead Panel Mount

Part No: VSQC-3427RM

BNC Female to RJ45 Jack Shielded CCTV Balun Quad - Rack Mountable

VIDEO SURVEILLANCE PROTECTION EQUIPMENT



UTP Data Surge Protection - Terminal Block Simple 'in-out' Surge Protection for PTZ Controllers or Data Wires

Part No: VSSPU

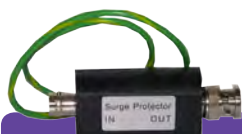
- Surge protection attack time: 100ns
- Maximum surge current: 5000A
- Dimensions: 45 X 25 X 25mm
- Weight: 74g



UTP Video & Data Surge Protection - RJ45 Connectors Simple 'in-out' Surge Protection for IP Cameras & Network Devices

Part No: VSSPR

- Surge protection attack time: 100ns
- Maximum surge current: 50,000A
- Dimensions: 32mm X 45mm X 72mm
- Weight: 105g



Coaxial Surge Protection - BNC Connector Simple 'in-out' Surge Protection for CCTV Cameras

Part No: VSSPB

- Surge protection attack time: 100ns
- Maximum surge current: 5000A
- Dimensions: 78mm X 25mm X 25mm
- Weight: 80g

Ground Loop Isolator

Part No: VSVSI



- 75 ohm BNC Male to 75 ohm BNC Female
- Transient Voltage Suppressor: 12 Volts rms
- BNC Male with 100 mm miniature coaxial cable input and BNC Female output
- Isolation Voltage: 750 Volts DC
- Insulation Resistance: >100 M ohm
- Dimension: 50 x 30 x 25 mm

VIDEO AMPLIFIERS & DISTRIBUTORS



1 Video Signal to 1 Video Output

Part No: VSAV11BNCF

- Video Input/Output: 1/1
- Video Connector: BNC Female
- Power Consumption: 12VDC 150mA



1 Video Signal to 2 Video Output

Part No: VSAV12BNCF

- Video Input/Output: 1/2
- Video Connector: BNC Female
- Power Consumption: 12VDC 150mA



1 Video Signal to 4 Video Output

Part No: VSAV14BNCF

- Video Input/Output: 1/4
- Video Connector: BNC Female
- Power Consumption: 12VDC 150mA



2 Video Signal to 4 Video Output

Part No: VSAV24BNCF

- Video Input/Output: 2/4
- Video Connector: BNC Female
- Power Consumption: 12VDC 300mA



4 Video Signal to 4 Video Output

Part No: VSAV44BNCF

- Video Input/Output: 4/4
- Video Connector: BNC Female
- Power Consumption: 12VDC 500mA

Single Button Remote Control, available in Fixed and Rolling Code



Part No: GLTX
Part No: GLRLTX

- GLTX - Fixed Code
- The GLTX is used for the Rhino LS and GA car alarms
- GLRLTX - Rolling Code

3 Button Code Hopping Remote with LED Torch Function - Suits JAG, RA & RAM



Part No: RCTX3-T

- 3 button remote With LED torch
- As supplied With Rhino JAGV2, RAV3 & RAMV2 Car Alarm
- Also compatible with Rhino RCX, RES4601V2, WGSMS2010

4 Button Code Hopping Remote Control for RAV3



Part No: RAV3TX

- As supplied with the Rhino RA (V3) and Jag (V3) car alarm
- Also compatible with Rhino RCX, RES (4601V2) and WGSMS2010

2 Button Code Hopping Remote - Suits RCX, RES, WGUARDSMS & WGUARDMARINE



Part No: GTTX
Part No: GTSTX
Part No: GTRTX

Yellow LED: Code Hopping, suits Rhino RCX and RES4601V2 immobilisers, WGUARDSMS2010

Red LED: Code Hopping, suits Rhino GTS Car Alarm

Green LED: Fixed code suits Rhino GTR Car Alarm

4 Button Code Hopping Remote - As supplied with Rhino RXPROR4



Part No: RCTX4-U

- As supplied with Rhino RXPROR4. Optional use with Rhino RCX, RES, JAG, RAM, WGSMS2010
- Colour coded buttons with printed numbers to match GTTX / RCTX3-T i.e button 1 on Your RCTX4-U is the same function as button 1 on your GTTX remote

Programmable 4-Button Replacement Remote!

For your old Car Alarm, Home Alarm, Garage Door or Electric Gate.



UHF Learning Programmable 4 Button Replacement Remote

Part No: PTX



The Rhino PTX Remote Control can duplicate a majority of fixed code remote controls (not code hopping remotes). Fixed code means that each time the remote control is pressed, the same code is transmitted each time. The PTX remote has four buttons so that it will universally suit most remotes i.e. some remotes have just one button for arming / disarming, where others may have separate buttons for multiple functions. The same code can be copied onto multiple buttons if desired. If your original remote has a function controlled by pressing multiple buttons together, you must duplicate that code to a single button on your Rhino PTX.

- 4 channel programmable remote control
- Many uses including car alarms, home alarms, panic buttons, garage doors...
- Copies most radio frequency fixed code remote controls
- Learns in seconds
- 255-500 MHz adjustable frequency
- Battery included

Frequency Counter for Scanning & Adjusting Remotes



* Remote Control Not Included

RF Remote Control Frequency Counter

Part No: FREQCOUNTER

This tool is ideal for both home and vehicle technicians to quickly check if UHF remotes are working and re-tune to correct frequency if required.

- Large easy to read display
- Reads 250 ~ 500 MHz
- Power supply included

Universal Air Conditioner Remote

Part No: RS10



This universal air conditioner remote control can control over 100 different world famous brands of air-conditioners, including Fujitsu, Daikin, Hitachi, Mitsubishi and Samsung.

This remote is the ideal product to replace lost or damaged air conditioner remotes and can control multiple functions including fan speed and air swing direction.

Features:

- Low power consumption.
- Long distance transmission range
- Simple to set up and operate
- Clear LCD screen, easily shows functions such as temperature and operating mode
- Elegant and simplistic design.
- Lightweight (56 grams)
- Dimensions (mm): H135 x W47 x D23
- Requires only 2 x AAA batteries to operate

ALARM PADLOCK



Alarm Padlock

*with ear-piercing ultra loud siren
when movement or shock is detected!*

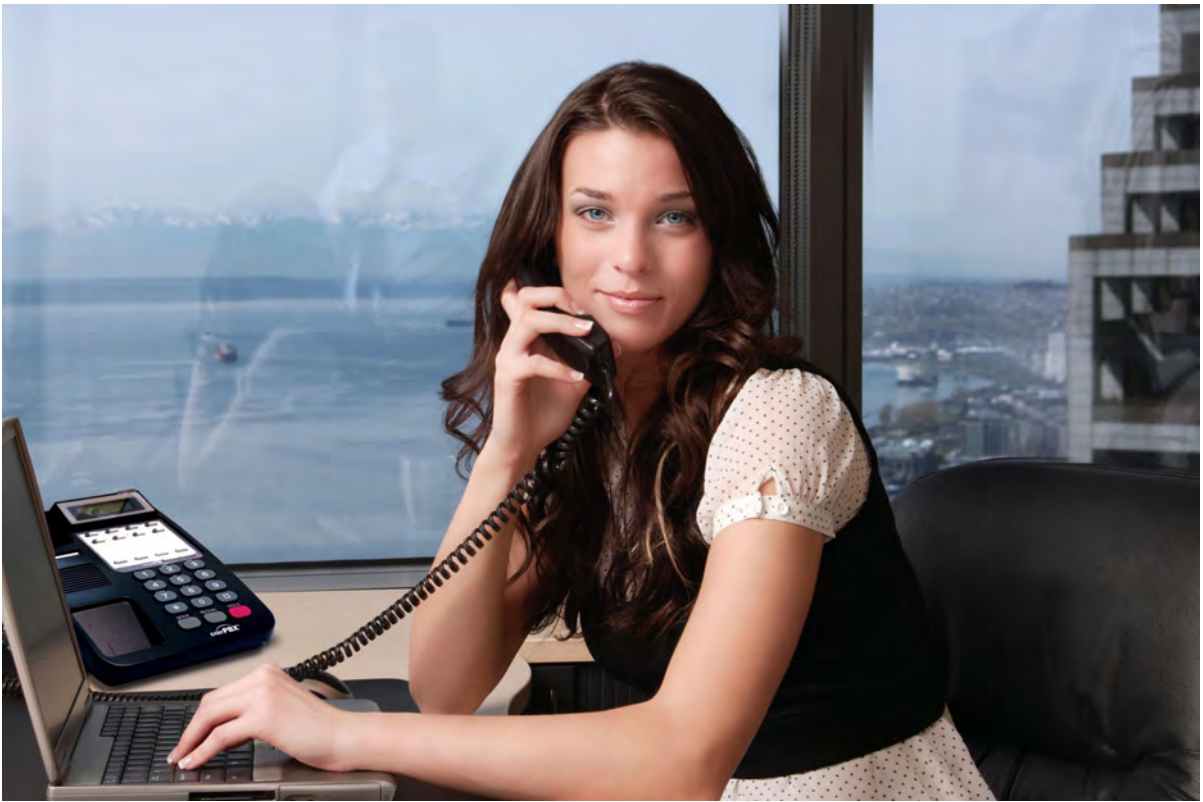
Watchguard 110dB Siren Alarmed Padlock

Part No: WGALPAD

This Security Alarm Padlock, when armed, emits an ear-piercing ultra loud sound when movement or shock is detected, increasing the chances of scaring away thieves and protecting your valuables. The padlock features a 110db internal siren which sounds if the lock is moved, touched or knocked after it has been armed. The padlock has been manufactured to the highest standards, with a stainless steel shackle and hardened zinc alloy body. The body of the padlock has been powder-coated providing extra corrosion, water and weather resistance. The versatility of the padlock make it suitable for use in any number of applications, including garden sheds, gates, garages, lock-boxes, bikes, toolboxes, trailers, caravans, lawn mowers and garden machinery.



IDEAL FOR: Sheds, Gates, Garages, Lockups, Bikes, Toolboxes, Trailers, Caravans, Lawn Mowers, Garden Machinery, etc.



Business Phone Systems

PBX BUSINESS PHONE SYSTEMS

Business Phone Systems
Business Phone System Accessories

68
70

Cisco Small Business Communications Series



Affordable Unified Communications for Small Business

Small businesses no longer need to compromise on voice quality or features for unified communications. With a Cisco® Small Business solution, they can have the quality, peace of mind, and investment protection of a business-class solution at an affordable price.

For small businesses with up to 24 phones per location, the Cisco Small Business Unified Communications 300 Series, model 320W, is a complete unified communications system that delivers more—integrated voice and data plus additional features designed and built just for small business. As a part of the Cisco Small Business product family, this easy-to-use solution delivers advanced features to better connect employees and serve customers, all on a highly secure Cisco network.



Features and Benefits

The Cisco Unified Communications 320W provides an easy-to-use solution for your small business network.

- **Low cost:** Value-based IP telephony design helps save small businesses money. Customers can choose Cisco SPA300 or SPA500 IP phones or use analog phones for locations where Ethernet cabling is not available.
- **SIP trunking:** Use of SIP trunks helps reduce monthly charges by providing an alternative to traditional phone lines.
- **Compact size:** Designed for small office spaces, the Cisco Unified Communications 320W can be installed as a desktop unit or mounted on a wall.
- **Comprehensive feature set:** Innovative key system and small private branch exchange (PBX) capabilities are available with easy-to-use Cisco SPA 300 and SPA 500 Series IP Phones, helping improve productivity.
- **Easy installation and changes:** Web-based configuration utility uses a setup wizard for quick deployment and easy changes.
- **Investment protection:** Businesses that are growing rapidly can use most components of the solution with other Cisco Unified Communications solutions, providing industry-leading investment protection.
- **Peace of mind:** Cisco Unified Communications solutions deliver the solid reliability you expect from Cisco. All solution components have been rigorously tested to help ensure easy setup, interoperability, and performance.



Package Includes

- 1 x Cisco UC320W Unified VoIP Telephone and Wireless Hub
- 8 x Cisco SPA525G VoIP Handset
- 1 x 8 Port Power-over-Ethernet Switch
- 8 x 20 metre network cables
- 1 x 1 metre network cable



Feature	
Supplied Handsets	8
Handsets Expandable To	24
Supported PSTN Lines	4
Expandable PSTN Lines	12
Gigabit Ethernet WAN Ports	1
Gigabit Ethernet LAN Ports	4
PSTN Line (FXO) Ports	4
PSTN Phone (FXS) Ports	1
Capacity	
Simultaneous Calls	12
Simultaneous Voicemail	4
Automated Attendants	8

PBX BUSINESS PHONE SYSTEM

COMPLETE BUSINESS PHONE SYSTEM

EASY TO USE, EASY TO PROGRAM



Phone Available in White

Digital PBX Keyphone System with 4 x LCD Handsets

Part No: EASYPBX-PACK4W

Part No: EASYPBX-PACK4B

System Includes:

- 4 x LCD Display Handsets
- 1 x PBX Central Control Module

Main Features:

- Supports up to 16 handsets and 6 incoming PSTN lines
- Expansion cards available (Voice Mail, Automated Attendant, Automated greeting, Caller ID, Door phone, VoIP trunk / extension)
- Automatic Call Distribution
- Call transfer, Call Forward, Call Park, Call Barring, Call Queuing, Call Override
- Conference Calling
- Do not disturb
- User set alarms
- Least Cost Routing
- Time Based Routing
- Internal or External hold music
- Paging and Intercom
- Distinctive Ring
- Speed and one touch dialing
- Optional external battery backup

PBX PHONE SYSTEMS ACCESSORIES

**8 Line Digital Keyphone****Part No: EASYPBX-PHONE8W**

- 12 programmable flexible function keys
- Two wire installation, fully hands-free
- Displays time, date and phone name on standby screen.
- Can display caller ID with optional expansion card
- White colour

**12 Line Digital Keyphone****Part No: EASYPBX-PHONE12B**

- 16 programmable flexible function keys
- Two wire installation, fully hands-free
- Displays time, date and phone name on standby screen.
- Can display caller ID with optional expansion card
- Black colour

**24 Line Digital Keyphone****Part No: EASYPBX-PHONE24W****Part No: EASYPBX-PHONE24B**

- 24 programmable flexible function keys
- Two wire installation, fully hands-free
- Large LCD display with backlight
- Displays time, date and phone name on standby screen.
- Extra function keys may be used as an operators switchboard
- Can display caller ID with optional expansion card
- * Phone also comes in Black colour (Model: EASYPBX-PHONE24B)

**1 Meter Telephone Extension Leads****Part No: PHONEEXT1M**

- Flexible multistranded wire
- Fitted with 6P4W modular plugs
- Can be used with the 606 adaptor above

**Telephone Extension Leads****Part No: PHONEEXT10****Part No: PHONEEXT20****Part No: PHONEEXT30**

- Flexible multistranded wire
- Fitted with 6P4W modular plugs
- Can be used with the 606 adaptor above
- Available in 10m, 20m or 30m lengths

**Australian 606 to US Modular Adaptor****Part No: 606M2**

- Often used in older buildings
- 6P2W adapter

**LINKSYS VoIP Analogue Telephone Adapter****Part No: VOIP-VOICEBOX**

- Enables legacy PBX hardware for VoIP
- Provides routing and QoS functions, allowing you to share your existing internet connection without sacrificing call quality
- Configuration via a simple web interface
- Includes two standard telephone sockets for phones or fax machines with independent phone numbers
- Compatible with all common telephone features, such as Caller ID, Call Waiting and Voicemail

**Unified VoIP and wireless networking telephone hub****Part No: CISCO-UC320W**

The CISCO-UC320W is a simple, powerful and easily installed all-in-one VoIP telephone hub. This singular unit combines a VoIP telephony management system, with SIP trunking, call processing, voicemail and conferencing, with a four port GB/s network switch and a wireless 802.11 b/g/n wireless access point. Supports CISCO-SPA525G wireless handsets.

Main Features:

- Supports up to 12 PSTN lines
- Supports up to 24 phones (maximum of 4 analogue phones/faxes)
- Web Based setup utility
- 4 1Gb/s ethernet ports
- Voice Mail
- SIP Trunking

**VoIP External FXO Gateway****Part No: CISCO-SPA8800**

When you need to convert incoming PSTN lines for use with your PBX system, or find your current PBX system supports less lines than you need, the CISCO-SPA8800 will slot into place easily, providing you with four FXO ports for incoming lines, and another four FXS ports for legacy handsets. This unit supports standard SIP protocols and data encryption methods.

**5 Line VoIP Handset****Part No: CISCO-SPA525G**

Wirelessly connect to your CISCO-UC320W telephone hub with this handset, or connect wired with PoE or an external power supply.

- Five active lines
- Full Duplex Speakerphone
- QVGA color LCD screen
- Built in VPN client for security

**SPA525G Expansion Module****Part No: CISCO-SPA500S**

Expand the capabilities of your current CISCO-SPA525G handset with this module, providing 32 new programmable buttons with LED status indication.

Programmable Functions:

- Call Transfer
- Line Status Monitoring
- Speed Dial
- DSS
- Busy Lamp Field
- One Touch Transfer
- Call Pickup

**3.5mm Male to Male Audio Lead****Part No: AUDIOCABLE**

- Used to connect the EasyPBX system to a standard hold music source (ie radio)
- Length : 1.2m

1. DEFINITION

The expression "The Company", when referred to in these Terms and Conditions, refers to CORNICK PTY LTD ABN 74 001 621 610.

2. GENERAL

These Terms and Conditions of Sales apply to the sales of goods and services manufactured or supplied by The Company.

Any order received by The Company is deemed to be an order incorporating these Terms and Conditions and no variation or cancellation of any of these Terms and Conditions shall be binding on The Company unless assented to by The Company in writing.

Each order placed by the customer shall be & be deemed to be a representation by it, made at the time that it is solvent & able to pay all of its debts as & when they fall due. Failure to pay The Company in accordance with these terms shall be & be deemed to be conclusive evidence that the customer had no reasonable grounds for making the representation hereof & that the representations were unconscionable, misleading and deceptive.

3. ACCEPTANCE

Any quotation by The Company is not to be construed as an offer or obligation to sell and The Company reserves the right, at its option, to accept or reject any orders received.

4. PRICES

All prices charged/quoted shall be The Company's prices ruling at the date of despatch. Verbal quotations are subject to written confirmation which will be given when requested. All goods are sold and all prices are quoted FOB ex-works The Company unless otherwise specified. The Company reserves the right at any time to make reasonable adjustments of prices in relation to fluctuations in The Company's cost of labour, material, goods or transport and also in relation to any changes in currency exchange rates or duty which affect The Company's costs for imported goods.

Unless expressly noted all prices charged/quoted are exclusive of GST. All government imposts of GST or any equivalent as separately itemised on The Company's invoices are to the customer's account.

5. CANCELLATION OR VARIATION

A contract may, at The Company's option, be terminated in the event of insolvency of the purchaser or the purchaser being placed in liquidation, whether voluntarily or otherwise. A purchaser may only vary an order if such variation is accepted by The Company in writing and any variation or cancellation may only occur on terms which will provide for The Company to be indemnified by the purchaser against any loss or damages. Cancellations will attract a cancellation fee and must be at least 90 days prior to current due delivery date. No cancellation will be accepted on indented products. Re-schedules must be at least 45 days prior to the current due delivery date and any item may be deferred only once, up to a maximum of 90 days from the original requested date.

6. PACKING

Unless otherwise indicated prices include standard cases or packing.

7. DELIVERY

Unless otherwise stated in writing the price quoted is ex The Company's store where stocked. Where delivery is requested beyond this point The Company may, at its discretion, agree to act as agent for the purchaser in this matter and all costs for cartage and insurance will be for the purchaser's account.

8. TERMS OF PAYMENT

Cash on Delivery otherwise expressly agreed to in writing. The Company reserves the right to deliver and invoice any item or items comprising the whole or part of any order. Failure of The Company to deliver any part of an order shall not entitle the purchaser to repudiate the contract.

9. CLAIMS

The following conditions relating to the return of goods for credit apply to all goods returned for this purpose.

9.1 Goods returned must be accompanied by a Delivery Docket stating original invoice number, date of purchase and reason for return.

9.2 Non-standard equipment made to special order cannot be credited under any circumstances.

9.3 Inward freight packing and delivery charges are the responsibility of the purchaser.

9.4 Goods will only be accepted for credit to the extent of that wrongly or over-supplied.

9.5 All returns must be in good order and condition, unused and in original packaging. No claims by the purchaser need be recognised unless made in writing within fourteen days after delivery of the goods to the purchaser.

No claim for damage or resultant expense direct or indirect in respect of any goods shall in any case exceed the invoice price of the goods in respect of any damages or expense shall arise. All damage or expense over and above such invoice shall be the responsibility of the purchaser.

10. RISKS

Risk in the goods purchased shall, unless otherwise agreed in writing, pass to the purchaser upon delivery of the goods to the purchaser or his agent or to a carrier commissioned by the purchaser.

11. PATENTS

To the best of The Company's knowledge goods sold to the purchaser will not infringe any patent, trade mark, registered design or copyright of any third party but The Company shall in no circumstances be liable to the purchaser in respect of any such infringement constituted by the sale or use of the goods.

12. PERFORMANCE AND REPRESENTATION

Any figures or estimates given for performance of goods are based upon The Company's experience and are such as The Company would expect to obtain on test. But The Company will only accept liability for failure to obtain the figures or estimates given when such figures or estimates are guaranteed in writing within specified margins. The purchaser acknowledges that neither The Company nor any person purporting to act on its behalf has made any representation or given any promise or undertaking which is not expressly set out in the contract whether as to the fitness of the goods for any particular purpose or any other matter.

13. CONDITIONS AND WARRANTIES

All conditions and warranties expressed or implied by statute, the common law equity trade custom or usage or otherwise howsoever are hereby expressly excluded to the maximum extent permitted by law. Where so permitted the liability of The Company for a breach of a condition or warranty that cannot be excluded is limited (at The Company's option) to the replacement or repair of the goods or the supply of equivalent goods or the cost of replacing or repairing the goods or of acquiring equivalent goods. The Company shall not be liable in any way whatsoever for indirect or consequential loss or damage whatsoever (whether based on tort or contract or otherwise). It is a condition of this contract that the purchaser shall not use the goods for the installation in or in association with aircraft. Goods are not authorised for use in life support devices, systems intended for surgical implant into the body or for applications intended to support or sustain life or where the failure of the product would ordinarily create a situation where personal injury or death is likely to occur. In the event the goods are so incorrectly used, The Company shall be exempt from all liability whatsoever and the purchaser hereby indemnifies The Company in respect of any claims, demands, suits or proceedings whatsoever resulting from such misuse of the goods. The Company warrants its products to be in conformance with its own plans and specifications and to be free from defects in materials and workmanship under normal use and service for 12 months from the date stamp control on the product, or for products not having a date stamp, for twelve months from the date of original purchase unless the installation instructions or catalogue sets forth a shorter period, in which case the shorter period shall apply. The Company's obligation shall be limited to repairing or replacing, at its option, free of charge for materials or labor, any part which is proved not in compliance with The Company's specifications or proves defective in materials or workmanship under normal use and service. The Company shall have no obligation under this Limited Warranty or otherwise if the product is altered or improperly repaired or serviced by anyone other than The Company. For warranty service, return transportation prepaid, to 9 Hannabus Place McGraths Hill NSW 2756 Australia.

There are no warranties, expressed or implied, of merchant ability, or fitness for a particular purpose or otherwise, which extend beyond the description on the face hereof. In no case shall The Company be liable to anyone for any consequential or incidental damages for breach of this or any other warranty, express or implied, or upon any other basis of liability whatsoever, even the loss or damage is caused by its own negligence or fault. The Company does not represent that the products it sells may not be compromised or circumvented; that the products will prevent any personal injury or property loss by burglary, robbery, fire or otherwise; or that the products will in all cases provide adequate warning or protection. Customer understands that a properly installed and maintained alarm system may only reduce the risk of a burglary, robbery, or fire without warning, but it is not insurance or a guarantee that such will not occur or that there will be no personal injury or property loss as a result.

Consequently, The Company shall have no liability for any personal injury; property damage or other loss based on a claim the product failed to give any warning. However, if The Company is held liable, whether directly or indirectly, for any loss or damage arising under this limited warranty or otherwise, regardless of cause or origin, The Company's maximum liability shall not in any case exceed the purchase price of the product, which shall be the complete and exclusive remedy against The Company. This warranty replaces any previous warranties and is the only warranty made by The Company on this product. No increase or alteration, written or verbal, of the obligations of this Limited Warranty is authorised.

14. TITLE TO GOODS

14.1 Notwithstanding delivery of the goods to the purchaser, until the purchaser has effected full payment for the Goods and any other goods previously supplied by The Company:

- a) legal title to the Goods will remain with The Company;
- b) the risk in the Goods will pass to the purchaser on delivery to the purchaser or its agent;
- c) the relationship between The Company and the purchaser will be fiduciary;

11.2 The Purchaser will:

- a) hold the Goods as bailee for The Company;
- b) keep the goods separate from other goods; and
- c) label the goods so that they are identifiable as the goods of The Company;

14.3 With The Company's consent (which is given) the purchaser is at liberty to sell the Goods, in the ordinary course of the purchaser's business, provided that the money from the sale will:

- a) be held in a separate account in trust for the vendor;
- b) not be mingled with other money; and
- c) not be placed into an overdrawn account

14.4 The purchaser is not an agent of The Company in any sale of the Goods by the purchaser.

14.5 After the happening of an Event of Default, the vendor may without demand retake possession of the Goods and may without notice sell the Goods on such terms and in such a manner as it determines and will be entitled to deduct all expenses incurred. For the purposes of recovering possession and without limiting the generality of the foregoing, the purchaser irrevocably authorises and licenses The Company and its servants and agents to enter any premises where any Goods may be stored and to take possession of the Goods.

15. RECOVERY OF COSTS

The customer will pay to The Company any costs and expenses incurred by it or its solicitors, legal advisers, mercantile agents and other parties acting on the Company's behalf in respect of anything instituted or being considered against the customer whether for debt, possession of any goods or otherwise.

16. FORCE MAJEURE

The Company will not be in default or in breach of any contract with the customer by as a result of Force Majeure. Force Majeure means beyond the reasonable control of The Company and includes any strike or lockout either directly or indirectly by any supplier of goods or services.

17. LEGAL CONSTRUCTION

Except as may be otherwise agreed by The Company, the contract shall be governed by the laws of the State of NSW.

SINCE 1978

RUN WITH US!



WE ARE YOUR ENGINEERING DESIGN HOUSE

INTERNATIONAL HEADQUARTERS AND BRANCHES



AUSTRALIA HEAD OFFICE

9 Hannabus Place, McGraths Hill NSW 2756, Australia
Phone: (+61) 2 9671 6711 Fax: (+61) 2 4577 4885

HABERFIELD BRANCH

223 Ramsay Street, Haberfield NSW 2045, Australia
Phone: (+61) 2 9671 6711 Fax: (+61) 2 9799 2024

VILLAWOOD BRANCH

71 Middleton Road Villawood NSW 2163, Australia
Phone: (+61) 2 9671 6711 Fax: (+61) 2 9743 8590

INTERNATIONAL SALES OFFICES & MANUFACTURING



UK SALES OFFICE

Address: 3B Vernon Drive, Shrewsbury,
SY1 3TF United Kingdom
Phone: (+44) 0845 644 5421
Fax: (+44) 0845 644 5431
Email: sales@rhinoco.co.uk



ITALY SALES OFFICE

Address: 24 Piazza Garibaldi,
98034 Francavilla Di Sicilia (ME) Italy
Phone: (+39) 0942 982416
After Hours: (+39) 090 8969638
Fax: (+39) 0942 680899
Email: sales@rhinoco.it



SOUTH AFRICA OFFICE

Address: Route 21 Corp/ Park, Unit c3
Prospect Close, 311 Regency Drive,
Irene Ext 30, South Africa
Phone: (+27) 12345 6626
Email: sales@rhinoco.co.za



NEW ZEALAND OFFICE

Address: 68d Paul Matthews Drive,
Albany, Auckland New Zealand 0751
Phone: (+64) 9 476 8052
Fax: (+64) 9 476 8059
Email: sales@rhinoco.co.nz



CHINA SALES OFFICE

Phone: (+86) 755 837 45889
Email: china@rhino.com.au



KOREA SALES OFFICE

Phone: (+82) 32 833300
Email: korea@rhino.com.au



TAIWAN SALES OFFICE

Phone: (+886) 6355188
Email: taiwan@rhino.com.au

Specifications may vary without notice. Products may vary from illustrations.

Prices shown exclude TAX and are available to qualified trade / wholesale customers only. For full terms & conditions of sale please visit our website.

RhinoCo Technology Copyright © 2012 All Rights Reserved. Reproduction in whole or part is prohibited without the written consent of the company.

sales@rhino.com.au - www.rhino.com.au

Inspired Electronic Security – Since 1978