



www.vip-vision.com

MODEL: NVR16PRO(PACK)3NP

Professional IP Surveillance Pack

Network Video Recorder with 16 Security Cameras

‘QUICK INSTALLATION GUIDE’



NVR

- *Advanced H.264 Video Compression Technology*
- *Multiplex Operation*
- *Long Recording Duration*
- *Intelligent Video Motion Detection Recording*
- *Remote Network Surveillance & Backup Functions*
- *Easy to operate with USB Mouse or IR Remote.*
- *System Auto recovery after power loss (blackout)*

16 x IP Day/Night Cameras

- *High Quality 1.3MP CMOS Image sensor*
- *IR Night view range of 20 metres*
- *720p Resolution*

POE Network Switch

- *Centralise your cameras away from your NVR*
- *Power and video over the same cable*
- *View over the internet via Smartphone or PC*




HDD NOTE:

This NVR is designed to only work with 24hr rated Enterprise, NAS and Video Surveillance Hard Drives. The use of any other model Hard Drive (including energy efficient drives) may cause your system to fail and void Warranty. NVR Packs come with an approved Hard Drive already installed.

We strongly recommend using the following Seagate Hard Drives:

Name:	Model:	Part Number:
Seagate 1TB Video HDD	ST1000VM002	HD1TBSN
Seagate 2TB NAS HDD	ST2000VN000	HD2TBSN
Seagate 3TB NAS HDD	ST3000VN000	HD3TBSN
Seagate 4TB NAS HDD	ST4000VN000	HD4TBSN

NVR16PRO3NP Package Contents (Before installation, please ensure you have all the parts listed).

	<p>1 x Network Video Recorder with 2TB Hard Disk Drive</p> <ul style="list-style-type: none"> • Advanced H.264 Video Compression Technology for High Quality Images • Easy to Operate • Can be Connected to a PC Network for Remote Viewing & Backup (Software on Disc)
	<p>1 x USB Mouse</p> <ul style="list-style-type: none"> • To operate the NVR <p>1 x IR Remote Control with batteries</p> <ul style="list-style-type: none"> • To operate the NVR <p>1 x HDMI Connection Cable</p> <ul style="list-style-type: none"> • Connect the NVR to a HDMI ready TV or Monitor
	<p>4 x Switch Mode Low Voltage Power Supplies</p> <ul style="list-style-type: none"> • 1 x 12v Power Supply for use with the NVR • 3 x 48v Power Supply for use with in-built POE Network Switch (Pack) • Advanced Switch Mode Technology

Additional NVR16PROPACK3NP Contents (Only included with the NVR16PROPACK3NP)

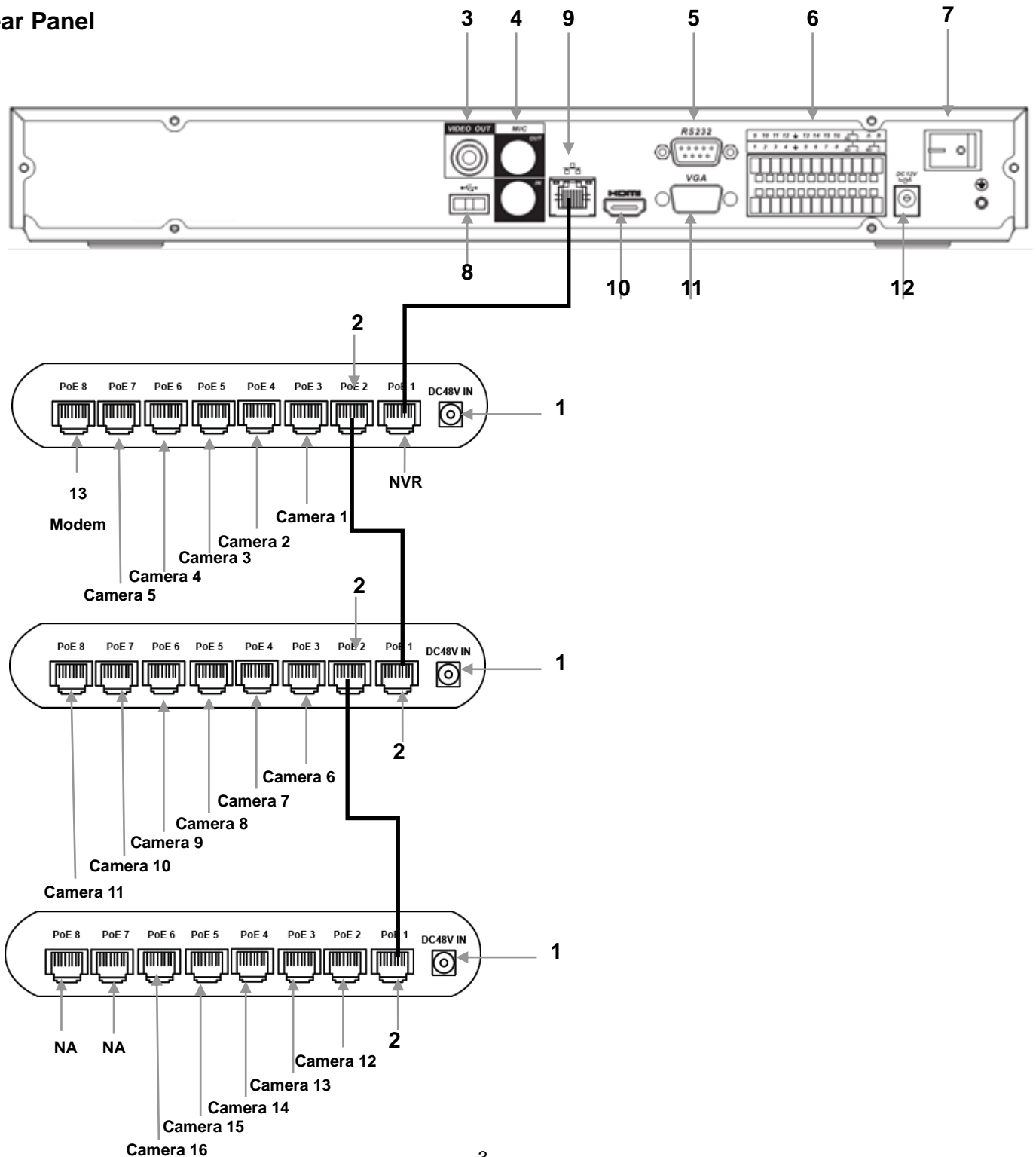
	<p>8 x Day/Night Weatherproof Bullet Cameras with Infrared LEDs - 20m Range</p> <ul style="list-style-type: none"> • IR LEDs for Viewing in Total Darkness up to 20m (B&W Mode) • 720p Resolution, 1.3 Megapixels • Ideal for use Indoors and Out • Power and video over one cable
	<p>8 x Day/Night Weatherproof Dome Cameras with Infrared LEDs - 20m Range</p> <ul style="list-style-type: none"> • IR LEDs for Viewing in Total Darkness up to 20m (B&W Mode) • 720p Resolution, 1.3 Megapixels • Ideal for use Indoors and Out • Power and video over one cable
	<p>18 x Ethernet Cables</p> <ul style="list-style-type: none"> • Pre-terminated - Allowing Simple Plug-in Connection – No Tools Required • 2 x 1.5m, 8 x 10m, 4x 20m, 4 x 30m Leads Supplied <p>1 x HDMI Connection Cable</p> <ul style="list-style-type: none"> • Connect the NVR to a HDMI ready TV or Monitor
	<p>3 x POE Network switch</p> <ul style="list-style-type: none"> • Will Power all connected camera via POE (Power Over Ethernet) • Connect all cameras to these switches along with your NVR and ADSL Modem.

Installation

Before installing this unit, please read through the following points:

- Do not place cords from the AC adapter where they can be pinched or stepped on.
- Leave at least 50mm of space between the NVR and other objects to allow air circulation.
- Do not expose the NVR or Cameras to excessive heat, cold, or moisture.
- Never immerse any component in water, and do not spray cleaners or solvents on the unit. Unplug units before cleaning. When cleaning, use a damp, lint-free cloth only.
- Do not place heavy objects on cords, or cover cords with rugs or carpet.
- Service should be handled only by qualified technicians.

Rear Panel

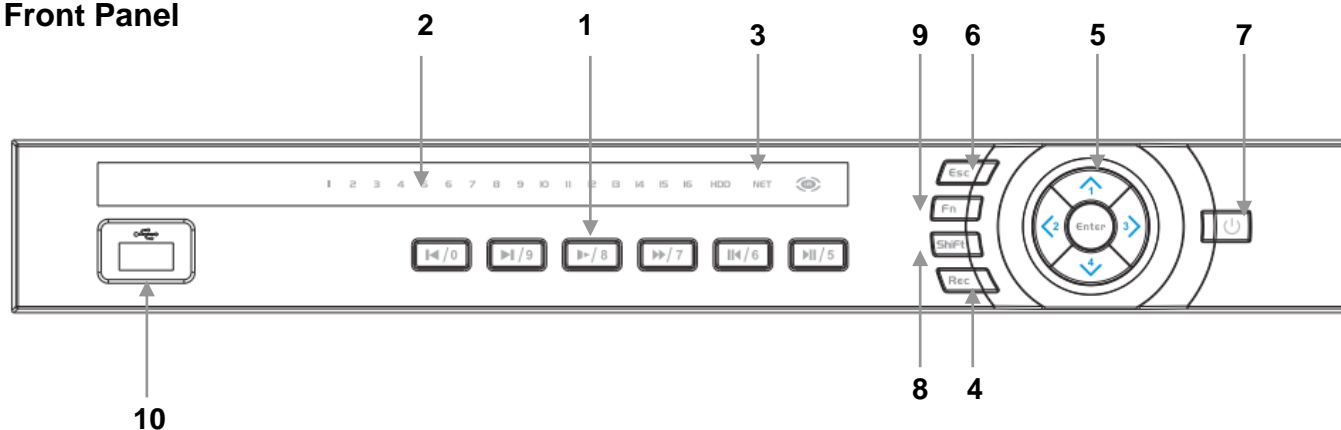


1	“DC48V”	Connect to 48V power supply.
2	“POE SWITCHES”	Powered Ethernet ports to connect to supplied cameras.
3	“VIDEO OUT”	BNC Analogue Video Out connection.
4	“MIC”	BNC Analogue Audio In/Out connection.
5	“RS323”	RS323 connector for optional terminal configuration.
6	“ALARM INPUT”	Alarm input panel, see User Manual or Included CD for more information.
7	“POWER”	Switch on/off to supply power to the device.
8	“USB PORT”	Connect USB Mouse.
9	“LAN PORT”	Connect to Network/Internet for remote monitoring.
10	“HDMI”	Connect to Digital Monitor with supplied HDMI cable.
11	“VGA”	Connect to monitor using VGA cable. (Not Supplied)
12	“DC12V”	Connect to 12V power supply.
13	“Modem Port”	Connect to Network / ADSL Modem for remote monitoring.

Connection Guide

1. Mount the 16 Cameras as required and connect them to the one of the POE Network Switches using the supplied Network Cables.
2. Connect one of the POE Network Switches to the LAN port of the NVR.
3. Connect the **48V Power Supply** labeled **POE** to each POE Network Switches.
4. Connect the **12V Power Supply** labeled **NVR** to the NVR.
5. Plug all power adaptors into a Power-point.
6. Switch NVR on from back of device. IF necessary hold Power button for 3 seconds to turn on.
7. The power LED at the front of the NVR should now be illuminated and the unit will make a loud beep sound to indicate it is powered.
8. Connect the included mouse to the USB port on the front or back.
9. Connecting your local network or modem to one of the POE Network Switches (we recommend doing this last step after all the cameras have been configured).





Front Panel

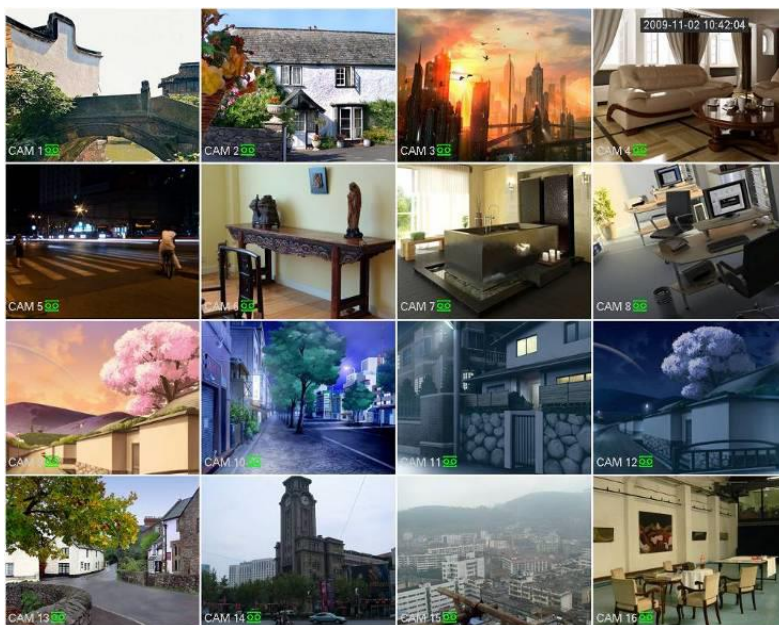


1,5	“NUMERALS”	Buttons marked with numbers can be used to enter numeric data when in numeric text entry mode (See “SHIFT”)
1	“PLAYBACK”	Playback controls used when viewing recorded footage.
2	“CAMERA LIGHTS”	Displays recording cameras. (Unit limited to four maximum)
3	“STATUS LIGHTS”	Shows device is powered/reading HDD/connected to network.
4	“REC”	Manually start/stop recording.
5	“DIRECTION CONTROLS”	Used to select and enter options in menus.
6	“ESC”	Go to previous menu/cancel current operation.
7	“POWER”	Hold for three seconds to power on/off device.
8	“SHIFT”	Switch between text entry modes. (Numerals, English, Capitals, etc.)
9	“FN”	Various auxiliary functions.
10	“USB PORT”	Connect USB storage device or USB Mouse.

Main Screen

Once booted, you will be presented with the screen below (camera may only be black if not yet set up). Each camera view will have one or more symbols from below:

1		Currently Recording	3		Video Loss
2		Motion Detected	4		Camera Lock



System Menu

- Right Clicking anywhere on the screen will bring up the System Login screen.
- Once Logged In, right clicking again will bring up a menu.
- Selecting “MAIN MENU” will show the system menu.
- Right click or press the ESC button to return to previous menus, click on the icon to enter menus.

Channel View Menu

Moving the mouse to the top of each channel in the live view screen will show a menu.

From left to right:

- Playback: Show, in live view, the past few minutes of footage.
- Search tag: Turn on search tag.
- Save: Save the currently displayed file to USB device.
- Camera Source: Change the IP Device for this feed.
- Close: Close the channel view menu.

Default:

The default username is **admin**, the password is also **admin**.

On the NVR physically, you may also use username of **888888**, and the password **888888**.

(Users can alter the password later. Please refer to the Advanced set up guide CD)

Set the Time and Date

When using your NVR for the first time, you will have to set the SYSTEM TIME.

- Right clicking anywhere on the screen will bring up the password menu.
Use the mouse to enter the NVR admin password with the on-screen keypad.
- Then Right click to open the menu and select "MAIN MENU".
- Select "SETTING"
- Select "GENERAL"
- Set System Time, Date Format and DST (Daylight Saving Time) for your region.
- **Click Save before clicking OK**

Important:

If you change the date or time on your NVR after the recording function is activated, the recorded data may be deleted. After setting the date and time, it's recommended to clear all HDD data, and start recording again.

GENERAL

System Time 2012 - 09 - 17 12 : 27 : 47 Save

Basic Settings

Date Format YYYY MM DD DST Set

Date Separator - Time Format 24-HOUR

Device Settings

Language ENGLISH HDD Full Overwrite

Video Standard PAL Pack Duration 60 min.

Device No. 8 Realtime Play 5 min.

Device ID NVR

Other Settings

☐ Startup Wizard Auto Logout 10 min.

☐ Navigation IPC Time Sync 24 Hours

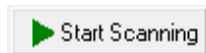
Default OK Cancel

Using a PC to find available IP Addresses

Before setting up your NVR you will first need to find it an IP address, along with all your IP Cameras. This process is to help you find what IP Addresses are currently in use on your computer network, and in turn which ones are still available. If you are not connecting the NVR to a computer network (or internet connection) then any default IP address range may be used. e.g. 192.168.0.100 to 192.168.0.130. We recommend 192.168.0.100

Before starting you must first have a copy of the “Free IP Scanner” Tool which can be downloaded here: http://downloads.rhinoco.com.au/dvr/Free_IP_Scanner.zip

1. Open the Free IP Scanner Tool (if it asks for registration just press skip as it is free to use).



2. Begin the scan by clicking on

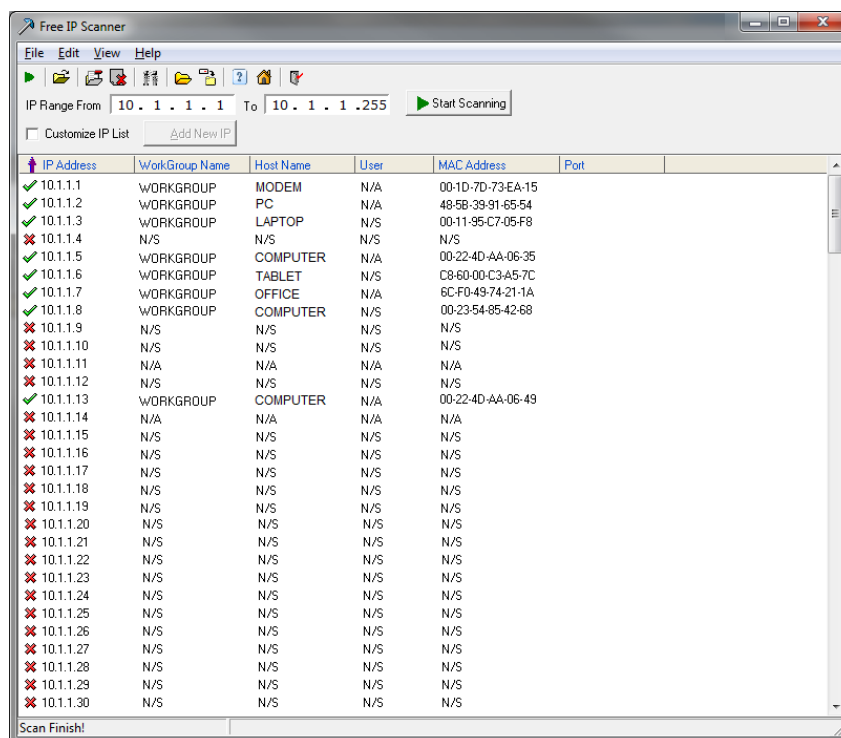
3. The “Free IP Scanner” will automatically detect all IP Addresses on your Computer network and display which ones are in use by listing with a Green tick beside them.

✓ 10.1.1.2	WORKGROUP	PC	N/A	48-5B-39-91-65-54
------------	-----------	----	-----	-------------------

Those which have a red cross beside them are not currently in use and may be available.

✗ 10.1.1.100	N/S	N/S	N/S	N/S
--------------	-----	-----	-----	-----

Note: Even though lower numbered address may be free (such as “?.?.?.8”) we recommend using higher number which are unlikely to be used in the immediate future such as “?.?.?.100” onwards.



4. If you wish to Export the list, you can do this by going to FILE and choosing EXPORT. It can then be saved as text file and even emailed.

Set Up the NVRs Networking

Right click to open the menu and select MAIN MENU, then select SETTINGS followed by NETWORK.

The device comes pre-configured to DHCP (which means it will automatically receive an IP Address). If you wish to manually give it an IP Address, un-tick DHCP and then enter the IP Address, Subnet mask, and Gateway.

In this example we have used 192.168.0.100


NETWORK

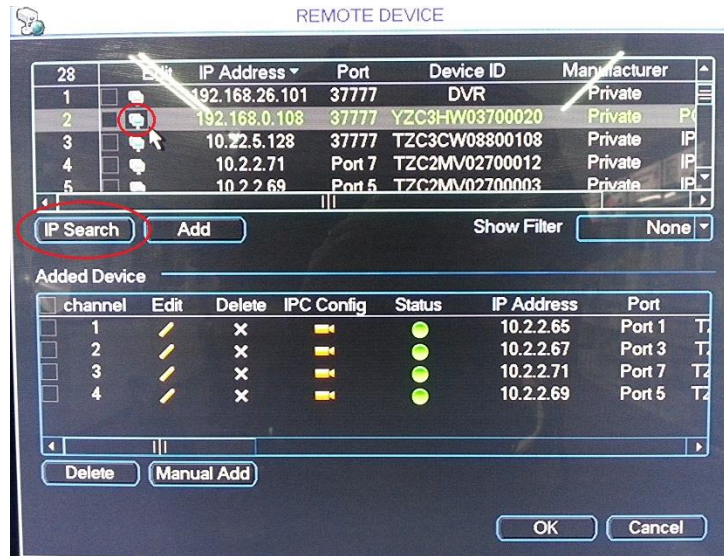
IP Version	IPv4	
IP Address	192 . 168 . 0 . 100	<input type="checkbox"/> DHCP
Subnet Mask	255 . 255 . 255 . 0	
Gateway	192 . 168 . 0 . 1	
TCP Port	37777	HTTP Port 80
UDP Port	37778	RTSP Port 554
Max Connection	20	MTU 1500
Preferred DNS	8 . 8 . 8 . 8	
Alternate DNS	8 . 8 . 4 . 4	
<input type="checkbox"/> LAN Download		


NETWORK SETTING

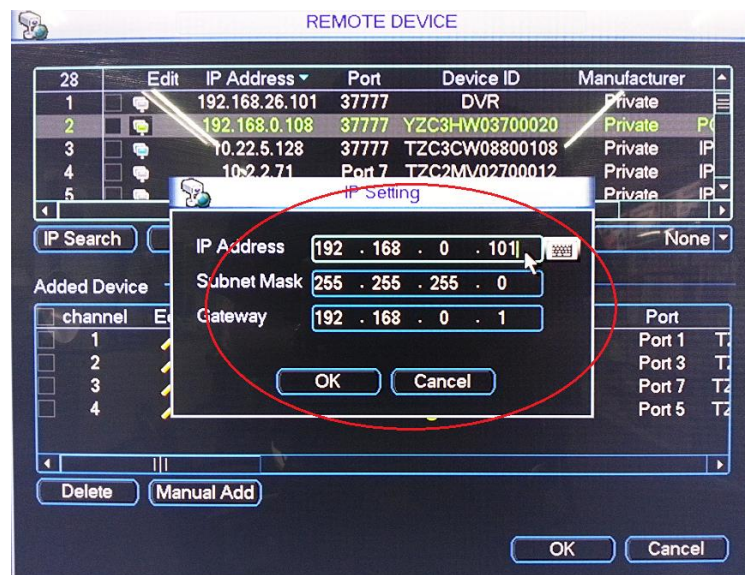
Default Save Cancel

Using the NVR to set the IP Address of an IP Camera

1. Right click to open the menu and select MAIN MENU, then select REMOTE DEVICE
2. Click IP SEARCH  to begin scanning for all the attached IP Cameras.

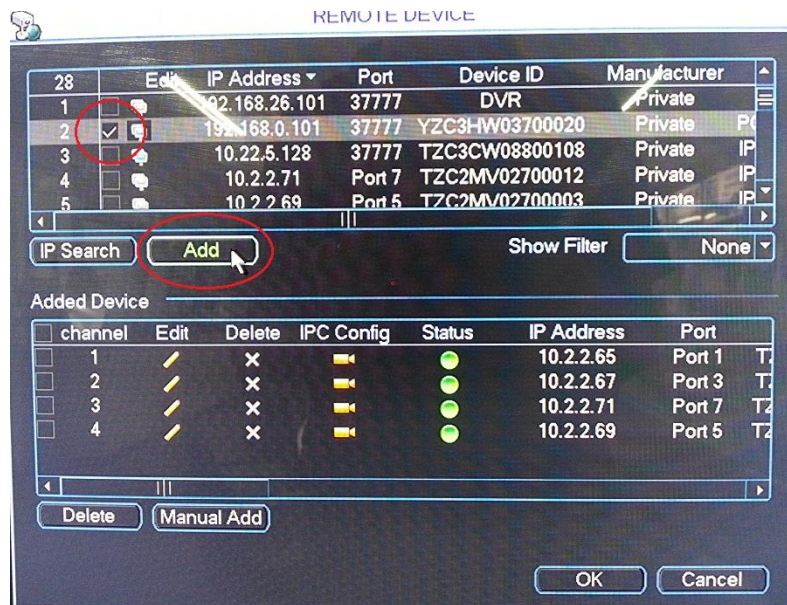


3. The NVR will find your new IP cameras (normally with a default IP Address of 192.168.0.108). You can then click on the IP Cameras Edit button  to change its IP Address.

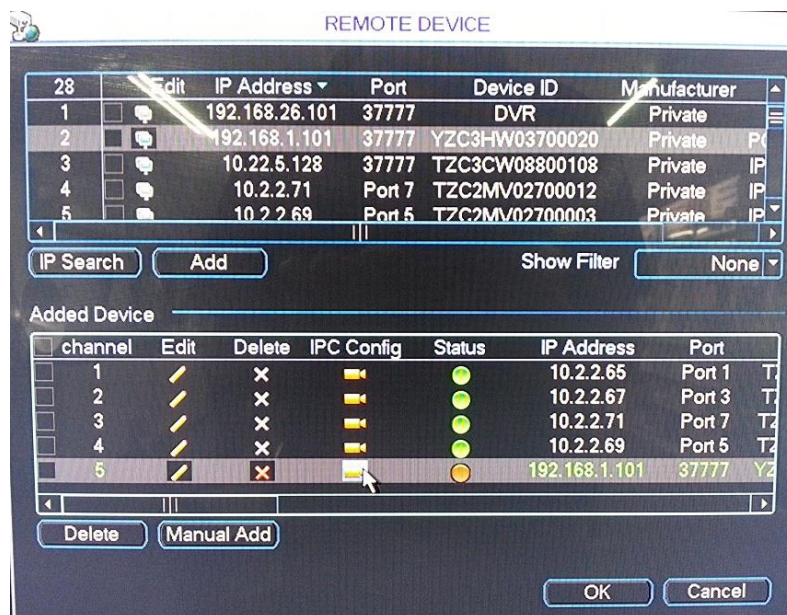


4. Change the IP Cameras IP Address, Subnet mask, and Gateway to the new IP address range. Then click Ok to save. The camera IP Address must be in the same range as your NVR. *In this example we have used 192.168.0.101*

- The IP Camera should now be listed with its new IP Address. You can then tick the new camera you wish to connect and click 'Add' to have it connect to the NVR.



- The IP Camera will now be shown in the bottom list meaning it has been successfully added to the NVR.



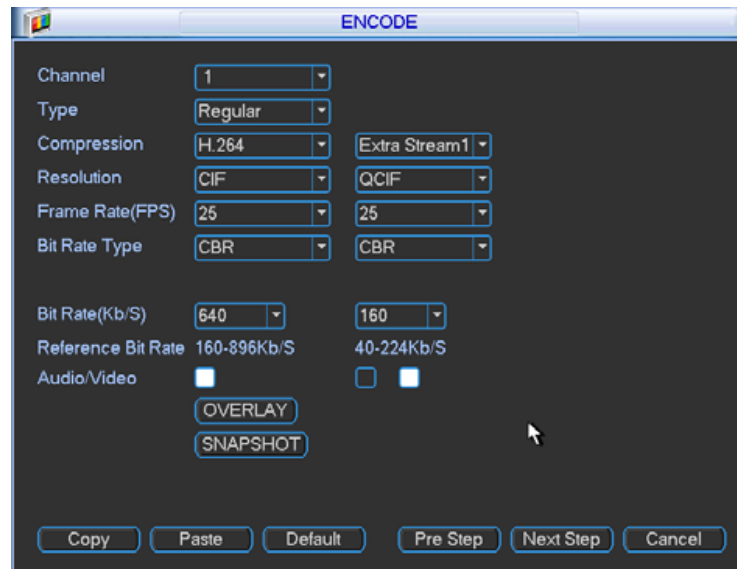
- This process can now be repeated for any additional cameras.

To Set Up Recording Rates

Record Times:

The NVR8PROPACK2NP system is capable of storing up to 1 week of recorded footage based on 2Tb of storage and the 16 included 1.3MP Cameras set to 720P @ 10fps and CBR @ 1536kb/s

Right click to open the menu and select MAIN MENU, then select SETTINGS followed by ENCODE.



Here you may can set set individual encoding options for **Regular**, **Motion Detect** and **Alarm** Recording. While any of the cameras may be set higher, please be aware that it will reduce the total recording time to less than 2 weeks. We recommend:

1MP cameras: Set to **H.264** with a **1280x720** resolution, **10fps**, Bit Rate **CBR of 1536kbps**.

2MP cameras: Set to **H.264** with a **1920x1080** resolution, **10fps**, Bit Rate **CBR of 2048kbps**.

3MP cameras: Set to **H.264** with a **2048x1536** resolution, **10fps**, Bit Rate **CBR of 4096kbps**.

Important: The EXTRA STREAM MUST be enabled if you wish to remote access the NVR system.

All cameras: Set to **H.264** with a **CIF** resolution, **10fps**, Bit Rate **CBR of 320kbps**.

To Begin Recording

Once you have successfully set up the cameras, exit the Menu by right clicking or pressing the CLOSE button. By default, the NVR will begin recording when it is properly connected to the cameras and has an

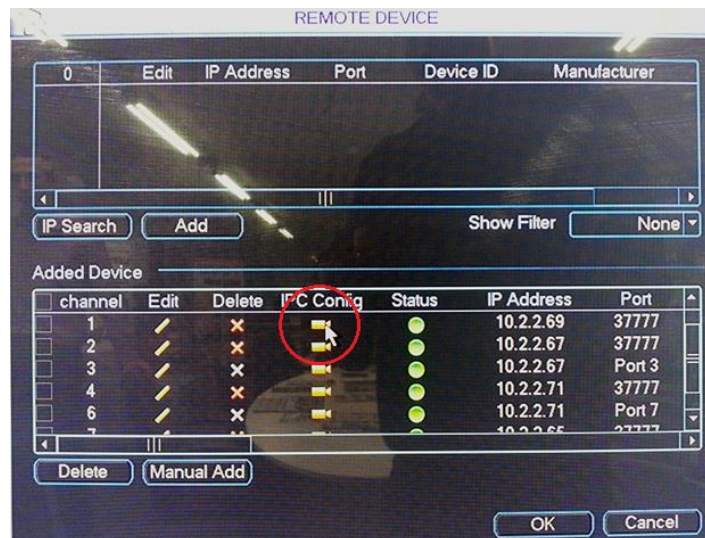
installed HDD. If it is recording, the recording icon " " will be displayed on screen.

Automatic Overwriting:

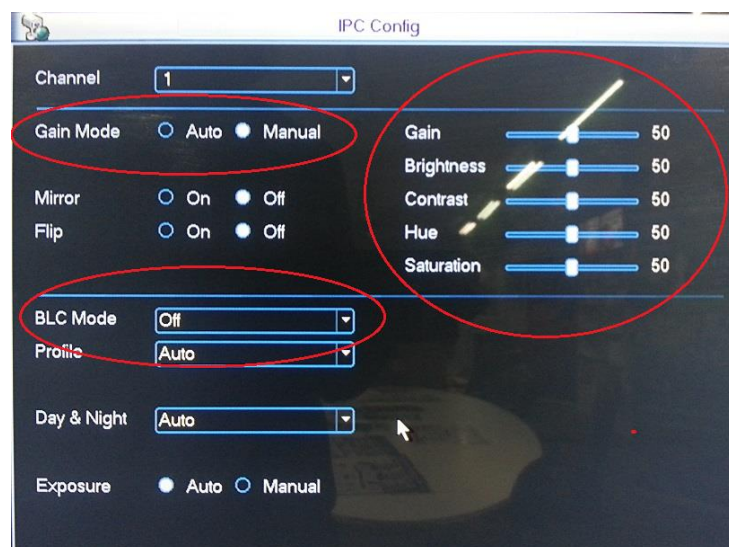
*When the system is in full, the oldest recorded data will be overwritten automatically. **This NVR System is set to Overwrite by factory default** but can be changed in the "**GENERAL**" Menu.*

To Set Camera Colour Settings

1. Right click to open the menu and select MAIN MENU, then select REMOTE DEVICE



2. Click IPC CONFIG to open the IP Cameras settings.



3. Here you can adjust the IP Cameras Colour, Gain, BLC, WDR and Day/Night.

Please ensure that Day/Night is always set to Auto. Failing to do so could mean the Cameras are unable to see at night, or become stuck in black/white during the day.

Motion Detection

Should you wish to use Motion detect recording, it can be set per camera, per time period and to detect in certain portions of the screen.

- Right click to open the menu and select “MAIN MENU”.
- Select “SETTING”
- Select “DETECT”
- Select ‘Motion Detect’ from Event Type
- Select channel from Channel drop down
- Check the Enable box
- **Ensure Record Channel is checked, and a Region has been selected.**
- Click **Save**.

More Settings:

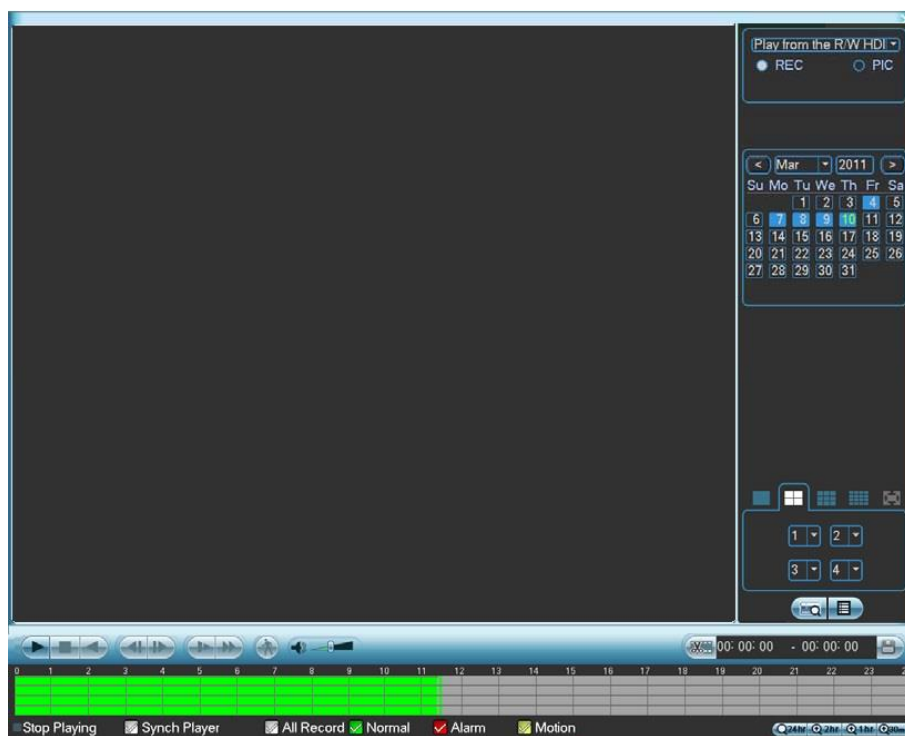
Latch	Time to wait after motion is detected, before checking for motion again.
Region Select	Select region of feed within which motion detection will occur. Click and drag with the mouse to arm/disarm areas of the feed. Motion detected in red areas will cause recording, motion will not be detected in grey areas. Press “ ENTER ” to save.
Sensitivity	Select from 1 to 6 the sensitivity of the recording, 6 being the most sensitive to movement.

- Right click to open the menu and select “MAIN MENU”.
- Select “SETTING”
- Select “SCHEDULE”
- Select a channel.
- Choose a period and set the time options to the period you wish to motion record, bearing in mind system uses **24 hour time**.
- Check **MD** for this period.
- Click **OK** to save.

Period	Record Type	Regular	MD	Alarm	MD&Alarm
Period 1	00 :00 -24 :00	<input checked="" type="checkbox"/>	<input type="checkbox"/>	<input type="checkbox"/>	<input type="checkbox"/>
Period 2	00 :00 -24 :00	<input type="checkbox"/>	<input type="checkbox"/>	<input type="checkbox"/>	<input type="checkbox"/>
Period 3	00 :00 -24 :00	<input type="checkbox"/>	<input type="checkbox"/>	<input type="checkbox"/>	<input type="checkbox"/>
Period 4	01 :00 -24 :00	<input type="checkbox"/>	<input type="checkbox"/>	<input type="checkbox"/>	<input type="checkbox"/>
Period 5	00 :00 -24 :00	<input type="checkbox"/>	<input type="checkbox"/>	<input type="checkbox"/>	<input type="checkbox"/>
Period 6	00 :00 -24 :00	<input type="checkbox"/>	<input type="checkbox"/>	<input type="checkbox"/>	<input type="checkbox"/>

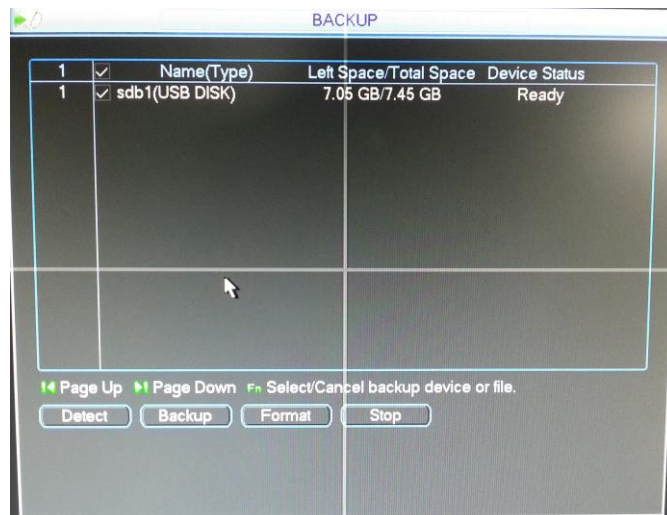
How to Playback Video Footage on your NVR

1. Right click anywhere on the screen to bring up the menu and log on. Use the mouse to enter the NVRs admin password "888888" with the on-screen keypad.
2. Once logged in you can left click to open the menu and select SEARCH.
3. You will now see the NVR search screen. On the right hand side there is a calendar in which you can select the month and day you wish to playback. Any date that is highlighted blue has video available to playback.
4. Once you have selected the day, you can choose which cameras you wish to playback, and the mode in which they will be displayed (1ch, 4ch, 8ch, 16ch at a time).
5. Finally you can select the time from the time bar at the bottom of the screen. You will notice that the hours are listed from 00:00 to 24:00. Simply clicking on the bar will display the video footage from that time. A green bar will indicate that there is video available at that time.

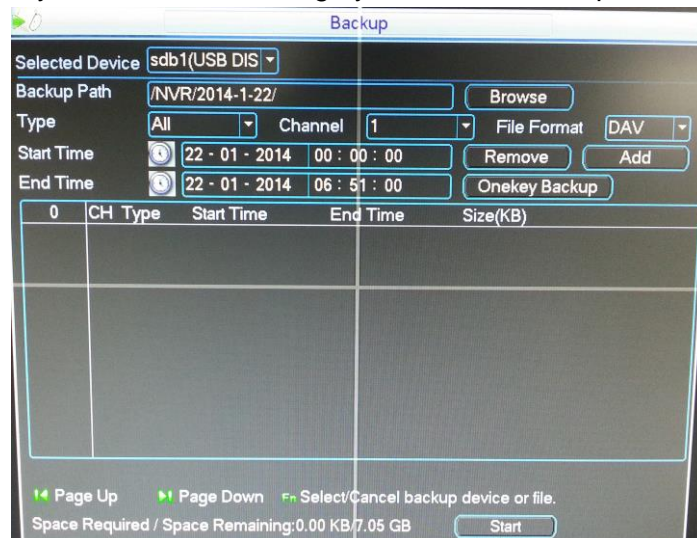


How to Backup Video Footage on your NVR

1. Right click anywhere on the screen to bring up the menu and log on. Use the mouse to enter the NVRs admin password "888888" with the on-screen keypad.
2. Once logged in, you can now left click to open the menu, select MAIN MENU then BACKUP.
3. You will now see the NVR Backup Devices where you can choose the device you wish to backup to. Choose your device and click BACKUP to continue.



4. You will see the NVR Backup screen where you can choose the Camera Channel, followed by the Start and End times for the section of video you wish to backup. Click ADD to save your selection, and repeat process for any addition video footage you wish to back up.



5. Once you have selected all the video to be backed up, press Start to begin the transfer process.

In order to backup Video Footage from your NVR you will first require a USB Stick or USB Hard Drive (we strongly recommend having a FAT32 file system).

Simple Configuration of your NVR for Remote Access, using QR codes

To be able to set your NVR up for Remote Access, you will first require:

- ☐ An ADSL internet connection of 512/512 minimum (ADSL2 or NBN recommended).
- ☐ A network cable between your NVR and your Modem.
- ☐ An iPhone with the iDMSS App or an Android smartphone with the gDMSS App.

Once you have these you can proceed to set up the Remote Access by:

1. Connect your NVR to your Modem by a network cable.
2. Under Main Menu > Settings > Network.
Enable DHCP or enter your local network address information.
3. Exit to save.
4. Now go to Main Menu > Settings > Network > Network Settings.
Tick the box for P2P.
Then double Click P2P to open up the sub menu.



5. Ensure "Enable" is ticked. Then Click Save to exit.
6. You can now set up the DMSS Mobile App by QR Code.

DMSS Mobile App by QR Code

App available for Android, iOS, Blackberry, Symbian, Windows Mobile and Windows 7 mobile

From your compatible Smartphone, access the App Marketplace and download the free App. This may also be listed as:

iDMSS lite for Apple iOS
gDMSS lite for Android
DMSS lite for others

iDMSS plus for Apple iOS
gDMSS plus for Android

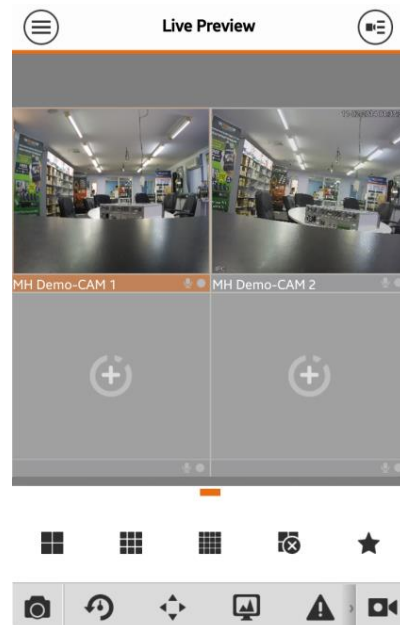


Configuration:

1. On your NVR go to **Main Menu > Settings > Network > Network Settings**.
Tick the box for P2P. Then double Click P2P to open up the sub menu.
2. On your Smartphone go to “**MENU**” ☰ then “**Device manager**” and select “**ADD**” ⊕.
3. Set “**Register Mode**” to “**P2P**”
4. You can now click “**Scan QR Code**” and use your phone to scan the code on your NVR.



5. Enter in your devices **NAME**.
6. Enter your **Username / Password** and the set Live Preview and Playback to “**Extra**”.
7. You can now select “**Start Live Preview**” to save and test the connection to the NVR.
8. In the future, you can connect to your system directly from the main screen by tapping the “**DEVICE LIST**” ☰ then ticking your NVR and selecting the “**Start Live Preview**” to connect.

A screenshot of the NVR configuration screen. At the top, there is a back arrow, the text 'NVR', and a menu icon. Below this is a 'Scan QR Code' button with a QR code icon. The main area contains a form with the following fields: 'Register Mode' (set to 'IP/Domain'), 'Name' (set to 'NVR'), 'Address' (set to '10.1.100.48'), 'Port' (set to '37777'), 'Username' (set to 'admin'), 'Password' (masked with dots), 'Live Preview' (set to 'Extra'), and 'Playback' (set to 'Main'). At the bottom is a 'Start Live Preview' button.

Advanced Configuration of your NVR for Remote Access by IP Address (optional)

Important: Before Setting up remote access for your NVR, you will need a good understanding of computer networks. If you do not, please seek the assistance of a qualified I.T. professional.

To be able to set your NVR up for Remote Access, you will first require:

- ☐ An ADSL internet connection of 512/512 minimum (ADSL2 or NBN recommended).
- ☐ An ADSL Modem which supports Port Forwarding (such as Sapido, D-link or Netgear).
- ☐ An “External static IP address” from your Internet Service Provider.
- ☐ An “Internal Static IP address” from your Modem.
- ☐ A network cable between your NVR and your Modem.
- ☐ A windows PC on your network to configure your modem.

Once you have these you can proceed to set up the Remote Access by:

1. Give your NVR the internal IP Address.
2. On the NVR change port 80 to port 88.
3. Ping the NVR from a local computer to ensure it is reachable on your network.
4. Port forward ports **88, 37777, 37778, 554** in the modem, to the “Internal IP address” of the NVR.
5. You should then be able to test the connection to the NVR over the internet from a different internet connection (or mobile on 3G).

Test your Remote Access by connecting to the NVR:

When you are in the same building as the NVR you will be able to connect via WIFI and use the “Internal IP address” of the NVR. However when you are not where the NVR is and wish to connect via the internet or 3G, you would use the “External static IP address” given to you by your Internet Service Provider.

Port forwarding support:

There are many different brands and models of ADSL Modems which makes them difficult to set up, this is why we must recommend an IT professional. Some manufacturers offer guides on their websites or alternatively we can recommend Third-party assistance on configuring port forwarding from sites such as: www.portforward.com

When using more than one DVR on a site:

Should you have more than one NVR on site it may be necessary to set the second machine to a different set of ports. For example set NVR 1 to port 88 and then DVR 2 to port 89.

Set up DDNS on your NVRPRO (optional)

DDNS is a service that will track your numeric IP address and allow you to attach an alphanumeric address. So for example, instead of using "123.123.123.123" (the Google address) you would use "google.com".

Why use DDNS?

Remembering a numeric IP address can be complicated, where an alphanumeric address is easy to remember. The other main advantage for DDNS is If you have a dynamic ip address, (where your address can change monthly) the DDNS service will track and update with your new IP address automatically. So no matter what your numeric ip address is, your alphanumeric address will work. There are free and paid services available, however a free DDNS service has been built in to these DVRs. This tutorial will go over how to set up your DVR to use the free DDNS service.

How to enable your DDNS?

In order to set up DDNS on your NVRPRO, you will need to enable the DDNS service in the Network settings. MENU > SETTING > NETWORK > NETWORK SETTING > DDNS (double click).

Set DDNS Type to "Private DDNS" and Tick ENABLE

SERVER IP to www.dahuaddns.com

DOMAIN MODE to "Default Domain"

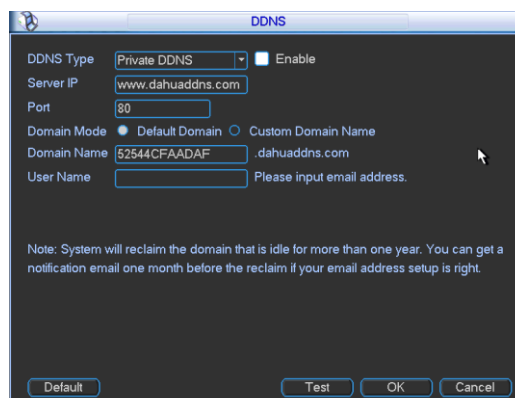
DOMAIN NAME is your unique <MAC address>.dahuaddns.com

Username is left Empty

Now when trying to connect externally you would now use the CURRENT HOST ADDRESS instead of the internal IP address.

e.g. <MAC address>.dahuaddns.com

(Note: This is also dependent on Port forwarding being set up in your ADSL modem. Please use the default unique ID not <MAC address> as it is just an example).



DMSS Mobile App by IP Address (optional)

App available for Android, iOS, Blackberry, Symbian, Windows Mobile and Windows 7 mobile

From your compatible Smartphone, access the App Marketplace and download the free App. This may also be listed as:

iDMSS lite for Apple iOS

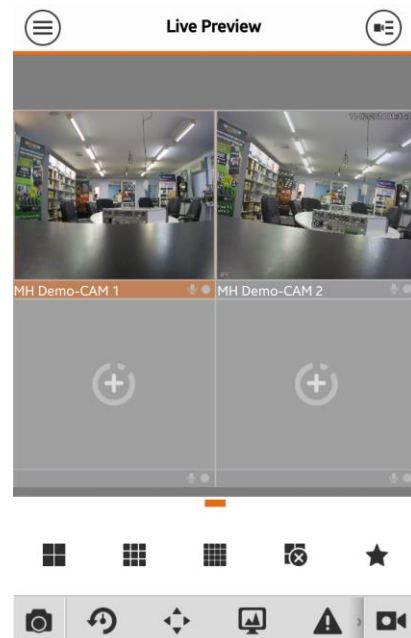
gDMSS lite for Android

DMSS lite for others



Configuration:

1. Go to “**MENU**” ☰ then “**Device manager**” and select “**ADD**” ⊕.
2. Set “**Register Mode**” to “**IP/DOMAIN**”
3. Enter in your devices **NAME**, **IP Address** or DDNS and TCP **Port** (default is 37777).
4. Enter your **Username** / **Password** and the set Live Preview and Playback to “**Extra**”.
5. Select “**SAVE**” ⌘ in the top right corner or “**Start Live Preview**” to save and connect.
6. You be returned to your Live View screen where your camera feed will now be displayed.
7. In the future, you can connect to your system directly from the main screen by tapping the “**DEVICE LIST**” ☰ then ticking your NVR and selecting the “**Start Live Preview**” to connect.

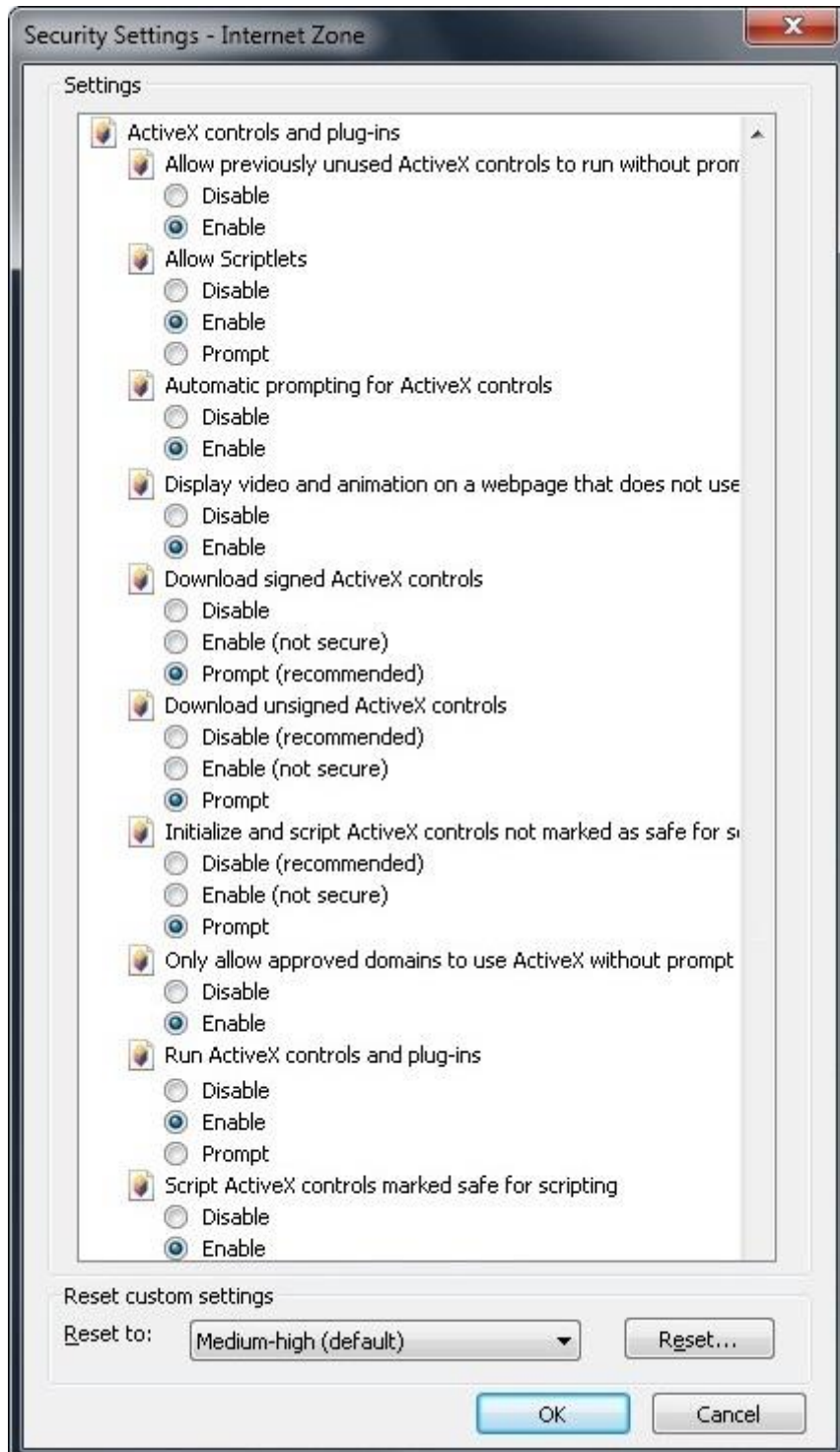
A screenshot of the 'NVR' configuration screen in the DMSS mobile app. The screen has a title bar with a back arrow, 'NVR', and a save icon. Below the title bar is a 'Scan QR Code' button with a QR code icon. The main area contains a form with the following fields: 'Register Mode' (set to 'IP/Domain'), 'Name' (set to 'NVR'), 'Address' (set to '10.1.100.48'), 'Port' (set to '37777'), 'Username' (set to 'admin'), 'Password' (masked with dots), 'Live Preview' (set to 'Extra'), and 'Playback' (set to 'Main'). At the bottom is a 'Start Live Preview' button.

How to enable ActiveX Controls in Internet Explorer (optional)

Important: Before Setting up remote access for your DVR, you will need a good understanding of computer networks. If you do not, please seek the assistance of a qualified I.T. professional.

We can only recommend using ActiveX Internet Explorer 5.5 or above, and strongly recommend the use of IE9 as unfortunately IE10 is not compatible.

To enable ActiveX controls go to: Tools > Internet Options > Security > Custom Level > Then once in the Security Settings, enable all ActiveX related options. Please see the settings below:



Troubleshooting

Please refer to the FAQ table below for easy troubleshooting. The table below describes some typical problems and their solutions. Please consult these guides before contacting your NVR dealer.

PROBLEM	SOLUTION
No power	<ul style="list-style-type: none">- Check power cord connection.- Confirm that there is power from the outlet.- Ensure that the 12V 5A is connected to the NVR
Motion Detection not working	<ul style="list-style-type: none">- Ensure that motion detection is enabled for that channel in the "DETECT" menu.
No live video	<ul style="list-style-type: none">- Check the cameras cable and connections.- Check the monitors cable and connections.- Ensure you are not in playback mode.- Ensure that the 48V power supply is connected to the switch and the 12V 5A is connected to the NVR- Turn the NVR off and power on while holding the SHIFT button.
No video over the network with web browser or mobile	<ul style="list-style-type: none">- Make sure that Extra Stream is enabled for each camera.
No recorded video	<ul style="list-style-type: none">- Check if the HDD is installed and connected properly.
NVR keeps rebooting	<ul style="list-style-type: none">- Ensure that the 12V 5A is connected to the NVR
HDD detection failed	<ul style="list-style-type: none">- Ensure that the 12V 5A is connected to the NVR
Can't detect your USB flash drive	<ul style="list-style-type: none">- Use another USB flash drive to test.- Ensure it is formatted to FAT32.- Check Appendix B of User manual (on CD).
Can't view the NVR images over the network with web browser	<ul style="list-style-type: none">- Ensure you have installed the ActiveX- Check Section 8 of User manual (on CD).

This guide is intended as a Quick Set Up and Basic use manual only, please refer to the user manual on the included CD for all other details.

Limited Warranty

Cornick Pty Ltd (Seller) warrants its products to be in conformance with its own plans and specifications and to be free from defects in materials and workmanship under normal use and service for twelve months from the date of original purchase. Sellers obligation shall be limited to repairing or replacing, at its option, free of charge for materials or labor, any part which is proved not in compliance with Sellers specifications or proves defective in materials or workmanship under normal use and service. Seller shall have no obligation under this Limited Warranty or otherwise if the product is altered or improperly repaired or serviced by anyone other than Seller.

For Warranty Service: Return transportation prepaid with a copy of your purchase receipt and contact details to:

RhinoCo Technology, 9 Hannabus Place, McGraths Hill, NSW 2756 Australia.

Seller has no obligation to attend the buyer's location to retrieve the goods or make repairs onsite.

- There are no warranties, expressed or implied, of merchant ability, or fitness for a particular purpose or otherwise, which extend beyond the description on the face hereof. In no case shall seller be liable to anyone for any consequential or incidental damages for breach of this or any other warranty, express or implied, or upon any other basis of liability whatsoever, even the loss or damage is caused by its own negligence or fault.
- Seller does not represent that the products it sells may not be compromised or circumvented; that the products will prevent any personal injury or property loss by burglary, robbery, fire or otherwise; or that the products will in all cases provide adequate warning or protection. Customer understands that a properly installed and maintained alarm system or video surveillance system may only reduce the risk of a burglary, robbery, or fire without warning, but it is not insurance or a guarantee that such will not occur or that there will be no personal injury or property loss as a result.
- Consequently, seller shall have no liability for any personal injury; property damage or other loss based on a claim the product failed to give any warning. However, if seller is held liable, whether directly or indirectly, for any loss or damage arising under this limited warranty or otherwise, regard less of cause or origin, seller's maximum liability shall not in any case exceed the purchase price of the product, which shall be the complete and exclusive remedy against seller.
- This warranty replaces any previous warranties and is the only warranty made by the Seller on this product. No increase or alteration, written or verbal, of the obligations of this Limited Warranty is authorized.

Please refer to the website (www.vip-vision.com) for a full list of trading terms.





PLEASE CUT OUT & RETURN THIS INFORMATION

WITHIN 14 DAYS OF PURCHASE TO:

RhinoCo Technology
9 Hannabus Place
McGraths Hill NSW 2756 Australia

Model: NVR16PROPACK3 Professional Surveillance Pack Warranty Card

Name

Address

Suburb

State

Postcode

Email

Date of Purchase

Invoice Number

Daytime Phone

Where did you purchase your NVR16PROPACK3?

Store Location

This information will only be used by the manufacturer and will not be sold to any third parties.

Dear Customer,

We appreciate your confidence in our product, and you can be certain that we will do everything possible to ensure that you are happy with your decision and that you have years of satisfaction from your NVR16PROPACK3.

We take extreme care in the research, design and development of our products to ensure they meet your needs. Additionally, we keep in close contact with our dealers Australia wide, and should any problem occur, we will work closely with your local dealer to see that it is resolved quickly.

As a leading designer and manufacturer, we are continually endeavoring to exceed the expectations of our customers. Furthermore, we appreciate your input regarding potential design improvements, issues regarding our service and support, and any other ideas you may have which could help us to serve you better.

Please make any comments you have here: