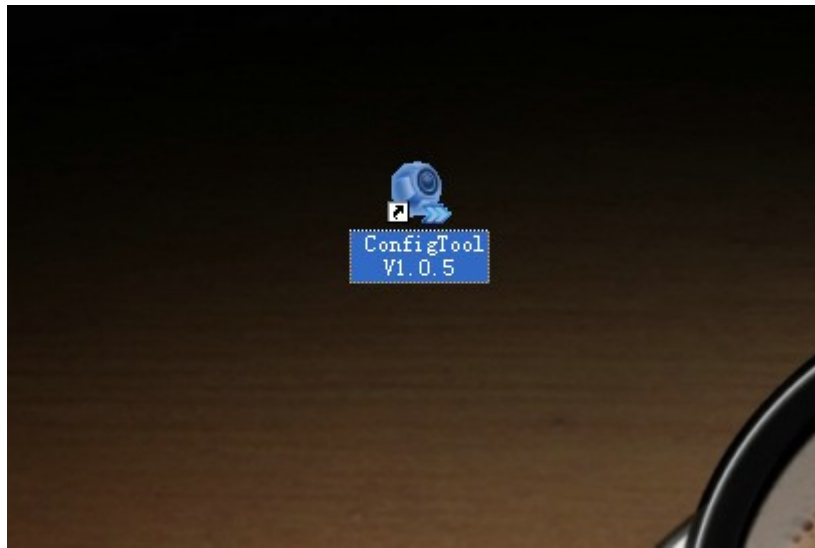
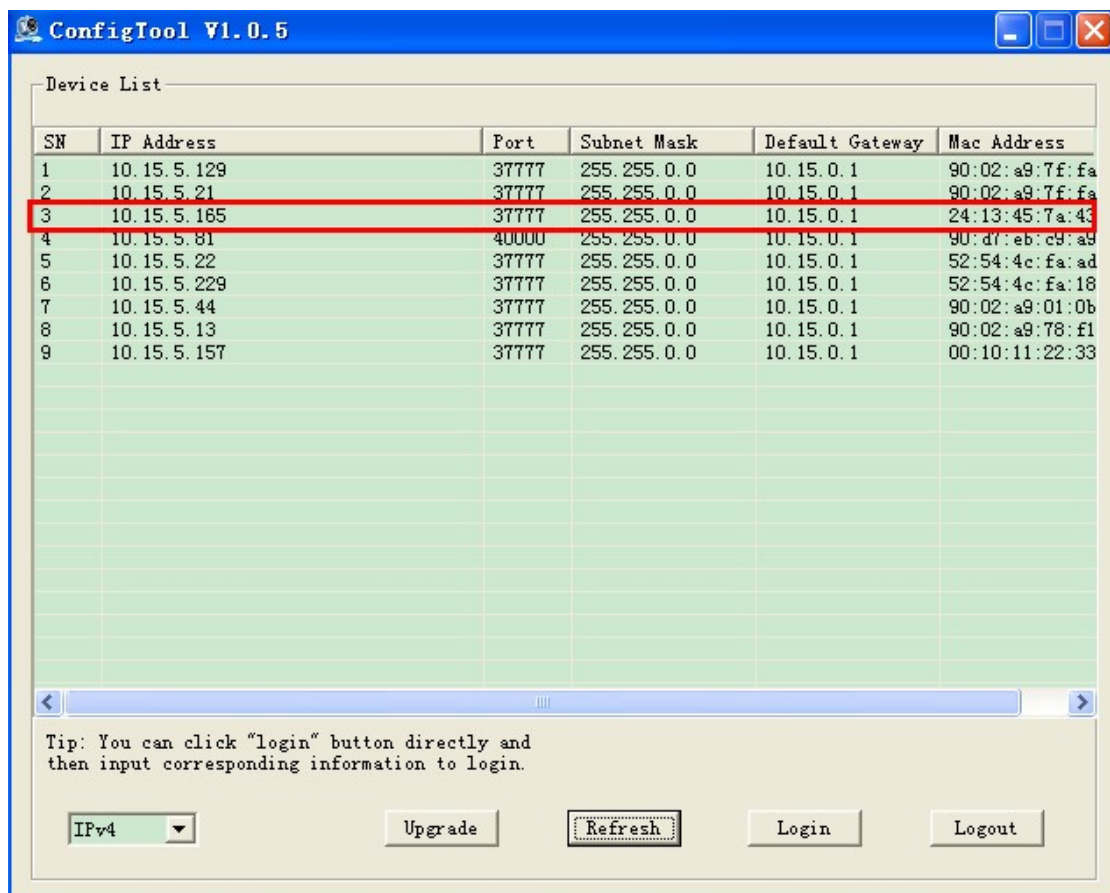


How to upgrade with Config Tool

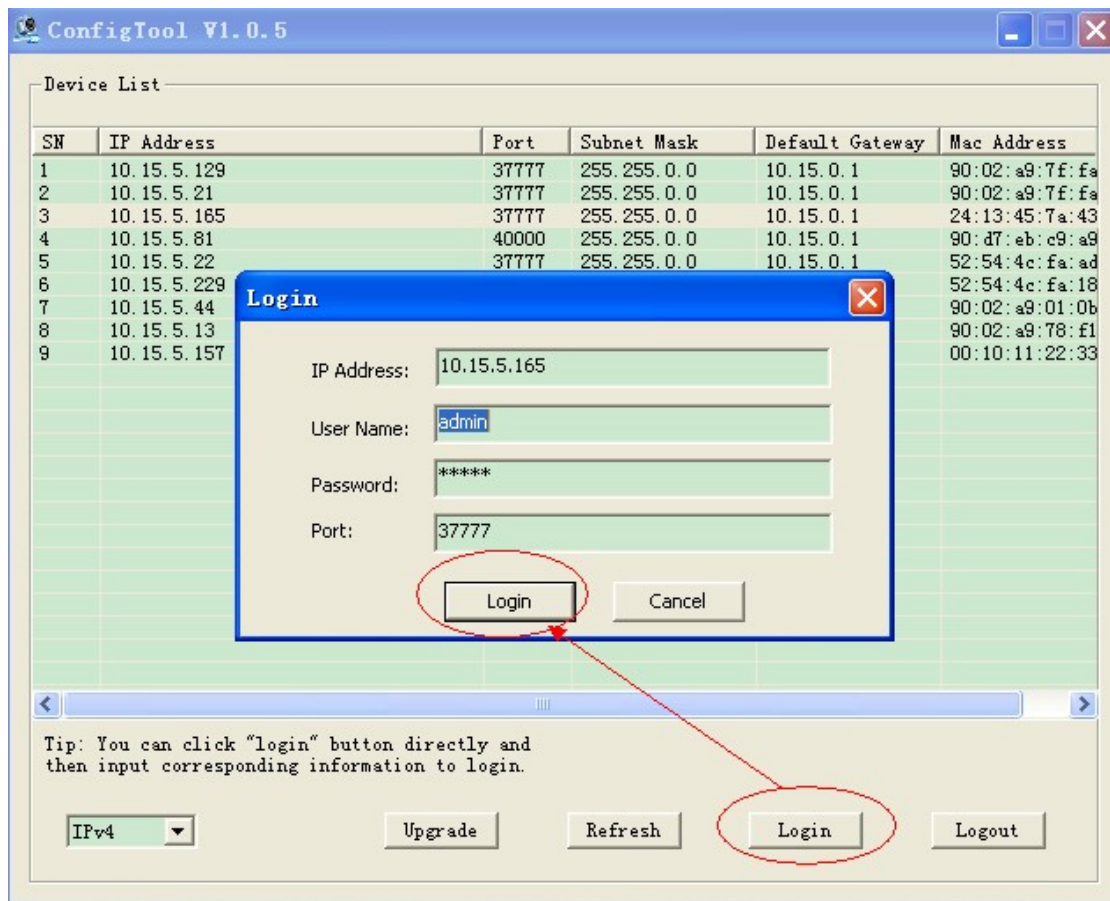
1.Install the ConfigTool, and open it.



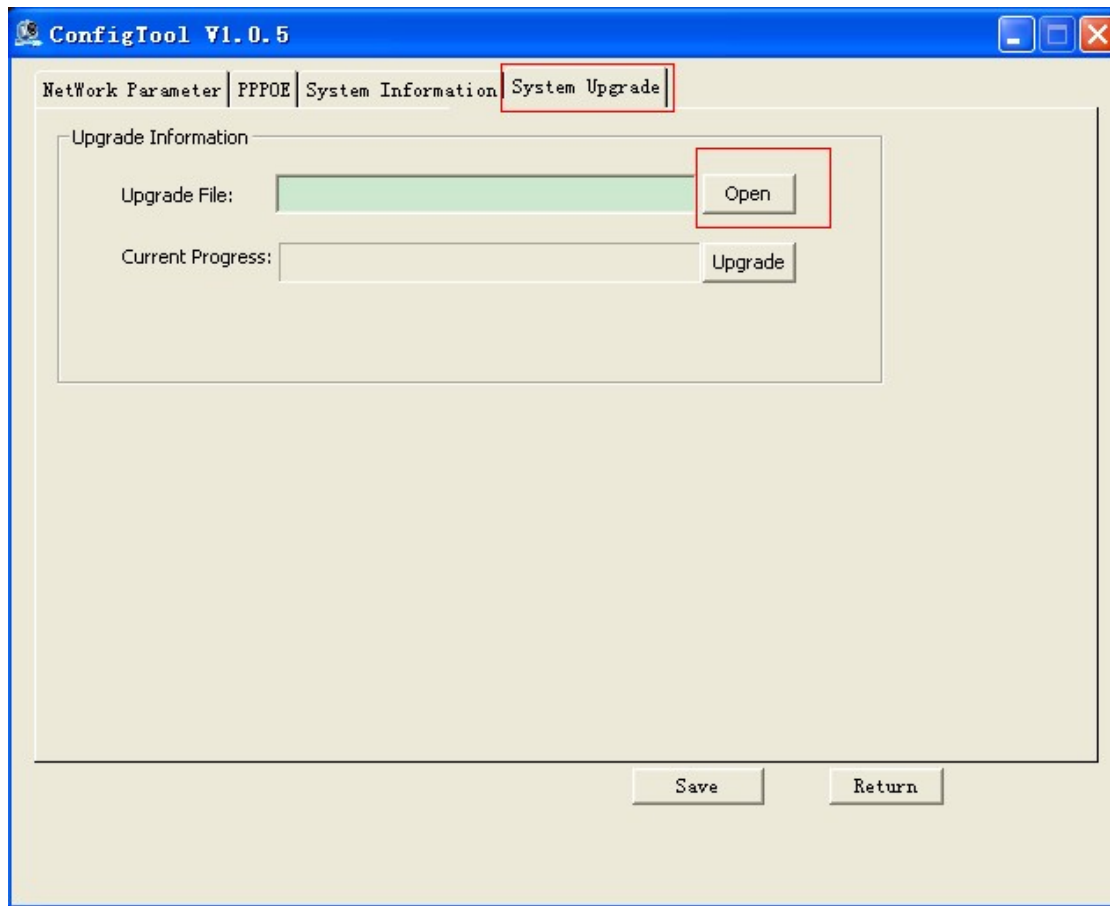
2.If the DVR or the camera all in the same network with this PC, it will display in the Device List.
For example, The device which should be upgrade via network is SN3 in the list.



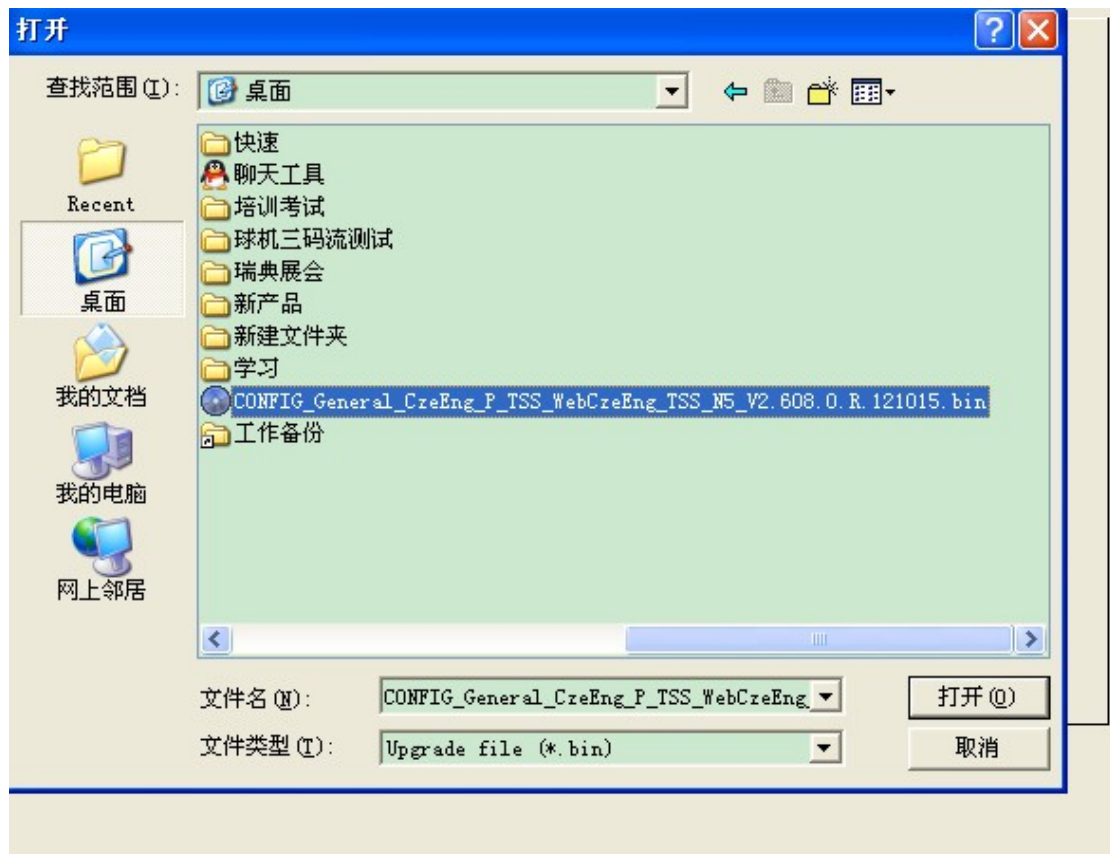
3.Choose the device and double-click or click the login at the lower right corner, you should login the device first.



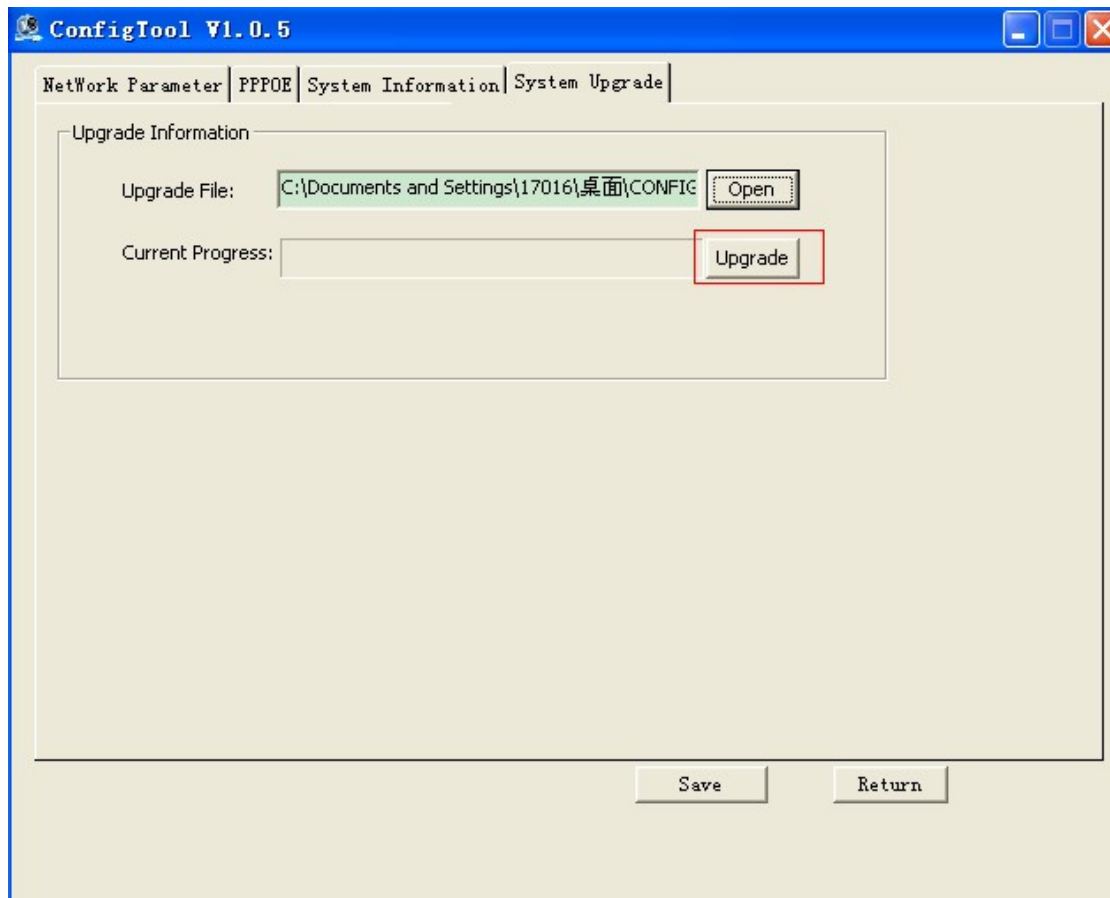
4.Click the System upgrade tab for the upgrade interface.



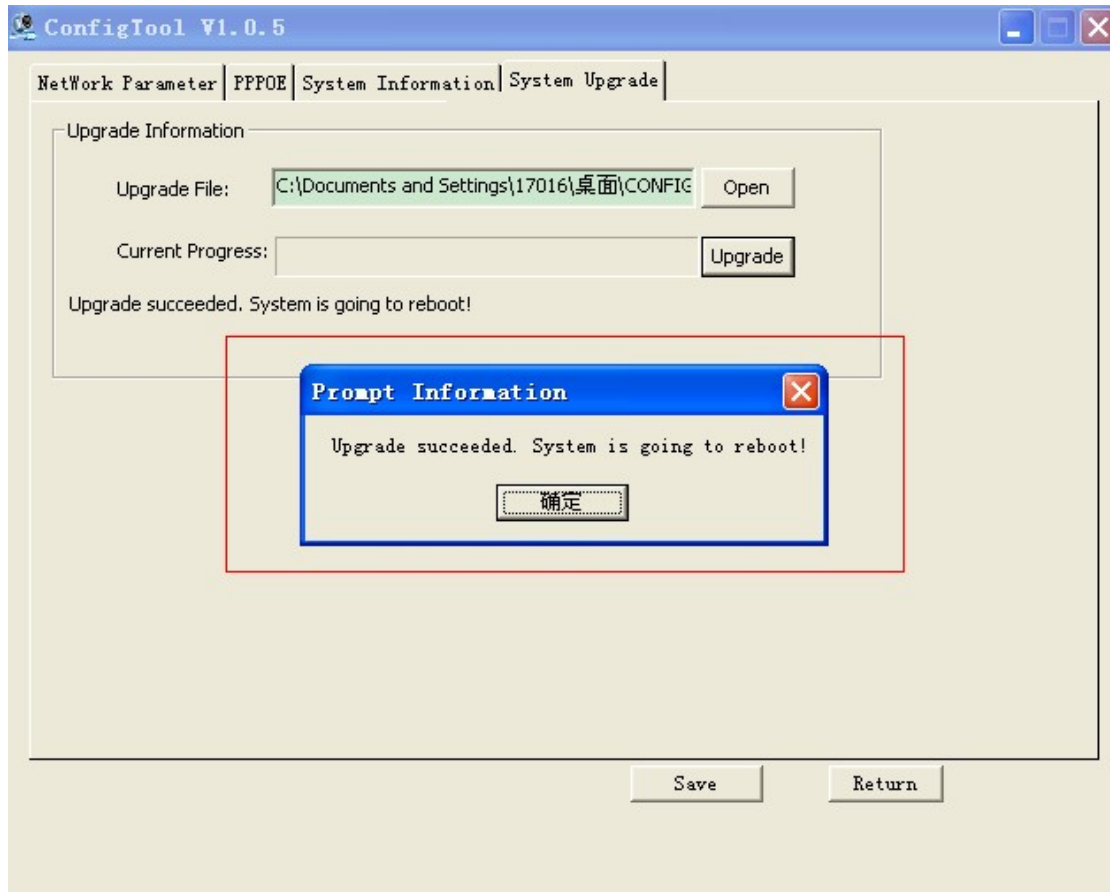
5. Click Open to open the firmware you need to upgrade.



6. Click Upgrade to start the upgrade progress.



7. You can see a pop-up dialogue to show you the upgrade result. Sometimes the firmware have a big size, so the upgrade progress will cost a few minutes. Sometimes the firmware is very small in size, like the config firmware, so the progress will be very quickly. In some situation, there may pop-up some failure information, that is to show you the upgrade is failed, please check if the firmware were suit for the device, or the network problem there.



8. After upgrade, the device will restart soon, please wait for the start, you can see the device display in the list if it has restarted successfully.

